

100
GEORGE ST

MARYLEBONE W1

A DEVELOPMENT BY



GEORGIAN SOPHISTICATION MEETS MODERN MARYLEBONE

An exceptional collection of 41 residences, 100 George Street has been carefully composed by globally renowned developers Native Land in collaboration with Hopkins Architects, for cosmopolitan London living. Georgian inspired architecture blends with exquisite materiality, craft and attention to detail, to create sophisticated homes underpinned by timeless elegance.

OVERVIEW

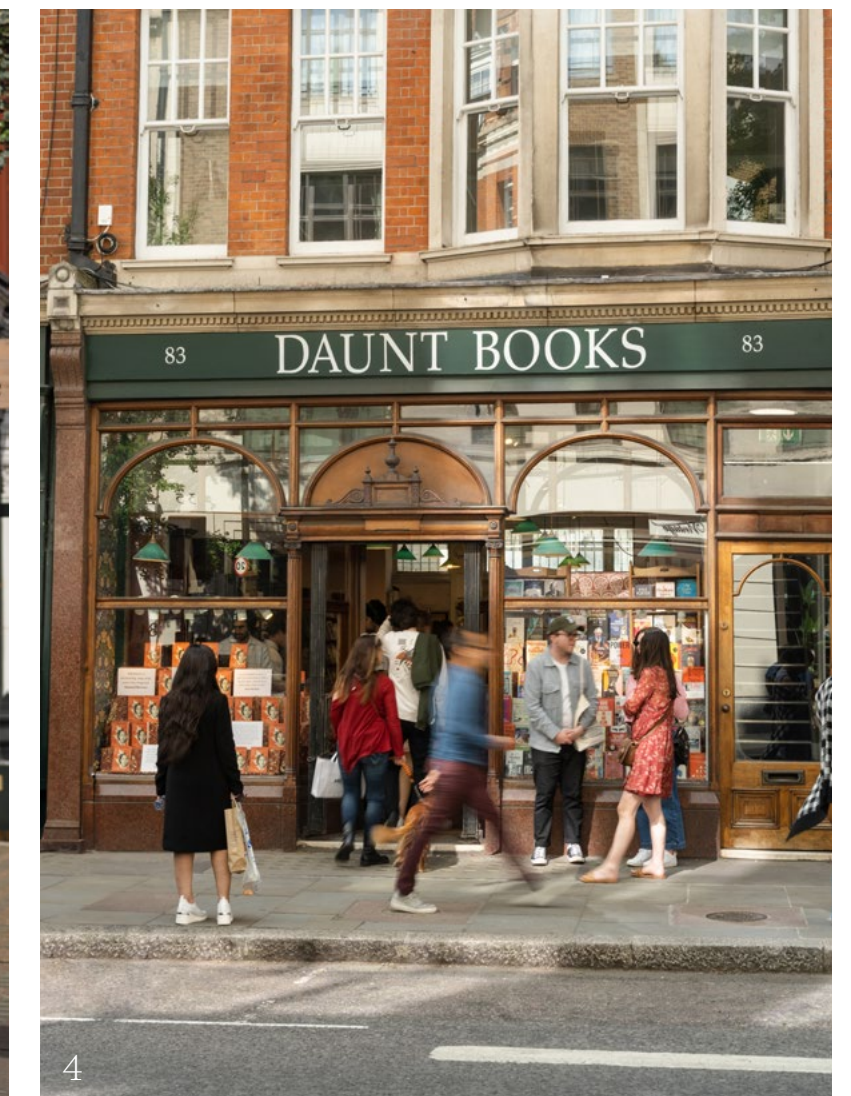
- 41 private apartments in the centre of Marylebone
- Five-star hotel style Concierge & 24 hour Security
- Exclusive amenities including residents lounge, library, and meeting room
- Fully equipped gym and luxury spa with treatment room and sauna
- Secure Underground Car Parking & Storage
- Excellent transport connections across London and beyond
- Designed by Hopkins Architects
- Developed by Native Land in partnership with Derwent London and the Portman Estate



A TRUE URBAN VILLAGE

In the midst of Marylebone, adjacent to Mayfair and moments from the Royal Parks, this is a neighbourhood that benefits from enviable access to the energy and tranquillity of London life. With excellent connectivity across the capital and beyond, here residents can enjoy the best of local and global living.

- 1 Al Fresco dining at the famed Chiltern Firehouse
- 2 Serpentine Bar & Kitchen
- 3 Chiltern Street, a vibrant patchwork of independent brands
- 4 Find the original Daunt Books on Marylebone High Street





- 1 The Library
- 2 Wellness & Fitness
- 3 Arrival & Reception
- 4 The Residents Lounge



A SOPHISTICATED SUITE OF SPACES AND SERVICES

Life at 100 George Street will feel effortless and enriching thanks to the discrete concierge and dedicated management team ensuring 24-hour security, as well as a carefully considered suite of social spaces.

CAREFULLY COMPOSED FOR COSMOPOLITAN LIVING

These generously proportioned, homes combine classical Georgian features with modern function and sumptuous comfort. Outside and within, materials of extraordinary quality have been thoughtfully selected for tactility and longevity. Each individual residence is complemented by a series of inviting communal spaces – together providing a sophisticated and elegant canvas for a contemporary life well lived.



- 1 Bathroom
- 2 Reception Room
- 3 Bedroom
- 4 Kitchen

ENQUIRIES

Mark Campbell
+44 (0)7803 150022
Mark.Campbell@native-land.com

DESIGN DEVELOPMENT

Please note that all aspects of the design for 100 George Street are continuously reviewed and Derwent London George Street Limited reserve the right to make alterations to the design without notice.

DESIGN & ART DIRECTION:

Noë & Associates

COPYRIGHT

Copyright for this document is retained by Derwent London George Street Limited. The reproduction of the whole or any part of this document is strictly prohibited.

IMPORTANT NOTICE:

Please note that design development of 100 George Street is ongoing and items of the specification will be liable to change without further notice. All images are indicative only. December 2024.

A DEVELOPMENT BY



IN PARTNERSHIP WITH



SALES REPRESENTATION



 NATIVELANDLIFESTYLE

100GEORGEST.COM

THIS WORDING IS IMPORTANT AND REQUIRES YOUR ATTENTION. IF YOU ARE UNSURE ABOUT ANY OF THE MATTERS SET OUT IN THESE TERMS AND CONDITIONS, PLEASE REFRAIN FROM TAKING ANY ACTION WITHOUT FIRST TAKING APPROPRIATE PROFESSIONAL ADVICE. These particulars and any content within them (including, without limitation, any text, images, photographs, graphic designs, advertisements), is provided for general information only and is no substitute for detailed and specific investigations made by or on your behalf by reference to your specific requirements and circumstances. It is not intended to amount to advice on which you should rely and is not intended to be relied upon by you in making (or refraining from making) any specific investment, purchasing or other decisions. You must obtain professional or specialist advice before taking any action on the basis of the content on our website. These particulars are prepared for the guidance only of prospective owners, tenants and occupants. They are intended to give a fair overall description of the property but are not intended to constitute part of an offer or contract. Any information contained herein (whether in the text, plans or photographs) should not be relied upon as being a statement or representation of fact. Nothing in these particulars shall be deemed to be a statement that the property is in good working condition or otherwise, nor that any services or facilities are in good working order. Any areas, measurements or distances referred to herein are approximate only. Descriptions of a property are inevitably subjective and the descriptions contained herein are used in good faith as an opinion and not by way of statement or fact. Neither Derwent London George Street Limited nor any of its employees, agents or advisors have any authority to make or give any warranty whatever in relation to this property and no such warranties shall be implied or deemed to be given by any person. Nothing in these particulars is intended to be a representation or to induce any party to enter into any contract or agreement whatsoever. To the fullest extent permitted by law, and save in respect of fraud or fraudulent misrepresentation, Derwent London George Street Limited nor any of its employees, agents or advisors will have any liability under the Misrepresentation Act 1967. PRIVACY NOTICE Native Land Limited is acting as the marketing and sales manager of 100 George Street. In this role Native Land will collect and share personal information about potential or actual purchasers of apartments at 100 George Street with Derwent London George Street Limited (the owners of 100 George Street). For the purposes of UK data protection laws, Native Land and Derwent London are joint controllers of this personal information. Please see the joint controller privacy notice at www.100georgest.com for details about how Native Land and Derwent London process your personal information as joint controllers. © December 2024.