

N° 60

Wozan

APARTMENT 1.7

×

CHRISTIAN BENSE



No. 60 CURZON

Originally the home of the famed Mirabelle restaurant, this iconic building has hosted many erudite figures over its illustrious history, maintaining an air of exclusivity and sophistication. Inspired by the Art Deco movement of the 1930s, the building stands out with its world-class architecture and thoughtfully designed interiors. Comprising 32 unique residences, ranging from spacious studios to luxurious penthouses, it offers the rare opportunity to experience life as a resident in this fashionable corner of Mayfair.

To showcase the elegance and essence of No. 60 Curzon, selected apartments have been styled by eminent interior designers to reflect their vision of refined urban living, highlighting what makes this residence and its surroundings truly special.

Apartment 1.7 has been thoughtfully designed by globally recognised designer, Christian Bense, blending the blank-slate thinking of his South African roots with a nod to the traditional homes and interiors of the UK. His philosophy begins with what's best for the home, layers in what's best for the client, and finishes with a style that serves both, creating spaces that are rational, timeless and sophisticated.







Apartment 1.7, designed by renowned Christian Bense, combines sophisticated elegance with a refined masculine edge. The open-plan kitchen, dining and living area creates a seamless space that feels both inviting and contemporary, an ideal sanctuary for London living. A generous principal bedroom and a beautifully tonal bathroom complete this remarkable home.

Throughout, carefully curated artworks, a palette of light and warm hues, and a rich mix of textures bring depth and character. The result is a space that feels distinctly modern, yet infused with subtle English charm.









AMENITIES

The beautifully crafted interiors by Thierry Despont elevate the residents' areas, blending style, comfort and practicality. A 24-hour concierge, round-the clock security and valet parking in the private underground parking ensure a seamless and welcoming experience every time you come home.

The pool and spa area offers a tranquil retreat combining elegance and relaxation for residents to unwind, while the private meeting room is a refined space for collaboration.

Kiji is the latest addition to the amenities and services which will be located on the ground floor of the building, accessible via street level. A new restaurant set across 8,000 sq ft complete with a bar, lounge and private chef room. The restaurant will showcase the best of Korean cuisine and will be run by the team behind Atomix in New York, recently celebrated as the sixth best restaurant in the world.

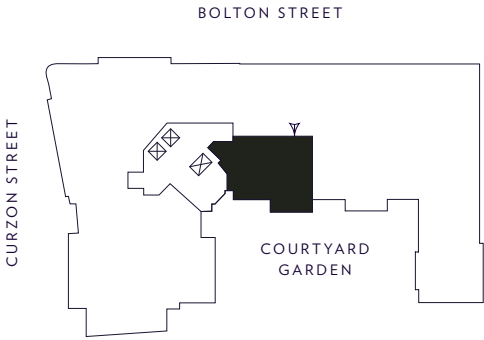
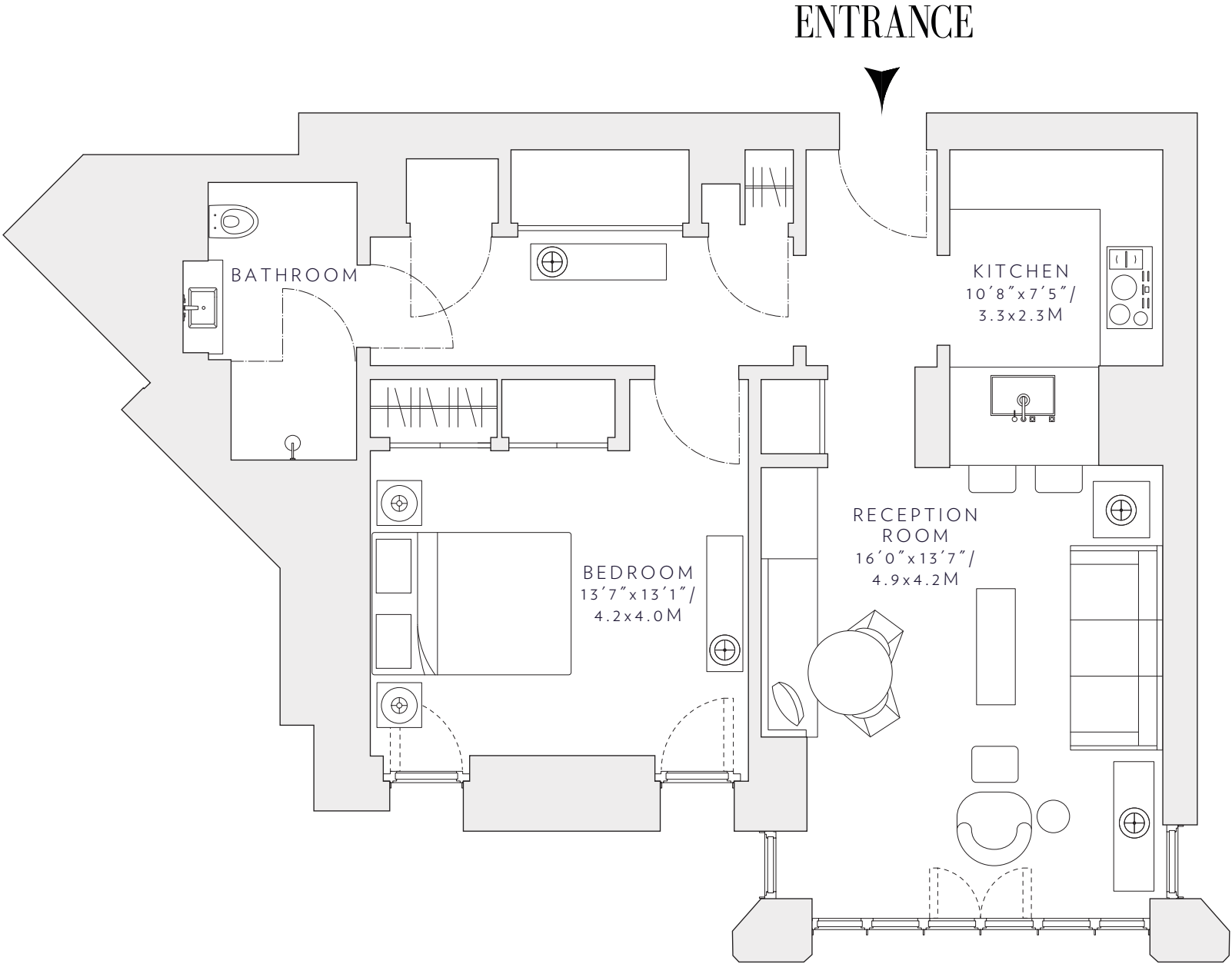
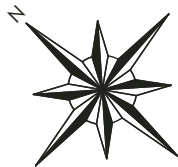
APARTMENT 1.7

ONE BEDROOM / ONE BATHROOM

FIRST FLOOR

INTERNAL AREA
721 sq ft / 67 sq m

CEILING HEIGHT*
9'2" / 2.8m



IMPORTANT NOTICE: Ceiling height is the maximum height taken from a single principal room. Ceiling heights vary within an apartment. Plans are not to scale and are indicative only. They cannot be guaranteed to represent complete interiors/exterior of the property and must not be relied upon as a statement of fact. Any areas, measurements or distances given are approximate only. It is not possible to scale from any drawings. © 2025 All rights reserved.

N° 60
Wozan

For enquiries

PCLD@knightfrank.com

+44 (0)20 7861 5321

