



CENTRE POINT
—
APARTMENT 71



This two bedroom apartment extends to 1,274 sq ft on level 9. The entrance hall, lined with black oak, leads into the contrasting brightness of the main living area.

Full-height timber walls and wardrobes in the bedrooms create a feeling of continuity with the wide-panelled timber flooring, while the introduction of light wool carpets in guest bedrooms adds an extra dimension to the palette.

The intelligent design of the kitchen maximises the space, while the living area is a spectacular vantage point from which to enjoy the views, with this west-facing apartment overlooking Oxford Street.

Central

—

Cosmopolitan

—

Connected

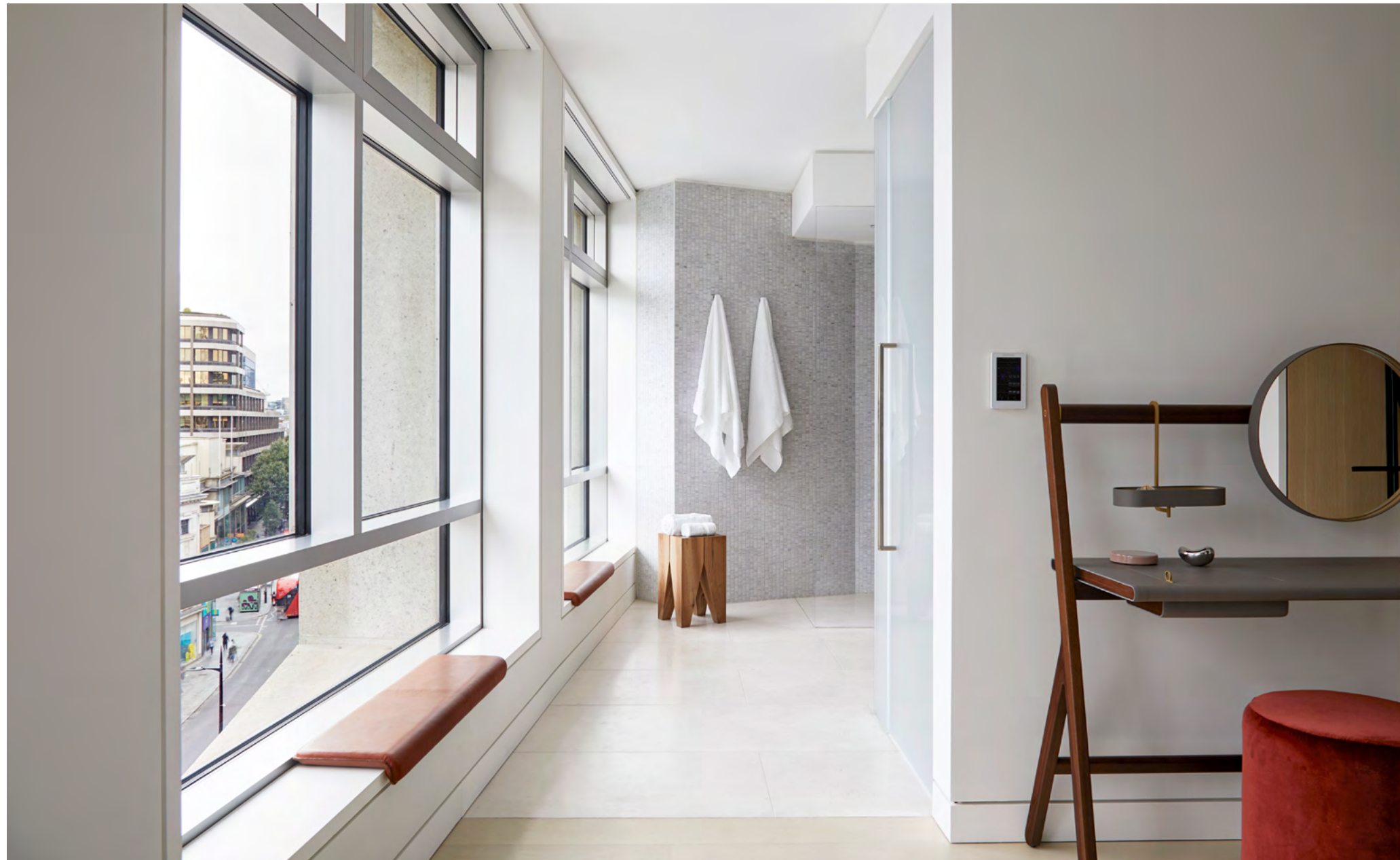










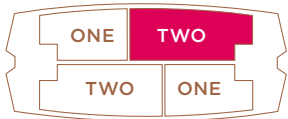




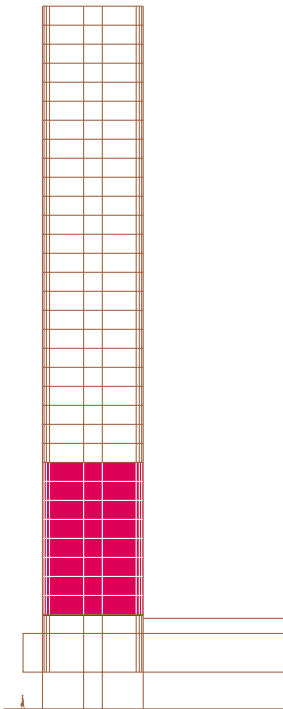




APARTMENT 71



WEST FACING
FLOOR 9



TOTAL AREA

118 sq m
1274 sq ft

KITCHEN & LIVING AREA < >

7.9 x 4.9m
26 x 16ft

PRINCIPAL BEDROOM < >

3.9 x 3.4m
13 x 11ft

BEDROOM 2 < >

5.1 x 3.4m
17 x 11ft

ENTRANCE

Bespoke terrazzo flooring with black granite inlay
Dark stained oak panelled walls and wardrobes
Bevelled mirrors

LIVING AREA

Wide white washed oak board flooring
White painted walls

BEDROOMS

Wide white washed oak board flooring in the principal bedroom
Wool carpet in the second bedroom

KITCHEN

Boffi with top of the range Miele appliances
Corian counter tops and splash backs
White matt lacquer bespoke cabinetry
Wide white washed oak board flooring

PRINCIPAL BATHROOM

Limestone tiled walls, counter top and bath surround
Feature white marble mosaic wall
Bespoke vanity unit with oak drawer
Bespoke recessed lit mirror with demister
Moleanos beige flooring

SECOND BATHROOM

Basalt tiled walls
Marble bath surround
Bespoke vanity unit with white lacquer front and marble top
Bespoke recessed lit mirror with demister
Marble tiled flooring

GUEST WC

Basalt tiled walls and counter top
Bespoke recessed lit mirror with demister
Bespoke terrazzo flooring with black granite inlay

SANITARY WARE

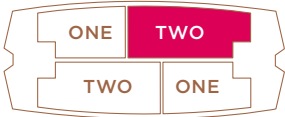
Dornbracht Lulu range in chrome

IRONMONGERY

Bespoke ironmongery designed by Conran & Partners
in collaboration with Samuel Heath

Specifications are for indicative purposes only
Floor areas are approximate

APARTMENT 71



WEST FACING
FLOOR 9

TOTAL AREA

118 sq m
1274 sq ft

KITCHEN & LIVING AREA < >

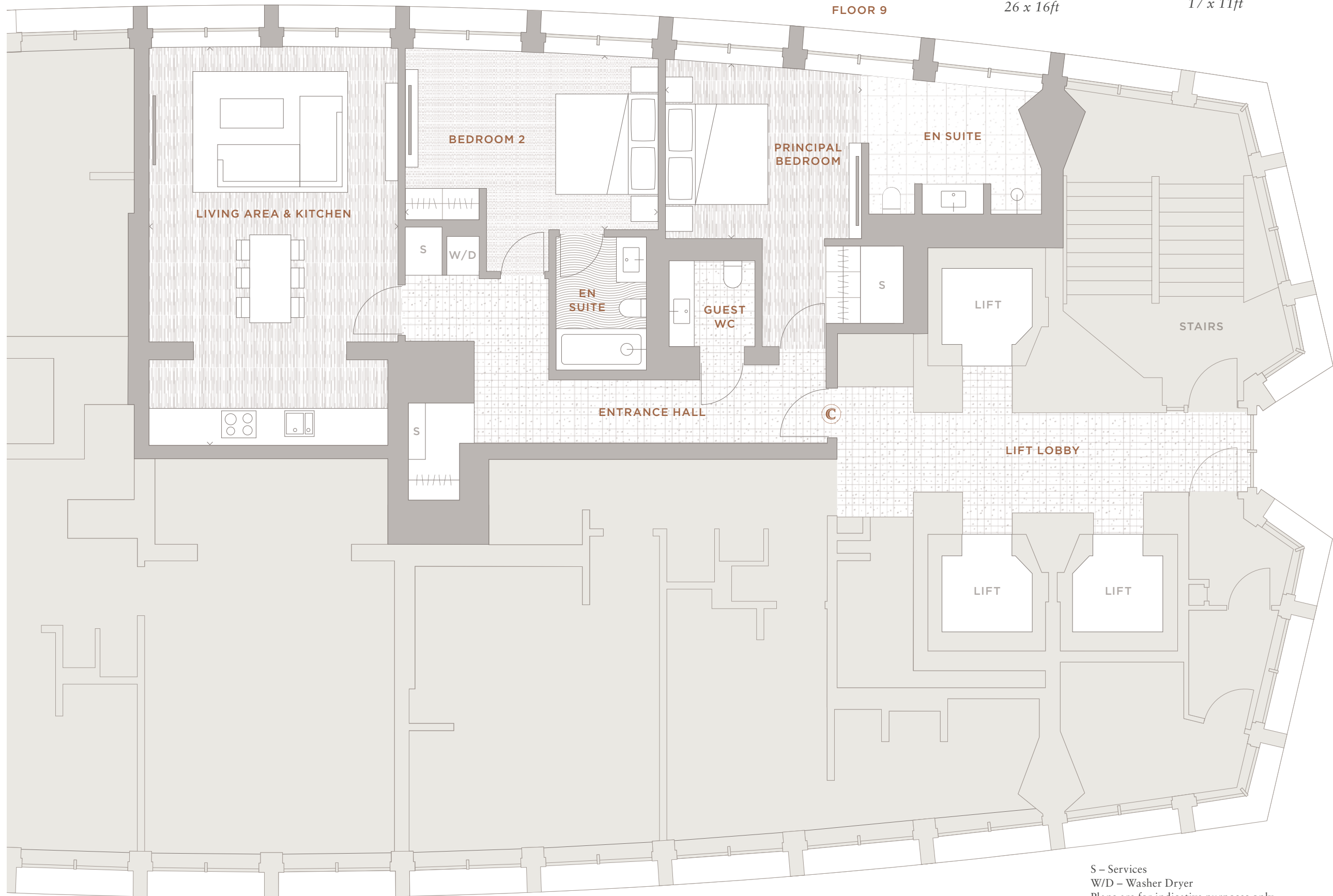
7.9 x 4.9m
26 x 16ft

PRINCIPAL BEDROOM < >

3.9 x 3.4m
13 x 11ft

BEDROOM 2 < >

5.1 x 3.4m
17 x 11ft



S – Services
W/D – Washer Dryer
Plans are for indicative purposes only

CENTRE POINT

RESIDENCES WC1

1. The particulars contained in this PDF are for guidance only. The accuracy of any information in this PDF is not guaranteed and any prospective purchasers must not rely on such information as statements of fact or representations and must satisfy themselves as to its accuracy. This PDF has been prepared in good faith and whilst Almacantar and any joint agents endeavour to ensure that the content is correct at the time of publication it does not offer any warranty or guarantee of any kind in relation to the accuracy of the content. The details of the properties included in this PDF are not intended to be complete descriptions of the properties and you should conduct your own thorough investigation into the properties before committing to purchase. The content of this PDF does not and may not form part of any contract between Almacantar and any prospective purchaser of the properties referred to in this PDF and may not be treated as a statement or representation of fact. Almacantar and any joint agents shall not be liable to the extent permissible by law from the use by you of the information provided in this PDF. 2. Any areas, measurements or distances given in this PDF are approximate only. 3. Annual service charges will be payable.