

Summerfield Avenue, Queen's Park NW6

---





# Summerfield Avenue, Queen's Park **NW6**

Situated within a charming Victorian terrace on a highly coveted street nestled between Queen's Park and Salusbury Road, this meticulously crafted four bedroom home showcases exquisite finishing touches.

The interiors have been thoughtfully designed with meticulous attention to detail and a distinctive, sophisticated style. Upon entering, a luxuriously appointed double reception room welcomes you, featuring a bay window and two striking fireplaces. Natural light permeates the space from the rear, creating a seamless flow into the kitchen through a semi open plan layout.



**Guide price:** £2,350,000

**Tenure:** Freehold

**Local authority:** London Borough of Brent

**Council tax band:** F











The kitchen stands as a modern masterpiece at the heart of the home, boasting sleek contemporary units, a glass side extension, and bifolding doors that open directly onto the garden, offering a seamless indoor-outdoor experience.

Ascending to the first floor, three generously sized bedrooms, including the principal bedroom with its private en suite and ample built-in storage, await. The family bathroom on this level exudes a unique Skandi finish, echoing the home's overall sense of style.

Completing the well thought-out layout, the loft has been converted into an additional bedroom, adding the final touch to this exceptional family home.









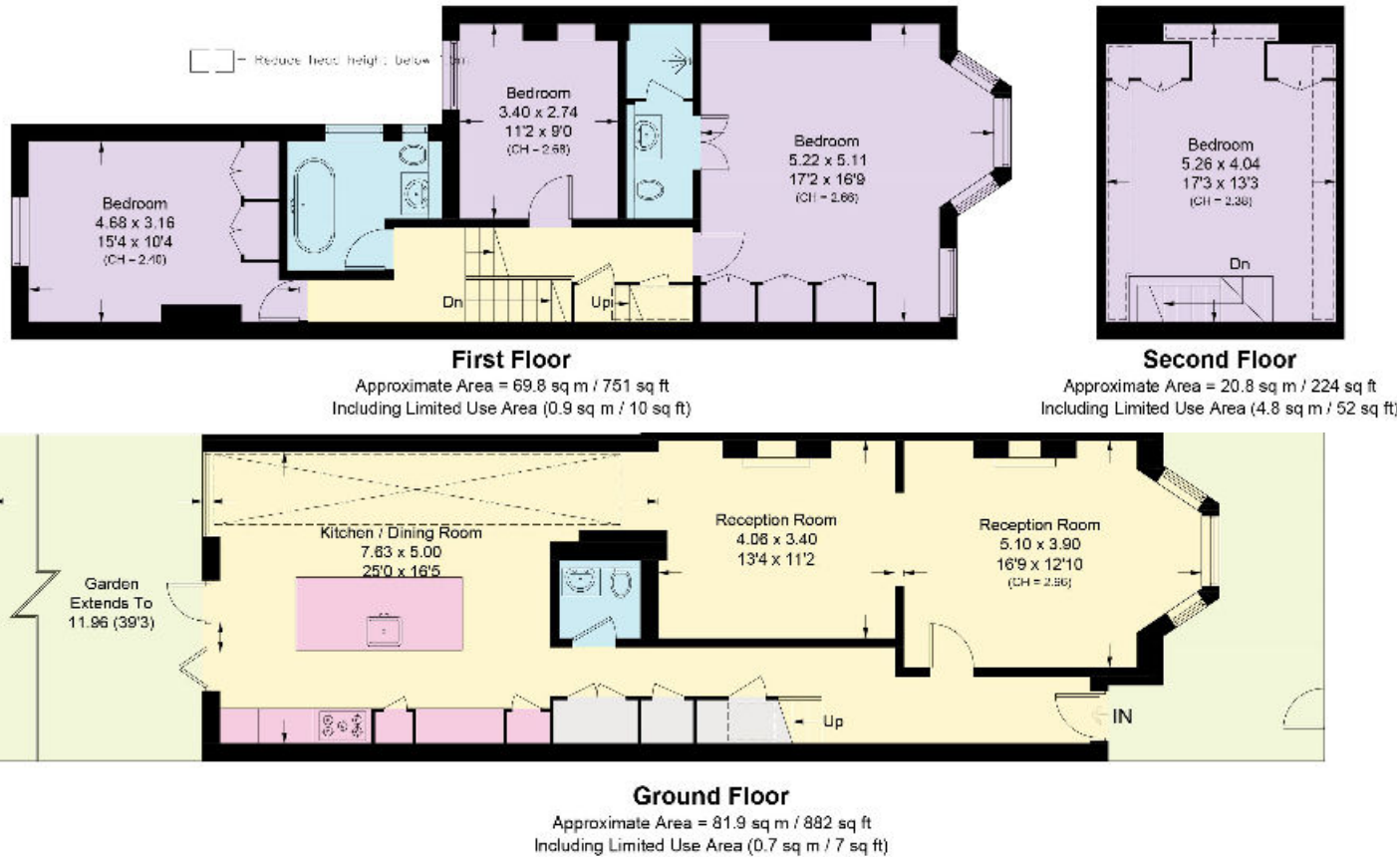
# Summerfield Avenue, NW6

Total Area = 173.6 sq m / 1,868 sq ft

Including limited use area



This plan is for guidance only and must not be relied upon as a statement of fact. Attention is drawn to the important notice on the last page of the text of the Particulars.



Knight Frank  
Queens Park  
60c Salusbury Road  
NW6 6NP

[knightfrank.co.uk](https://www.knightfrank.co.uk)

We would be delighted to tell you more

Queen's Park  
020 3815 3020  
[queenspark@knightfrank.com](mailto:queenspark@knightfrank.com)



Fixtures and fittings: A list of the fitted carpets, curtains, light fittings and other items fixed to the property which are included in the sale (or may be available by separate negotiation) will be provided by the Seller's Solicitors.

Important Notice: 1. Particulars: These particulars are not an offer or contract, nor part of one. You should not rely on statements by Knight Frank LLP in the particulars or by word of mouth or in writing ("information") as being factually accurate about the property, its condition or its value. Neither Knight Frank LLP nor any joint agent has any authority to make any representations about the property, and accordingly any information given is entirely without responsibility on the part of the agents, seller(s) or lessor(s). 2. Photos, Videos etc: The photographs, property videos and virtual viewings etc. show only certain parts of the property as they appeared at the time they were taken. Areas, measurements and distances given are approximate only. 3. Regulations etc: Any reference to alterations to, or use of, any part of the property does not mean that any necessary planning, building regulations or other consent has been obtained. A buyer or lessee must find out by inspection or in other ways that these matters have been properly dealt with and that all information is correct. 4. VAT: The VAT position relating to the property may change without notice. 5. To find out how we process Personal Data, please refer to our Group Privacy Statement and other notices at <https://www.knightfrank.com/legals/privacy-statement>.

Particulars dated March 2024. Photographs and videos dated March 2024.

Knight Frank is the trading name of Knight Frank LLP. Knight Frank LLP is a limited liability partnership registered in England and Wales with registered number OC305934. Our registered office is at 55 Baker Street, London W1U 8AN where you may look at a list of members' names. If we use the term 'partner' when referring to one of our representatives, that person will either be a member, employee, worker or consultant of Knight Frank LLP and not a partner in a partnership. If you do not want us to contact you further about our services then please contact us by either calling 020 3544 0692, email to [marketing.help@knightfrank.com](mailto:marketing.help@knightfrank.com) or post to our UK Residential Marketing Manager at our registered office (above) providing your name and address.