

Brooksville Avenue, Queen's Park



Brooksville Avenue, Queen's Park NW6

Introducing a true masterpiece in the heart of Queen's Park, a meticulously renovated house on one of the most coveted streets in the neighbourhood.

This home is a harmonious blend of timeless elegance and modern luxury. The result is a home that exudes sophistication and offers the pinnacle of refined living. From the moment you enter, you are greeted by an ambiance of warmth and style. The open concept layout seamlessly connects the living spaces, creating an inviting environment that's perfect for both relaxed family living and grand entertaining.



Guide price: £2,500,000

Tenure: Freehold

Local authority: London Borough of Brent

Council tax band: F





No expense has been spared in the renovation of this Queen's Park townhouse. High-end finishes, top-of-the-line appliances, and exquisite craftsmanship can be found throughout. The house offers over 2000 sqft and includes 3 generous bedrooms and 3 bathrooms, ensuring comfort and privacy for every member of the household. The principal suite is a true sanctuary, featuring a walk in dressing room and en suite bathroom.

Outside, the enchantment continues with a landscaped, sun soaked south facing garden. One of Queen's Park's most desirable streets, Brooksville Avenue, offers convenience nestled between the park and the amenities of the fashionable Salusbury Road. Whether it's a leisurely stroll in the park or exploring the vibrant local scene, everything you need is within reach.



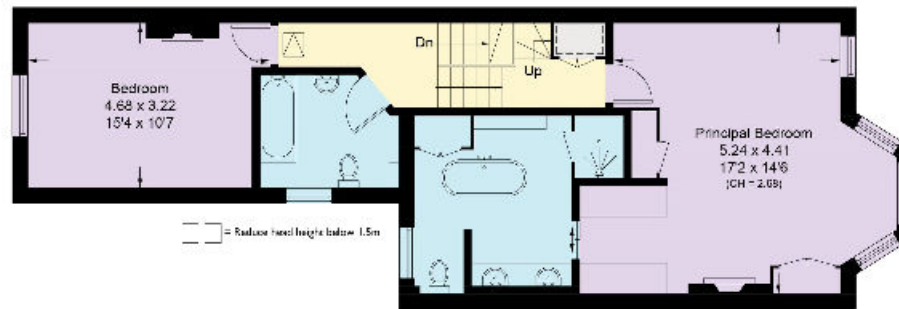


Brooksville Avenue, NW6

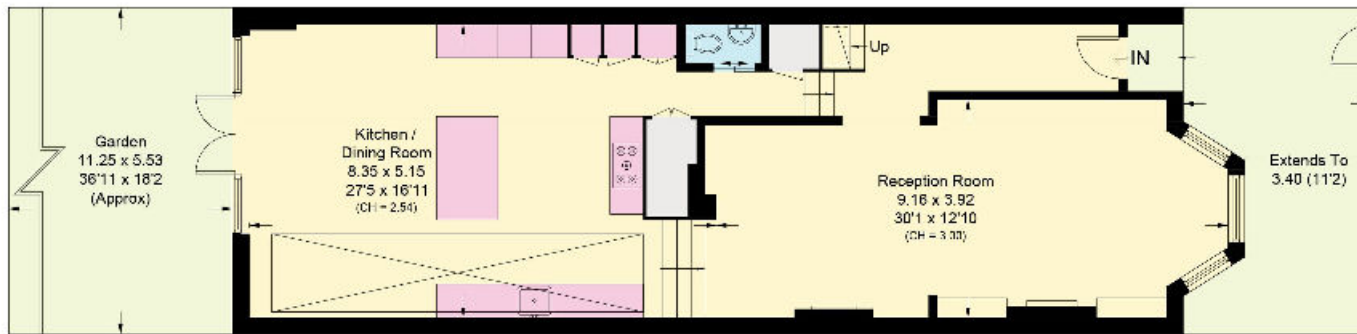
Approximate Area = 192.9 sq m / 2076 sq ft (Excluding Void)



Second Floor
Approximate Area = 35.5 sq m / 382 sq ft
(Excluding Void)
Including Limited Use Area (11.1 sq m / 123 sq ft)



First Floor
Approximate Area = 69.8 sq m / 749 sq ft
Including Limited Use Area (0.8 sq m / 8 sq ft)



Ground Floor
Approximate Area = 87.5 sq m / 945 sq ft
Including Limited Use Area (0.4 sq m / 4 sq ft)

This plan is for guidance only and must not be relied upon as a statement of fact. Attention is drawn to the important notice on the last page of the text of the Particulars.

Knight Frank

Queen's Park
60c Salusbury Road
NW6 6NP
knightfrank.co.uk

We would be delighted to tell you more

Queen's Park
020 3815 3020
queenspark@knightfrank.com



Fixtures and fittings: A list of the fitted carpets, curtains, light fittings and other items fixed to the property which are included in the sale (or may be available by separate negotiation) will be provided by the Seller's Solicitors.

Important Notice: 1. Particulars: These particulars are not an offer or contract, nor part of one. You should not rely on statements by Knight Frank LLP in the particulars or by word of mouth or in writing ("information") as being factually accurate about the property, its condition or its value. Neither Knight Frank LLP nor any joint agent has any authority to make any representations about the property, and accordingly any information given is entirely without responsibility on the part of the agents, seller(s) or lessor(s). 2. Photos, Videos etc: The photographs, property videos and virtual viewings etc. show only certain parts of the property as they appeared at the time they were taken. Areas, measurements and distances given are approximate only. 3. Regulations etc: Any reference to alterations to, or use of, any part of the property does not mean that any necessary planning, building regulations or other consent has been obtained. A buyer or lessee must find out by inspection or in other ways that these matters have been properly dealt with and that all information is correct. 4. VAT: The VAT position relating to the property may change without notice. 5. To find out how we process Personal Data, please refer to our Group Privacy Statement and other notices at <https://www.knightfrank.com/legals/privacy-statement>.

Particulars dated August 2023. Photographs and videos dated August 2023.

Knight Frank is the trading name of Knight Frank LLP. Knight Frank LLP is a limited liability partnership registered in England and Wales with registered number OC305934. Our registered office is at 55 Baker Street, London W1U 8AN where you may look at a list of members' names. If we use the term 'partner' when referring to one of our representatives, that person will either be a member, employee, worker or consultant of Knight Frank LLP and not a partner in a partnership. If you do not want us to contact you further about our services then please contact us by either calling 020 3544 0692, email to marketing.help@knightfrank.com or post to our UK Residential Marketing Manager at our registered office (above) providing your name and address.