

Thanet Lodge, London NW2



Thanet Lodge, London NW2

A bright and spacious 964 sq ft penthouse apartment situated within a well maintained purpose built block in the ever popular Mapesbury Conservation Area.

The property provides a light-filled reception room, a separate kitchen with integrated appliances, two well-proportioned double bedrooms and two bathrooms.

Further benefits include a large wrap around balcony with uninterrupted views of the London Skyline, off street parking and leafy communal gardens. Thanet Lodge is offered on a chain free basis.



Tenure: Leasehold, approximately 980years remaining

Service charge: £4,800 per annum, we have been unable to confirm the review period. Please make your own enquiries.

Ground rent: £350 per annum, we have been unable to confirm the review period.

Local authority: London Borough of Brent

Council tax band: D



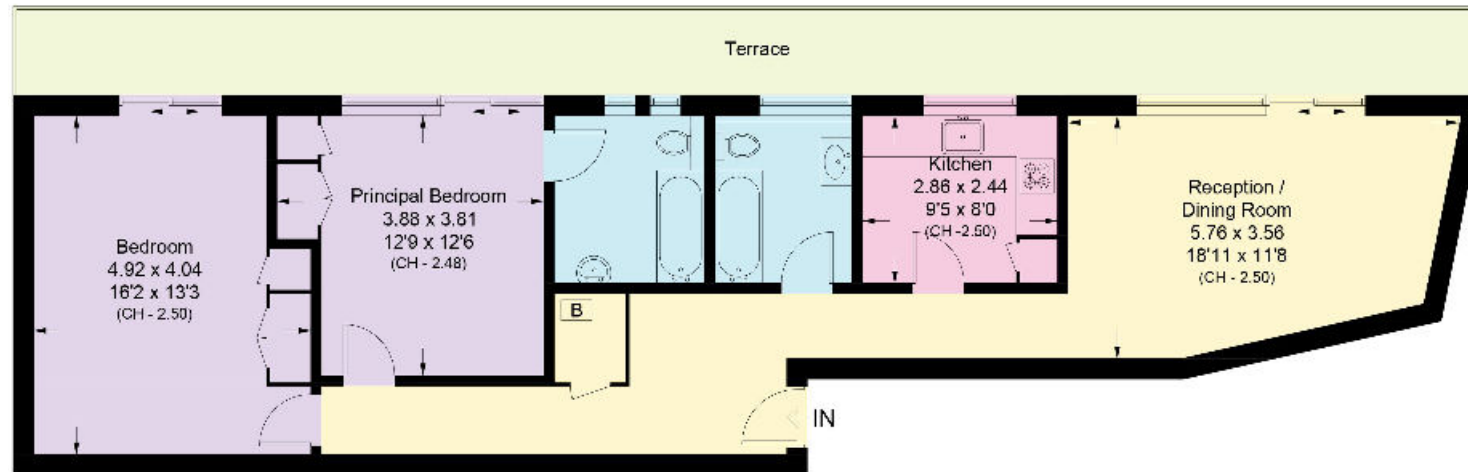
The flat is located close to local amenities including the upmarket delis, independent eateries and gastropubs of Queens Park & West Hampstead. Convenient transport links are within walking distance: Kilburn (Jubilee - Zone 2) Brondesbury & Brondesbury Park (Overland), Queens Park, West Hampstead (Thameslink) & there is also easy access to several bus routes.





Thanet Lodge, Mapesbury Road, NW2

Approximate Area = 88.6 sq m / 964 sq ft
Including Limited Use Area (1 sq m / 11 sq ft)



Fourth Floor

Approximate Area = 88.6 sq m / 954 sq ft
Including Limited Use Area (1.0 sq m / 11 sq ft)

This plan is for guidance only and must not be relied upon as a statement of fact. Attention is drawn to the important notice on the last page of the text of the Particulars.

Knight Frank
Queen's Park
60 Salusbury Road
NW6 6NP

We would be delighted to tell you more

Queen's Park
020 3815 3020
queenspark@knightfrank.com

[knightfrank.co.uk](https://www.knightfrank.co.uk)



Fixtures and fittings: A list of the fitted carpets, curtains, light fittings and other items fixed to the property which are included in the sale (or may be available by separate negotiation) will be provided by the Seller's Solicitors.

Important Notice: 1. Particulars: These particulars are not an offer or contract, nor part of one. You should not rely on statements by Knight Frank LLP in the particulars or by word of mouth or in writing ("information") as being factually accurate about the property, its condition or its value. Neither Knight Frank LLP nor any joint agent has any authority to make any representations about the property, and accordingly any information given is entirely without responsibility on the part of the agents, seller(s) or lessor(s). 2. Photos, Videos etc: The photographs, property videos and virtual viewings etc. show only certain parts of the property as they appeared at the time they were taken. Areas, measurements and distances given are approximate only. 3. Regulations etc: Any reference to alterations to, or use of, any part of the property does not mean that any necessary planning, building regulations or other consent has been obtained. A buyer or lessee must find out by inspection or in other ways that these matters have been properly dealt with and that all information is correct. 4. VAT: The VAT position relating to the property may change without notice. 5. To find out how we process Personal Data, please refer to our Group Privacy Statement and other notices at <https://www.knightfrank.com/legals/privacy-statement>. Particulars dated November 2023. Photographs and videos dated November 2023.

Knight Frank is the trading name of Knight Frank LLP. Knight Frank LLP is a limited liability partnership registered in England and Wales with registered number OC305934. Our registered office is at 55 Baker Street, London W1U 8AN where you may look at a list of members' names. If we use the term 'partner' when referring to one of our representatives, that person will either be a member, employee, worker or consultant of Knight Frank LLP and not a partner in a partnership. If you do not want us to contact you further about our services then please contact us by either calling 020 3544 0692, email to marketing.help@knightfrank.com or post to our UK Residential Marketing Manager at our registered office (above) providing your name and address.