

Dynham Road, London NW6



Dynham Road, London NW6

Located on the sought-after Dynham Road, this charming mid-terrace house features four bedrooms and offers a distinctly spacious, light-filled ambiance with its high ceilings and neutral tones.

As you step inside, you're welcomed by a delightful entrance hall leading to the airy reception room featuring a striking fireplace and ornate ceiling rose. At the rear of the house, the generously sized kitchen/diner awaits, complete with French doors opening onto the secluded 26 ft rear garden.



Guide price: £1,600,000

Tenure: Freehold

Local authority: London Borough of Camden

Council tax band: F





Ascending to the first floor, you'll discover the luxurious primary bedroom suite, adorned with mirrored fitted wardrobes and bay windows. Also on this level are a second double bedroom, a four-piece bathroom suite, and a separate WC. The second floor offers two additional double bedrooms, both boasting ample fitted wardrobes, accompanied by a spacious bathroom. Planning permission has also been approved to further extend into the side return - proposed plans available.

Dynham Road's prime location ensures easy access to local shops, restaurants, and amenities along West End Lane. Moreover, excellent transport connections including Jubilee, Overground, and Thameslink services are conveniently accessible at nearby West Hampstead.





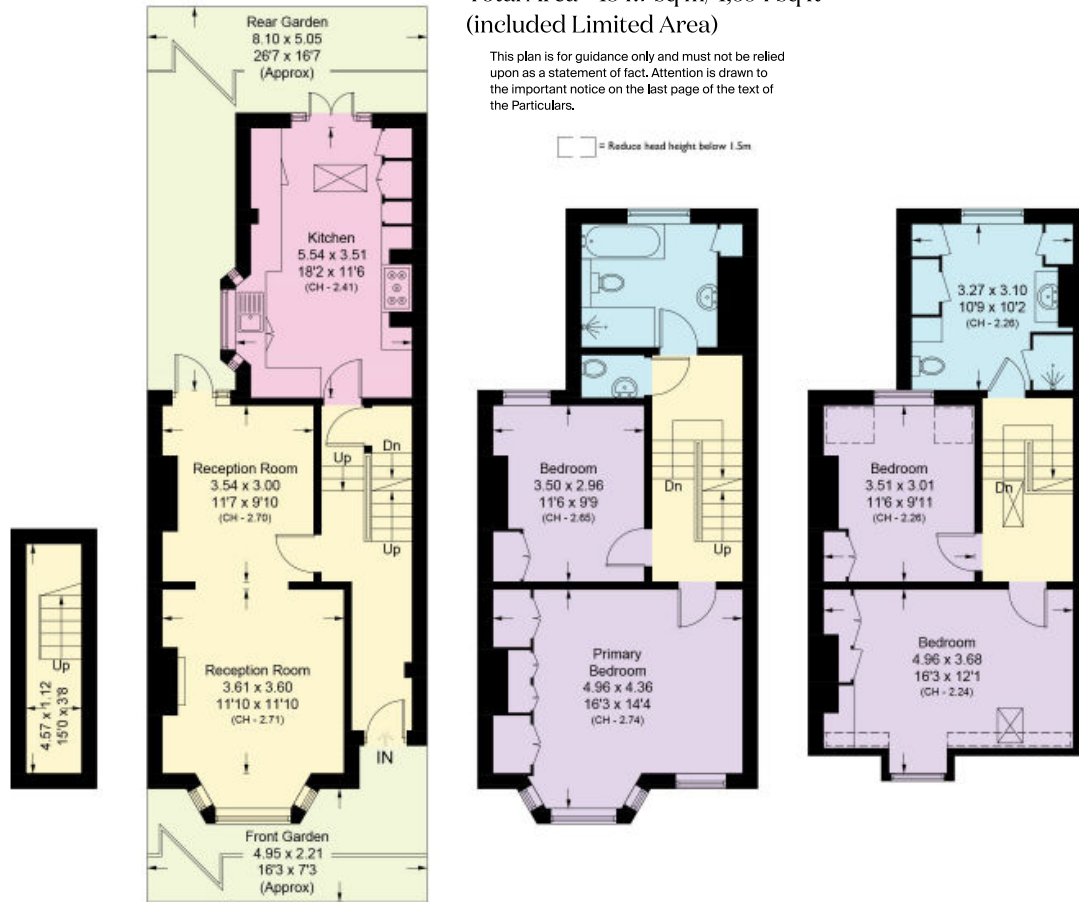
Dynham Road, London NW6

Total Area = 154.7 sq m / 1,694 sq ft
(included Limited Area)



This plan is for guidance only and must not be relied upon as a statement of fact. Attention is drawn to the important notice on the last page of the text of the Particulars.

= Reduce head height below 1.5m



Knight Frank

Lower Ground Floor

Approximate Area
5.0 sq m / 54 sq ft

Ground Floor

Approximate Area
54.9 sq m / 591 sq ft

First Floor

Approximate Area
49.0 sq m / 527 sq ft

Second Floor

Approximate Area
45.8 sq m / 493 sq ft
Including Limited Use Area (2.7 sq m / 29 sq ft)

Queen's Park
60c Salusbury Road
NW6 6NP
knightfrank.co.uk

We would be delighted to tell you more

Queen's Park
020 3815 3020
queenspark@knightfrank.com



Fixtures and fittings: A list of the fitted carpets, curtains, light fittings and other items fixed to the property which are included in the sale (or may be available by separate negotiation) will be provided by the Seller's Solicitors.

Important Notice: 1. Particulars: These particulars are not an offer or contract, nor part of one. You should not rely on statements by Knight Frank LLP in the particulars or by word of mouth or in writing ("information") as being factually accurate about the property, its condition or its value. Neither Knight Frank LLP nor any joint agent has any authority to make any representations about the property, and accordingly any information given is entirely without responsibility on the part of the agents, seller(s) or lessor(s). 2. Photos, Videos etc: The photographs, property videos and virtual viewings etc. show only certain parts of the property as they appeared at the time they were taken. Areas, measurements and distances given are approximate only. 3. Regulations etc: Any reference to alterations to, or use of, any part of the property does not mean that any necessary planning, building regulations or other consent has been obtained. A buyer or lessee must find out by inspection or in other ways that these matters have been properly dealt with and that all information is correct. 4. VAT: The VAT position relating to the property may change without notice. 5. To find out how we process Personal Data, please refer to our Group Privacy Statement and other notices at <https://www.knightfrank.com/legals/privacy-statement>.

Particulars dated February 2024. Photographs and videos dated February 2024.

Knight Frank is the trading name of Knight Frank LLP. Knight Frank LLP is a limited liability partnership registered in England and Wales with registered number OC305934. Our registered office is at 55 Baker Street, London W1U 8AN where you may look at a list of members' names. If we use the term 'partner' when referring to one of our representatives, that person will either be a member, employee, worker or consultant of Knight Frank LLP and not a partner in a partnership. If you do not want us to contact you further about our services then please contact us by either calling 020 3544 0692, email to marketing.help@knightfrank.com or post to our UK Residential Marketing Manager at our registered office (above) providing your name and address.