

Library Apartments, Bathurst Gardens NW10



Library Apartments, Bathurst Gardens NW10

Behind its modest yet elegant exterior, a former library has been transformed into a collection of four luxury apartments, including this stunning two-bedroom loft-style residence.

Spanning 1,178 sq. ft, the home boasts an expansive open-plan kitchen and reception room with soaring vaulted ceilings, accentuated by exposed trusses that add a sense of grandeur. Strategically placed windows flood the space with natural light. The apartment features two generously sized double bedrooms, one of which includes fitted storage



Guide price: £950,000

Tenure: Share of freehold plus leasehold, approximately 993 years remaining

Service charge: Please note we have been unable to confirm the service charge, ground rent and review periods. You should ensure you make your own enquiries.

Local authority: London Borough of Brent

Council tax band: D





The luxurious bathroom has been designed with serenity and sanctuary in mind, equipped with two rainfall showers and a roll-top bath. Completing the home is a charming roof terrace with panoramic views of Kensal Rise.

Further benefits include, keyless entry fobs / video entry systems, private storage lockers in the main entrance hall, vaulted ceilings, chain free and a share of the freehold.




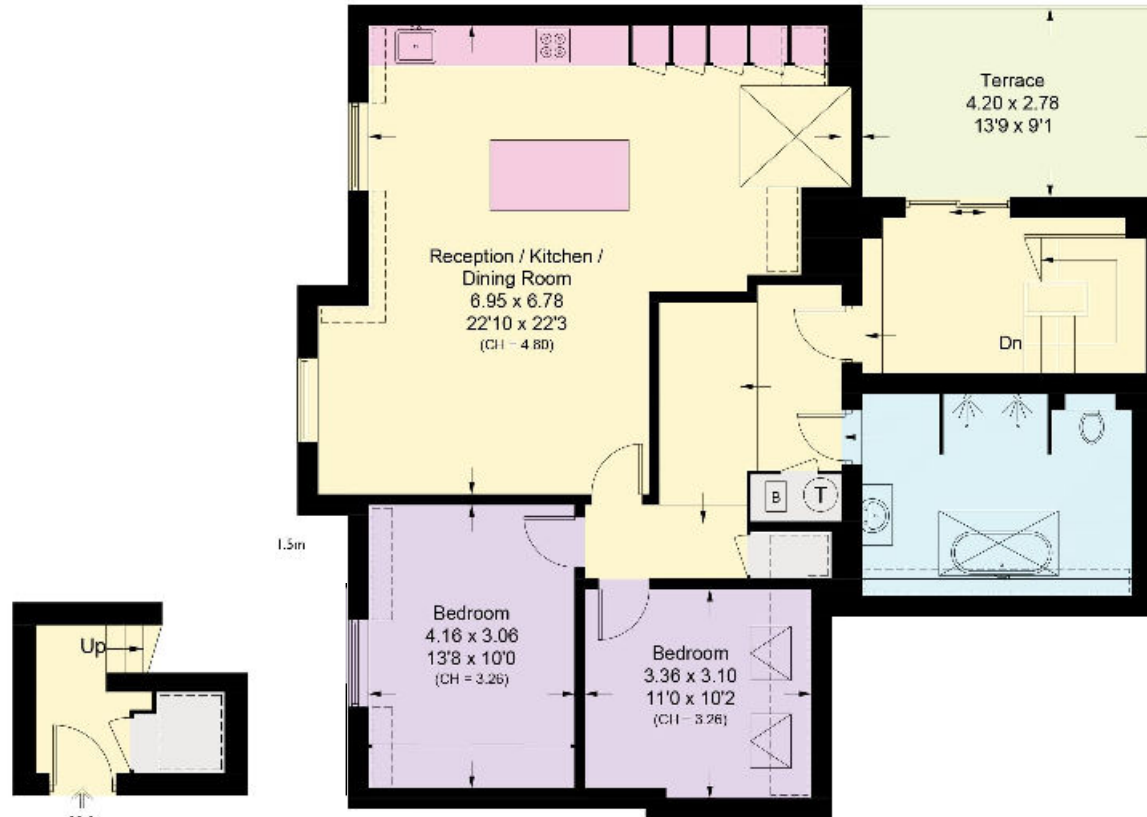


Library Apartments, Bathurst Gardens, NW10

Approximate Area = 109.5 sq m / 1178 sq ft



 = Reduce head height below 1.5m



First Floor

Approximate Area = 4.3 sq m / 46 sq ft
Including Limited Use Area (1.0 sq m / 11 sq ft)

Second Floor

Approximate Area = 105.2 sq m / 1132 sq ft
Including Limited Use Area (7.4 sq m / 80 sq ft)

This plan is for guidance only and must not be relied upon as a statement of fact. Attention is drawn to the important notice on the last page of the text of the Particulars.

Knight Frank

Queen's Park
60c Salusbury Road
NW6 6NP

[knightfrank.co.uk](https://www.knightfrank.co.uk)

We would be delighted to tell you more

Queen's Park
020 3815 3020
queenspark@knightfrank.com



Fixtures and fittings: A list of the fitted carpets, curtains, light fittings and other items fixed to the property which are included in the sale (or may be available by separate negotiation) will be provided by the Seller's Solicitors.

Important Notice: 1. Particulars: These particulars are not an offer or contract, nor part of one. You should not rely on statements by Knight Frank LLP in the particulars or by word of mouth or in writing ("information") as being factually accurate about the property, its condition or its value. Neither Knight Frank LLP nor any joint agent has any authority to make any representations about the property, and accordingly any information given is entirely without responsibility on the part of the agents, seller(s) or lessor(s). 2. Photos, Videos etc: The photographs, property videos and virtual viewings etc. show only certain parts of the property as they appeared at the time they were taken. Areas, measurements and distances given are approximate only. 3. Regulations etc: Any reference to alterations to, or use of, any part of the property does not mean that any necessary planning, building regulations or other consent has been obtained. A buyer or lessee must find out by inspection or in other ways that these matters have been properly dealt with and that all information is correct. 4. VAT: The VAT position relating to the property may change without notice. 5. To find out how we process Personal Data, please refer to our Group Privacy Statement and other notices at <https://www.knightfrank.com/legals/privacy-statement>. Particulars dated September 2024. Photographs and videos dated September 2024.

Knight Frank is the trading name of Knight Frank LLP. Knight Frank LLP is a limited liability partnership registered in England and Wales with registered number OC305934. Our registered office is at 55 Baker Street, London W1U 8AN where you may look at a list of members' names. If we use the term 'partner' when referring to one of our representatives, that person will either be a member, employee, worker or consultant of Knight Frank LLP and not a partner in a partnership. If you do not want us to contact you further about our services then please contact us by either calling 020 3544 0692, email to marketing.help@knightfrank.com or post to our UK Residential Marketing Manager at our registered office (above) providing your name and address.