

South End House

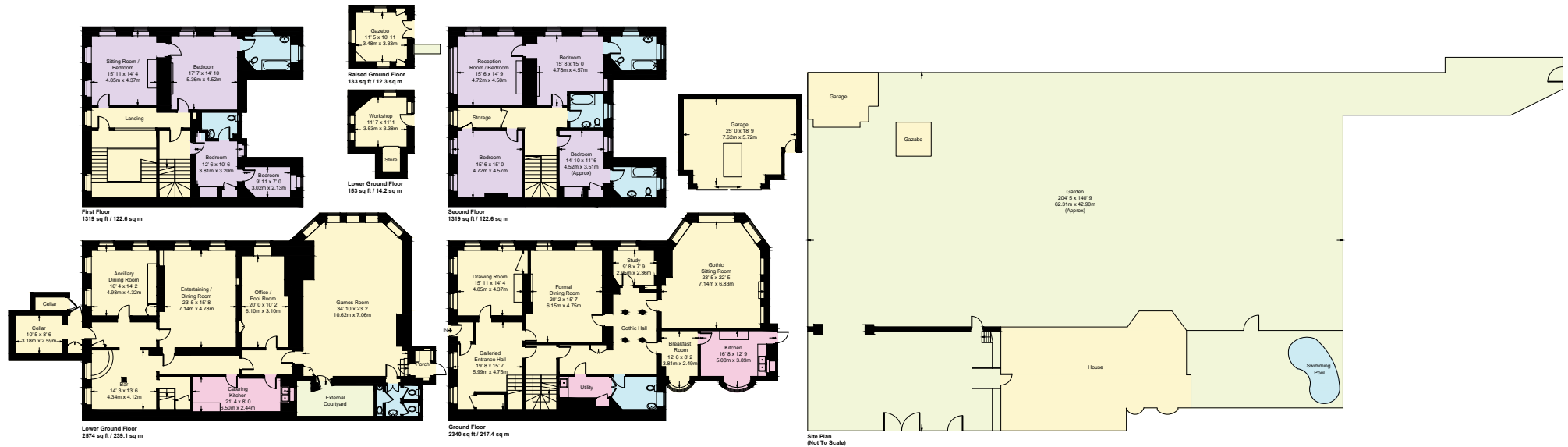
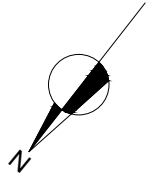
Approximate Gross Internal Area = 7838 sq ft / 728.2 sq m

(Excluding Swimming Pool)

Cellar = 21 sq ft / 2 sq m

Garage = 440 sq ft / 40.9 sq m

Total = 8299 sq ft / 771.1 sq m



Not to scale, for guidance only and must not be relied upon as a statement of fact
 All measurements and areas are approximate only and have been prepared in
 accordance with the current edition of the RICS Code of Measuring Practice