

Clevedon Road, Twickenham

TWI





Please note, the furniture in this image has been virtually staged.



A superb apartment in the popular Richmond Bridge Development.



This spacious first floor apartment is located in the prestigious Richmond Bridge Development, just moments from the River Thames and Richmond town centre.

The apartment briefly comprises: an entrance hall, beautifully bright reception room with access to a private balcony, a separate fully integrated kitchen, principal bedroom with en suite shower room and built-in wardrobes, a further double bedroom and a family bathroom. The property benefits from a secure underground parking space, access to a residents' gym, well-maintained communal gardens and a concierge service.



Please note, the furniture in this image has been virtually staged.



Please note, the furniture in this image has been virtually staged.



Leicester Court is located in the landmark Richmond Bridge Development and accessed via a secure gate on Clevedon Road.

The property is well-situated for access to both Richmond town centre (0.7 mile), St Margaret's (0.9 mile) and many of the area's superb attractions such as the River Thames (0.1 mile), Richmond Green (0.6 mile) and the 2,500 acres of Richmond Park (1.1 miles).

Local transport links include numerous bus routes to surrounding areas, plus frequent trains to Central London via South West trains from St. Margaret's and Richmond stations and London Underground's District Line (West End 38 minutes) from Richmond station. The property is conveniently placed for access to the A316/M3, M4 and M25 motorways. Heathrow Airport is 8 miles away and can be reached easily by road, train or bus.

*All distances are approximate.

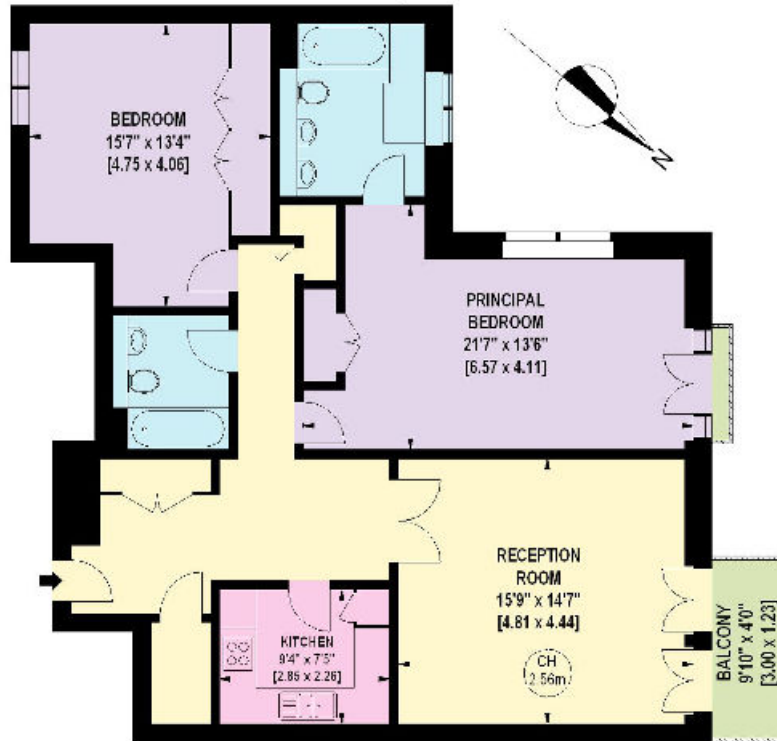


Please note that virtually staged photographs are used for illustrative purposes only.

Leicester Court, TW1

Approximate Gross Internal Area: 101.35 Sq. metres
1091 Sq. feet

Approximate Gross Balcony Area: 4.27 Sq. metres
46 Sq. feet



This plan is for guidance only and must not be relied upon as a statement of fact. Attention is drawn to the Important Notice on the last page of the text of the Particulars

FIRST FLOOR

Knight Frank
Richmond
23 Hill Street
Richmond
TW9 1SX

[knightfrank.co.uk](https://www.knightfrank.co.uk)

We would be delighted to tell you more.

The Richmond sales team
020 8939 2800
richmond@knightfrank.com



Fixtures and fittings: A list of the fitted carpets, curtains, light fittings and other items fixed to the property which are included in the sale (or may be available by separate negotiation) will be provided by the Seller's Solicitors.

Important Notice: 1. Particulars: These particulars are not an offer or contract, nor part of one. You should not rely on statements by Knight Frank LLP in the particulars or by word of mouth or in writing as being factually accurate about the property, its condition or its value. Neither Knight Frank LLP nor any joint agent has any authority to make any representations about the property, and accordingly any information given is entirely without responsibility on the part of the agents, seller(s) or lessor(s). 2. Photos, Videos etc: The photographs, property videos and virtual viewings etc. show only certain parts of the property as they appeared at the time they were taken. Areas, measurements and distances given are approximate only. 3. Regulations etc: Any reference to alterations to, or use of, any part of the property does not mean that any necessary planning, building regulations or other consent has been obtained. A buyer or lessee must find out by inspection or in other ways that these matters have been properly dealt with and that all information is correct. 4. VAT: The VAT position relating to the property may change without notice. 5. To find out how we process Personal Data, please refer to our Group Privacy Statement and other notices at <https://www.knightfrank.com/legals/privacy-statement>.

Particulars dated August 2021. Photographs and videos dated August 2021.

Knight Frank is the trading name of Knight Frank LLP. Knight Frank LLP is a limited liability partnership registered in England and Wales with registered number OC305934. Our registered office is at 55 Baker Street, London W1U 8AN where you may look at a list of members' names. If we use the term 'partner' when referring to one of our representatives, that person will either be a member, employee, worker or consultant of Knight Frank LLP and not a partner in a partnership. If you do not want us to contact you further about our services then please contact us by either calling 020 3544 0692, email to marketing.help@knightfrank.com or post to our UK Residential Marketing Manager at our registered office (above) providing your name and address.



Connecting people & property, perfectly.