



Petersham Road, Richmond TW10



Petersham Road, Richmond TW10

A wonderfully light and spacious two bedroom split-level apartment in an enviable riverside location in Richmond.

Spanning 949 sq ft, the property briefly on the ground floor: spacious fully integrated kitchen and a generous reception room with two sets of French doors that provide access to a charming south west-facing decked terrace that overlooks the private garden and River Thames.

On the first floor there are two spacious double bedrooms that benefit from views over the River Thames and a beautifully well appointed bathroom.

An exciting feature of this property is the private garden accessed from the rear terrace which provides an ideal area for entertaining during the summer months.



Guide price: £900,000

Tenure: Share of freehold

Service charge: N/A

Ground rent: N/A

Local authority: London Borough of Richmond Upon Thames

Council tax band: E

Location

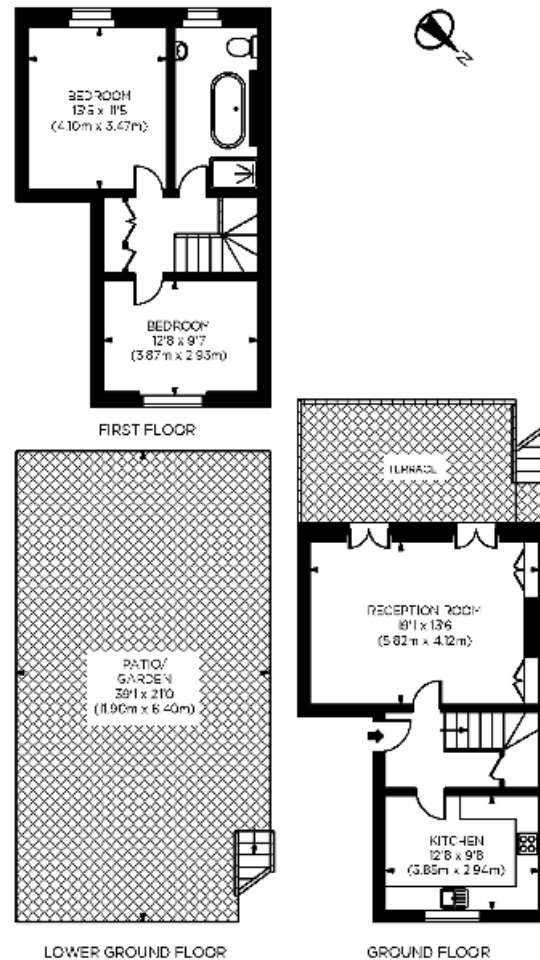
Petersham Road runs parallel to the River Thames and is located within a short distance of the local shops and amenities of Richmond Hill. The wonderful green open spaces of Richmond Park, Petersham Meadows, Richmond Green and Terrace Gardens are all within close proximity.

Local transport links include numerous bus routes to surrounding areas. Frequent trains travel to Central London via South West Trains and the London Underground District Line from Richmond station. Transport links into Central London are provided at Richmond station with mainline services to Waterloo (19 minutes) and underground services (District Line). Heathrow airport is located 7.1 miles from the cottage.

*All timings and distances are approximate.



This plan is for guidance only and must not be relied upon as a statement of fact. Attention is drawn to the important notice on the last page of the text of the Particulars.



Petersham Road, TW10
 Gross Internal Area 949 sq ft/88 sq metres
 ©photosandfloorplans.com

Knight Frank
 Richmond
 23 Hill Street,
 London
 TW9 1SX

We would be delighted to tell you more
Jordanna Mancina
 020 8939 2805
 jordanna.mancina@knightfrank.com

[knightfrank.co.uk](https://www.knightfrank.co.uk)



Fixtures and fittings: A list of the fitted carpets, curtains, light fittings and other items fixed to the property which are included in the sale (or may be available by separate negotiation) will be provided by the Seller's Solicitors.

Important Notice: 1. Particulars: These particulars are not an offer or contract, nor part of one. You should not rely on statements by Knight Frank LLP in the particulars or by word of mouth or in writing ("information") as being factually accurate about the property, its condition or its value. Neither Knight Frank LLP nor any joint agent has any authority to make any representations about the property, and accordingly any information given is entirely without responsibility on the part of the agents, seller(s) or lessor(s). 2. Photos, Videos etc: The photographs, property videos and virtual viewings etc. show only certain parts of the property as they appeared at the time they were taken. Areas, measurements and distances given are approximate only. 3. Regulations etc: Any reference to alterations to, or use of, any part of the property does not mean that any necessary planning, building regulations or other consent has been obtained. A buyer or lessee must find out by inspection or in other ways that these matters have been properly dealt with and that all information is correct. 4. VAT: The VAT position relating to the property may change without notice. 5. To find out how we process Personal Data, please refer to our Group Privacy Statement and other notices at <https://www.knightfrank.com/legals/privacy-statement>.

Particulars dated September 2022. Photographs and videos dated September 2020.

Knight Frank is the trading name of Knight Frank LLP. Knight Frank LLP is a limited liability partnership registered in England and Wales with registered number OC305934. Our registered office is at 55 Baker Street, London W1U 8AN where you may look at a list of members' names. If we use the term 'partner' when referring to one of our representatives, that person will either be a member, employee, worker or consultant of Knight Frank LLP and not a partner in a partnership. If you do not want us to contact you further about our services then please contact us by either calling 020 3544 0692, email to marketing.help@knightfrank.com or post to our UK Residential Marketing Manager at our registered office (above) providing your name and address.