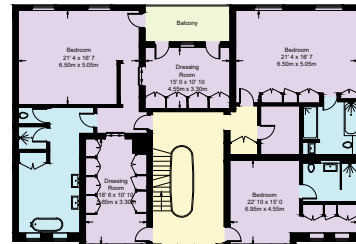
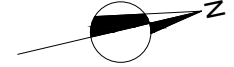


Roehampton Gate, Roehampton, London

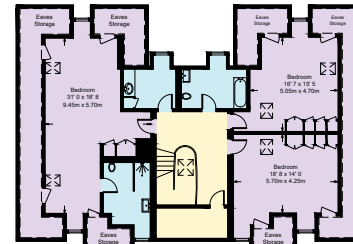
Approximate Gross Internal Area = 9634 sq ft / 894.9 sq m
(Excluding Reduced Headroom / Eaves Storage)

Reduced Headroom / Eaves Storage = 500 sq ft / 46.5 sq m

Total = 10134 sq ft / 941.4 sq m

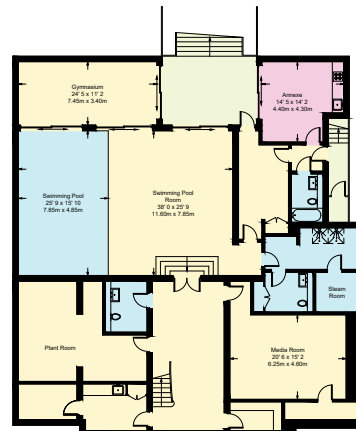


First Floor
2280 sq ft / 209 sq m

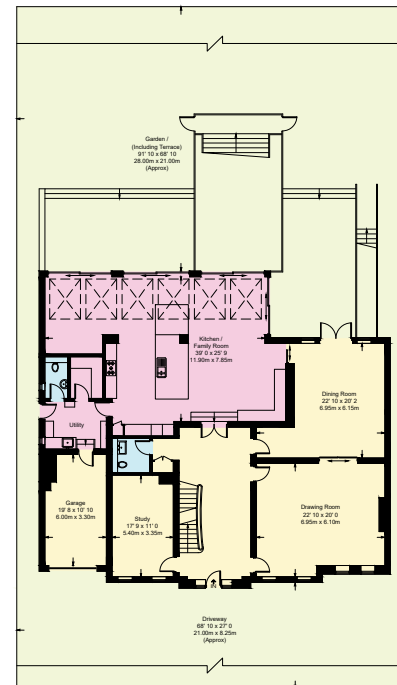


Second Floor
1638 sq ft / 152.7 sq m
(including Reduced Headroom / Eaves Storage)

□ = Reduced headroom below 1.5m / 5'0"



Lower Ground Floor
3462 sq ft / 321.6 sq m



Ground Floor
2888 sq ft / 268.1 sq m
(including Garage)

This plan is not to scale and must be used as layout guidance only. All measurements and areas are approximate and should not be relied upon to provide accurate information. This plan must not be relied upon when making property valuations, design considerations or any other such relevant decisions. We accept no responsibility or liability (whether in contract, tort or otherwise) in relation to any loss whatsoever arising from or in connection with any use of this plan or the adequacy, accuracy or completeness of it or any information within it.