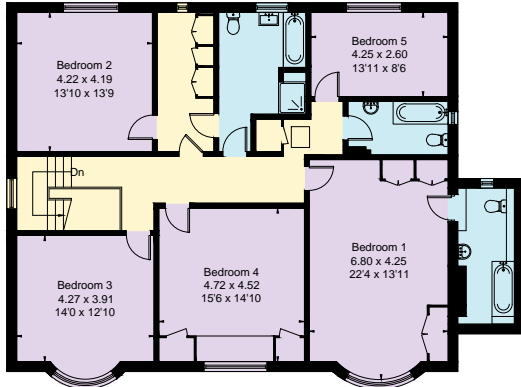
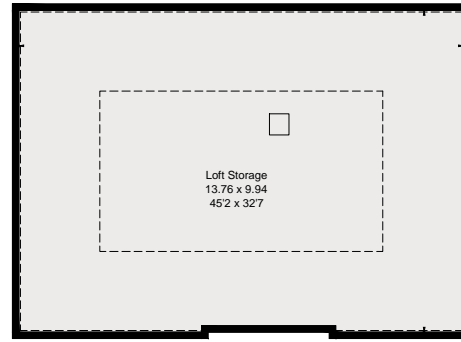


PRIORY LANE LONDON SW15 5JL

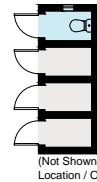
Approximate Floor Area = 314.7 sq m / 3387 sq ft
 Loft Storage = 136 sq m / 1464 sq ft
 Outbuilding = 26.9 sq m / 289 sq ft
 Total = 477.6 sq m / 5140 sq ft



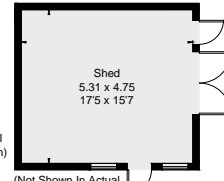
First Floor



(Not Shown In Actual Location / Orientation) Reduced head height below 1.5m



(Not Shown In Actual Location / Orientation)



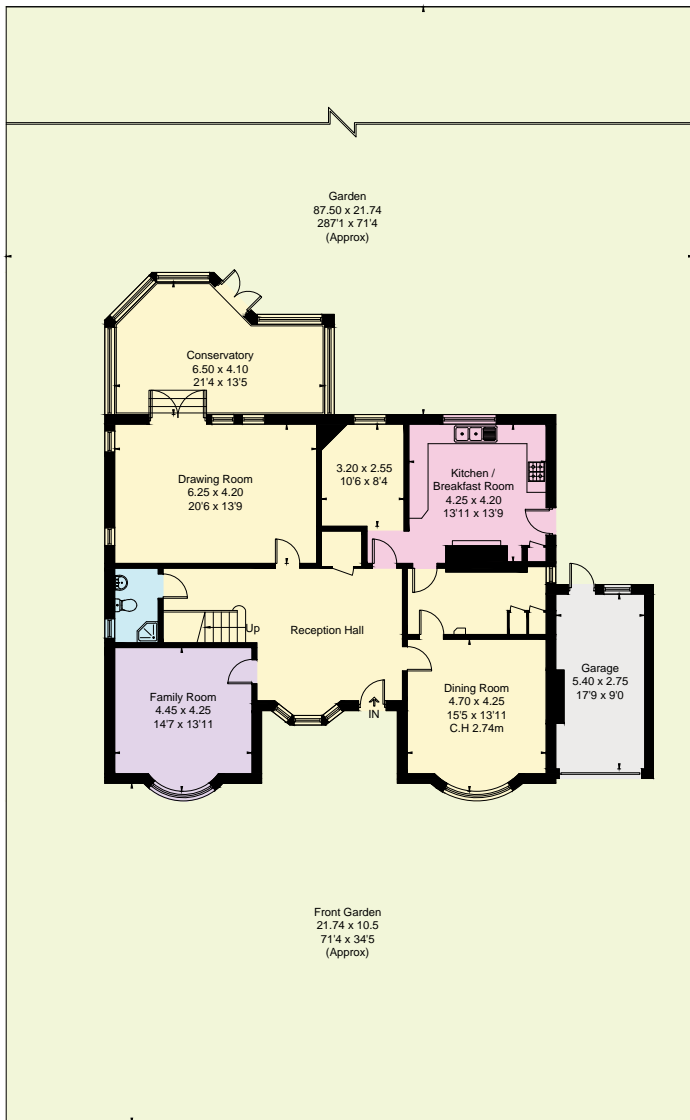
(Not Shown In Actual Location / Orientation)



(Not Shown In Actual Location / Orientation)



(Not Shown In Actual Location / Orientation)



Ground Floor



This floor plan has been drawn in accordance with RICS Property Measurement 2nd edition.

All measurements, including the floor area, are approximate and for illustrative purposes only. @fourwalls-group.com #85995