



Amoula House, Kingston upon Thames **KT2**





Stunning
award
winning
house for sale
in Coombe



Amoula House, Coombe Hill **KT2**

A truly stunning and beautifully built seven bedroom detached house that has been finished to the highest standards, including a Bulthaup kitchen, underfloor heating, indoor pool, Lutron lighting and Sound system. There is ample off street parking behind electric gates. There is a private road levy charge currently set at £580 per year.

Please note that the photos were taken before the last tenancy.



Guide price: £4,950,000

Tenure: Freehold

Local authority: London Borough of Kingston upon Thames

Council tax band: H





Location

Coombe Hill Road is well located close to Kingston, Wimbledon, Richmond Park and central London via the A3. The area offers a wide range of sporting activities including seven golf courses between Coombe and Wimbledon and has great schooling nearby.

Description

This superb house, by Q Developments, won Best Luxury House and Best Exterior Design at the What House 2012 awards and has been designed to maximize light and space with an abundance of glass and clever use of a large patio at the lower ground floor level with steps to the garden. There is an integrated sound system in the principal rooms.

The ground floor comprises an entrance hall, reception, family room, kitchen, dining room, cloakroom, two staff bedrooms and bathrooms with separate entrances and a secondary kitchen. This floor has a wonderful flow due to its open plan nature and has direct access on to the landscaped terrace and gardens.

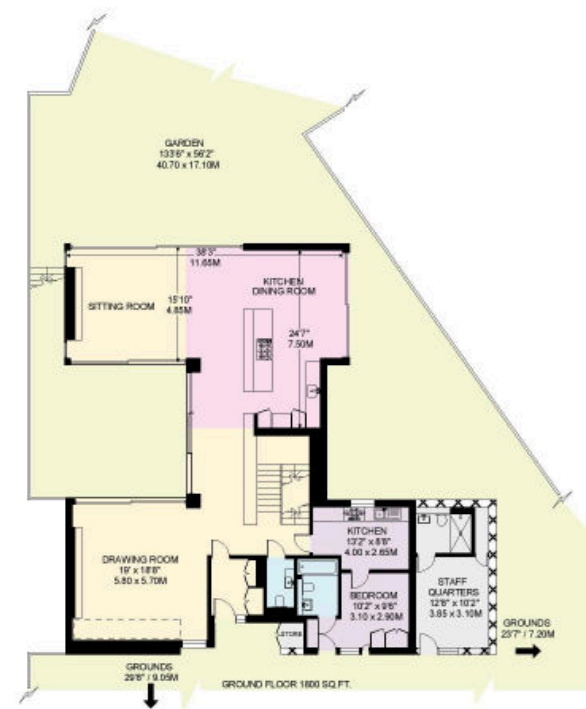
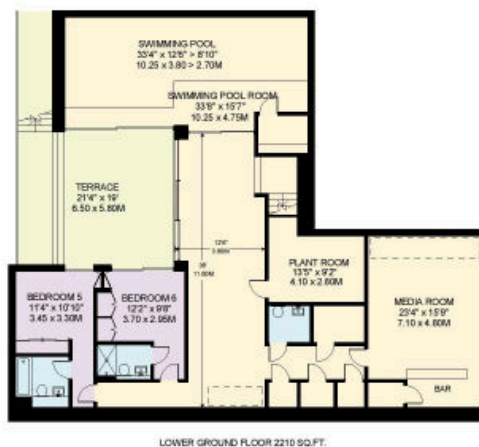
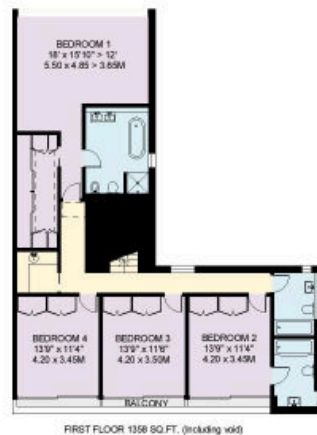
On the lower ground floor is the indoor pool with access to the patio, a sauna, a media room, a cloakroom, gym and two bedrooms and en suite bathrooms. On the first floor are an exceptional principal bedroom suite complete with a fully fitted dressing room, three further bedrooms and two further bathrooms (one en suite).



AMOULA HOUSE
 KINGSTON-UPON-THAMES
 APPROXIMATE INTERNAL FLOOR AREA
 5368 SQ.FT / 498.7 SQ.M. (including void)
 PLUS GARAGE AND STORES: 550 SQ.FT. / 50.9 SQ.M.
 PLUS TERRACE, POOL PLANT ROOMS: 196 SQ.FT. / 18.1 SQ.M. (if relevant)
 TOTAL AREAS SHOWN ON PLAN 5781 SQ.FT. / 537.1 SQ.M.



This plan is for guidance only and must not be relied upon as a statement of fact. Attention is drawn to the important notice on the last page of the text of the Particulars.



Knight Frank
 Wimbledon
 58 High Street
 Wimbledon
 SW19 5EE
knightfrank.co.uk

We would be delighted to tell you more
 Alex Philo
 020 3823 9250
alex.philo@knightfrank.com



Fixtures and fittings: A list of the fitted carpets, curtains, light fittings and other items fixed to the property which are included in the sale (or may be available by separate negotiation) will be provided by the Seller's Solicitors.
 Important Notice: 1. Particulars: These particulars are not an offer or contract, nor part of one. You should not rely on statements by Knight Frank LLP in the particulars or by word of mouth or in writing ("information") as being factually accurate about the property, its condition or its value. Neither Knight Frank LLP nor any joint agent has any authority to make any representations about the property, and accordingly any information given is entirely without responsibility on the part of the agents, seller(s) or lessor(s). 2. Photos, Videos etc: The photographs, property videos and virtual viewings etc. show only certain parts of the property as they appeared at the time they were taken. Areas, measurements and distances given are approximate only. 3. Regulations etc: Any reference to alterations to, or use of, any part of the property does not mean that any necessary planning, building regulations or other consent has been obtained. A buyer or lessee must find out by inspection or in other ways that these matters have been properly dealt with and that all information is correct. 4. VAT: The VAT position relating to the property may change without notice. 5. To find out how we process Personal Data, please refer to our Group Privacy Statement and other notices at <https://www.knightfrank.com/legals/privacy-statement>.
 Particulars dated April 2023. Photographs and videos dated April 2023.
 All information is correct at the time of going to print. Knight Frank is the trading name of Knight Frank LLP. Knight Frank LLP is a limited liability partnership registered in England and Wales with registered number OC305934. Our registered office is at 55 Baker Street, London W1U 8AN. We use the term 'partner' to refer to a member of Knight Frank LLP or an employee or consultant. A list of members names of Knight Frank LLP may be inspected at our registered office. If you do not want us to contact you further about our services then please contact us by either calling 020 3544 0692, email to marketing.help@knightfrank.com or post to our UK Residential Marketing Manager at our registered office (above) providing your name and address.