

The Vicarage, TW10.



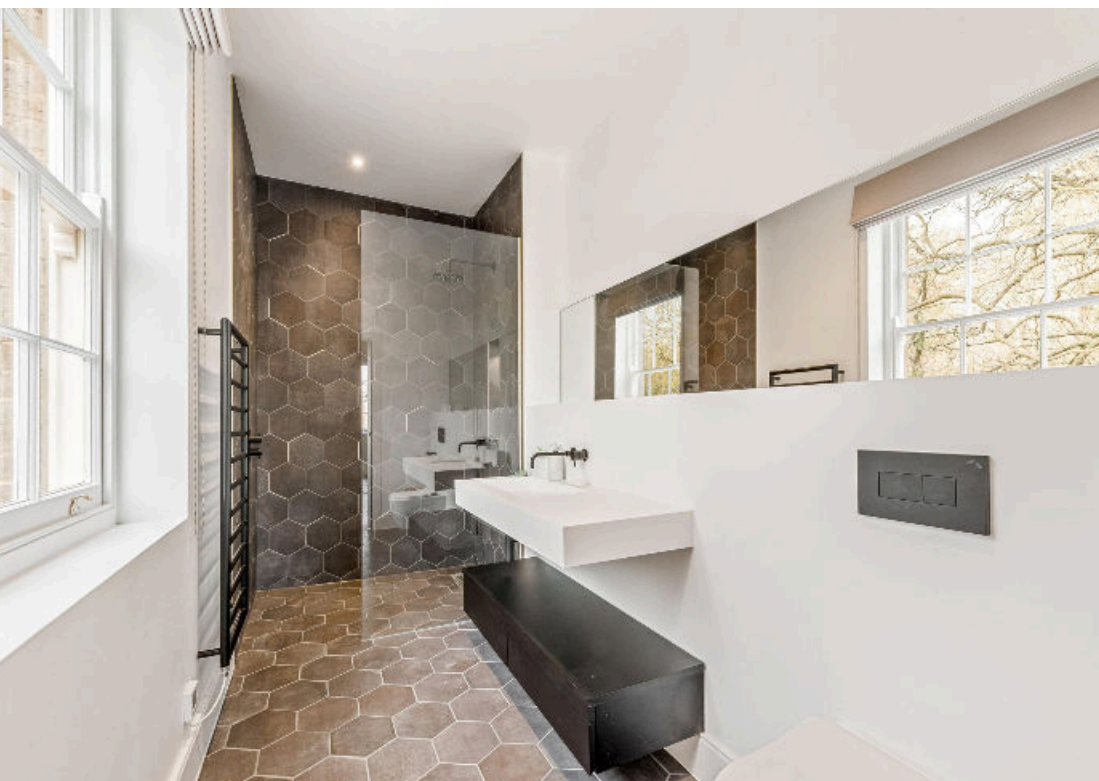


A beautifully finished house in Ham, Richmond.



Available to let is this incredible detached house which has been finished to an extremely high standard throughout with a contemporary yet classic finish. Floor to ceiling windows flood the property with an abundance of natural light and the property is complimented by picturesque views of the secluded garden.





Guide price
£15,000 per calendar month



This newly renovated Georgian House offers an open plan and spacious living across three floors. The ground floor consists of an open plan kitchen and dining area with two reception rooms and a separate WC. On the first floor, there are two well proportioned bedrooms, each featuring an en-suite, with the principal bedroom also featuring an impressive walk-in-wardrobe.

The remaining three bedrooms are situated on the second floor, one of which includes an en-suite. This level also holds a separate WC.

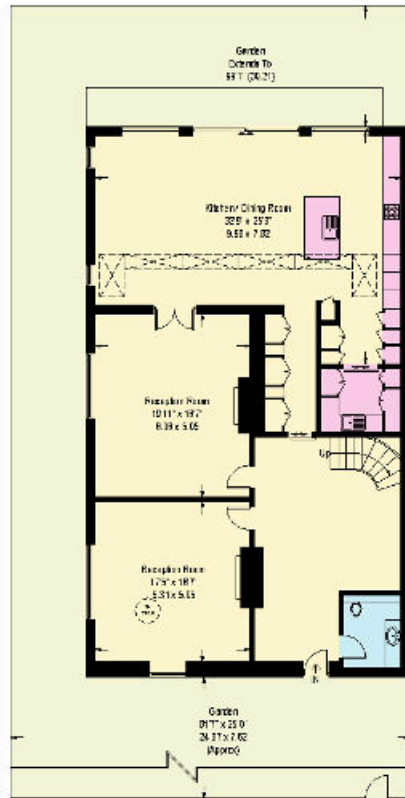


Located in Ham, within 2 miles of Richmond, the house is close to the eateries, bars and restaurants of Richmond Town and Ham parade. Transport links from Richmond include the District Underground, overland line to Stratford and speedy services (19 minutes) to London Waterloo. The property also offers easy access to the local schools including the German School.

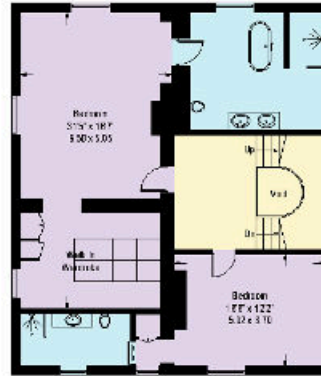


Church Road, Ham, TW10

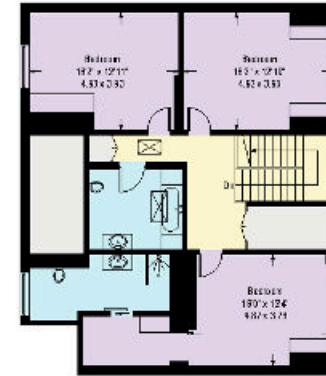
Approximate Gross Internal Area = 4337 sq ft / 402.9 sq m
(Excluding Void)



Ground Floor



First Floor



Second Floor

Illustration for identification purposes only.
measurements are approximate, not to scale. (IDB18788)

Knight Frank

23 Hill St
Richmond
TW9 1SX

knightfrank.co.uk

We would be delighted to tell you more.

Hannah Beck
020 8939 2811
hannah.beck@knightfrank.com

Chloe Andrews
020 8939 2812
chloe.andrews@knightfrank.com



Your partners in property for 125 years

Fixtures and fittings: Carpets, curtains, light fittings and other items fixed to the property (and not fixed to the property) belonging to the landlord are included in any tenancy as evidenced in the inventory, unless specifically noted otherwise. All those items regarded as tenant's fixtures and fittings, are specifically excluded from any tenancy and will not be evidenced in the inventory. Important Notice: 1. Particulars: These particulars are not an offer or contract, nor part of one. You should not rely on statements by Knight Frank LLP in the particulars or by word of mouth or in writing ("information") as being factually accurate about the property, its condition or its value. Neither Knight Frank LLP nor any joint agent has any authority to make any representations about the property, and accordingly any information given is entirely without responsibility on the part of the agents, seller(s) or lessor(s). 2. Photos, Videos etc: The photographs, property videos and virtual viewings etc. show only certain parts of the property as they appeared at the time they were taken. Areas, measurements and distances given are approximate only. 3. Regulations etc: Any reference to alterations to, or use of, any part of the property does not mean that any necessary planning, building regulations or other consent has been obtained. A buyer or lessee must find out by inspection or in other ways that these matters have been properly dealt with and that all information is correct. 4. VAT: The VAT position relating to the property may change without notice. 5. To find out how we process Personal Data, please refer to our Group Privacy Statement and other notices at <https://www.knightfrank.com/legals/privacy-statement>.

Particulars dated [14.12.2021]. Photographs and videos dated [09.12.2021].

Knight Frank is the trading name of Knight Frank LLP. Knight Frank LLP is a limited liability partnership registered in England and Wales with registered number OC305934. Our registered office is at 55 Baker Street, London W1U 8AN where you may look at a list of members' names. If we use the term 'partner' when referring to one of our representatives, that person will either be a member, employee, worker or consultant of Knight Frank LLP and not a partner in a partnership. If you do not want us to contact you further about our services then please contact us by either calling 020 3544 0692, email to marketing.help@knightfrank.com or post to our UK Residential Marketing Manager at our registered office (above) providing your name and address.