



Tonbridge Road, Shipbourne, Tonbridge





Hill Hoad Cottages, Tonbridge Road, Shipbourne, Tonbridge

A charming Grade II listed five bedroom semi-detached family home nestled in the idyllic and highly desirable village of Shipbourne.



Tenure: Freehold

Local authority: Tonbridge and Malling Borough Council

Council tax band: F





London
MAR 30
THU







The Property

The cottage is a rare gem that offers the best of both worlds. The allure of history and the convenience of modern living. With its captivating views, spacious interiors, and delightful outdoor spaces, this property is truly a haven for those seeking a timeless and harmonious lifestyle. Whether you're looking for a weekend getaway or a permanent residence, this cottage in the heart of Shipbourne promises an enchanting and unforgettable experience.

The heart of the home lies in the triple-aspect kitchen, dining, and family room. With its ample natural light and enchanting views, this space becomes a delightful hub for everyday living and entertaining. The kitchen has been recently updated and is equipped with modern amenities while retaining a traditional charm that complements the cottage's overall ambiance.

The sitting room offers a warm and cosy space, featuring a striking inglenook fireplace and log burner that adds a touch of character. It's the perfect spot to relax with a book on a chilly evening or to gather with friends and family around a crackling fire.

The addition of the recently converted barns which have been well adjoined, elevates the original part of the house and benefits from two generously sized double bedrooms overlooking the fields beyond. A library/games room, study, utility room, and access to the workshop/double garage providing versatile spaces for work, leisure and further accommodation.

Upstairs, you'll discover three well-appointed bedrooms and a family bathroom. Each bedroom offers a unique blend of historical charm and contemporary comfort, including vaulted ceilings and exposed beams, providing a restful sanctuary for all. The bathroom has been tastefully designed to meet modern expectations while still honouring the cottage's heritage.





EVERY
ONE
SHOULD
HAVE
A DOG





A gated driveway leads to a double car barn garage, ensuring secure storage for vehicles. The front and rear gardens are meticulously landscaped, creating an enchanting outdoor retreat that complements the cottage's rural setting.







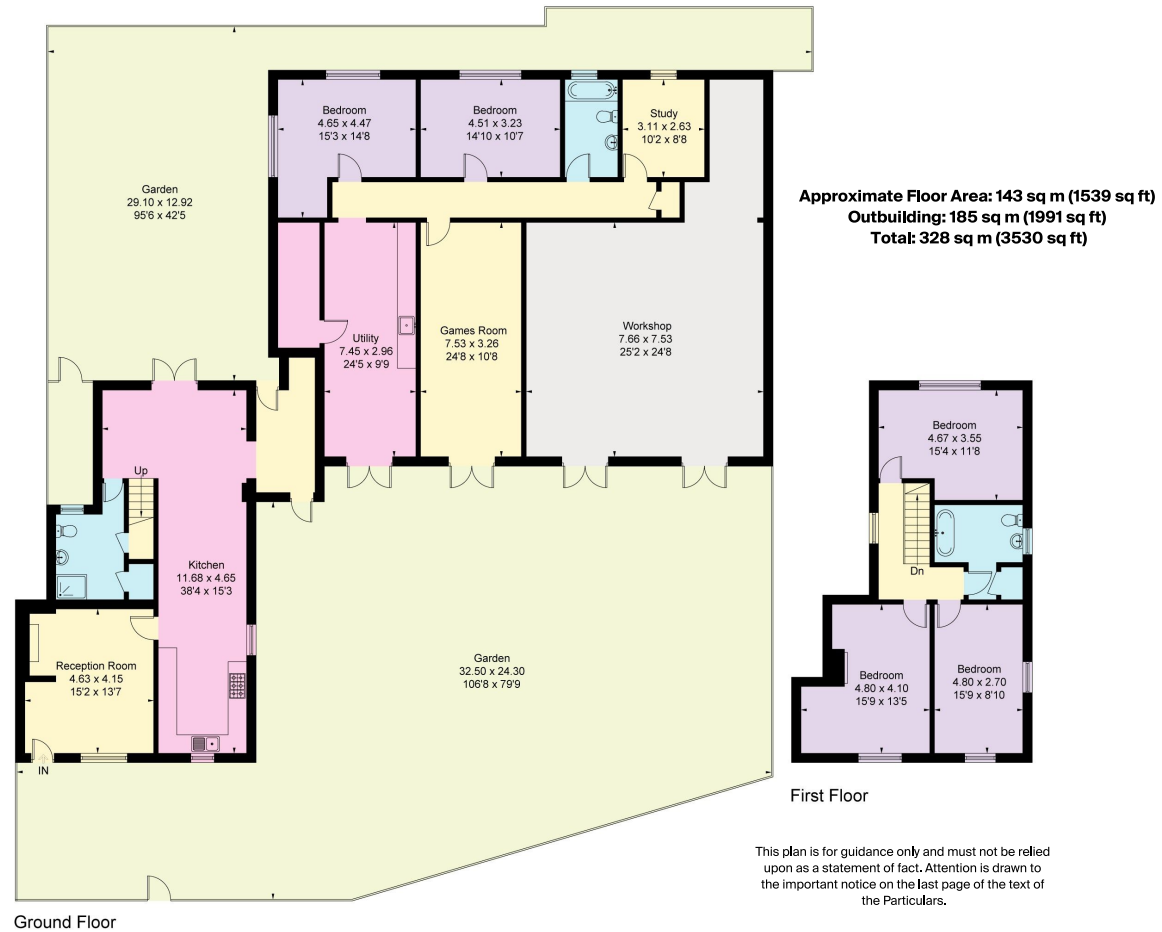
Location

Shipbourne is a picturesque village in an area of outstanding natural beauty between Sevenoaks and Tonbridge and offers a large green, the popular Chaser pub/restaurant, primary school, church, farmers market and Greensands Way. Plaxtol village stores/post office is approximately 2 miles away.

Borough Green mainline station (with services to London Bridge and Maidstone) is approximately 4.4 miles away. Hildenborough main line station with services to London Bridge/Cannon Street/Charing Cross is approximately 4 miles away.

The towns of Sevenoaks and Tonbridge both offer a comprehensive range of educational, recreational and shopping facilities, together with a mainline station with services to London Bridge/Cannon Street/Charing Cross. Tonbridge is approximately 3.5 miles away and Sevenoaks is approximately 6.5 miles away.





Drawn for illustration and identification purposes only by fourwalls-group.com 322211

Knight Frank
Sevenoaks
 113-117 High Street
 Sevenoaks
 TN13 1UP
knightfrank.co.uk

I would be delighted to tell you more
Oliver Streeter
 01732 744476
oliver.streeter@knightfrank.com



Fixtures and fittings: A list of the fitted carpets, curtains, light fittings and other items fixed to the property which are included in the sale (or may be available by separate negotiation) will be provided by the Seller's Solicitors.

Important Notice: 1. Particulars: These particulars are not an offer or contract, nor part of one. You should not rely on statements by Knight Frank LLP in the particulars or by word of mouth or in writing ("information") as being factually accurate about the property, its condition or its value. Neither Knight Frank LLP nor any joint agent has any authority to make any representations about the property, and accordingly any information given is entirely without responsibility on the part of the agents, seller(s) or lessor(s). 2. Photos, Videos etc: The photographs, property videos and virtual viewings etc. show only certain parts of the property as they appeared at the time they were taken. Areas, measurements and distances given are approximate only. 3. Regulations etc: Any reference to alterations to, or use of, any part of the property does not mean that any necessary planning, building regulations or other consent has been obtained. A buyer or lessee must find out by inspection or in other ways that these matters have been properly dealt with and that all information is correct. 4. VAT: The VAT position relating to the property may change without notice. 5. To find out how we process Personal Data, please refer to our Group Privacy Statement and other notices at <https://www.knightfrank.com/legals/privacy-statement>. Particulars dated October 2023. Photographs and videos dated July 2023.

Knight Frank is the trading name of Knight Frank LLP. Knight Frank LLP is a limited liability partnership registered in England and Wales with registered number OC305934. Our registered office is at 55 Baker Street, London W1U 8AN where you may look at a list of members' names. If we use the term 'partner' when referring to one of our representatives, that person will either be a member, employee, worker or consultant of Knight Frank LLP and not a partner in a partnership. If you do not want us to contact you further about our services then please contact us by either calling 020 3544 0692, email to marketing.help@knightfrank.com or post to our UK Residential Marketing Manager at our registered office (above) providing your name and address.

