



# CAMELLIA HOUSE

Shoreham Lane, Sevenoaks



# CAMELLIA HOUSE SHOREHAM LANE, SEVENOAKS

An impressive detached family property located within close proximity of Sevenoaks mainline station, High Street and many well-regarded schools.

			EPC
5	4	4	C
			

Local Authority: Sevenoaks District Council  
Council Tax band: G  
Tenure: Freehold



## THE PROPERTY

The property was completed in 2018 to an extremely high standard and provides spacious and well-balanced accommodation arranged over three floors, extending to over 3,800 sq ft. On the ground floor the property combines open-plan living spaces with more formal entertaining areas ideal for modern family living. Of particular note is the superb kitchen family / dining area with floor-to-ceiling sliding doors opening on to a fabulous garden terrace creating a wonderful sense of inside / outside living..

On the first floor are two double bedrooms with en suite shower rooms. In addition there are two further double bedrooms served by a well-appointed family bathroom. On the second floor is a superb bedroom suite which encompasses the entire floor benefitting from an impressive bathroom with freestanding bath and shower cubicle. There is also a built-in wardrobe and chest of drawers with bench seat above.







## GARDENS AND GROUNDS SITUATION

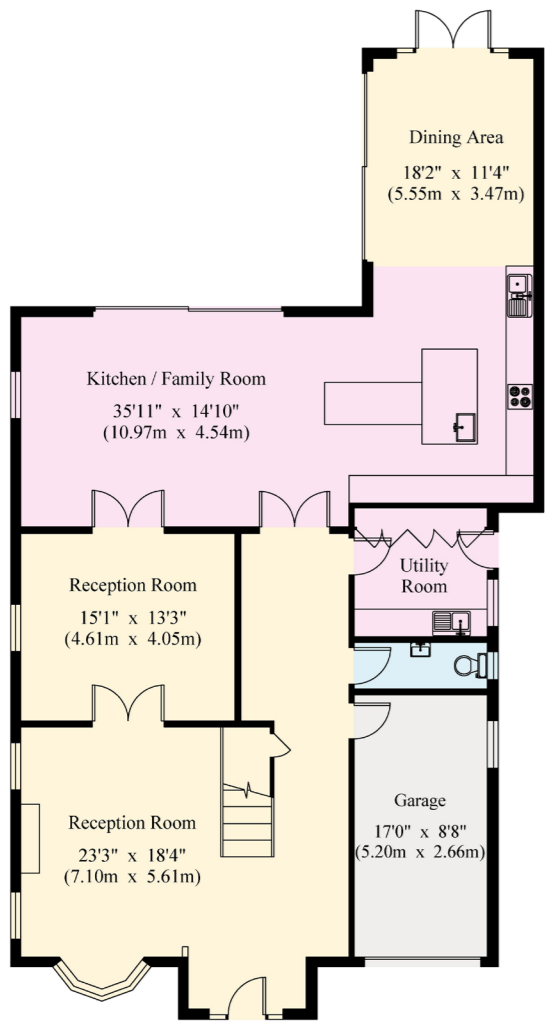
Externally the property is set back from the road and approached via a block-paved drive. There is parking for several cars along with an integral garage. To the rear of the property is a delightful landscaped garden, principally laid to lawn with a stone paved terrace and feature oak frame pergola with trailing wisteria creating an attractive focal point. There is also a garden room, ideal for a home office or gym.

The property is situated in a sought-after and convenient location 0.6 miles from Sevenoaks station with its mainline links to London Bridge, Waterloo East and London Charing Cross.

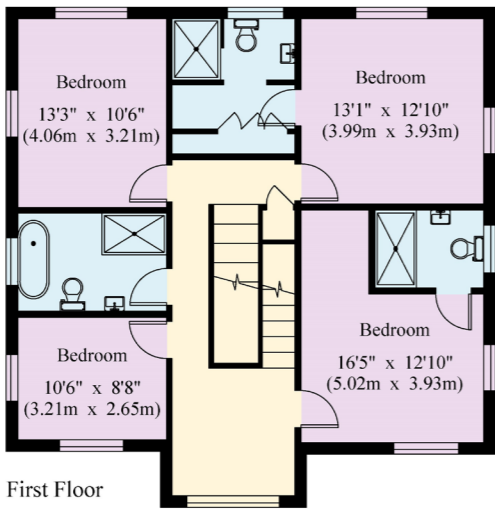
The property enjoys access to a wide range of nearby state schools, including Riverhead Infants' School, Amherst Primary School, St. Thomas' Catholic Primary School, Lady Boswell's C of E VA Primary School (rated Outstanding by Ofsted) and Knole Academy, together with a good selection of renowned independent schools including The Granville, Walthamstow Hall, The New Beacon, Radnor House, Sevenoaks, Solefields, Sevenoaks Prep and Tonbridge.

The property enjoys access to a wide range of nearby state and independent schools. Sevenoaks provides a comprehensive selection of bars, restaurants, supermarkets. The area offers a wide choice of social and recreational activities.

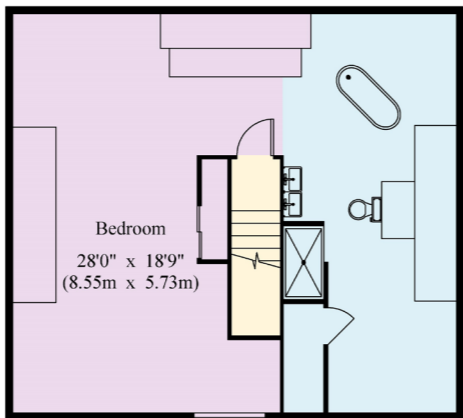




Ground Floor



First Floor



Second Floor



James Storey  
01732 744475  
james.storey@knightfrank.com

**Knight Frank Sevenoaks**  
113-117 High Street  
Sevenoaks, Kent, TN13 1UP

[knightfrank.co.uk](https://www.knightfrank.co.uk)

Your partners in property

House - Approximate Gross Internal Area = 340.5 sq m / 3665 sq ft (including Garage)  
Garden office - 13.8 sq m / 148 sq ft

This plan is for layout guidance only. Not drawn to scale unless stated. Windows and door openings are approximate. Whilst every care is taken in the preparation of this plan, please check all dimensions, shapes and compass bearings before making any decisions reliant upon them. (ID767266)

1. Particulars: These particulars are not an offer or contract, nor part of one. You should not rely on statements given by Knight Frank in the particulars, by word of mouth or in writing ("information") as being factually accurate about the property, its condition or its value. Neither Knight Frank nor any joint agent has any authority to make any representations about the property, and accordingly any information given is entirely without responsibility on the part of Knight Frank. 2. Material Information: Please note that the material information is provided to Knight Frank by third parties and is provided here as a guide only. While Knight Frank has taken steps to verify this information, we advise you to confirm the details of any such material information prior to any offer being submitted. If we are informed of changes to this information by the seller or another third party, we will use reasonable endeavours to update this as soon as practical. 3. Photos, Videos etc: The photographs, property videos and virtual viewings etc. show only certain parts of the property as they appeared at the time they were taken. Areas, measurements and distances given are approximate only. 4. Regulations etc: Any reference to alterations to, or use of, any part of the property does not mean that any necessary planning, building regulations or other consent has been obtained. A buyer must find out by inspection or in other ways that these matters have been properly dealt with and that all information is correct. 5. Fixtures and fittings: A list of the fitted carpets, curtains, light fittings and other items fixed to the property which are included in the sale (or may be available by separate negotiation) will be provided by the Seller's Solicitors. 6. VAT: The VAT position relating to the property may change without notice. 7. To find out how we process Personal Data, please refer to our Group Privacy Statement and other notices at <https://www.knightfrank.com/legals/privacy-statement>.

Particulars dated November 2025. Photographs and videos dated 2018.. All information is correct at the time of going to print. Knight Frank is the trading name of Knight Frank LLP. Knight Frank LLP is a limited liability partnership registered in England and Wales with registered number OC305934. Our registered office is at 55 Baker Street, London W1U 8AN. We use the term 'partner' to refer to a member of Knight Frank LLP or an employee or consultant. A list of members names of Knight Frank LLP may be inspected at our registered office. If you do not want us to contact you further about our services then please contact us by either calling 020 3544 0692, email to [marketing.help@knightfrank.com](mailto:marketing.help@knightfrank.com) or post to our UK Residential Marketing Manager at our registered office (above) providing your name and address.

