

West Swilletts Cottage, Seaborough, Dorset



A renovated and extended Victorian cottage with lovely countryside views in a private peaceful settings.

Location

West Swillets Cottage is situated off a narrow country lane amidst beautiful, open countryside about half a mile from the hamlet of Seaborough. The nearby village of Drimpton has a parish church, village hall and a popular pub (The Royal Oak Trip Advisor rated 4.5). Most day to day needs can be found in the local market towns of Crewkerne and Beaminster and the former also has a train station with regular, direct services to Waterloo. The area also has good access to several major roads including the A30 and A356 and offers a wide choice of excellent schools from both the state and independent sectors.

Distances - Seaborough 0.5 mile, Drimpton 1 mile, Broadwindsor 2.5 miles, A3066 2.5 miles, Misterton/A356 3 miles, Crewkerne/A30 3 miles (Waterloo 2.5 hours), Beaminster 4.5 miles, West Bay/Jurassic Coast 11.5 miles, Lyme Regis 14 miles. (Distances and time approximate)

West Swillets Cottage

Originally a Victorian farm labourer's cottage, West Swillets Cottage has a truly perfect position amidst peaceful, unspoilt countryside. It has been newly renovated and extended, creating a highly energy efficient family home that perfectly blends period character with contemporary design and functionality. With wonderful views of the surrounding countryside, the cottage incorporates a combined, well-equipped kitchen/family room fitted with a wood-burning stove and sliding windows to the garden plus two further reception rooms, one with a wood-burning stove and additional door to garden. On the first floor are four double bedrooms and three bath/shower rooms, two of which are ensuite.



Outside

The cottage sits within an enclosed, private garden with a terrace, plenty of parking and a double carport.

Property Information

Tenure: Freehold.

Services: Mains water & electricity. Private drainage. Underfloor heating throughout via air source heat pump. Ultrafast broadband connection available close by.

Local Authority & Council Tax Band: Dorset Council (www.dorsetcouncil.gov.uk). Tax Band: C

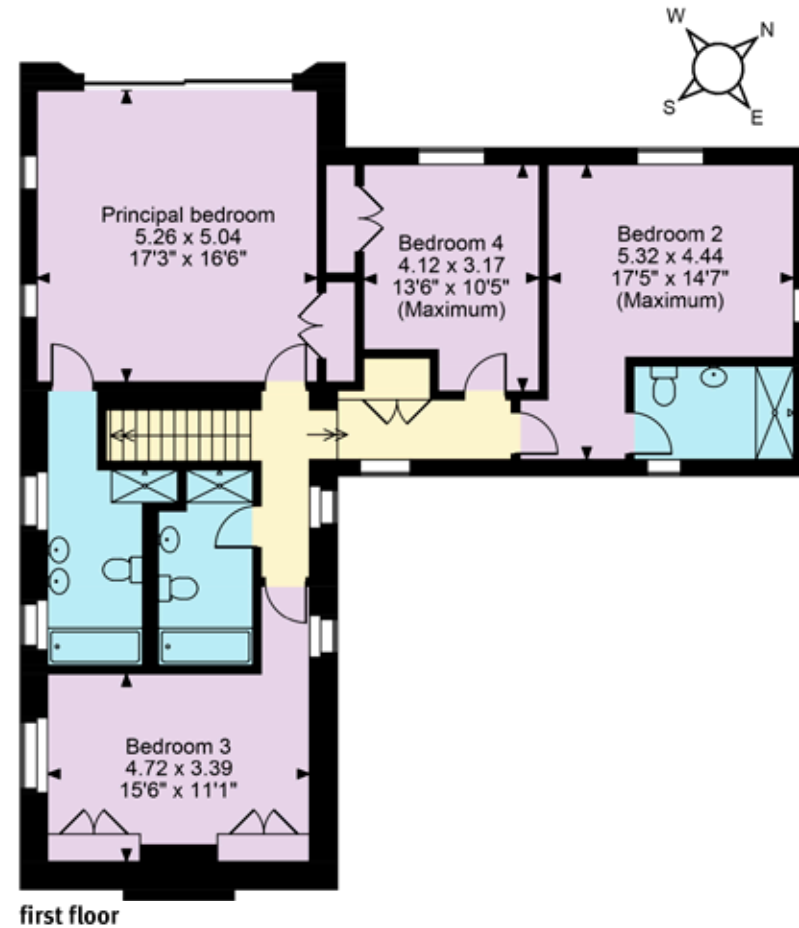
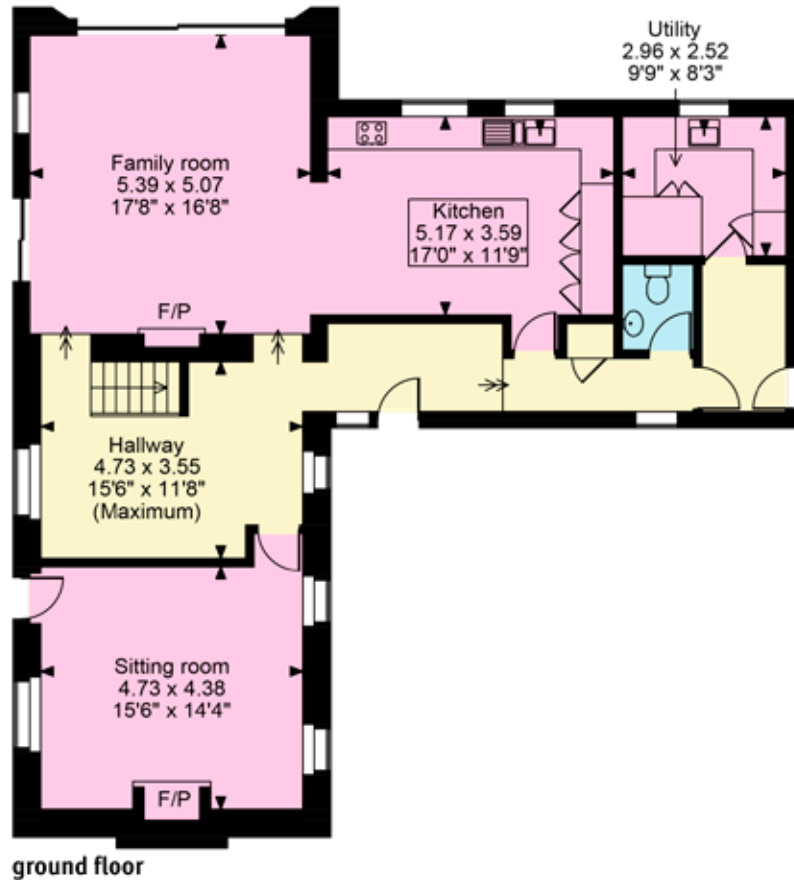
Directions (Postcode DT8 3QZ)

What3Words: braching.depravity.expand

The best route is through Crewkerne on the A356 Dorchester road, past the Railway Station, Globe Pub and take the next right onto single track. Keep straight on for about 2 miles into Seaborough, past the church and turn left, over the River Axe and take the next right signpost Drimpton. West Swillets Cottage is on the right after approx. 200 yards.

Approximate Gross Internal Floor Area

226 sq.m / 2,435 sq.ft



This plan is for guidance only and must not be relied upon as a statement of fact. Attention is drawn to the important notice on the last page of the text of the Particulars.

Knight Frank

First Floor, 5 Hound Street

Sherborne

DT9 3AB

knightfrank.co.uk

Please call for further information.

Simon Barker

01935 810064

simon.barker@knightfrank.com



Fixtures and fittings: A list of the fitted carpets, curtains, light fittings and other items fixed to the property which are included in the sale (or may be available by separate negotiation) will be provided by the Seller's Solicitors.

Important Notice: 1. Particulars: These particulars are not an offer or contract, nor part of one. You should not rely on statements by Knight Frank LLP in the particulars or by word of mouth or in writing ("information") as being factually accurate about the property, its condition or its value.

Neither Knight Frank LLP nor any joint agent has any authority to make any representations about the property, and accordingly any information given is entirely without responsibility on the part of the agents, seller(s) or lessor(s). 2. Photos, Videos etc: The photographs, property videos and virtual viewings etc. show only certain parts of the property as they appeared at the time they were taken. Areas, measurements and distances given are approximate only. 3. Regulations etc: Any reference to alterations to, or use of, any part of the property does not mean that any necessary planning, building regulations or other consent has been obtained. A buyer or lessee must find out by inspection or in other ways that these matters have been properly dealt with and that all information is correct. 4. VAT: The VAT position relating to the property may change without notice. 5. To find out how we process Personal Data, please refer to our Group Privacy Statement and other notices at <https://www.knightfrank.com/legals/privacy-statement>.

Particulars dated September 2024. Photographs and videos dated July 2024.

All information is correct at the time of going to print. Knight Frank is the trading name of Knight Frank LLP. Knight Frank LLP is a limited liability partnership registered in England and Wales with registered number OC305934. Our registered office is at 55 Baker Street, London W1U 8AN.

We use the term 'partner' to refer to a member of Knight Frank LLP, or an employee or consultant. A list of members names of Knight Frank LLP may be inspected at our registered office. If you do not want us to contact you further about our services then please contact us by either calling 020 3544 0692, email to marketing.help@knightfrank.com or post to our UK Residential Marketing Manager at our registered office (above) providing your name and address.