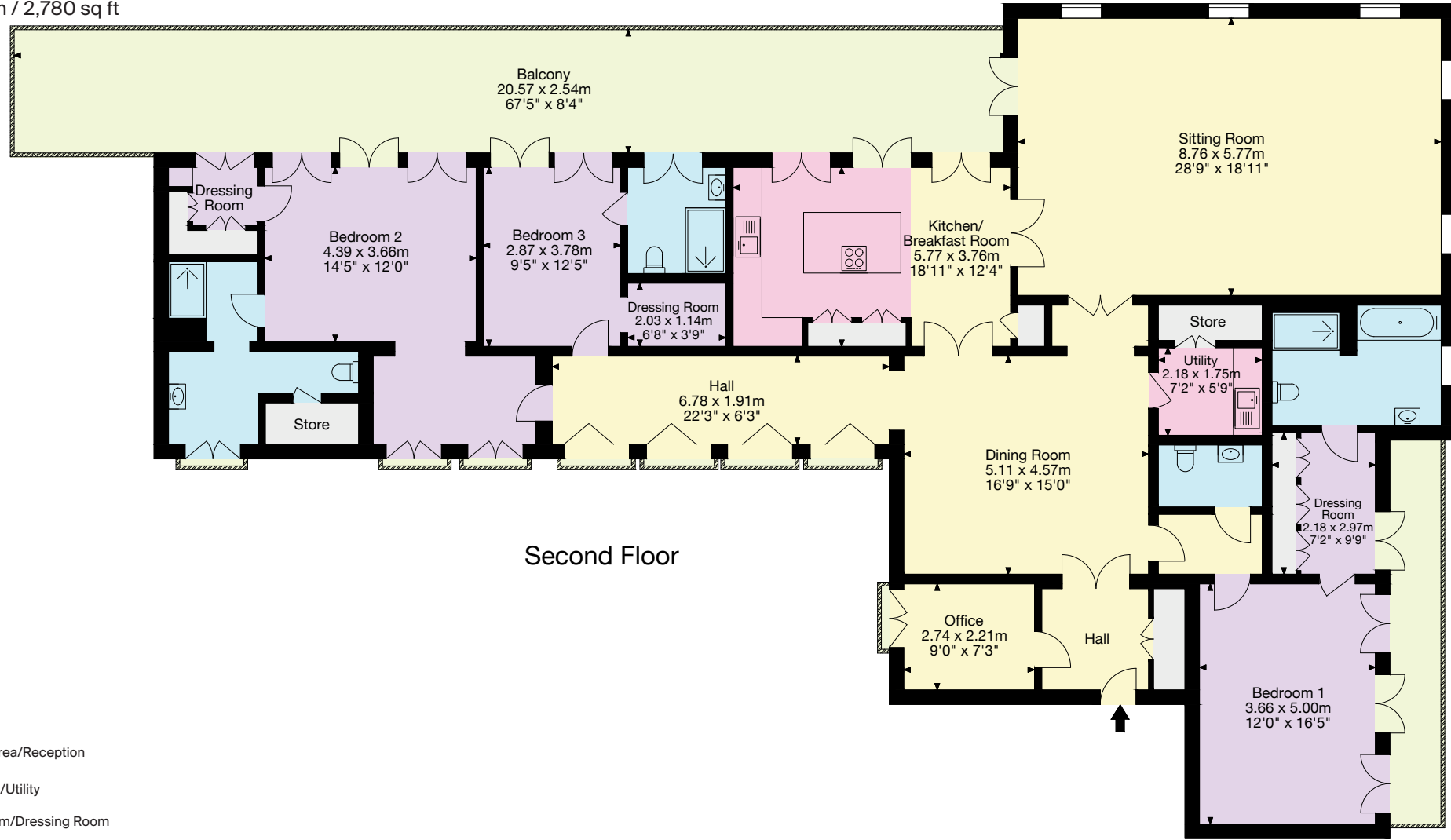


Royal Pavillion

Poundbury



Gross Internal Area (Approx.)
258 sq m / 2,780 sq ft



- Living Area/Reception
- Kitchen/Utility
- Bedroom/Dressing Room
- Bathroom/WC
- Vaults/Storage
- Terrace/Outside Space

Important Notice: This plan is not to scale (unless specified), is for guidance only and must not be relied upon as a statement of fact. All measurements and areas are approximate only (and have been prepared in accordance with the current edition of the RICS Code of Measuring Practice). Please read the Important Notice on the last page of text of the particulars. © Capture Property Marketing 2025.