



Upton Farm House, Shifnal, Shropshire





# Upton Farm House, Upton Lane, Shifnal **TF11 9HF**

---

A handsome and beautifully presented period country house with landscaped grounds and far reaching views.

## Summary of accommodation

### Ground Floor

Hallway | Sitting room | Drawing room | Kitchen  
Dining room | Utility room | W.C | Store

### First Floor

Principal bedroom with free-standing bath | A further four  
double bedrooms | Family bathroom | Office space

## Gardens, grounds and outbuildings

Garaging | Games room | Garden/entertainment room

## Energy Performance Certificates

Upton Farm House Rating E

## Tenure

Freehold



**Knight Frank**  
9 College Hill  
Shrewsbury  
SY1 1LZ  
[knightfrank.co.uk](http://knightfrank.co.uk)

01743 664200  
[shrewsbury@knightfrank.com](mailto:shrewsbury@knightfrank.com)

**Tom Wright**  
01743 664204  
[tom.wright@knightfrank.com](mailto:tom.wright@knightfrank.com)

## Situation

Upton Farm House occupies a delightful, rural location surrounded by open countryside. The nearby town of Shifnal provides a full complement of local facilities which are ideal for everyday needs. The former new town of Telford and the city centres of both Wolverhampton and Birmingham give further extensive amenities. The historic Ironbridge is within easy reach whilst the open countryside and Shropshire Hills Area of Outstanding Natural Beauty are close-at-hand, providing excellent walking, cycling, and riding routes. The surrounding areas offer excellent schooling facilities for all ages in both the state and private sectors. Communications are convenient, with the A464 connecting to Wolverhampton, and onto the national motorway network. Shifnal Train Station has direct services to London, Shrewsbury, Birmingham and beyond.

Distances: Shifnal 1.4 mile, Telford 6 miles, Wolverhampton 11.8 miles, Shrewsbury 19 miles, Stafford 22.4 miles, Birmingham 30 miles (Distances and time approximate).

## Upton Farm House

Upton Farm House is a handsome country house found in a commanding, elevated position overlooking the Shropshire and Staffordshire plains. The property has been lovingly cared for, renovated, and extended by the current owners and now offers a wonderful period family home with a wealth of modern infrastructure.

A large central hallway provides an impressive entrance, connecting the primary rooms to the front, along with the kitchen breakfast room. The drawing room and sitting room both have beautiful sash windows, making the most of the south-easterly orientation. The drawing room has French doors out to landscaped gardens and a wonderful open fire. The sitting room has a log burning stove and connects through into the orangery which offers an excellent space over 27ft in length linked on three sides to the landscaped grounds via French doors. Its large central lantern provides an abundance of natural light. This room is open plan into the kitchen breakfast room with central island, Esse range and granite worktops. Across the hallway from the kitchen is a useful utility room and shower room.







## First Floor Accommodation

An impressive staircase leads to the large first floor landing which connects the five double bedroom and family bathroom. Of particular note is the principal bedroom with its freestanding roll top bath, wonderful views and range of fitted wardrobes.

A half landing provides a useful office area but could, subject to the necessary permissions, provide the perfect space for an en suite bathroom for the principal bedroom. The large family bathroom is beautifully fitted with twin sinks, a freestanding roll top bath and separate shower.





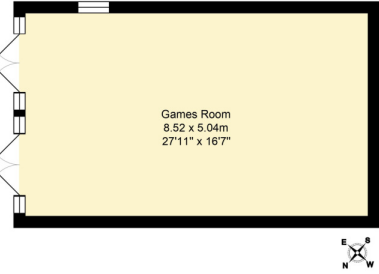
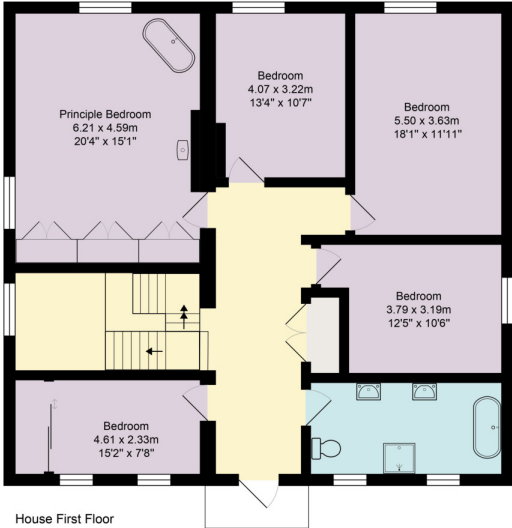
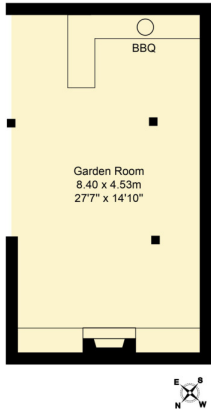
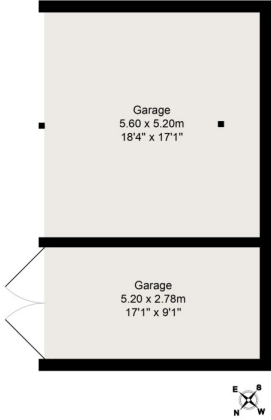
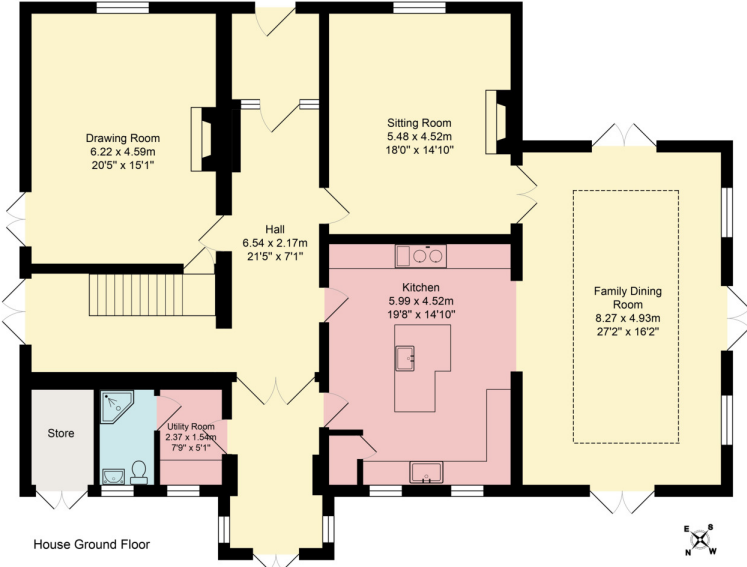
A wonderful period family home with a wealth of modern infrastructure.



# Upton Farm House

Approximate Gross Internal Floor Area  
 Main House 324 sq m / 3493 sq ft  
 Garage 44 sq m / 473 sq ft  
 Garden and Games room 80 sq m / 861 sq ft

This plan is for guidance only and must not be relied upon as a statement of fact. Attention is drawn to the important notice on the last page of the text of the Particulars.







## Garden, Grounds and Outbuildings

Totalling approximately 1.02 acres, Upton Farm House is surrounded by wonderful grounds, occupying an elevated position. The house is accessed via a sweeping gravelled drive to the front. Formal lawned areas are found to the north-east, south and north-west with wonderful large, terraced areas nearer to the property providing excellent entertainment space. Adjacent to the house is a fantastic garden room with outdoor kitchen and open fire. Near to this building is a beautifully fitted games room measuring over 27ft in length and fitted with home cinema facilities. Garaging is found adjacent to the driveway, a handsome building of oak construction with one secure bay and two open bays. The gardens have been beautifully planted and landscaped, including a number of mature trees providing privacy.

## Agents Note

The owners of Upton Farmhouse also own the barns to the North which could be available by separate negotiation if required. Please ask the agent for further detail.





# Upton Farm House, Upton Lane, Shifnal, Shropshire

## Directions (TF11 9HF)

From Shifnal, head south on the A464. Upon leaving the town, crest the brow of the hill and pass the Tong/Ryton crossroads where Upton Farm House will be found immediately on your righthand side. The entrance to the driveway is at the end of the large brick wall.

## Property Information

Local authority: Shropshire County Council

Council Tax: Band G

Services: Mains electricity and water. Private drainage and oil-fired central heating. PV solar panels and storage batteries.

**Knight Frank**

**Knight Frank**

9 College Hill

Shrewsbury

SY1 1LZ

[knightfrank.co.uk](https://www.knightfrank.co.uk)

I would be delighted to tell you more

**Tom Wright**

01743 664204

[tom.wright@knightfrank.com](mailto:tom.wright@knightfrank.com)



Fixtures and fittings: A list of the fitted carpets, curtains, light fittings and other items fixed to the property which are included in the sale (or may be available by separate negotiation) will be provided by the Seller's Solicitors.

Important Notice: 1. Particulars: These particulars are not an offer or contract, nor part of one. You should not rely on statements by Knight Frank LLP in the particulars or by word of mouth or in writing ("information") as being factually accurate about the property, its condition or its value. Neither Knight Frank LLP nor any joint agent has any authority to make any representations about the property, and accordingly any information given is entirely without responsibility on the part of the agents, seller(s) or lessor(s). 2. Photos, Videos etc: The photographs, property videos and virtual viewings etc. show only certain parts of the property as they appeared at the time they were taken. Areas, measurements and distances given are approximate only. 3. Regulations etc: Any reference to alterations to, or use of, any part of the property does not mean that any necessary planning, building regulations or other consent has been obtained. A buyer or lessee must find out by inspection or in other ways that these matters have been properly dealt with and that all information is correct. 4. VAT: The VAT position relating to the property may change without notice. 5. To find out how we process Personal Data, please refer to our Group Privacy Statement and other notices at <https://www.knightfrank.com/legals/privacy-statement>. Particulars dated February 2024. Photographs and videos dated February 2024.

All information is correct at the time of going to print. Knight Frank is the trading name of Knight Frank LLP. Knight Frank LLP is a limited liability partnership registered in England and Wales with registered number OC305934. Our registered office is at 55 Baker Street, London W1U 8AN. We use the term 'partner' to refer to a member of Knight Frank LLP, or an employee or consultant. A list of members names of Knight Frank LLP may be inspected at our registered office. If you do not want us to contact you further about our services then please contact us by either calling 020 3544 0692, email to [marketing.help@knightfrank.com](mailto:marketing.help@knightfrank.com) or post to our UK Residential Marketing Manager at our registered office (above) providing your name and address.

