



Chester Terrace, Regent's Park **NWI**

---





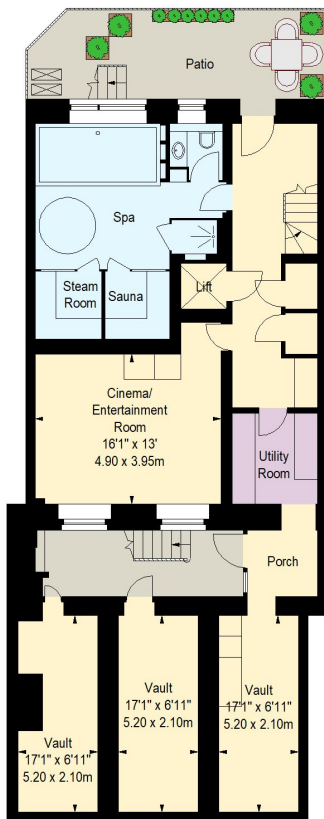
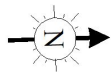




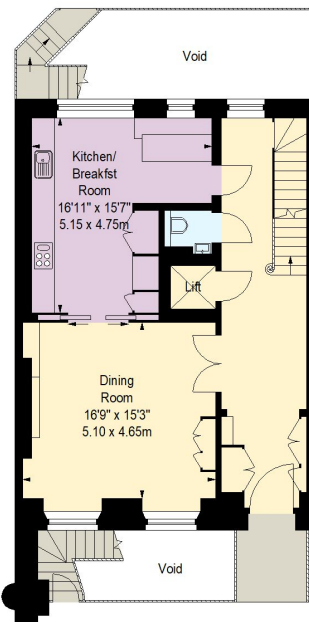


**Chester Terrace,**  
**Regents Park, NW1**  
 Approximate gross internal area  
 4350 sq ft / 404.12 sq m  
 (Including Internal Vault & Excluding Outside Vaults)  
 Outside Vaults  
 259 sq ft / 24.06 sq m

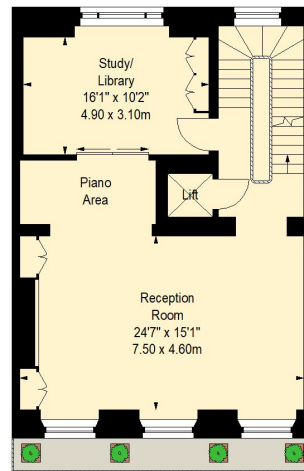
Key :  
CH - Ceiling Height



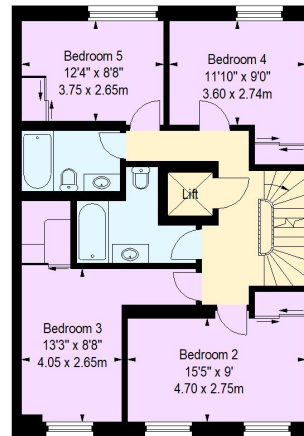
Lower Ground Floor



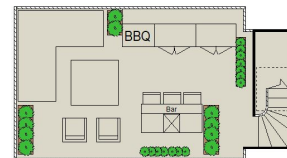
Ground Floor



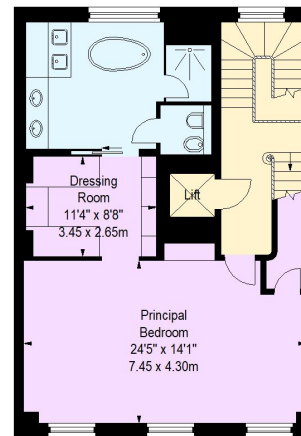
First Floor



Third Floor



Roof Top



Second Floor

The floor plan is not to scale and measurements and areas shown are approximate and therefore should be used for illustrative purposes only. The plan has been prepared in accordance with the RICS code of Measuring Practice and whilst we have confidence in the information produced, it must not be relied on. If there is any aspect of particular importance, you should carry out or commission your own inspection of the property.

© Orange Tree Photography