

# Randolph Avenue, Maida Vale, W9





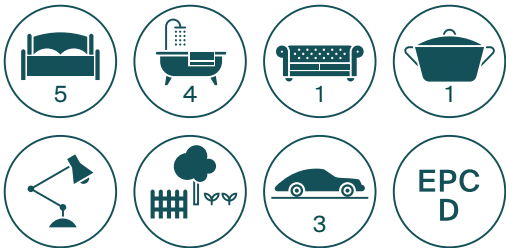


Arranged over approximately 3,810sqft. and spread over four floors is this five bedroom semi-detached home with off street parking for three cars on one of the most in demand streets in Little Venice, neighbouring the canal.

Upon entrance you are greeted with high ceilings and an abundance of light leading to a study and currently the Principle bedroom along with a dressing room and en-suite.

On the lower ground floor you find an vast, open family space with impressive ceiling height along with conservatory onto the 55'c\*\* garden and the kitchen. The kitchen also leads onto a spacious front patio.

On the first and second floors you find two bedrooms on each. The first floor bedrooms offer en-suite bathrooms with the larger of the two having a generous south facing balcony. The second floor bedrooms, both of good proportions have the share of the family bathroom.



*Ideally located for the array of shops, restaurants, boutiques and pavement cafes at Clifton Road, Little Venice. A short walk to Warwick Avenue with it's excellent transport links to Heathrow and other parts of the capital.*







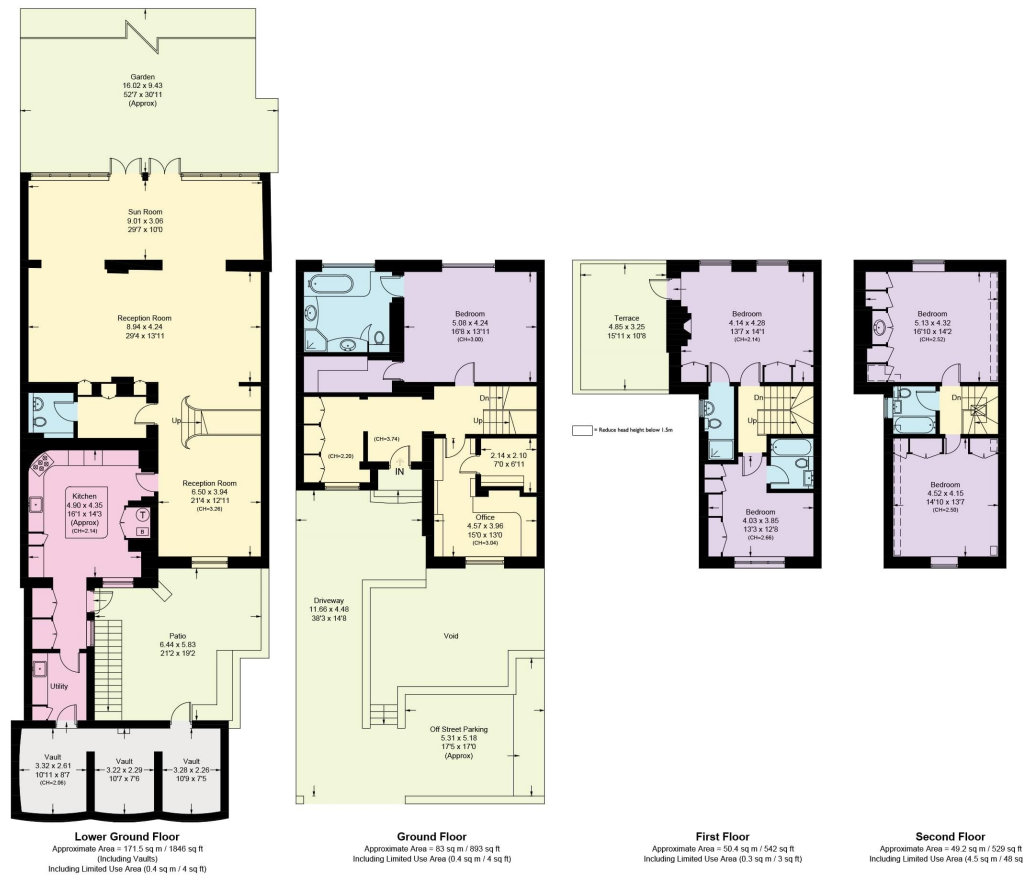
**Five bedroom semi-detached house in the heart of Little Venice, W9.**





# Randolph Avenue, W9

Approximate Area = 354.1 sq m / 3810 sq ft  
(Including Vaults)  
Including Limited Use Area (5.6 sq m / 59 sq ft)



Surveyed and drawn in accordance with the International property measurements standards (IPMS 2: Residential) Not drawn to scale unless stated.  
Whilst every care is taken in the preparation of this plan, please check all dimensions, shapes and compass bearings before making any decisions reliant upon them.

Knight Frank  
St Johns Wood  
5-7 Wellington Place  
London NW8 7PB

**We would be delighted to tell you more.**

**Declan Selbo**

declan.selbo@knightfrank.com

[knightfrank.co.uk](https://www.knightfrank.co.uk)



Your partners in property for 125 years

Fixtures and fittings: A list of the fitted carpets, curtains, light fittings and other items fixed to the property which are included in the sale (or may be available by separate negotiation) will be provided by the Seller's Solicitors.

Important Notice: 1. Particulars: These particulars are not an offer or contract, nor part of one. You should not rely on statements by Knight Frank LLP in the particulars or by word of mouth or in writing ("information") as being factually accurate about the property, its condition or its value. Neither Knight Frank LLP nor any joint agent has any authority to make any representations about the property, and accordingly any information given is entirely without responsibility on the part of the agents, seller(s) or lessor(s). 2. Photos, Videos etc: The photographs, property videos and virtual viewings etc. show only certain parts of the property as they appeared at the time they were taken. Areas, measurements and distances given are approximate only. 3. Regulations etc: Any reference to alterations to, or use of, any part of the property does not mean that any necessary planning, building regulations or other consent has been obtained. A buyer or lessee must find out by inspection or in other ways that these matters have been properly dealt with and that all information is correct. 4. VAT: The VAT position relating to the property may change without notice. 5. To find out how we process Personal Data, please refer to our Group Privacy Statement and other notices at <https://www.knightfrank.com/legals/privacy-statement>.

Particulars dated November 2021. Photographs and videos dated November 2021.

Knight Frank is the trading name of Knight Frank LLP. Knight Frank LLP is a limited liability partnership registered in England and Wales with registered number OC305934. Our registered office is at 55 Baker Street, London W1U 8AN where you may look at a list of members' names. If we use the term 'partner' when referring to one of our representatives, that person will either be a member, employee, worker or consultant of Knight Frank LLP and not a partner in a partnership. If you do not want us to contact you further about our services then please contact us by either calling 020 3544 0692, email to [marketing.help@knightfrank.com](mailto:marketing.help@knightfrank.com) or post to our UK Residential Marketing Manager at our registered office (above) providing your name and address.