



Sutherland Avenue, London W9



Sutherland Avenue

London W9

A rare opportunity to acquire a charming three bedroom, duplex raised ground and garden maisonette in need of refurbishment with direct access to communal gardens in Maida Vale.

The apartment has a stunning mix of original period features with high ceilings throughout and a terrace with a spiral staircase leading to the private patio and communal gardens, including a private tennis court and direct access to Paddington Recreation ground. The property comprises two substantial reception rooms and a kitchen, all on the raised ground floor with large floor-to-ceiling windows, original fireplaces and access to the communal gardens. Furthermore, there are three bedrooms, with the principal bedroom having an en suite bathroom, dressing room and access to a private patio leading to the communal gardens.



Guide price: £2,950,000

Tenure: Share of freehold plus leasehold, approximately 96 years remaining

Service charge: £8,800 per annum, reviewed annually, next review due 2023

Ground rent: Peppercorn

Local authority: City of Westminster

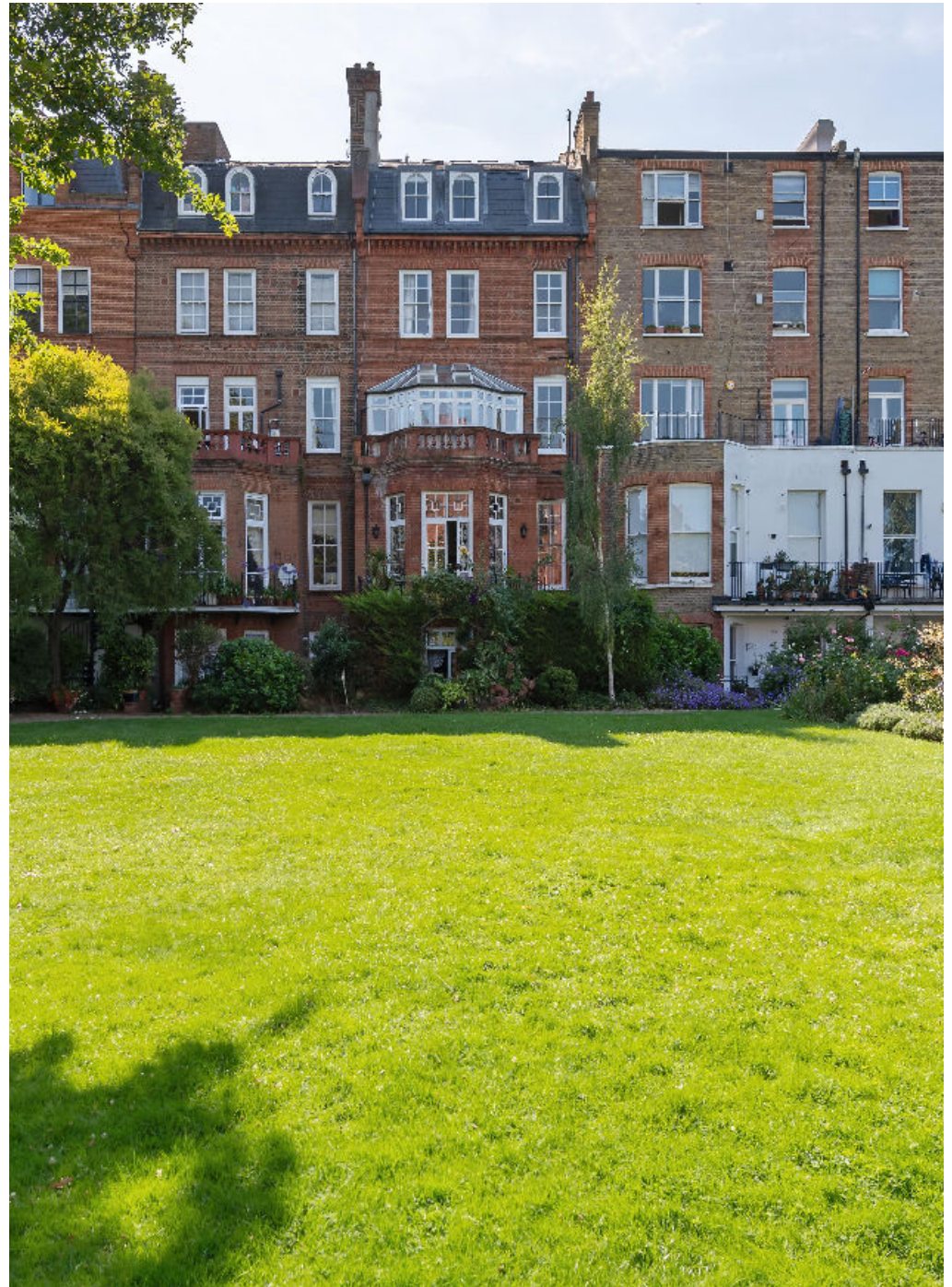
Council tax band: H

Location

Sutherland Avenue is a pretty tree lined street, moments from the cafes, restaurants and boutique shops on Clifton Road and Lauderdale Parade, together with the open space and sports facilities of Paddington Recreation Ground.



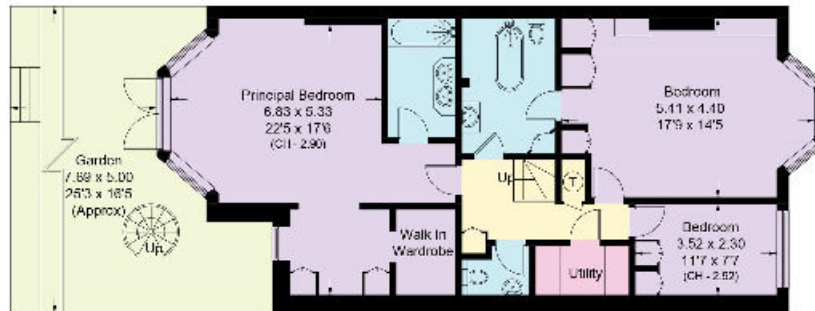




Approximate Area = 188.9 sq m / 2033 sq ft
Including Limited Use Area (0.9 sq m / 9 sq ft)



Ground Floor
Approximate Area
88.9 sq m / 957 sq ft
Including Limited Use Area
(0.6 sq m / 6 sq ft)



Lower Ground Floor
Approximate Area
100 sq m / 1076 sq ft
Including Limited Use Area
(0.3 sq m / 3 sq ft)

Knight Frank
St John's Wood
5-7 Wellington Pl
London
NW8 7PB
[knightfrank.co.uk](https://www.knightfrank.co.uk)

This plan is for guidance only and must not be relied upon as a statement of fact. Attention is drawn to the important notice on the last page of the text of the Particulars.

I would be delighted to tell you more
Henry Tait-Harris
+44 20 7483 8345
henrytait-harris@knightfrank.com



Fixtures and fittings: A list of the fitted carpets, curtains, light fittings and other items fixed to the property which are included in the sale (or may be available by separate negotiation) will be provided by the Seller's Solicitors.
Important Notice: 1. Particulars: These particulars are not an offer or contract, nor part of one. You should not rely on statements by Knight Frank LLP in the particulars or by word of mouth or in writing ("information") as being factually accurate about the property, its condition or its value. Neither Knight Frank LLP nor any joint agent has any authority to make any representations about the property, and accordingly any information given is entirely without responsibility on the part of the agents, seller(s) or lessor(s). 2. Photos, Videos etc: The photographs, property videos and virtual viewings etc. show only certain parts of the property as they appeared at the time they were taken. Areas, measurements and distances given are approximate only. 3. Regulations etc: Any reference to alterations to, or use of, any part of the property does not mean that any necessary planning, building regulations or other consent has been obtained. A buyer or lessee must find out by inspection or in other ways that these matters have been properly dealt with and that all information is correct. 4. VAT: The VAT position relating to the property may change without notice. 5. To find out how we process Personal Data, please refer to our Group Privacy Statement and other notices at <https://www.knightfrank.com/legals/privacy-statement>.
Particulars dated August 2023. Photographs and videos dated August 2023.

Knight Frank is the trading name of Knight Frank LLP. Knight Frank LLP is a limited liability partnership registered in England and Wales with registered number OC305934. Our registered office is at 55 Baker Street, London W1U 8AN where you may look at a list of members' names. If we use the term 'partner' when referring to one of our representatives, that person will either be a member, employee, worker or consultant of Knight Frank LLP and not a partner in a partnership. If you do not want us to contact you further about our services then please contact us by either calling 020 3544 0692, email to marketing.help@knightfrank.com or post to our UK Residential Marketing Manager at our registered office (above) providing your name and address.