



The Marlowes, St John's Wood NW8



# The Marlowes, St John's Wood **NW8**

An outstanding, recently refurbished five bedroom terraced house (2,628 sq ft / 244 sq m) with west-facing garden and off street parking in this sought-after cul-de-sac in St John's Wood.

This excellent family home has been extensively redeveloped to create a sensational family home which offers flexible and well-proportioned living accommodation. Arranged over four floors, the ground floor features a superb double reception room, a separate kitchen and guest cloakroom.



5



4



3



2



EPC  
C

**Guide price:** £3,650,000

**Tenure:** Freehold

**Local authority:** City of Westminster

**Council tax band:** H





On the first floor, a spacious reception room overlooking the garden, a double bedroom with an en suite shower room, and three more bedrooms and two bathrooms (one en suite) on the top floor. The lower ground floor provides a guest bedroom with en suite shower room, a family/TV room and a large utility room.

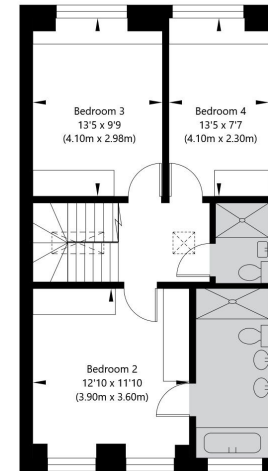
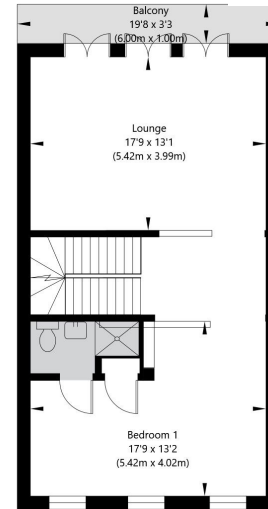
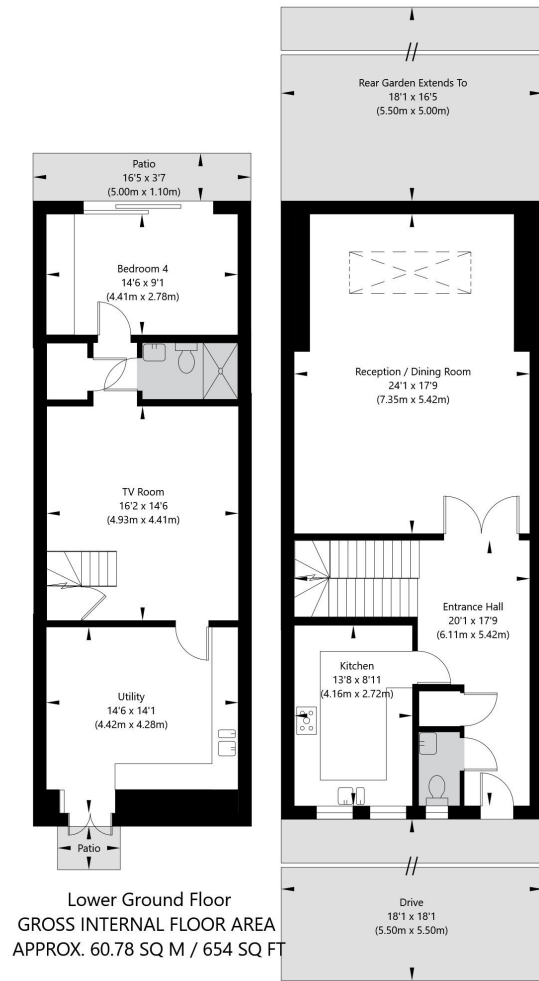
The Marlowes is ideally located close to both St John's Wood and Swiss Cottage Underground Stations (Jubilee Line), the numerous cafes, restaurants and fashionable boutiques on the High Street and The American School.





# The Marlowes, London NW8 6NA

APPROXIMATE GROSS INTERNAL FLOOR AREA 244.24 SQ M / 2628 SQ FT



**Knight Frank**  
St John's Wood  
5-7 Wellington Pl  
London  
NW8 7PB  
[knightfrank.co.uk](http://knightfrank.co.uk)

I would be delighted to tell you more  
**Neir Gigi**  
+44 20 7483 8334  
[neir.gigi@knightfrank.com](mailto:neir.gigi@knightfrank.com)



Fixtures and fittings: A list of the fitted carpets, curtains, light fittings and other items fixed to the property which are included in the sale (or may be available by separate negotiation) will be provided by the Seller's Solicitors.

Important Notice: 1. Particulars: These particulars are not an offer or contract, nor part of one. You should not rely on statements by Knight Frank LLP in the particulars or by word of mouth or in writing ("information") as being factually accurate about the property, its condition or its value. Neither Knight Frank LLP nor any joint agent has any authority to make any representations about the property, and accordingly any information given is entirely without responsibility on the part of the agents, seller(s) or lessor(s). 2. Photos, Videos etc: The photographs, property videos and virtual viewings etc. show only certain parts of the property as they appeared at the time they were taken. Areas, measurements and distances given are approximate only. 3. Regulations etc: Any reference to alterations to, or use of, any part of the property does not mean that any necessary planning, building regulations or other consent has been obtained. A buyer or lessee must find out by inspection or in other ways that these matters have been properly dealt with and that all information is correct. 4. VAT: The VAT position relating to the property may change without notice. 5. To find out how we process Personal Data, please refer to our Group Privacy Statement and other notices at <https://www.knightfrank.com/legals/privacy-statement>. Particulars dated March 2024. Photographs and videos dated March 2024.

All information is correct at the time of going to print. Knight Frank is the trading name of Knight Frank LLP. Knight Frank LLP is a limited liability partnership registered in England and Wales with registered number OC305934. Our registered office is at 55 Baker Street, London W1U 8AN. We use the term 'partner' to refer to a member of Knight Frank LLP, or an employee or consultant. A list of members names of Knight Frank LLP may be inspected at our registered office. If you do not want us to contact you further about our services then please contact us by either calling 020 3544 0692, email to [marketing.help@knightfrank.com](mailto:marketing.help@knightfrank.com) or post to our UK Residential Marketing Manager at our registered office (above) providing your name and address.