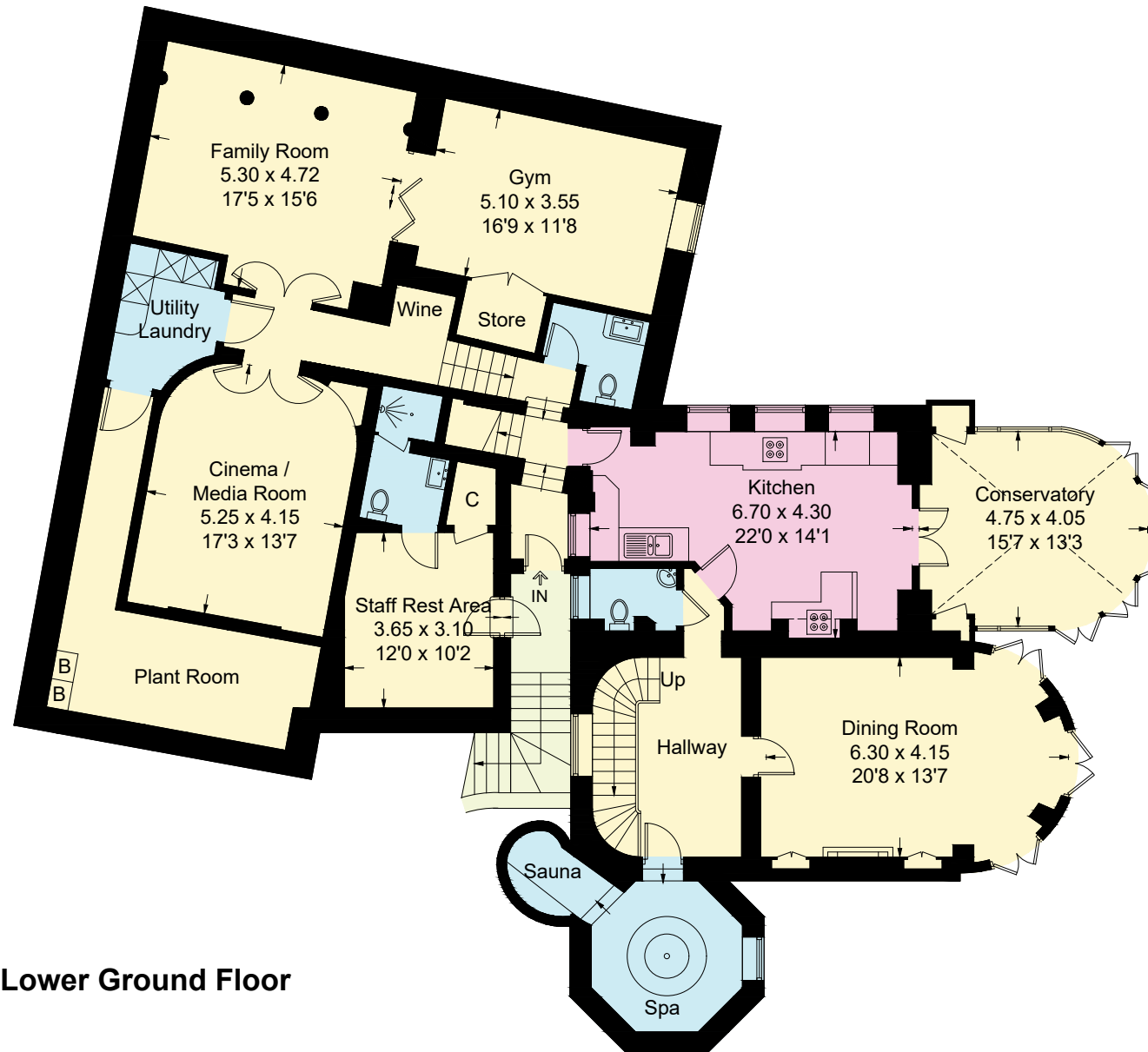


Park Village West, NW1

Approximate Area = 239.1 sq m / 2574 sq ft

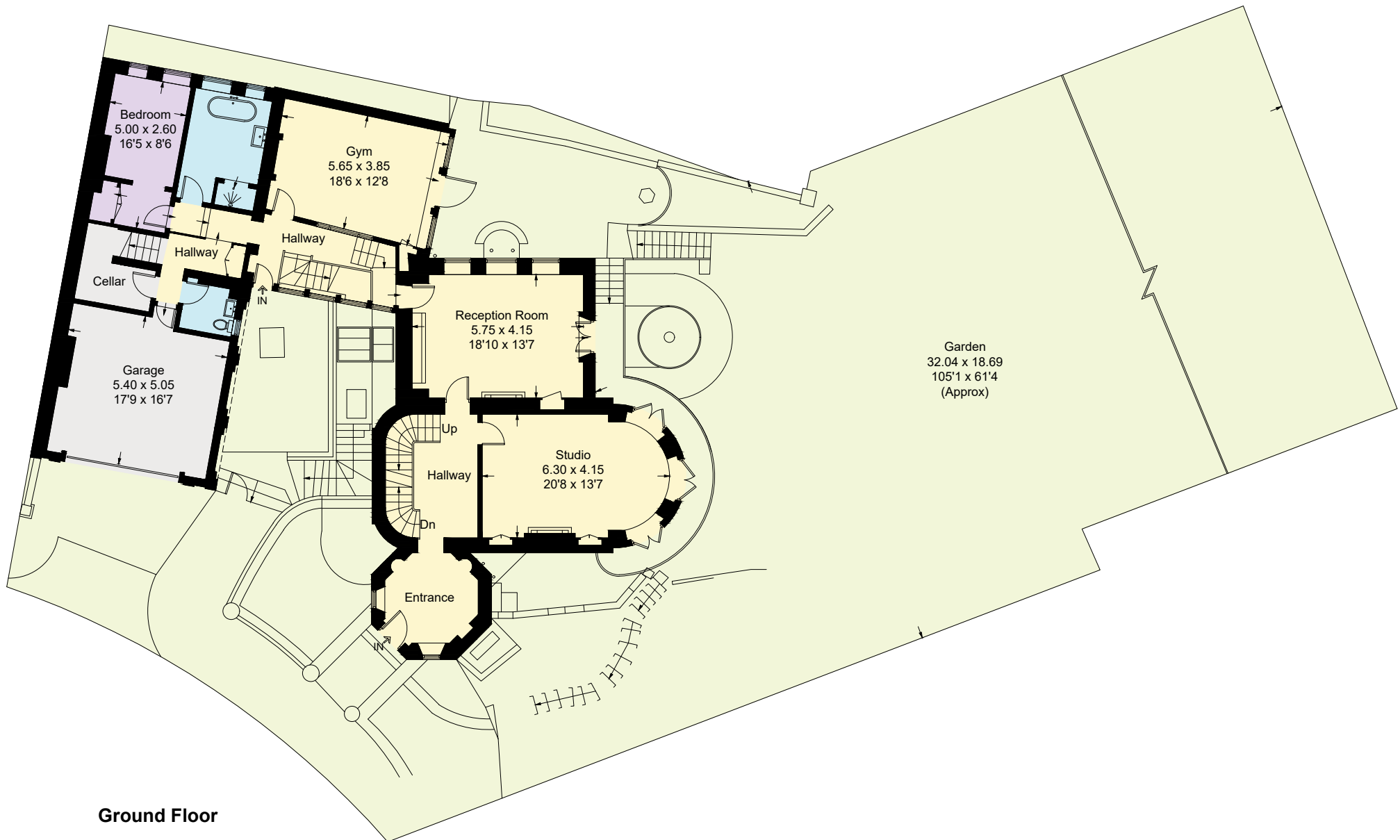


Lower Ground Floor

This plan is for layout guidance only. Not drawn to scale unless stated. Windows and door openings are approximate. Whilst every care is taken in the preparation of this plan, please check all dimensions, shapes and compass bearings before making any decisions reliant upon them. (ID721772)

Park Village West, NW1

Approximate Area = 182.5 sq m / 1964 sq ft

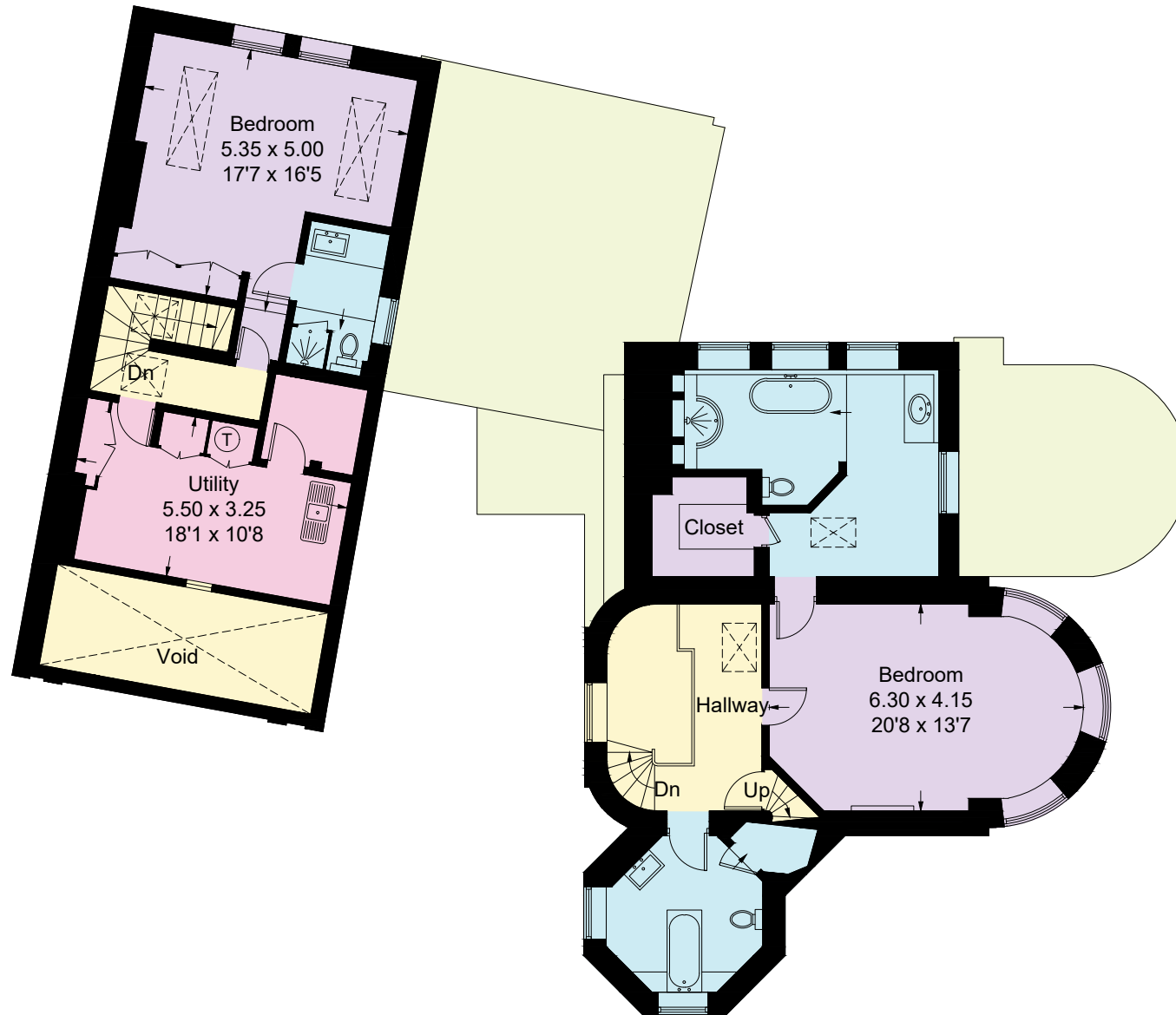


Ground Floor

This plan is for layout guidance only. Not drawn to scale unless stated. Windows and door openings are approximate. Whilst every care is taken in the preparation of this plan, please check all dimensions, shapes and compass bearings before making any decisions reliant upon them. (ID721772)

Park Village West, NW1

Approximate Area = 132.5 sq m / 1426 sq ft
(Excluding Void)

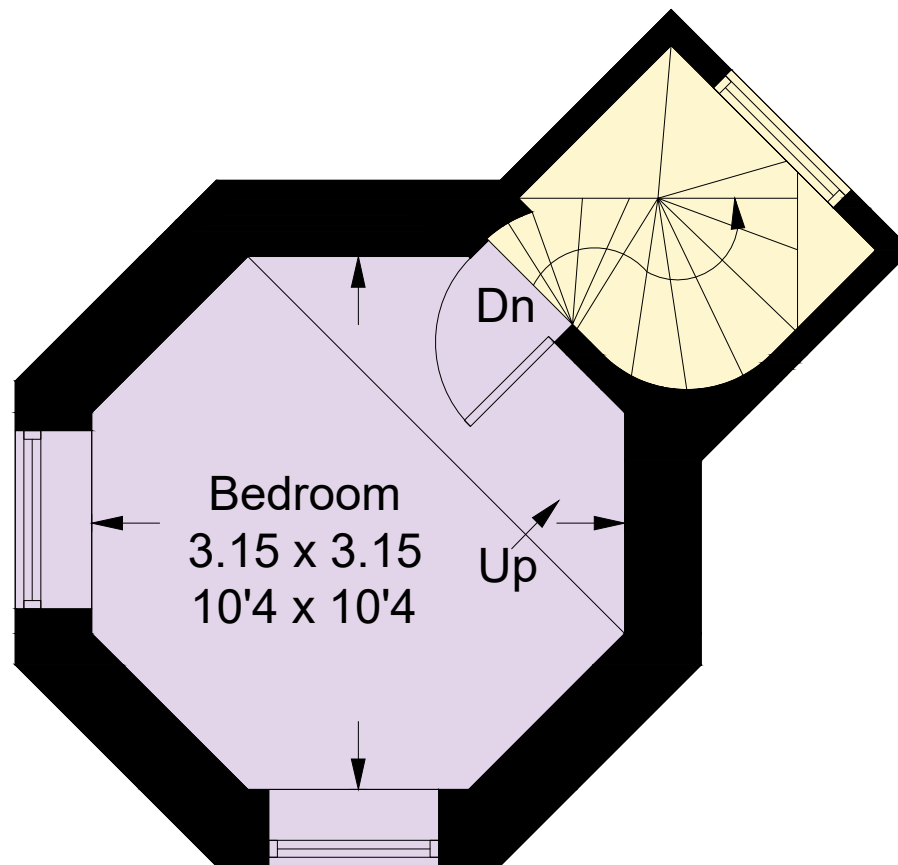


First Floor

This plan is for layout guidance only. Not drawn to scale unless stated. Windows and door openings are approximate. Whilst every care is taken in the preparation of this plan, please check all dimensions, shapes and compass bearings before making any decisions reliant upon them. (ID721772)

Park Village West, NW1

Approximate Area = 10.9 sq m / 118 sq ft



Second Floor

This plan is for layout guidance only. Not drawn to scale unless stated. Windows and door openings are approximate. Whilst every care is taken in the preparation of this plan, please check all dimensions, shapes and compass bearings before making any decisions reliant upon them. (ID721772)