



Park Mansions, Knightsbridge **SW1X**

---

# Park Mansions, Knightsbridge **SW1X**

---

A contemporary and generously sized one bedroom apartment in Park Mansions. Located on the sixth floor of a purpose built, red brick mansion building in the heart of Knightsbridge, the apartment comprises well-presented accommodation with excellent ceiling heights.

It features a smart, open-plan reception room with an integrated dining area, a large double bedroom with fitted wardrobes, a separate fitted kitchen, and a modern family bathroom. The apartment further benefits from a smart communal entrance and enjoys views over Brompton Road and Harrods. The building further benefits from a lift and porter.



**Guide price:** £1,195,000

**Local authority:** Royal Borough of Westminster City

**Council tax band:** G





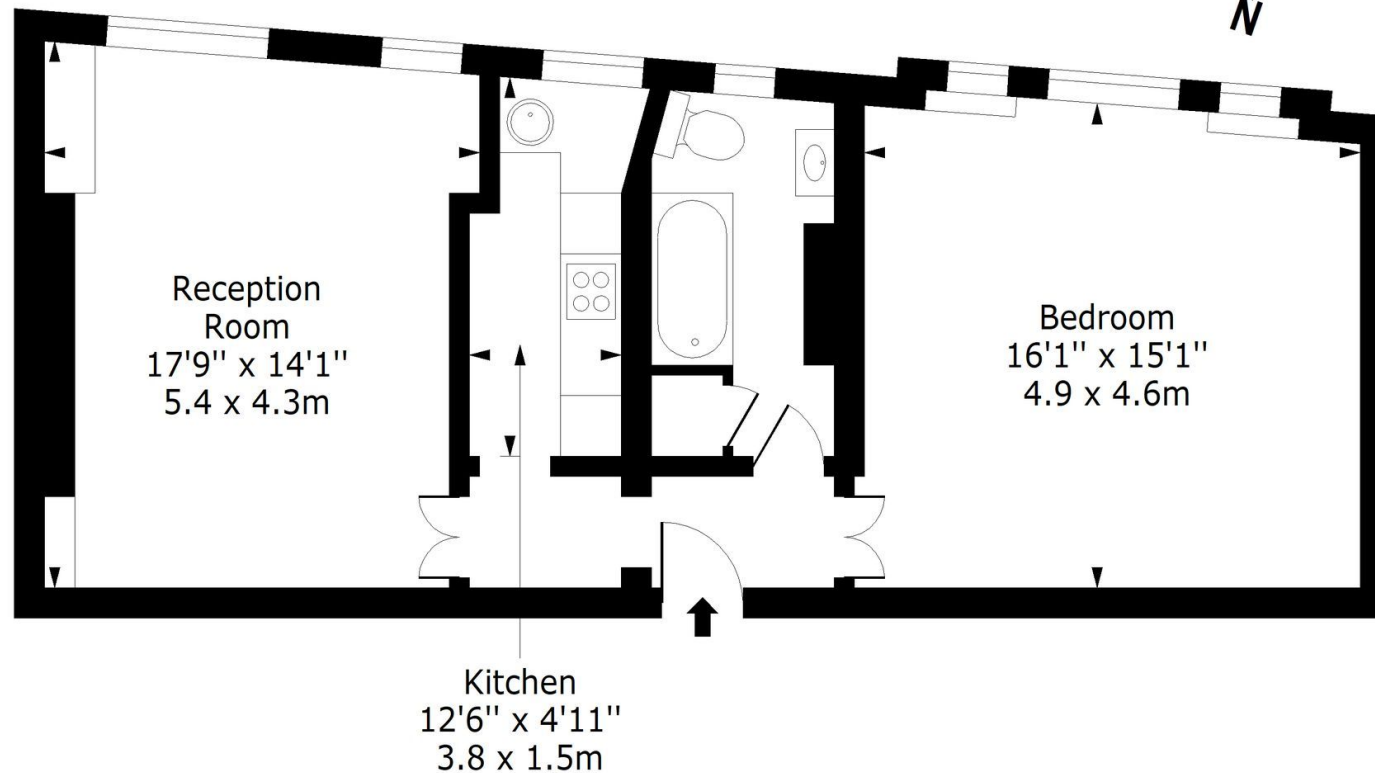
## Location

The property is superbly situated moments from the green spaces of Hyde Park and is well located for transport links, including Knightsbridge Underground Station, providing the Piccadilly line. Located moments from Harrods and Sloane Street, the property has the world-class shops and restaurants Knightsbridge has to offer on its doorstep.



# Park Mansions, SW1X

Approx. Gross Internal Area 693 Sq Ft - 64.38 Sq M



## Sixth Floor

Floor Area 693 Sq Ft - 64.38 Sq M

**Knight Frank**  
Knightsbridge  
52-54 Sloane Avenue  
London SW3 3DD

We would be delighted to tell you more

**James Robinson**  
+44 20 7861 1792  
james.robinson@knightfrank.com

[knightfrank.co.uk](https://www.knightfrank.co.uk)



Fixtures and fittings: A list of the fitted carpets, curtains, light fittings and other items fixed to the property which are included in the sale (or may be available by separate negotiation) will be provided by the Seller's Solicitors.

Important Notice: 1. Particulars: These particulars are not an offer or contract, nor part of one. You should not rely on statements by Knight Frank LLP in the particulars or by word of mouth or in writing ("information") as being factually accurate about the property, its condition or its value. Neither Knight Frank LLP nor any joint agent has any authority to make any representations about the property, and accordingly any information given is entirely without responsibility on the part of the agents, seller(s) or lessor(s). 2. Photos, Videos etc: The photographs, property videos and virtual viewings etc. show only certain parts of the property as they appeared at the time they were taken. Areas, measurements and distances given are approximate only. 3. Regulations etc: Any reference to alterations to, or use of, any part of the property does not mean that any necessary planning, building regulations or other consent has been obtained. A buyer or lessee must find out by inspection or in other ways that these matters have been properly dealt with and that all information is correct. 4. VAT: The VAT position relating to the property may change without notice. 5. To find out how we process Personal Data, please refer to our Group Privacy Statement and other notices at <https://www.knightfrank.com/legals/privacy-statement>.

Particulars dated December 2020. Photographs and videos dated December 2020.

Knight Frank is the trading name of Knight Frank LLP. Knight Frank LLP is a limited liability partnership registered in England and Wales with registered number OC305934. Our registered office is at 55 Baker Street, London W1U 8AN where you may look at a list of members' names. If we use the term 'partner' when referring to one of our representatives, that person will either be a member, employee, worker or consultant of Knight Frank LLP and not a partner in a partnership. If you do not want us to contact you further about our services then please contact us by either calling 020 3544 0692, email to [marketing.help@knightfrank.com](mailto:marketing.help@knightfrank.com) or post to our UK Residential Marketing Manager at our registered office (above) providing your name and address.