



Princes Gate Mews, Knightsbridge SW7



A contemporary house, in Knightsbridge SW7

Situated in a south facing position in a quiet position within Princes Gate Mews, this house benefits from air conditioning and an internal garage and is set over four floors and spans approximately 2904 sq ft.

This wide home was rebuilt behind the façade and features a newly constructed lower ground floor. Comprising a sleek eat-in kitchen, three double bedrooms, two en suite bathrooms, guest cloakroom and plush home gym area.

The specification and execution of works are of the highest standards and includes home automation and air conditioning.



Guide price: £5,950,000

Tenure: Available freehold

Local authority: Royal Borough of Kensington and Chelsea

Council tax band: H



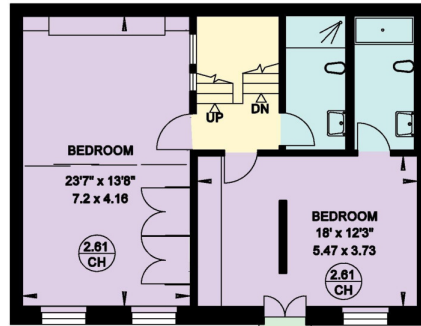




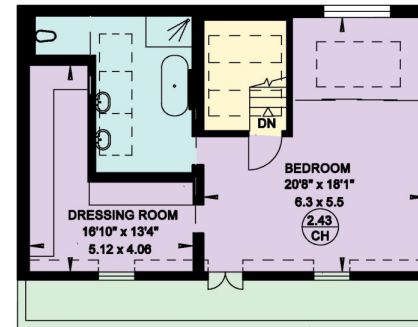


Approximate Gross Internal Floor Area 273.10 sq m / 2940 sq ft

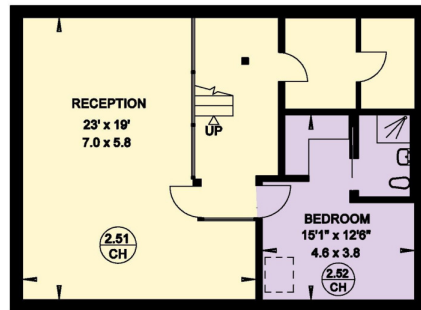
This plan is for guidance only and must not be relied upon as a statement of fact. Attention is drawn to the important notice on the last page of the text of the Particulars.



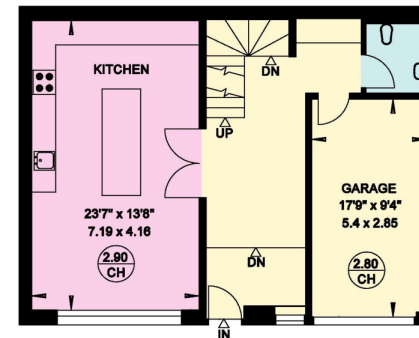
FIRST FLOOR



SECOND FLOOR



LOWER GROUND FLOOR



GROUND FLOOR

Knight Frank
Knightsbridge
52 - 54 Sloane Avenue
London
SW3 3DD
knightfrank.co.uk

I would be delighted to tell you more
Roly Ingleby MacKenzie
+44 20 7881 7721
roly.im@knightfrank.com



Fixtures and fittings: A list of the fitted carpets, curtains, light fittings and other items fixed to the property which are included in the sale (or may be available by separate negotiation) will be provided by the Seller's Solicitors.

Important Notice: 1. Particulars: These particulars are not an offer or contract, nor part of one. You should not rely on statements by Knight Frank LLP in the particulars or by word of mouth or in writing ("information") as being factually accurate about the property, its condition or its value. Neither Knight Frank LLP nor any joint agent has any authority to make any representations about the property, and accordingly any information given is entirely without responsibility on the part of the agents, seller(s) or lessor(s). 2. Photos, Videos etc: The photographs, property videos and virtual viewings etc. show only certain parts of the property as they appeared at the time they were taken. Areas, measurements and distances given are approximate only. 3. Regulations etc: Any reference to alterations to, or use of, any part of the property does not mean that any necessary planning, building regulations or other consent has been obtained. A buyer or lessee must find out by inspection or in other ways that these matters have been properly dealt with and that all information is correct. 4. VAT: The VAT position relating to the property may change without notice. 5. To find out how we process Personal Data, please refer to our Group Privacy Statement and other notices at <https://www.knightfrank.com/legals/privacy-statement>.

Particulars dated October 2023. Photographs and videos dated October 2023.

Knight Frank is the trading name of Knight Frank LLP. Knight Frank LLP is a limited liability partnership registered in England and Wales with registered number OC305934. Our registered office is at 55 Baker Street, London W1U 8AN where you may look at a list of members' names. If we use the term 'partner' when referring to one of our representatives, that person will either be a member, employee, worker or consultant of Knight Frank LLP and not a partner in a partnership. If you do not want us to contact you further about our services then please contact us by either calling 020 3544 0692, email to marketing.help@knightfrank.com or post to our UK Residential Marketing Manager at our registered office (above) providing your name and address.