



PONT STREET MEWS

Knightsbridge, SW1X



SPACIOUS CORNER MEWS MASTERPIECE

A sensational double fronted house created by combining two adjacent mews properties, and furthermore commanding a corner plot offering plenty of additional natural light.



Local Authority: Royal Borough of Kensington and Chelsea

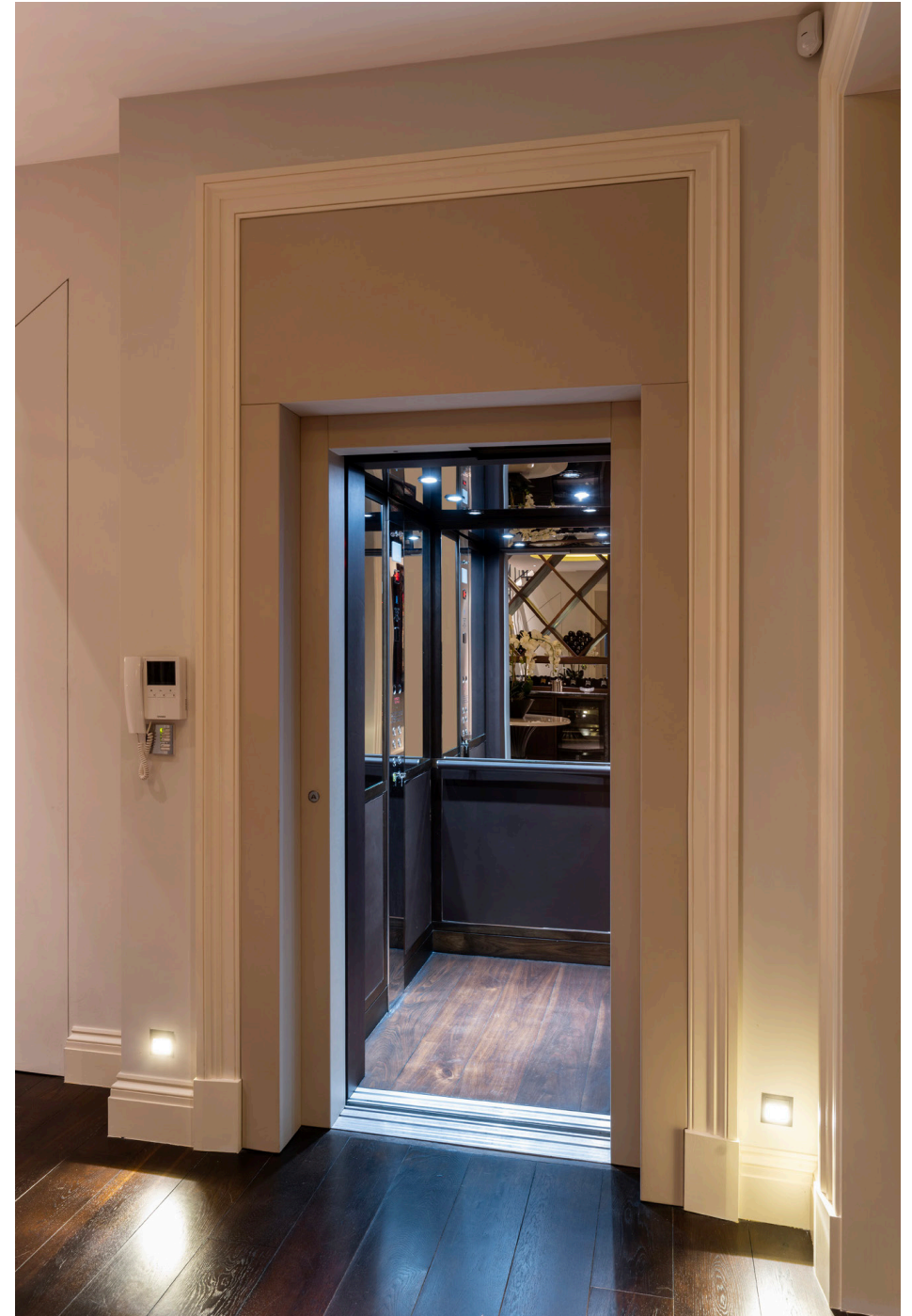
Council Tax band: H

Tenure: Freehold

Guide Price: £12,950,000



Busdande cullabo ritendae consera tecatem quissunda nihic tet et maionse
ndaectecto con consece stiandae. Nam quas sedit, alitissimus vel imi, to etus
ut odipictemque porem doleniet vellupicatis remporro odia sequos aspid unt
doloreror accullandis dolecte mi, volor remporporios iusam, quis simus, quae
nesequi dignate es sero ipsanissedi doluptae et unt.









Benefitting from en suites to all bedrooms, a cinema room, gym, garage, roof terrace, and a lift to all floors this house not only provides exceptional features, but is also one of central London's most exclusive, secure, discreet and desirable streets.







THE PERFECT LONDON LOCATION

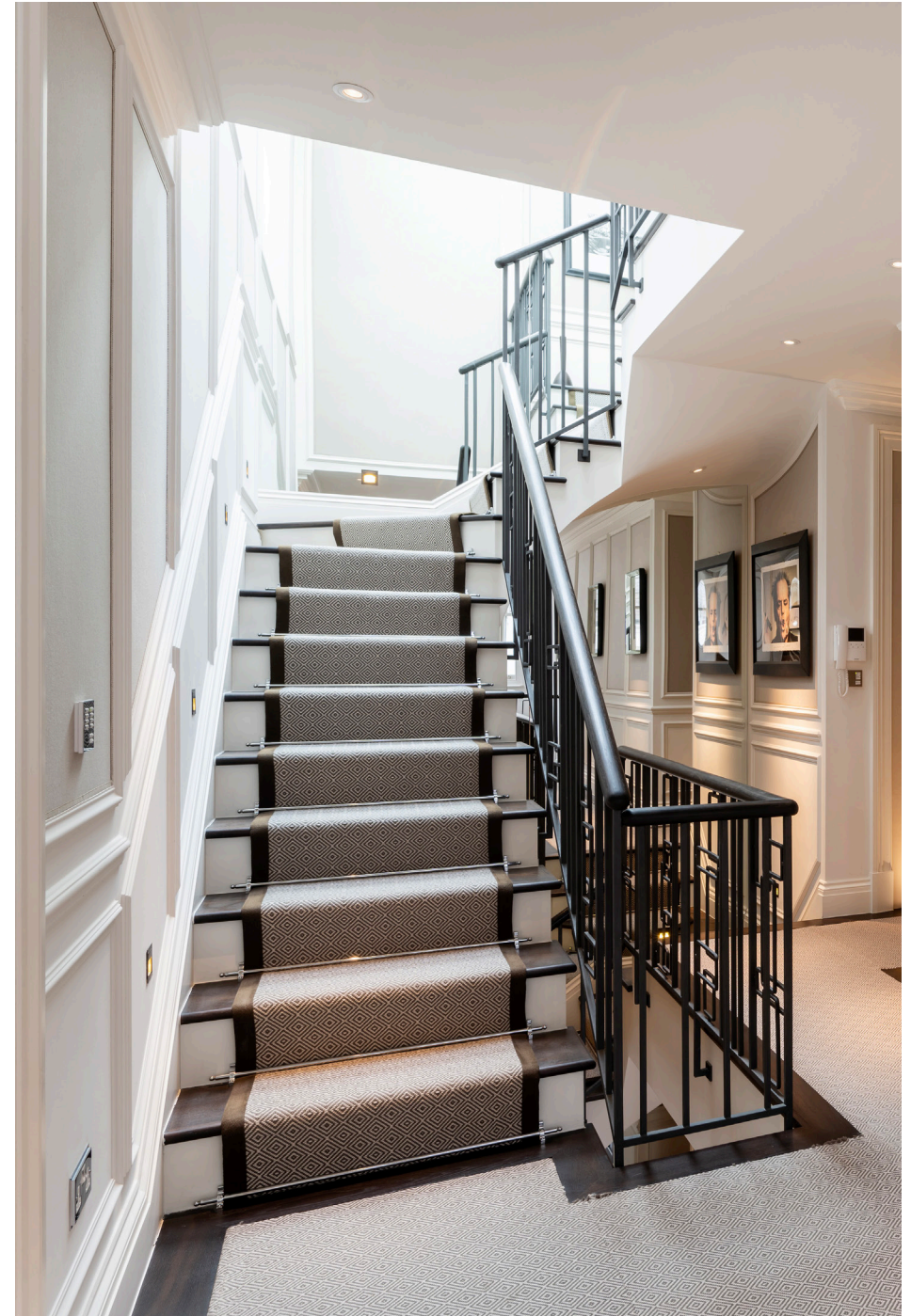
Pont Street Mews is a highly sought after private mews in Knightsbridge, moments from Harrods and Sloane Square. With easy access to Belgravia, Chelsea and South Kensington, there is world-class shopping, restaurants and transport links within close proximity. Knightsbridge Underground Station (Piccadilly line) is only a short walk from the property and this provides excellent links to both Heathrow & the West End.





Expertly designed and finished to the highest standard, the kitchen is both functional and refined. Bespoke cabinetry, premium appliances, and well-considered materials create a space suited for both everyday use and entertaining. The layout maximizes efficiency, while natural light enhances the clean lines and sophisticated finishes, reflecting the attention to detail evident throughout the home. A well-proportioned staircase links the floors, with wide hallways ensuring an effortless flow between spaces.

The downstairs living area is spacious and well-balanced, designed to offer both comfort and versatility. Large windows bring in natural light, while bespoke joinery and premium finishes add depth and warmth to the space. The design ensures a seamless transition between formal and informal living, making it equally suited for entertaining or day-to-day use.







INTENTIONALLY CRAFTED DESIGN

Each bedroom is thoughtfully designed with well-integrated storage solutions and high-quality finishes. Bathrooms are fitted with premium materials and modern fixtures, combining practicality with a refined aesthetic. Walk-in closets and dressing areas are designed for both functionality and style, ensuring a well-organized and considered use of space.

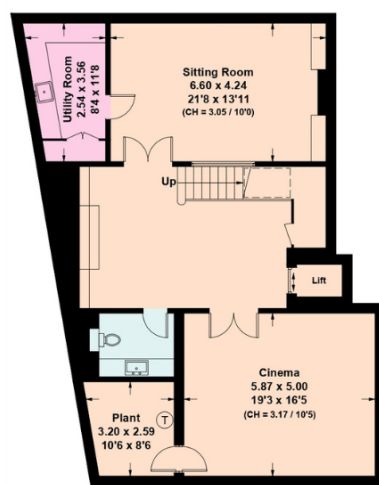




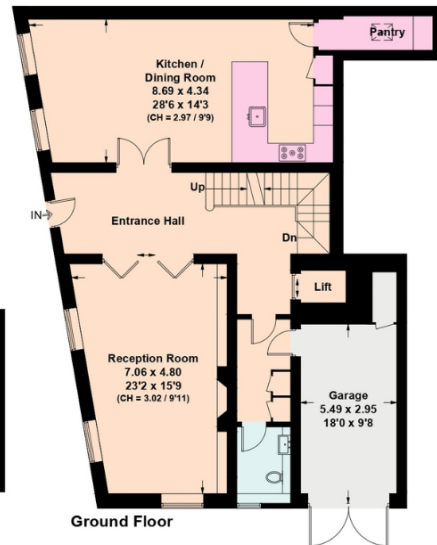
The primary suite is generously proportioned, benefiting from natural light and a well-appointed en-suite bathroom featuring elegant, high-spec finishes. Additional bedrooms maintain the same level of quality, offering flexible accommodation for family and guests. The careful selection of materials and the meticulous approach to layout and detailing are evident throughout, ensuring a cohesive and well-executed design.



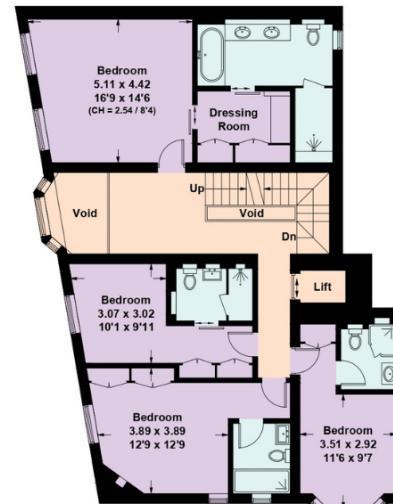




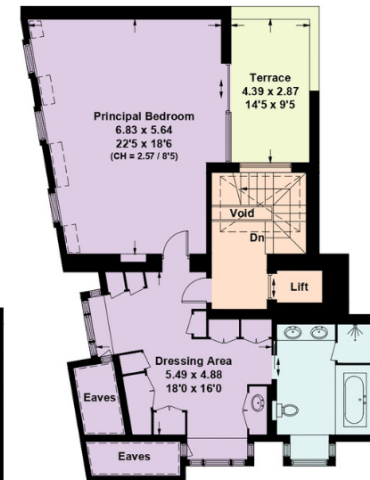
Lower Ground Floor



Ground Floor



First Floor



Second Floor



(Including Garage / Eaves / Excluding Void)
Approximate Gross Internal Area = 464.7 sq m / 5002 sq ft

This plan is for layout guidance only. Not drawn to scale unless stated. Windows and door openings are approximate. Whilst every care is taken in the preparation of this plan, please check all dimensions, shapes and compass bearings before making any decisions reliant upon them. (ID767266)

We would be delighted
to tell you more.

Paul Westwood
020 3371 3132
paul.westwood@knightfrank.com

Knight Frank Knightsbridge
52-54 Sloane Avenue
SW3 3DD

knightfrank.co.uk

Your partners in property

1. Particulars: These particulars are not an offer or contract, nor part of one. You should not rely on statements given by Knight Frank in the particulars, by word of mouth or in writing ("information") as being factually accurate about the property, its condition or its value. Neither Knight Frank nor any joint agent has any authority to make any representations about the property, and accordingly any information given is entirely without responsibility on the part of Knight Frank. 2. Material Information: Please note that the material information is provided to Knight Frank by third parties and is provided here as a guide only. While Knight Frank has taken steps to verify this information, we advise you to confirm the details of any such material information prior to any offer being submitted. If we are informed of changes to this information by the seller or another third party, we will use reasonable endeavours to update this as soon as practical. 3. Photos, Videos etc: The photographs, property videos and virtual viewings etc. show only certain parts of the property as they appeared at the time they were taken. Areas, measurements and distances given are approximate only. 4. Regulations etc: Any reference to alterations to, or use of, any part of the property does not mean that any necessary planning, building regulations or other consent has been obtained. A buyer must find out by inspection or in other ways that these matters have been properly dealt with and that all information is correct. 5. Fixtures and fittings: A list of the fitted carpets, curtains, light fittings and other items fixed to the property which are included in the sale (or may be available by separate negotiation) will be provided by the Seller's Solicitors. 6. VAT: The VAT position relating to the property may change without notice. 7. To find out how we process Personal Data, please refer to our Group Privacy Statement and other notices at <https://www.knightfrank.com/legals/privacy-statement>.

Particulars dated May 2024. Photographs and videos dated May 2024. All information is correct at the time of going to print. Knight Frank is the trading name of Knight Frank LLP. Knight Frank LLP is a limited liability partnership registered in England and Wales with registered number OC305934. Our registered office is at 55 Baker Street, London W1U 8AN. We use the term 'partner' to refer to a member of Knight Frank LLP, or an employee or consultant. A list of members names of Knight Frank LLP may be inspected at our registered office. If you do not want us to contact you further about our services then please contact us by either calling 020 3544 0692, email to marketing.help@knightfrank.com or post to our UK Residential Marketing Manager at our registered office (above) providing your name and address.