



Princes Gate Mews, Knightsbridge SW7



Princes Gate Mews, Knightsbridge SW7

A contemporary style mews house, in a quiet cobbled Knightsbridge cul-de-sac.

This spacious house has been extended to give excellent family accommodation and has the benefit of being arranged over three floors. The modern kitchen and reception room as you enter, enjoy a large picture window overlooking the mews, proving plenty of natural light.

The bedroom with adjacent bathroom arrangement works well on the first floor, for guests, with the second guest bedroom located on the second floor at the rear of the house. The principal bedroom is spacious and has built in storage and enjoys access to the private balcony.



Guide price: £2,400,000

Tenure: Available freehold

Local authority: Royal Borough of Kensington and Chelsea

Council tax band: H




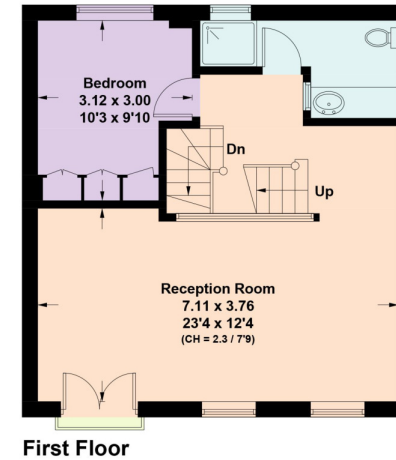
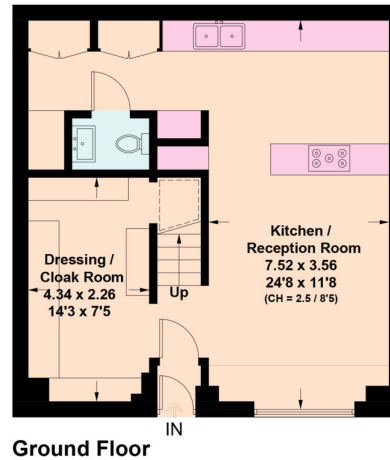
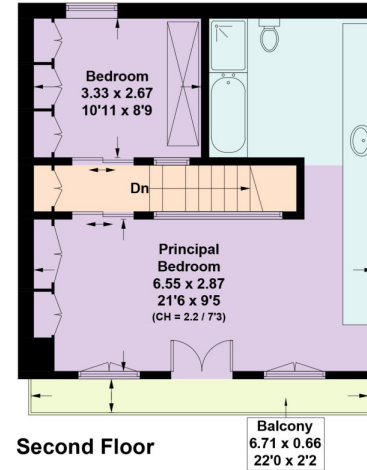


Princes Gate Mews, SW7

Approximate Gross Internal Floor Area
150 sq m / 1615 sq ft

This plan is for guidance only and must not be relied upon as a statement of fact. Attention is drawn to the important notice on the last page of the text of the Particulars.

 = Reduced head height below 1.5m



Knight Frank
 Knightsbridge
 52 - 54 Sloane Avenue
 London
 SW3 3DD
knightfrank.co.uk

We would be delighted to tell you more
James Robinson
 +44 207 861 1771
james.robinson@knightfrank.com



Fixtures and fittings: A list of the fitted carpets, curtains, light fittings and other items fixed to the property which are included in the sale (or may be available by separate negotiation) will be provided by the Seller's Solicitors.
 Important Notice: 1. Particulars: These particulars are not an offer or contract, nor part of one. You should not rely on statements by Knight Frank LLP in the particulars or by word of mouth or in writing ("information") as being factually accurate about the property, its condition or its value. Neither Knight Frank LLP nor any joint agent has any authority to make any representations about the property, and accordingly any information given is entirely without responsibility on the part of the agents, seller(s) or lessor(s). 2. Photos, Videos etc: The photographs, property videos and virtual viewings etc. show only certain parts of the property as they appeared at the time they were taken. Areas, measurements and distances given are approximate only. 3. Regulations etc: Any reference to alterations to, or use of, any part of the property does not mean that any necessary planning, building regulations or other consent has been obtained. A buyer or lessee must find out by inspection or in other ways that these matters have been properly dealt with and that all information is correct. 4. VAT: The VAT position relating to the property may change without notice. 5. To find out how we process Personal Data, please refer to our Group Privacy Statement and other notices at <https://www.knightfrank.com/legals/privacy-statement>.
 Particulars dated October 2023. Photographs and videos dated October 2023.
 Knight Frank is the trading name of Knight Frank LLP. Knight Frank LLP is a limited liability partnership registered in England and Wales with registered number OC305934. Our registered office is at 55 Baker Street, London W1U 8AN where you may look at a list of members' names. If we use the term 'partner' when referring to one of our representatives, that person will either be a member, employee, worker or consultant of Knight Frank LLP and not a partner in a partnership. If you do not want us to contact you further about our services then please contact us by either calling 020 3544 0692, email to marketing.help@knightfrank.com or post to our UK Residential Marketing Manager at our registered office (above) providing your name and address.