

N°48
SLOANE SQUARE

48 SLOANE SQUARE

The property, built in 1904, boasts one of London's best addresses. Today home to many of the world's best fashion houses, this west facing apartment lies at the heart of the unique estate of the Cadogan family and directly overlooks the square bearing the family name of Sir Hans Sloane, notable for bequeathing his collection of natural history and curiosities to the nation paving the way for the foundation of the British Museum.



ENTRANCE LOBBY

The internal walls are covered in mirrors that, along with the ingenious architectural use of Plaster of Paris moulded cornices and skirting boards, make the space appear to have multiplied in size and volume.

DRAWING ROOM

The beautiful panelled walls throughout the room reate a sense of warmth that inspires you to stand by the windows and gaze as the world goes by. Exceptionally crafted niches with a brushed brass inlay wraps the grand fireplace.

A secret door which is part of the wall panelling reveals your guest suites. The beautiful parquet flooring in the original herringbone pattern is simply exquisite. The aged oak wood, treated only with natural oils, gives the silkiest feel when walked on barefoot.

A variety of refined materials have been used and blended together with the greatest attention to detail. From the timber panelling and marble fireplace to the mahogany panelled doors and the splendid brass inlays all features have been cut, fitted and finished by hand.





DINING ROOM

The warm silk wall covering, the bronze doors and brass chandelier, are hand striving to achieve perfection. The spirit of the creator is embodied in each and every object.

It took in excess of 1,000 hours for an artisan in Italy to create the bronze doors and architectural panels used in the elegant dining room. Despite their weight exceeding one tonne, their operation is precise and effortless.

SILK WALL COVERING

Striking emerald green hand-dyed silk covers the walls of the dining room, taking an artist 18 weeks to paint the motif. The bespoke brass chandelier that hangs in the room was designed to sit in perfect harmony with the tree branches featured in the scenery.



THE BEDROOMS

No two bedrooms were designed and created to look the same. All however will offer you a 6 star experience of luxury, relaxation and touch. Choosing your favourite might prove challenging.



OUT OF SIGHT

Design is as much about beauty as it is function. All has been thought of, from where you would want to place your accessories, your belts, your handbags or even your watch winders.



BATHROOMS

Marble and Onyx were chosen to dress the bathrooms and powder room. Each slab was hand picked and selected for its individuality, beautiful colours and reflection of light.



TOUCH OF GOLD

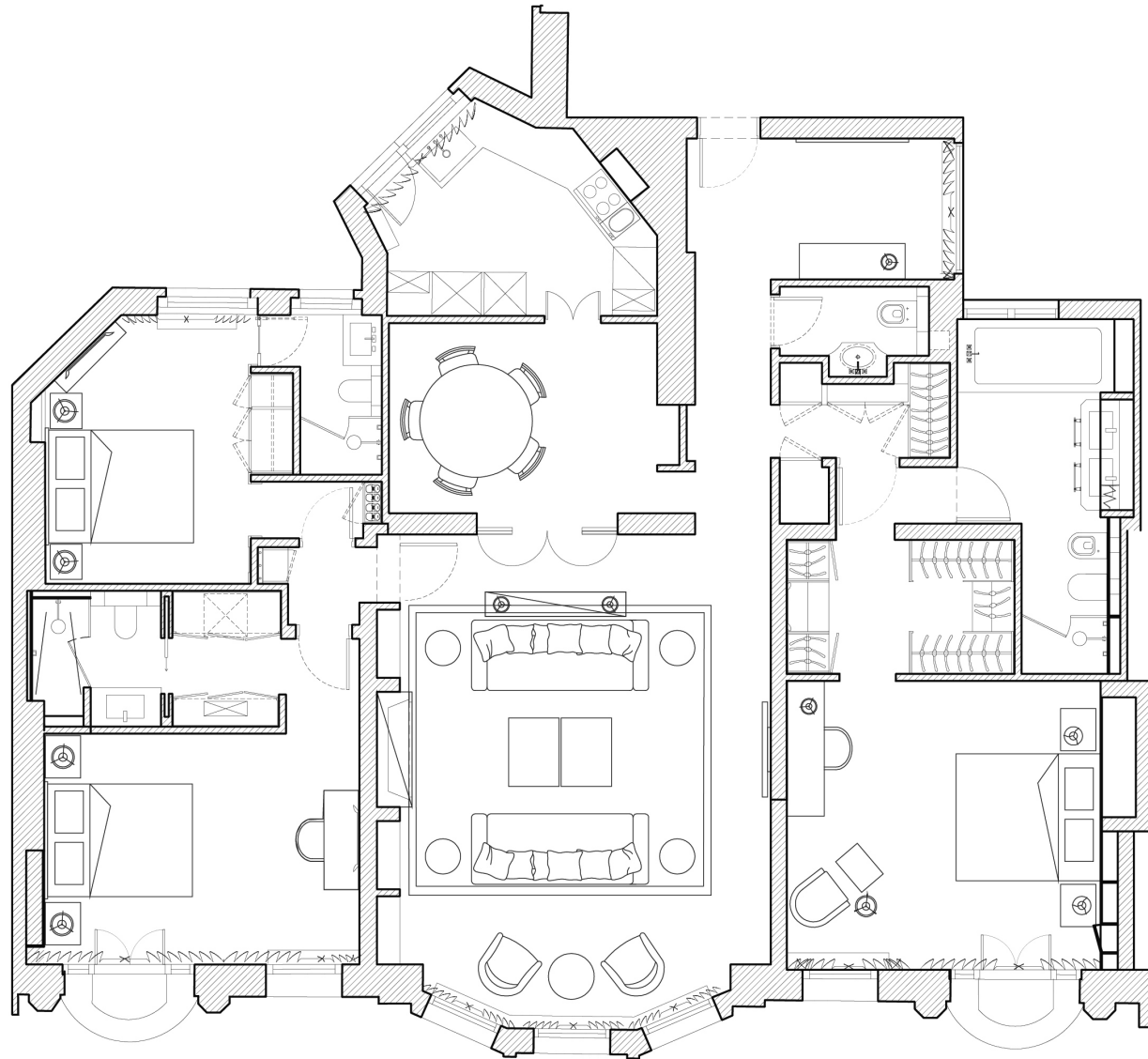
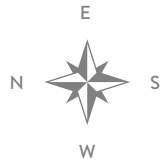
The master en suite has magnificent taps made from 24 carat gold and black hand painted glass from the island of Murano, creating a timeless yet contemporary feel.



PROPERTY FEATURES

- Lutron lighting and window dressing automation
- Crestron control through iPad for Audio Visual system
- Climate control Air Conditioning and continuous fresh air ventilation throughout
- Invisible fire detection systems
- Quadruple low iron glass pane, triple sealed, ultra silent windows
- Sonos and Crestron music system
- Concealed in-wall sub-woofer
- Concealed safe
- Remote controlled gas real flame fireplace
- Gaggenau kitchen appliances





SUMMARY

A three bedroom single level apartment that occupies the second floor of a period building on Sloane Square. With seven windows overlooking the square, the property features a lift, high ceilings, two balconies and boasts exceptional west facing views.

APPROXIMATE GROSS INTERNAL AREA : 1898 SQUARE FEET / 176.3 SQUARE METRES

48SLOANESQUARE.COM