



Donne Place, Chelsea **SW3**



Donne Place, Chelsea, SW3

A charming end of terrace house with excellent accommodation over three floors. The house has been well maintained and presented in good condition throughout. The property comprises a spacious eat-in kitchen, sitting room and under floor wine cellar. On the first floor is the master bedroom and an additional study/bedroom with two bathrooms (one en-suite) and access to the roof terrace. On the third floor are two further bedrooms and a bathroom.



Guide price

£2,950,000

Tenure

Freehold



Location

Ideally located between South Kensington and Sloane Square, Donne Place is within close proximity of both the Brompton Road and the Kings Road. The nearest stations are Sloane Square (approximately 0.6 miles) and South Kensington (approximately 0.3 miles).







Donne Place, SW3

Approximate Floor Area = 141.0 sq m / 1518 sq ft

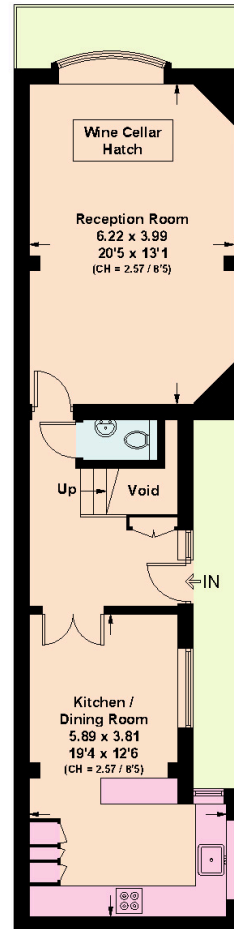
Wine Cellar = 3.0 sq m / 32 sq ft

Total = 144.0 sq m / 1550 sq ft

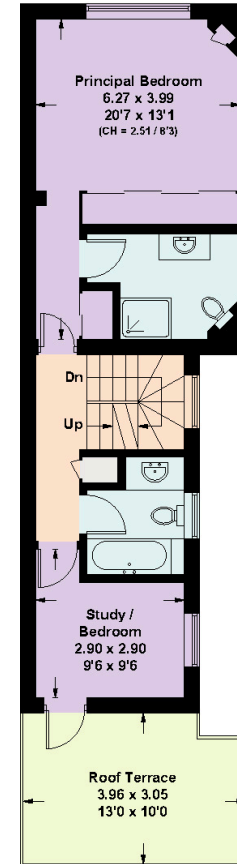
Including Limited Use Area (4.6 sq m / 49 sq ft) & Excluding Void



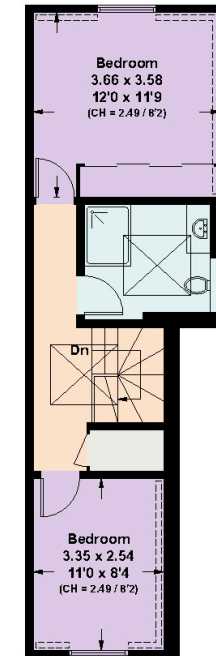
= Reduced head height below 1.5m



Ground Floor



First Floor



Second Floor

Knight Frank
Knightsbridge
52-54 Sloane Avenue
Knightsbridge SW3 3DD

We would be delighted to tell you more

Anna Narizzano

knightfrank.co.uk

020 3826 0639
anna.narizzano@knightfrank.com



Fixtures and fittings: A list of the fitted carpets, curtains, light fittings and other items fixed to the property which are included in the sale (or may be available by separate negotiation) will be provided by the Seller's Solicitors.

Important Notice: 1. Particulars: These particulars are not an offer or contract, nor part of one. You should not rely on statements by Knight Frank LLP in the particulars or by word of mouth or in writing ("information") as being factually accurate about the property, its condition or its value. Neither Knight Frank LLP nor any joint agent has any authority to make any representations about the property, and accordingly any information given is entirely without responsibility on the part of the agents, seller(s) or lessor(s). 2. Photos, Videos etc: The photographs, property videos and virtual viewings etc. show only certain parts of the property as they appeared at the time they were taken. Areas, measurements and distances given are approximate only. 3. Regulations etc: Any reference to alterations to, or use of, any part of the property does not mean that any necessary planning, building regulations or other consent has been obtained. A buyer or lessee must find out by inspection or in other ways that these matters have been properly dealt with and that all information is correct. 4. VAT: The VAT position relating to the property may change without notice. 5. To find out how we process Personal Data, please refer to our Group Privacy Statement and other notices at <https://www.knightfrank.com/legals/privacy-statement>.

Particulars dated May 2022. Photographs and videos dated May 2022.

Knight Frank is the trading name of Knight Frank LLP. Knight Frank LLP is a limited liability partnership registered in England and Wales with registered number OC305934. Our registered office is at 55 Baker Street, London W1U 8AN where you may look at a list of members' names. If we use the term 'partner' when referring to one of our representatives, that person will either be a member, employee, worker or consultant of Knight Frank LLP and not a partner in a partnership. If you do not want us to contact you further about our services then please contact us by either calling 020 3544 0692, email to marketing.help@knightfrank.com or post to our UK Residential Marketing Manager at our registered office (above) providing your name and address.