



Hans Place, Knightsbridge **SW1X**



Hans Place, Knightsbridge

SWIX

Situated in a handsome red brick Victorian building on one of London's most prestigious garden squares, this triplex-style apartment, with a long lease of 113 years, seamlessly blends historical charm with modern sophistication.

As you enter the apartment, a striking staircase creates an impressive entrance, setting the tone for the refined interiors. The grand drawing room boasts commanding proportions, complete with paneling, intricate cornicing, and chandeliers. There are also lovely green views onto the communal gardens, making it a bright and airy space for relaxation and entertaining.



Guide price: £6,950,000

Tenure: Available freehold

Service charge: Approximately £5,000 per annum, reviewed every year, next review due 2025

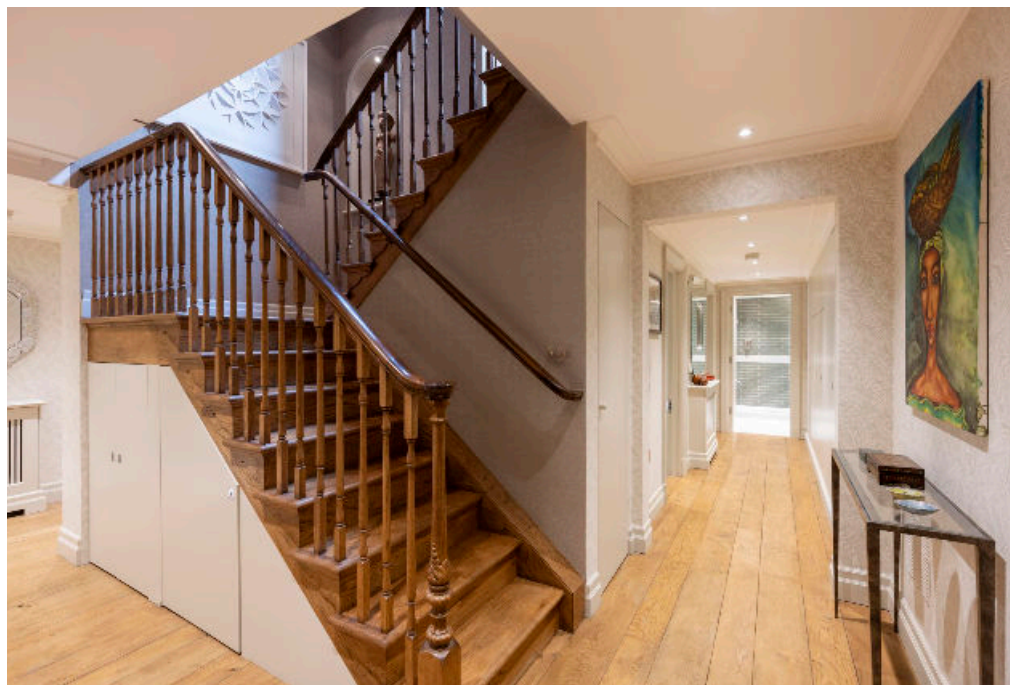
Ground rent: Peppercorn

Local authority: H

Council tax band: Royal Borough of Kensington and Chelsea

Services: Caretaker



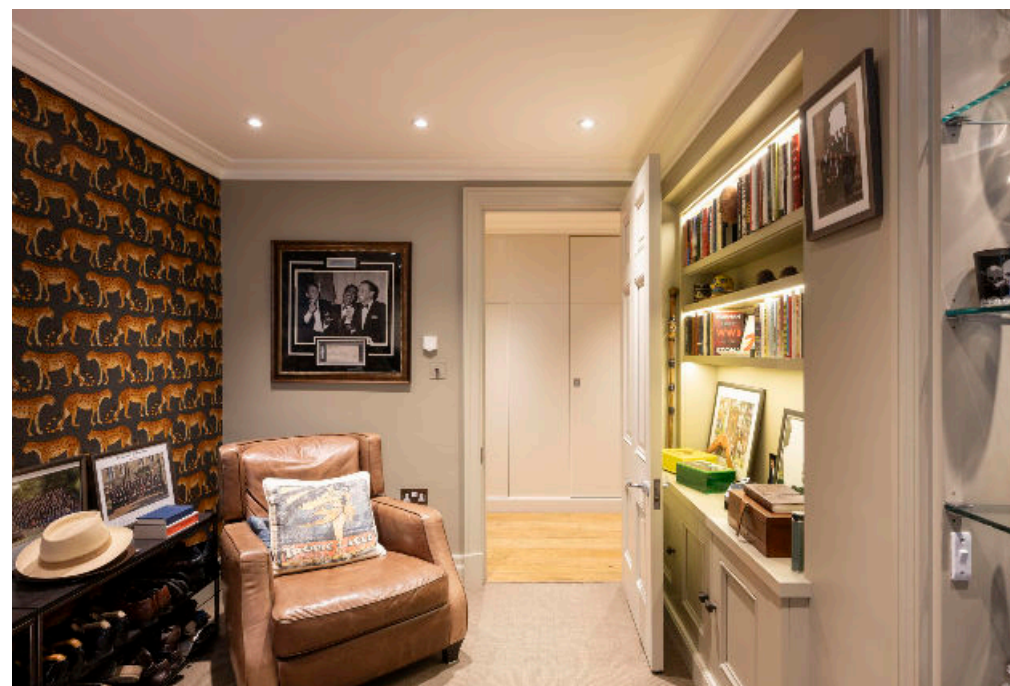


Location

Hans Place is ideally situated in the heart of Knightsbridge, a moments' walk from Harrods and the world class shopping district of Sloane Street.

The property is moments away from the world class hotels, restaurants, luxury boutiques, shops, amenities and museums that the area has to offer. Knightsbridge tube station is within close walking distance.

Outdoor spaces include a charming courtyard garden and access to the highly desirable and peaceful Hans Place communal gardens.







The beautifully designed family kitchen is a highlight of the home, featuring floor-to-ceiling glass doors that open to overlook the private courtyard garden. This inviting space is perfect for casual dining and entertaining, making it the central hub of the apartment.

For added convenience, the apartment includes a separate utility room, fantastic storage throughout, and a guest lavatory. The property also features three fully working gas fires in the drawing room, family room, and kitchen, as well as gas central heating with underfloor heating, ensuring comfort throughout the year.

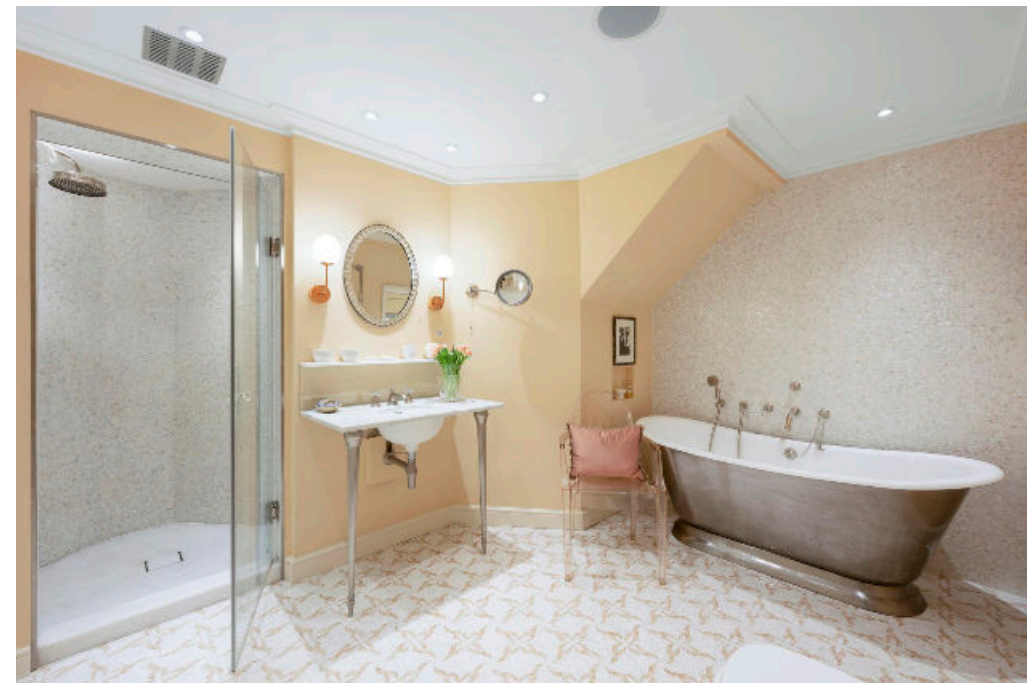
Additional storage vaults, accessible via steps to the side of the building, provide ideal storage for seasonal items and bicycles.





The master bedroom suite is both comfortable and functional, complete with a stunning en suite bathroom featuring a bath and shower, extensive mirrored cupboards, and a walk-in wardrobe. There are two additional double-bedroom suites and a further bedroom.

Upstairs, there is a second sitting room that serves as a versatile family TV/entertainment room with built-in office facilities, providing flexibility. This room is exceptionally quiet, being located on the top floor of the rear extension.

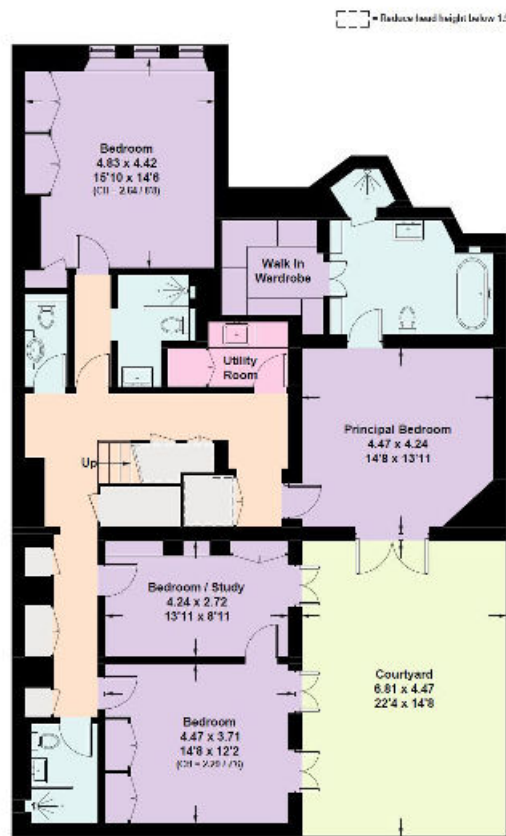




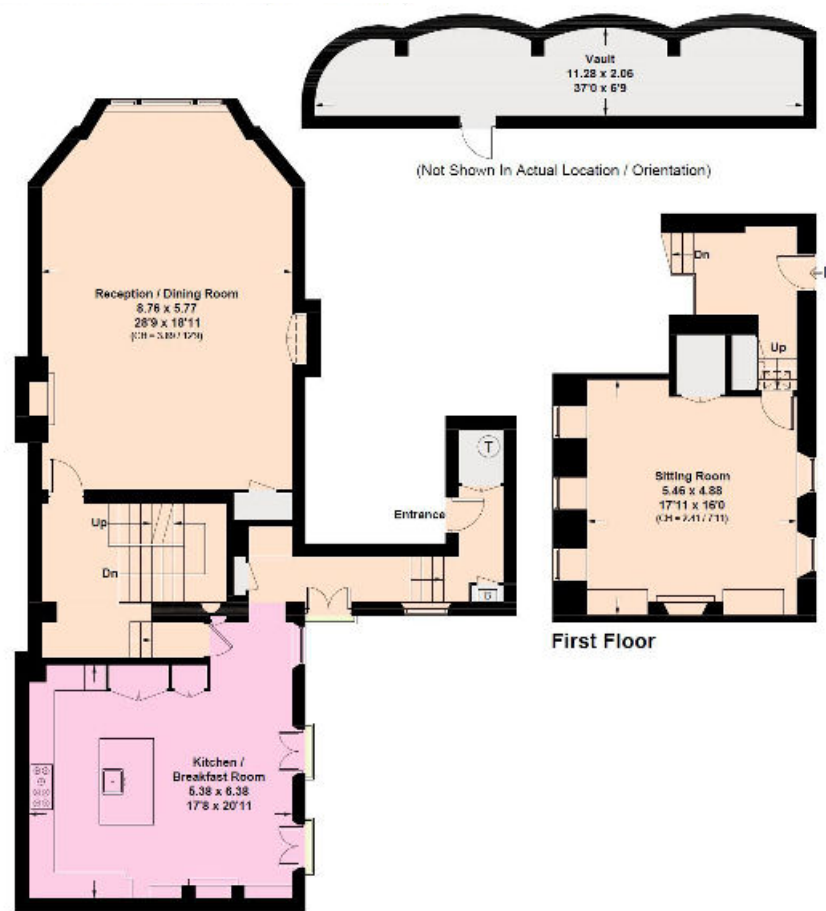
Hans Place, SW1X

**Approximate Gross Internal Floor Area
311.4 sq m / 3352 sq ft**

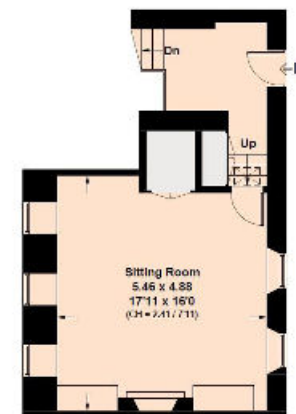
This plan is for guidance only and must not be relied upon as a statement of fact. Attention is drawn to the important notice on the last page of the text of the Particulars.



Lower Ground Floor



Raised Ground Floor



First Floor

Knight Frank
Knightsbridge
52 - 54 Sloane Avenue
London
SW3 3DD
knightfrank.co.uk

We would be delighted to tell you more
Roly Ingleby MacKenzie
+44 20 7881 7721
roly.im@knightfrank.com

Paul Westwood
+44 20 3371 3132
paul.westwood@knightfrank.com



Fixtures and fittings: A list of the fitted carpets, curtains, light fittings and other items fixed to the property which are included in the sale (or may be available by separate negotiation) will be provided by the Seller's Solicitors.

Important Notice: 1. Particulars: These particulars are not an offer or contract, nor part of one. You should not rely on statements by Knight Frank LLP in the particulars or by word of mouth or in writing ("information") as being factually accurate about the property, its condition or its value. Neither Knight Frank LLP nor any joint agent has any authority to make any representations about the property, and accordingly any information given is entirely without responsibility on the part of the agents, seller(s) or lessor(s). 2. Photos, Videos etc: The photographs, property videos and virtual viewings etc. show only certain parts of the property as they appeared at the time they were taken. Areas, measurements and distances given are approximate only. 3. Regulations etc: Any reference to alterations to, or use of, any part of the property does not mean that any necessary planning, building regulations or other consent has been obtained. A buyer or lessee must find out by inspection or in other ways that these matters have been properly dealt with and that all information is correct. 4. VAT: The VAT position relating to the property may change without notice. 5. To find out how we process Personal Data, please refer to our Group Privacy Statement and other notices at <https://www.knightfrank.com/legals/privacy-statement>. Particulars dated May 2024. Photographs and videos dated May 2024.

Knight Frank is the trading name of Knight Frank LLP. Knight Frank LLP is a limited liability partnership registered in England and Wales with registered number OC305934. Our registered office is at 55 Baker Street, London W1U 8AN where you may look at a list of members' names. If we use the term 'partner' when referring to one of our representatives, that person will either be a member, employee, worker or consultant of Knight Frank LLP and not a partner in a partnership. If you do not want us to contact you further about our services then please contact us by either calling 020 3544 0692, email to marketing.help@knightfrank.com or post to our UK Residential Marketing Manager at our registered office (above) providing your name and address.