



Astell Street, Chelsea, London SW3



Astell Street, Chelsea **SW3**

This three-story house on Astell Street blends modern comfort with the timeless appeal of Chelsea. Ideally situated close to Chelsea Green, the property is near an array of boutique shops, delis, and cafes, offering both convenience and charm.

The house features a thoughtfully designed layout that provides generous living space. Upon entry, the reception hall leads to a stylish drawing room with large bay windows that overlook a picturesque west-facing garden. Adjacent to the reception hall is a study, offering a quiet space for work or relaxation.



Guide price: £7,500,000

Tenure: Available freehold

Local authority: Royal Borough of Kensington and Chelsea

Council tax band: H





The lower ground floor houses a functional and well-appointed kitchen, equipped with modern appliances and ample storage. This level also features a well-proportioned family room that opens onto a courtyard patio, creating a seamless transition between indoor and outdoor living. A utility room adds further practicality, and this floor provides access to a large bedroom and bathroom, ideal for guests or separate accommodation.

The property also benefits from a private garage located at the back of the garden, with direct car access around the corner on Britten Street-an invaluable feature in this area.





On the first floor, the principal bedroom features en-suite facilities. Two additional bedrooms and a separate family bathroom complete this level, providing comfortable accommodation for family or guests.

Outside, the front garden is landscaped with mature hedges and plants, ensuring privacy, while the west-facing rear garden provides a tranquil setting for relaxation or entertaining.

This Chelsea home represents an opportunity to acquire a well-located house in one of London's most desirable neighborhoods. With its spacious interior, rear garage, and proximity to Chelsea Green and the Kings Road.

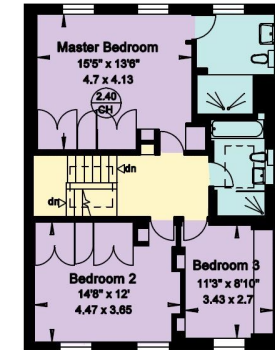
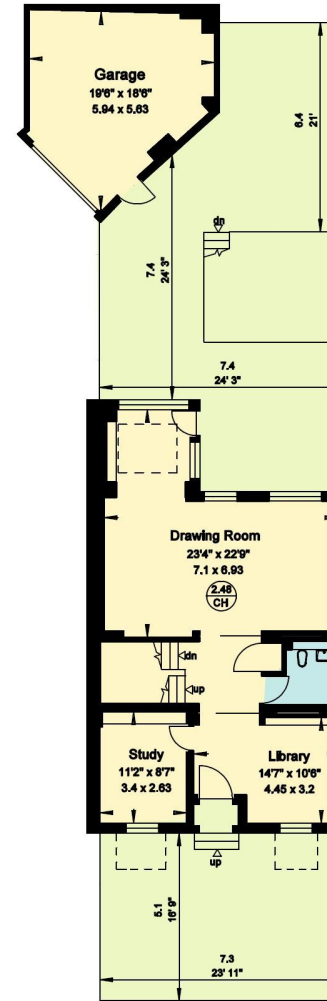
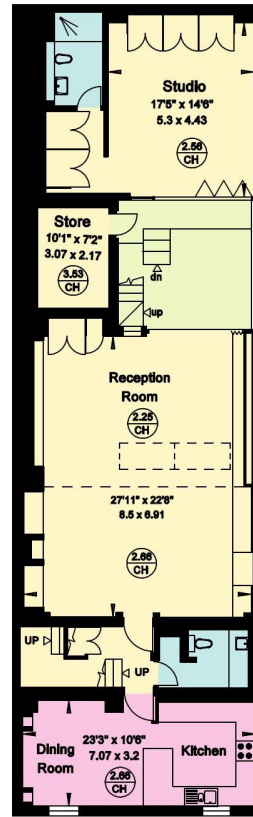




Astell Street, SW3

**Approximate Gross Internal Floor Area
292 sq m / 3147 sq ft**

This plan is for guidance only and must not be relied upon as a statement of fact. Attention is drawn to the important notice on the last page of the text of the Particulars.



Knight Frank
Knightsbridge
 52 - 54 Sloane Avenue
 London
 SW3 3DD
knightfrank.co.uk

We would be delighted to tell you more
Roly Ingleby MacKenzie
 +44 20 7881 7721
roly.im@knightfrank.com



Fixtures and fittings: A list of the fitted carpets, curtains, light fittings and other items fixed to the property which are included in the sale (or may be available by separate negotiation) will be provided by the Seller's Solicitors.
 Important Notice: 1. Particulars: These particulars are not an offer or contract, nor part of one. You should not rely on statements by Knight Frank LLP in the particulars or by word of mouth or in writing ("information") as being factually accurate about the property, its condition or its value. Neither Knight Frank LLP nor any joint agent has any authority to make any representations about the property, and accordingly any information given is entirely without responsibility on the part of the agents, seller(s) or lessor(s). 2. Photos, Videos etc: The photographs, property videos and virtual viewings etc. show only certain parts of the property as they appeared at the time they were taken. Areas, measurements and distances given are approximate only. 3. Regulations etc: Any reference to alterations to, or use of, any part of the property does not mean that any necessary planning, building regulations or other consent has been obtained. A buyer or lessee must find out by inspection or in other ways that these matters have been properly dealt with and that all information is correct. 4. VAT: The VAT position relating to the property may change without notice. 5. To find out how we process Personal Data, please refer to our Group Privacy Statement and other notices at <https://www.knightfrank.com/legals/privacy-statement>.
 Particulars dated August 2024. Photographs and videos dated August 2024.
 Knight Frank is the trading name of Knight Frank LLP. Knight Frank LLP is a limited liability partnership registered in England and Wales with registered number OC305934. Our registered office is at 55 Baker Street, London W1U 8AN where you may look at a list of members' names. If we use the term 'partner' when referring to one of our representatives, that person will either be a member, employee, worker or consultant of Knight Frank LLP and not a partner in a partnership. If you do not want us to contact you further about our services then please contact us by either calling 020 3544 0692, email to marketing.help@knightfrank.com or post to our UK Residential Marketing Manager at our registered office (above) providing your name and address.