



REDESDALE STREET

Chelsea, SW3



A CHARMING HOME IN THE HEART OF CHELSEA

This two-bedroom flat in Chelsea is a beautiful and modern property, offering a combination of stylish living spaces and premium finishes throughout. The apartment boasts a meticulously designed interior, with high-end materials and an immaculate attention to detail.



Local Authority: Royal Borough of Kensington and Chelsea

Council Tax band: G

Tenure: Leasehold: approximately 82 years remaining

Ground rent: Please note, we have been unable to confirm the ground rent and service charges. You should make your own enquiries.

Guide Price: £2,100,000



REDESDALE STREET, CHELSEA SW3

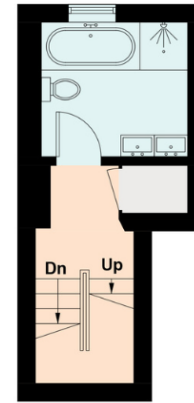
Upon entry, you are met by the study which offers a quiet and private space. On the first floor you are greeted by an open-plan living and dining area, flooded with natural light from large windows. The living space is sleek and contemporary, ideal for both relaxing and entertaining. The kitchen seamlessly integrates into the living area, creating an inviting and functional space.

The two bedrooms on the second floor are generously sized, both offering built-in wardrobes, large windows for natural light, and ample space. The primary bedroom features an en-suite bathroom, while the second bedroom is perfect for guests or as a child's room. One of the standout features of this property is the private roof terrace. With stunning views of the surrounding Chelsea skyline, it is the perfect space for outdoor dining. The entire flat is finished to an immaculate standard, offering a perfect blend of style, comfort, and functionality.

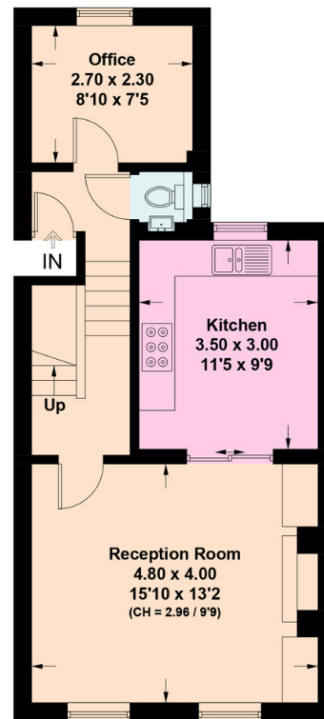




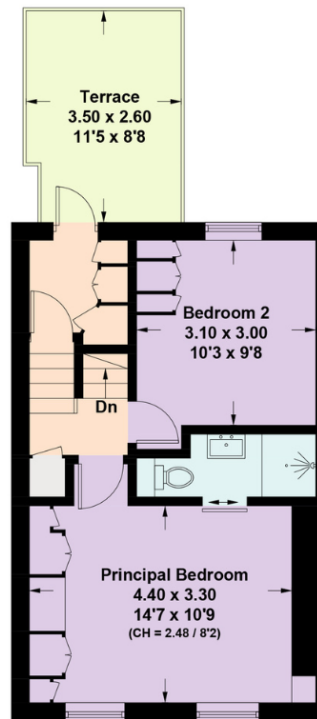




Half Landing



First Floor



Second Floor

Approximate Gross Internal Area = 96.5 sq m / 1039 sq ft

This plan is for layout guidance only. Not drawn to scale unless stated. Windows and door openings are approximate. Whilst every care is taken in the preparation of this plan, please check all dimensions, shapes and compass bearings before making any decisions reliant upon them. (ID767266)

We would be delighted
to tell you more.

Emma Campbell
+44 7976 666 565
Emma.Campbell@knightfrank.com

Knight Frank Knightsbridge
52-54 Sloane Avenue
SW3 3DD

knightfrank.co.uk

Your partners in property

1. Particulars: These particulars are not an offer or contract, nor part of one. You should not rely on statements given by Knight Frank in the particulars, by word of mouth or in writing ("information") as being factually accurate about the property, its condition or its value. Neither Knight Frank nor any joint agent has any authority to make any representations about the property, and accordingly any information given is entirely without responsibility on the part of Knight Frank. 2. Material Information: Please note that the material information is provided to Knight Frank by third parties and is provided here as a guide only. While Knight Frank has taken steps to verify this information, we advise you to confirm the details of any such material information prior to any offer being submitted. If we are informed of changes to this information by the seller or another third party, we will use reasonable endeavours to update this as soon as practical. 3. Photos, Videos etc: The photographs, property videos and virtual viewings etc. show only certain parts of the property as they appeared at the time they were taken. Areas, measurements and distances given are approximate only. 4. Regulations etc: Any reference to alterations to, or use of, any part of the property does not mean that any necessary planning, building regulations or other consent has been obtained. A buyer must find out by inspection or in other ways that these matters have been properly dealt with and that all information is correct. 5. Fixtures and fittings: A list of the fitted carpets, curtains, light fittings and other items fixed to the property which are included in the sale (or may be available by separate negotiation) will be provided by the Seller's Solicitors. 6. VAT: The VAT position relating to the property may change without notice. 7. To find out how we process Personal Data, please refer to our Group Privacy Statement and other notices at <https://www.knightfrank.com/legals/privacy-statement>.

Particulars dated May 2024. Photographs and videos dated May 2024. All information is correct at the time of going to print. Knight Frank is the trading name of Knight Frank LLP. Knight Frank LLP is a limited liability partnership registered in England and Wales with registered number OC305934. Our registered office is at 55 Baker Street, London W1U 8AN. We use the term 'partner' to refer to a member of Knight Frank LLP, or an employee or consultant. A list of members names of Knight Frank LLP may be inspected at our registered office. If you do not want us to contact you further about our services then please contact us by either calling 020 3544 0692, email to marketing.help@knightfrank.com or post to our UK Residential Marketing Manager at our registered office (above) providing your name and address.