



YEOMANRY
MEWS





YEOMANRY MEWS

WELCOME



Located within Stratford upon Avon's historic 'old town', Yeomanry Mews is a short walk to the River Avon and the world renowned Royal Shakespeare Company theatres. Stratford, synonymous as the playwright William Shakespeare's birthplace, attracts many visitors to its theatres, parks, restaurants, and traditional pubs in the medieval town. Numerous hotels, golf clubs, and spa resorts surround the town, catering to visitors and residents.

A unique development of seven houses and three apartments, each designed with high specification and a contemporary finish, considered attention has been paid to the traditional Victorian architecture seen across Old Town and the properties have thoughtfully designed to offer a contemporary take on this classic style. The houses are a mixture of 2,3,4, and 5 bedroom homes, all equipped with private gardens, off street parking and garaging – a rarity in Old Town Stratford. The apartments are a mixture of 1 and 2 bedroom apartments, each also benefitting from off-street parking and a garage.



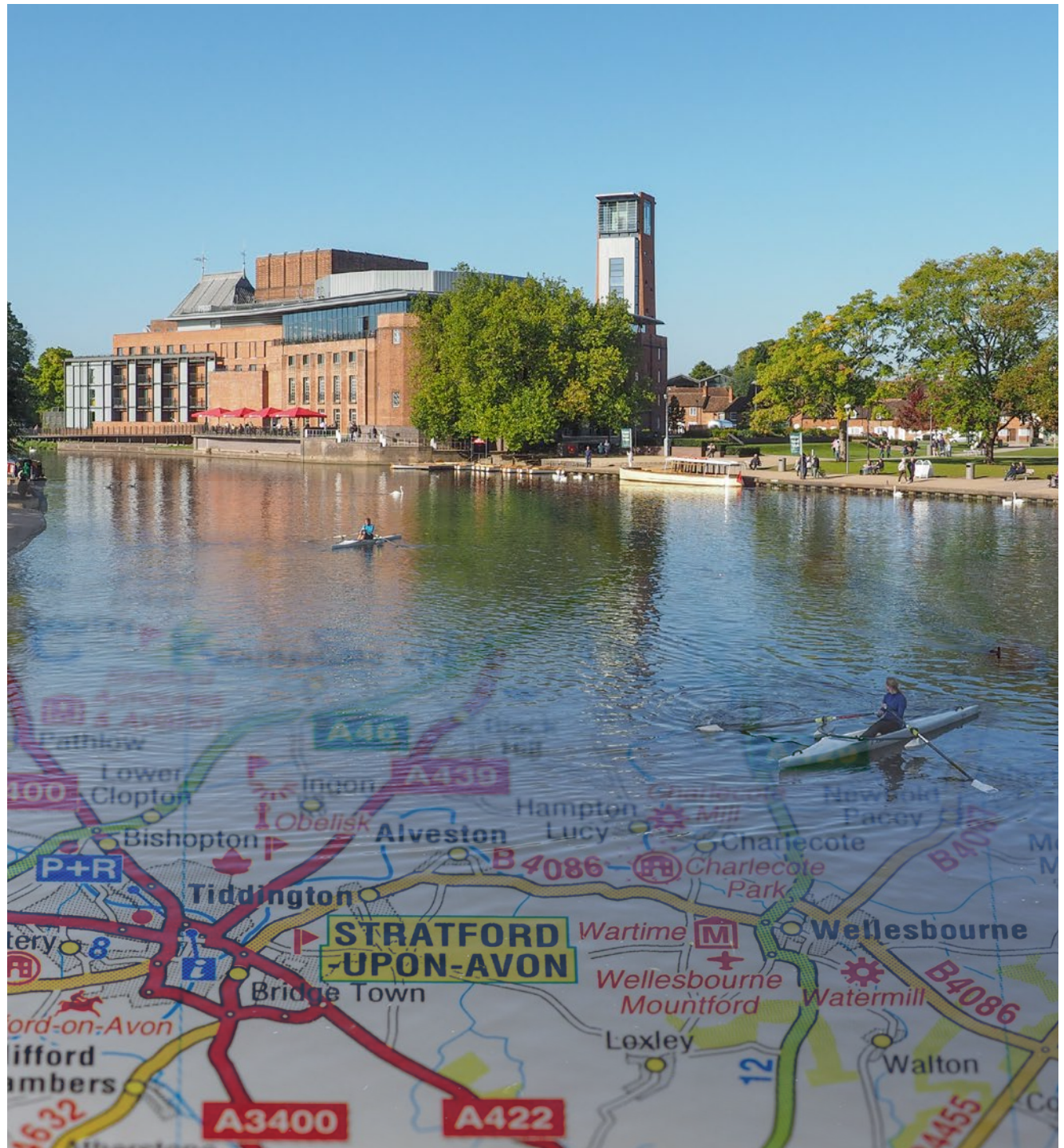
THE LOCATION

Stratford Upon Avon's
historic 'Old Town'

CV37



YEOMANRY
MEWS



A WONDERFUL PLACE TO CALL HOME



Everything you need is just a short stroll away from Yeomanry Mews. Within minutes you can find yourself in the very heart of the town, with its scenic riverbank and vibrant shopping, dining and entertainment facilities.

SCHOOLING

Schooling in Stratford upon Avon and the surrounding area is highly regarded and includes the Stratford boys and girls grammar schools which are both within walking distance of Yeomanry Mews. Stratford Preparatory School is located within Old Town itself and The Croft prep school, situated on the edge of the town has an excellent reputation and feeds into the Warwick independent schools.

CULTURE

Fifteen minutes to the east lies the unspoilt, historic medieval castle town of Warwick and the spa town of Royal Leamington Spa with its fine imposing Georgian architecture, extensive shopping and nightlife.

COMMUTING






For the commuter, Stratford has two railway stations where regular trains run to both Birmingham and London city centres. The A46 by passes the town and provides connections to the national motorway network, with the M40, M42, M5, M6 and M1 within easy reach. Birmingham Airport is also close by and is ideal for international business and holiday travel.

SETTING

Stratford is also blessed with rolling green countryside on its doorstep. The Cotswolds with its beautiful honey coloured stone towns such as Broadway and Chipping Campden are just a short drive away.





1	End Terrace 3 Bed Home	Dwelling – 185 sqm / 1,991 sq ft Garage – 23 sqm / 248 sq ft	 ③	 ③	 ③
2	Mid Terrace 3 Bed Home	Dwelling – 185 sqm / 1,991 sq ft Garage – 23 sqm / 248 sq ft	 ③	 ③	 ③
3	End Terrace 4Bed Home	Dwelling – 246 sqm / 2,648 sq ft Garage – 23 sqm / 248 sq ft	 ④	 ③	 ③
4	Detached 5 Bed Home	Dwelling – 291 sqm / 3,132 sq ft Garage – 46 sqm / 495 sq ft	 ⑤	 ③	 ③
5	Ground Floor Apartment	Dwelling – 119 sqm / 1,281 sq ft Garage – 23 sqm / 248 sq ft	 ②	 ③	 ③
6	1st Floor Apartment	Dwelling – 119 sqm / 1,281 sq ft Garage – 23 sqm / 248 sq ft	 ②	 ③	 ③
7	2nd Floor Apartment	Dwelling – 104 sqm / 1,119 sq ft Garage – 23 sqm / 248 sq ft	 ①	 ③	 ③
8	End Terrace 2 Bed Home	Dwelling – 108 sqm / 1,163 sq ft Garage – 23 sqm / 248 sq ft	 ②	 ③	 ③
9	Mid Terrace 3 Bed Home	Dwelling – 177 sqm / 1,905 sq ft Garage – 23 sqm / 248 sq ft	 ③	 ③	 ③
10	End Terrace 3 Bed Home	Dwelling – 166 sqm / 1,787 sq ft Garage – 23 sqm / 248 sq ft	 ③	 ③	 ③

SITE LAYOUT

A unique development of seven houses and three apartments with a contemporary take on traditional Victorian architecture.



YEOMANRY
MEWS

PLOTS 1, 2 & 3

Floor layouts
and room sizes



1

GROUND FLOOR
95.0 sqm / 1,023 sqft
Garage 22.0 sqm / 237 sqft

ROOMS
Kitchen/Dining
5.5m x 10.2 / 18'1" x 33'5"
Living
3.5m x 6.5m / 11'5" x 21'3"
Utility
3.2m x 2.4m / 10'5" x 7'9"

2

GROUND FLOOR
95.0 sqm / 1,023 sqft
Garage 22.0 sqm / 237 sqft

ROOMS
Kitchen/Dining
5.5m x 10.2 / 18'1" x 33'5"
Living
3.5m x 6.5m / 11'5" x 21'3"
Utility
3.2m x 2.4m / 10'5" x 7'9"

3

GROUND FLOOR
95.0 sqm / 1,023 sqft
Garage 22.0 sqm / 237 sqft

ROOMS
Kitchen/Dining
5.5m x 10.2 / 18'1" x 33'5"
Living
3.5m x 6.5m / 11'5" x 21'3"
Utility
3.2m x 2.4m / 10'5" x 7'9"





1

FIRST FLOOR

87.5 sqm / 942 sqft

ROOMS

Bedroom 1
5.5m x 4.1m / 18'1" x 13'5"
Bedroom 2
3.5m x 4.6m / 11'5" x 15'1"
Bedroom 3
3.2m x 5.8m / 10'5" x 19'0"

2

FIRST FLOOR

87.5 sqm / 942 sqft

ROOMS

Bedroom 1
5.5m x 4.1m / 18'1" x 13'5"
Bedroom 2
3.5m x 4.6m / 11'5" x 15'1"
Bedroom 3
3.2m x 5.8m / 10'5" x 19'0"

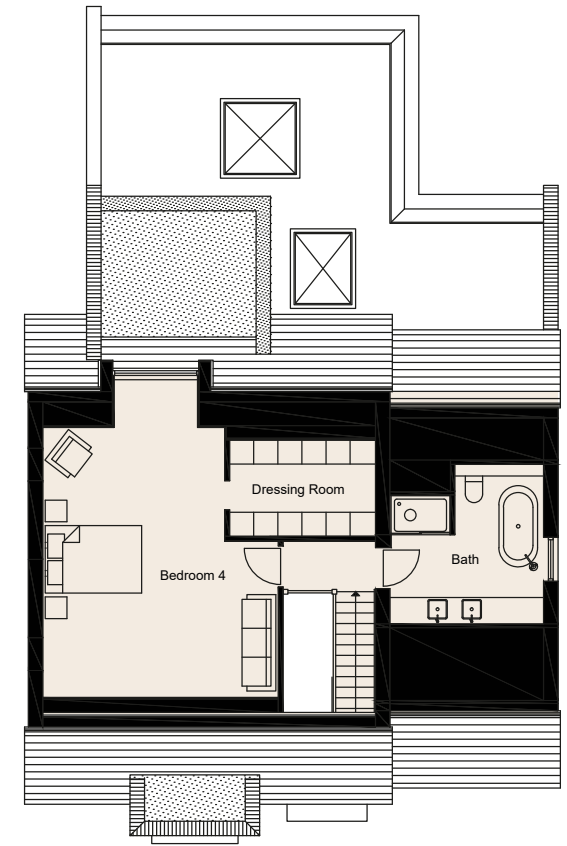
3

FIRST FLOOR

101.0 sqm / 1,087 sqft

ROOMS

Bedroom 1
6.9m x 4.5m / 22'6" x 14'8"
Bedroom 2
4.9m x 4.6m / 16'1" x 15'1"
Bedroom 3
3.4m x 5.8m / 11'2" x 19'0"



3

SECOND FLOOR

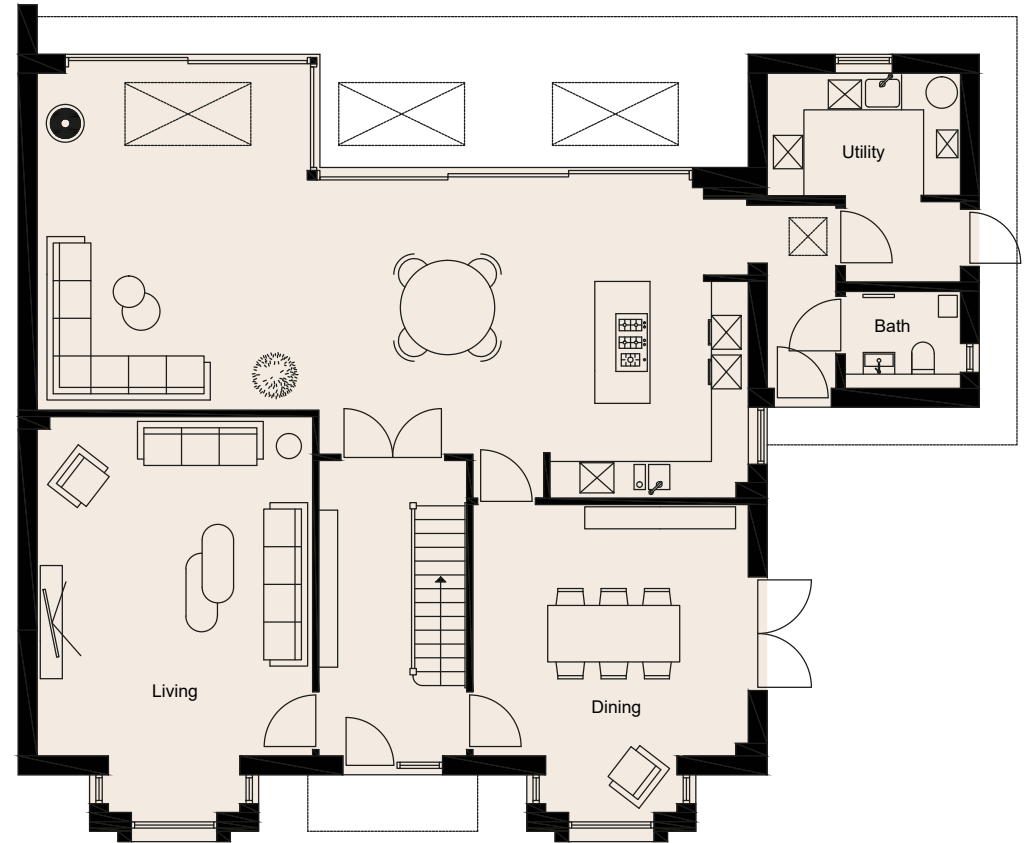
45.0 sqm / 1,087 sqft

ROOMS

Bedroom 4
4.9m x 6.6m / 16'1" x 21'7"
Bathroom
3.2m x 3.3m / 10'5" x 10'8"

PLOT 4

Floor layouts
and room sizes

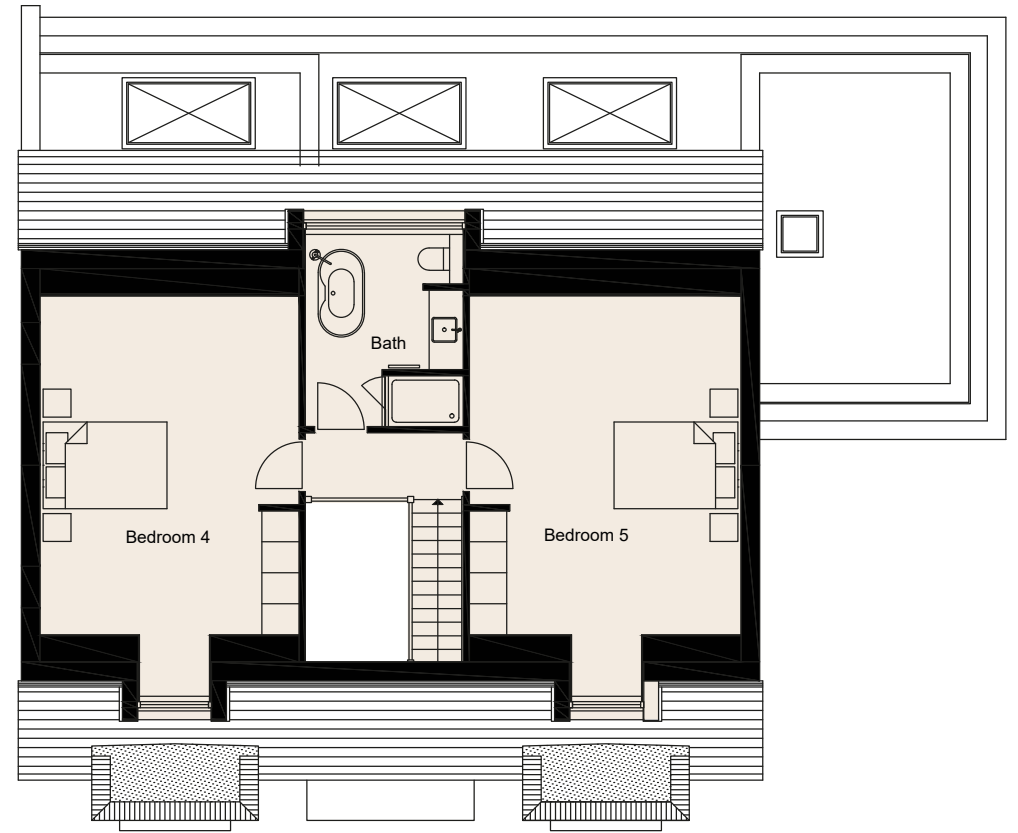
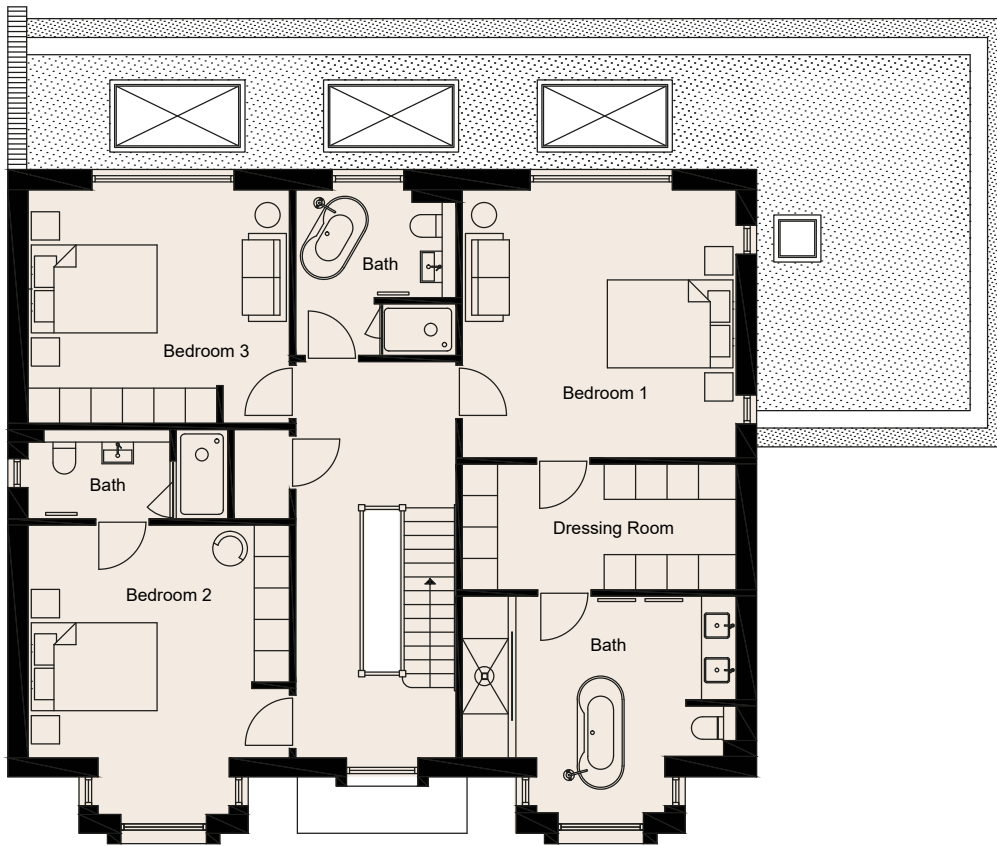


4

GROUND FLOOR
130.0 sqm / 1,400 sqft
Garage 45.0 sqm / 485 sqft

ROOMS
Kitchen/Dining
11.3m x 5.5 / 37'0" x 18'1"
Living
4.4m x 6.5m / 14'4" x 21'3"
Dining
4.4m x 5.1m / 14'4" x 16'7"





4

FIRST FLOOR

105.0 sqm / 1,130 sqft

ROOMS

- Bedroom 1
4.4m x 4.3 / 14'5" x 14'1"
- Bedroom 2
4.2m x 4.8m / 13'8" x 15'8"
- Bedroom 3
4.2m x 3.7m / 13'8" x 12'1"

4

SECOND FLOOR

60.0 sqm / 645 sqft

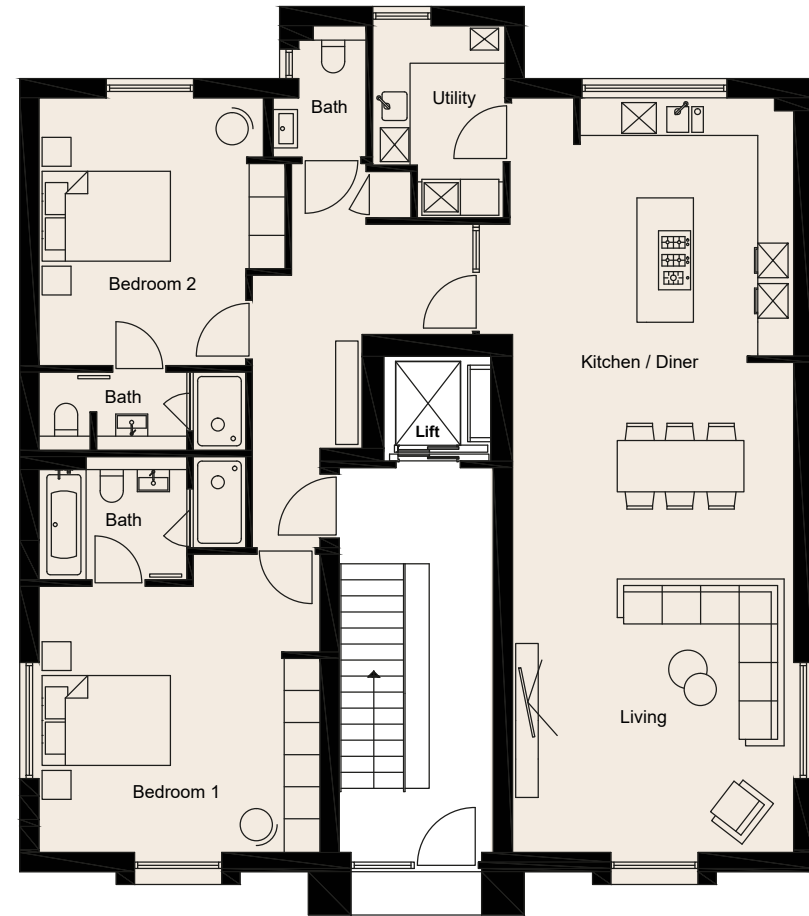
ROOMS

- Bedroom 1
4.2m x 6.5 / 13'8" x 21'3"
- Bedroom 2
4.2m x 6.5m / 13'8" x 21'3"
- Bathroom
2.6m x 3.1m / 8'5" x 10'2"



PLOTS 5, 6 & 7

Floor layouts
and room sizes

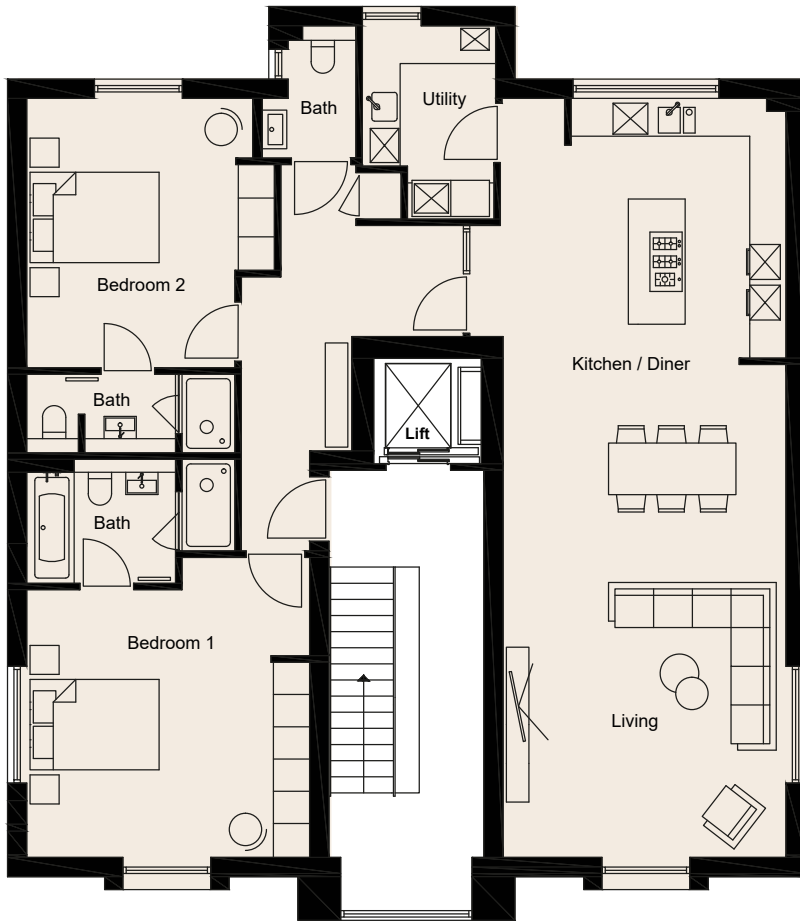


5

GROUND FLOOR
118.0 sqm / 1,270 sqft
Garage 22.0 sqm / 237 sqft

ROOMS
Kitchen/Dining/Living
4.9m x 11.9 / 16'0" x 39'0"
Bedroom 1
4.4m x 4.7m / 14'4" x 15'4"
Bedroom 2
3.5m x 4.3m / 11'5" x 14'1"

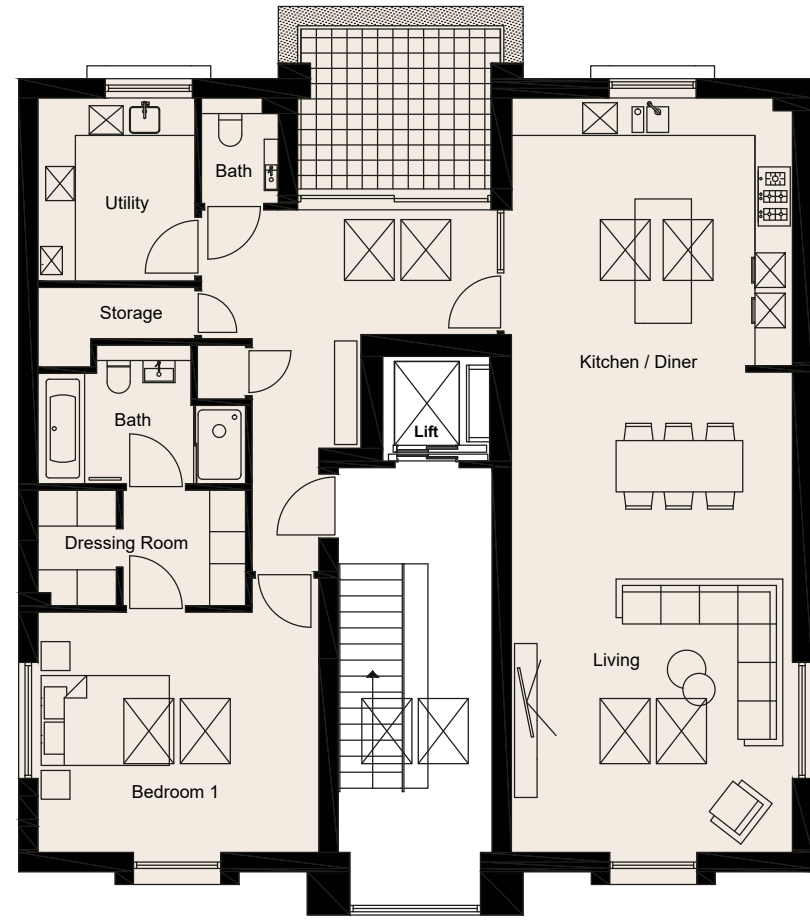




6

FIRST FLOOR
 118.0 sqm / 1,270 sqft
 Garage 22.0 sqm / 237 sqft

ROOMS
 Kitchen/Dining/Living
 4.9m x 11.9 / 16'0" x 39'0"
 Bedroom 1
 4.4m x 4.7m / 14'4" x 15'4"
 Bedroom 2
 3.5m x 4.3m / 11'5" x 14'1"



7

SECOND FLOOR
 109.0 sqm / 1,173 sqft
 Garage 22.0 sqm / 237 sqft

ROOMS
 Kitchen/Dining/Living
 4.5m x 11.9 / 14'8" x 39'0"
 Bedroom 1
 4.4m x 4.3m / 14'4" x 15'4"
 Bedroom 2
 3.5m x 4.3m / 11'5" x 14'1"

PLOTS 8, 9 & 10

Floor layouts
and room sizes



8

GROUND FLOOR
57.0 sqm / 614 sqft
Garage 22.0 sqm / 237 sqft

ROOMS
Kitchen/Dining
5.5m x 6.2m / 18'1" x 20'3"
Living
3.5m x 5.0m / 11'5" x 16'4"

9

GROUND FLOOR
81.0 sqm / 872 sqft
Garage 22.0 sqm / 237 sqft

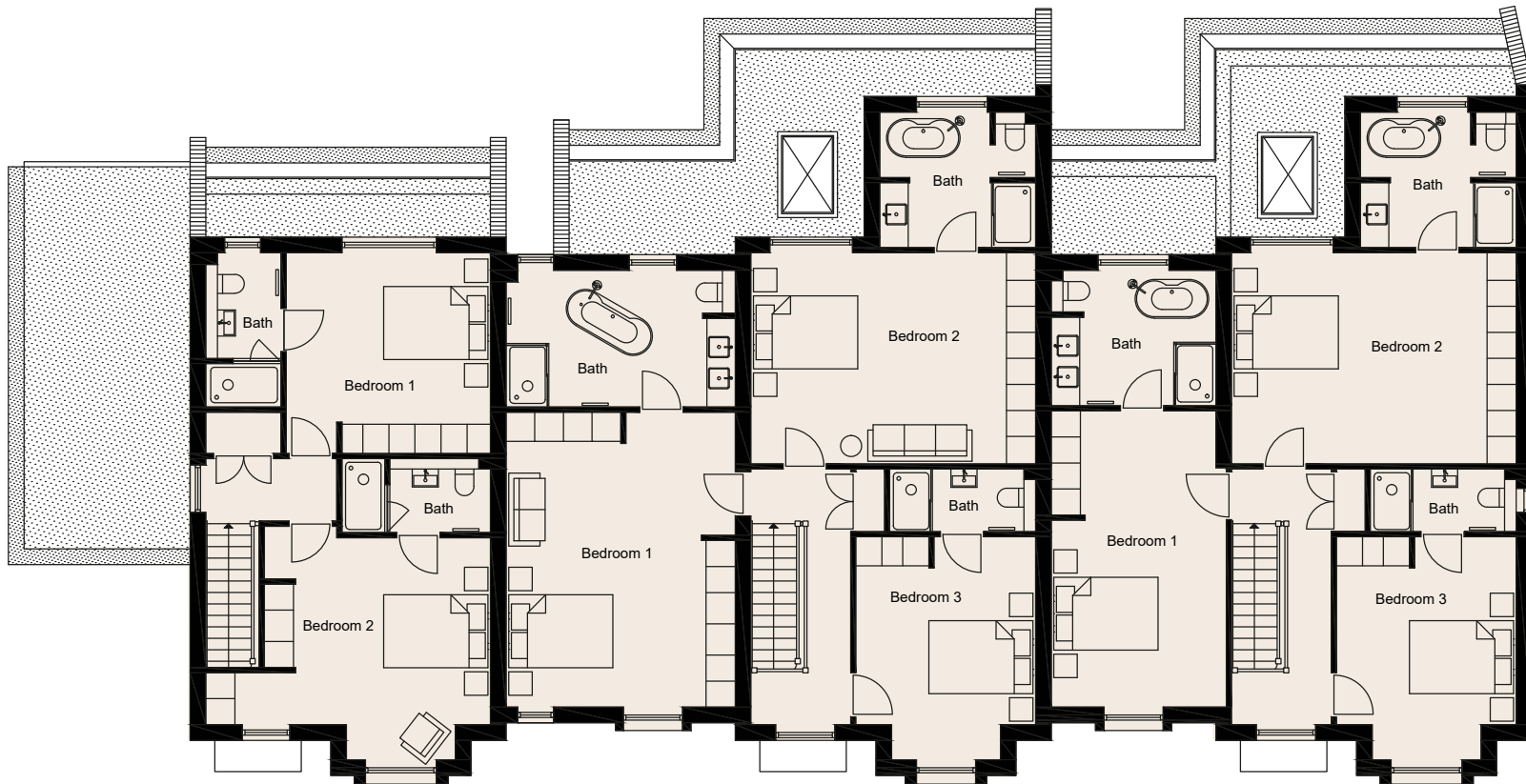
ROOMS
Kitchen/Dining
5.5m x 8.1m / 18'1" x 26'6"
Living
3.5m x 5.5m / 11'5" x 18'1"

10

GROUND FLOOR
81.0 sqm / 872 sqft
Garage 22.0 sqm / 237 sqft

ROOMS
Kitchen/Dining
5.5m x 8.1m / 18'1" x 26'6"
Living
3.5m x 5.5m / 11'5" x 18'1"





8

FIRST FLOOR
51.0 sqm / 549 sqft

ROOMS
Bedroom 1
3.8m x 3.9m / 12'5" x 12'8"
Bedroom 2
5.5m x 4.5m / 18'1" x 14'8"

9

FIRST FLOOR
93.4 sqm / 1,005 sqft

ROOMS
4.4m x 5.8m / 14'4" x 19'0"
Bedroom 2
5.5m x 4.2m / 18'1" x 13'8"
Bedroom 3
3.5m x 4.4m / 11'5" x 14'4"

10

FIRST FLOOR
88.0 sqm / 947 sqft

ROOMS
Bedroom 1
3.4m x 5.8m / 11'1" x 19'0"
Bedroom 2
5.5m x 4.2m / 18'1" x 13'8"
Bedroom 3
3.5m x 4.4m / 11'5" x 14'4"



OUTLINE SPECIFICATION

DECOR

- Light oak engineered wood flooring to living areas and quality carpets to, stairs, landings and bedrooms
- Ceramic floor and wall tiles to bath and utility rooms
- Light and airy neutral colour scheme
- Integrated wardrobes to all bedrooms
- Contemporary satin finish ironmongery

KITCHENS & UTILITY

- MANOR INTERIORS contemporary fitted kitchens with integrated lighting, smart storage & functions
- SILESTONE quartz stone countertops
- BOSCH integrated stainless steel appliances (inc. fan oven, combi microwave, XL gas hob, warming drawer, integrated fridge/freezer dishwasher), Elica extractor hood, Caple wine cooler, integrated washing machine and tumble dryer
- Combined boiling water tap with filtered water

BATHROOMS & EN-SUITES

- Integrated bathroom furniture & storage
- CROSSWATER modern white sanitary ware
- CROSSWATER quality brass fittings (in chrome finish)
- SILESTONE quartz stone countertops
- Large walk-in rain showers
- Contemporary quality floor & wall tiles

HEATING & HOT WATER

- Energy efficient gas condensing boilers
- Efficient under floor heating and contemporary flatpanel radiators to upper floors
- Smart connected thermostatic controls
- Contemporary multi-rail towel rails
- Free-standing contemporary gas stoves with stone hearths (plots 1-4)
- Stone mantel gas fires with stone hearths (plots 8-10)

PARKING & GARDENS

- Garages to all properties (double garage for plot 4) with electric garage doors
- Allocated parking spaces (3+ spaces for houses and 1 space for apartments)
- Visitor parking spaces
- External patio paving and landscaping to houses

LIGHTING & ELECTRICS

- Quality switches, sockets & dimmer controls
- Energy efficient down lighters throughout
- Integrated television reception system to living areas and all bedrooms
- Phone & data sockets to living areas & bedrooms
- Intruder alarms with motion sensors

COMMUNAL AREAS

- Landscaped communal gardens
- Communal cycle store and bin area
- Silent running OTIS lift to apartment block (plots 5-7)

ENVIRONMENTAL CREDENTIALS

- Electric Car Charging points to all properties
- Energy efficient gas condensing boilers
- Multi-room intelligent thermostatic controls
- 'A' rated energy efficient double-glazed windows
- 'A' rated energy efficient fitted appliances

PEACE OF MIND

- 10 year Build warranty
- 1 year manufacturers' fixtures and fittings guarantee
- A multi award winning developer with a proven track record in Warwickshire and beyond

GENERAL

- All properties will be sold freehold or share of freehold for apartments
- A service charge will be payable to cover the costs of estate and site management, maintenance and insurance

OFF-PLAN OPTIONS

Availability dependent on time of property reservation and progress of site.

INCLUDED OPTIONS

KITCHENS

- Choice of 3 finishes for cabinet doors and interiors

BATHROOMS

- Choice of 3 finishes for bathroom cabinet doors

STONE WORKTOPS

- Choice of 3 SILESTONE stone worktop finishes in Kitchens & Bathrooms

FLOORING

- Choice of 3 engineered wood floor and carpet finishes

EXTRA COST OPTIONS (£POA)

BATHROOMS

- Choice of 3 finishes for taps, mixers, showers heads, wastes, flush plates (in chrome, satin steel, satin brass and matt black)

KITCHENS

- Upgraded and additional kitchen appliances

BLINDS

- Automated or manual window blinds

SPEAKERS

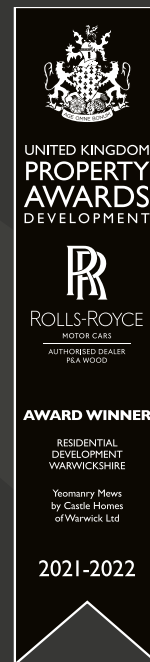
- Integrated ceiling speakers with SONOS amplifiers, to one or multiple rooms

The information within this brochure is indicative and is intended to act as a guide to the finished product. Whilst every effort is made to ensure that the information is correct, necessary amendments to the specification and layout may be carried out without notice. Imagery and computer generated images are indicative and should be viewed as a guide only.

CASTLE HOMES

OF WARWICK

As a residential developer, Castle Homes of Warwick strives to meet the aspirations and expectations of our clients by creating design-led residential homes of a superior standard to mainstream house builders. This philosophy, combined with being a family-run enterprise and our local focus, allows us to stay close to our clients and ensure that our developments become personal homes.





For more information

01789 269 853 | www.knightfrank.co.uk

Bridgeway House, Bridgeway, Stratford-upon-Avon CV37 6YX

Fixtures and fittings: A list of the fitted carpets, curtains, light fittings and other items fixed to the property which are included in the sale (or may be available by separate negotiation) will be provided by the Seller's Solicitors.

Important Notice: 1. Particulars: These particulars are not an offer or contract, nor part of one. You should not rely on statements by Knight Frank LLP in the particulars or by word of mouth or in writing ("information") as being factually accurate about the property, its condition or its value. Neither Knight Frank LLP nor any joint agent has any authority to make any representations about the property, and accordingly any information given is entirely without responsibility on the part of the agents, seller(s) or lessor(s). 2. Photos, Videos etc: The photographs, property videos and virtual viewings etc. show only certain parts of the property as they appeared at the time they were taken. Areas, measurements and distances given are approximate only. 3. Regulations etc: Any reference to alterations to, or use of, any part of the property does not mean that any necessary planning, building regulations or other consent has been obtained. A buyer or lessee must find out by inspection or in other ways that these matters have been properly dealt with and that all information is correct. 4. VAT: The VAT position relating to the property may change without notice. 5. To find out how we process Personal Data, please refer to our Group Privacy Statement and other notices at <https://www.knightfrank.com/legals/privacy-statement>.

Particulars dated July 2022. Computer generated images, photographs and videos dated July 2022.

Knight Frank is the trading name of Knight Frank LLP. Knight Frank LLP is a limited liability partnership registered in England and Wales with registered number OC305934. Our registered office is at 55 Baker Street, London W1U 8AN where you may look at a list of members' names. If we use the term 'partner' when referring to one of our representatives, that person will either be a member, employee, worker or consultant of Knight Frank LLP and not a partner in a partnership. If you do not want us to contact you further about our services then please contact us by either calling 020 3544 0692, email to marketing.help@knightfrank.com or post to our UK Residential Marketing Manager at our registered office (above) providing your name and address.