



Queen's Gate Place Mews, South Kensington SW7



Queen's Gate Place Mews, South Kensington SW7

An impeccably presented two-bedroom apartment, situated on the first and second floor within a period mews house, in Queens Gate Place Mews SW7. This unique residence showcases modern comfort across two well-designed floors, offering an ideal blend of practicality and style.

Entering the property on the ground floor, a private entrance hallway leads to a staircase that ascends to the accommodation level, which contains a bright and generously proportioned reception room with a Juliet balcony. The room's open-plan design, combined with its impressive size, offers ample space for both living and entertaining.



Asking price: £2,100,000

Tenure: Share of freehold plus leasehold, approximately 987 years remaining

Local authority: Royal Borough of Kensington & Chelsea

Council tax band: G

Adjacent to the reception area is a well-appointed, beautifully designed kitchen, which is equipped with integrated appliances, ample cabinetry and plenty of worktop space. Every detail has been carefully considered to ensure both functionality and aesthetic appeal. The principal bedroom is discreetly positioned upstairs and is served by extensive wardrobe storage and a sleek en suite. An additional good-sized double bedroom with integrated storage is adjacent to the principal suite and a separate, conveniently located shower room is accessible via the hallway. Both of the bedrooms further benefit from comfort cooling and heating to ensure year-round comfort.

Queen's Gate Place Mews is a charming, quiet, cobbled street located in the heart of South Kensington, within close proximity to the green open spaces of Hyde Park. The area offers a blend of classic London mews charm with modern amenities. Gloucester Road and South Kensington Underground Stations are the closest tube stations. Surrounded by local boutiques and world-class museums such as the Natural History Museum and the V&A.

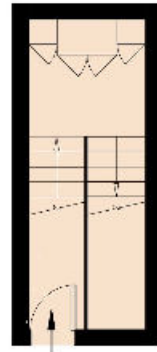


Queen's Gate Place Mews SW7

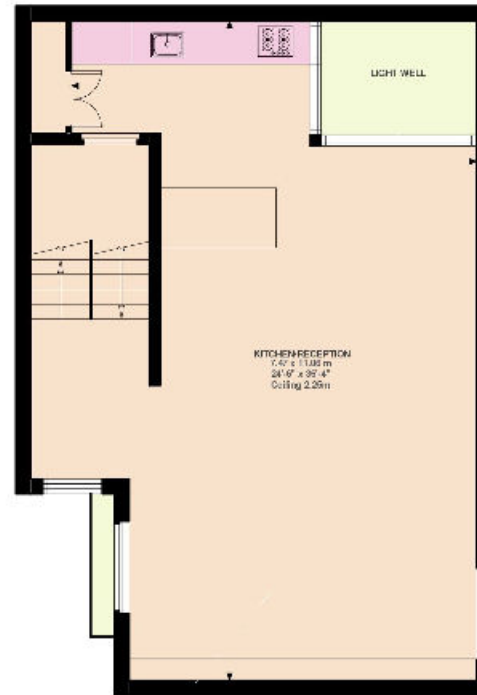
Approximate Gross Internal Floor Area

147.14 sq m / 1,584 sq ft

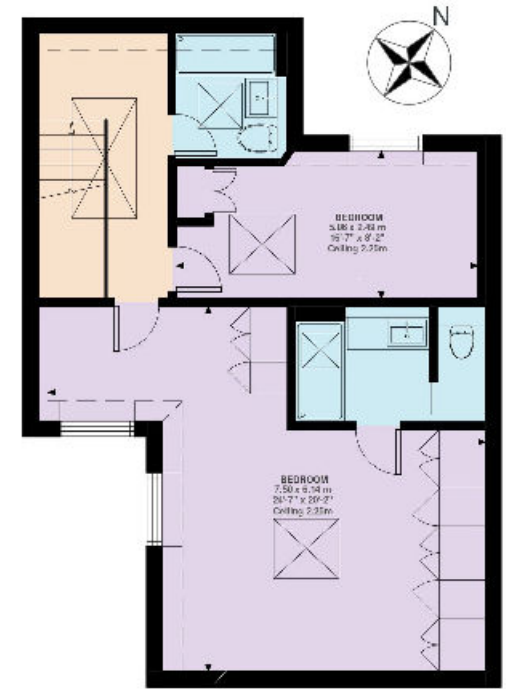
This plan is for guidance only and must not be relied upon as a statement of fact. Attention is drawn to the important notice on the last page of the text of the Particulars.



Entrance To First Floor
111 ft²



First Floor
767 ft²



Second Floor
706 ft²

Knight Frank

South Kensington Sales

160 Old Brompton Road

London

SW5 0BA

[knightfrank.co.uk](https://www.knightfrank.co.uk)

I would be delighted to tell you more

Jordanna Mancina

020 3892 3573

jordanna.mancina@knightfrank.com

Fixtures and fittings: A list of the fitted carpets, curtains, light fittings and other items fixed to the property which are included in the sale (or may be available by separate negotiation) will be provided by the Seller's Solicitors.

Important Notice: 1. Particulars: These particulars are not an offer or contract, nor part of one. You should not rely on statements by Knight Frank LLP in the particulars or by word of mouth or in writing ("information") as being factually accurate about the property, its condition or its value. Neither Knight Frank LLP nor any joint agent has any authority to make any representations about the property, and accordingly any information given is entirely without responsibility on the part of the agents, seller(s) or lessor(s). 2. Photos, Videos etc: The photographs, property videos and virtual viewings etc. show only certain parts of the property as they appeared at the time they were taken. Areas, measurements and distances given are approximate only. 3. Regulations etc: Any reference to alterations to, or use of, any part of the property does not mean that any necessary planning, building regulations or other consent has been obtained. A buyer or lessee must find out by inspection or in other ways that these matters have been properly dealt with and that all information is correct. 4. VAT: The VAT position relating to the property may change without notice. 5. To find out how we process Personal Data, please refer to our Group Privacy Statement and other notices at <https://www.knightfrank.com/legals/privacy-statement>.

Particulars dated September 2024. Photographs and videos dated September 2024.

All information is correct at the time of going to print. Knight Frank is the trading name of Knight Frank LLP. Knight Frank LLP is a limited liability partnership registered in England and Wales with registered number OC305934. Our registered office is at 55 Baker Street, London W1U 8AN. We use the term 'partner' to refer to a member of Knight Frank LLP, or an employee or consultant. A list of members names of Knight Frank LLP may be inspected at our registered office. If you do not want us to contact you further about our services then please contact us by either calling 020 3544 0692, email to marketing.help@knightfrank.com or post to our UK Residential Marketing Manager at our registered office (above) providing your name and address.

