

Harrington Gardens, London SW7



Harrington Gardens, London SW7

An impressive and immaculately presented three bedroom, two-bathroom duplex apartment situated on the raised ground and lower ground floor of a handsome period conversion on Harrington Gardens, SW7. This is an exciting opportunity to acquire an exceptional family residence with an excellent blend of living and entertaining space.

Entering on the raised ground floor, an inviting hallway leads through to a south-facing reception room, characterised by a striking ceiling height, hardwood floors and a feature fireplace.



Guide price: £2,250,000

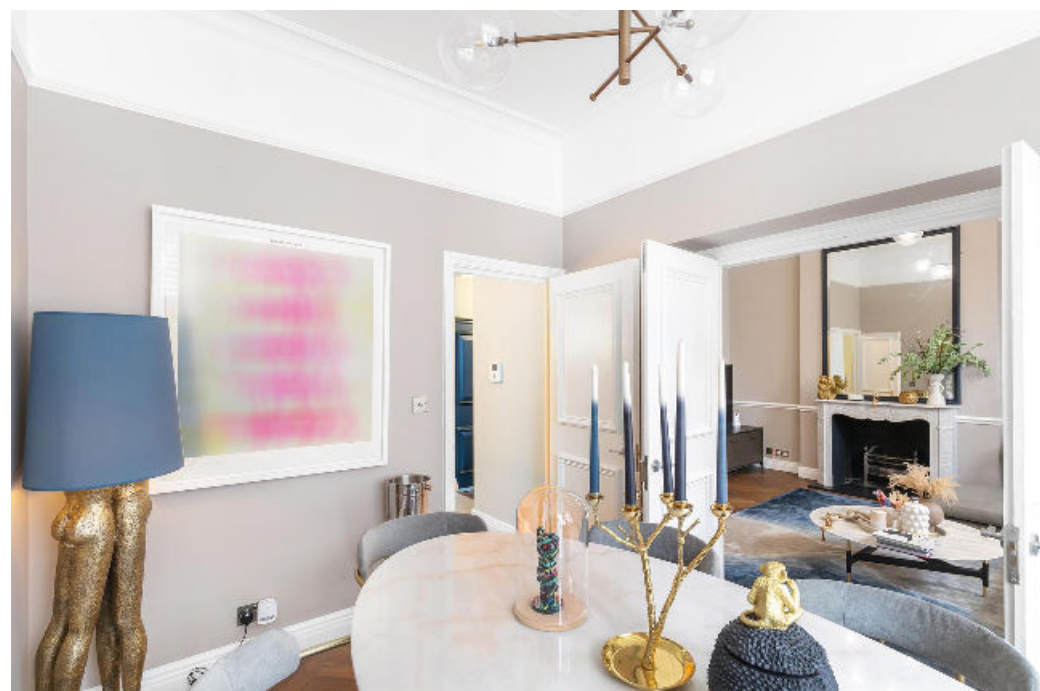
Tenure: Leasehold: approximately 88 years remaining

Service charge: approximately £4,163 per annum, reviewed every year, next review due 2025

Ground rent: approximately £375 per annum, reviewed every year, next review due 2025

Local authority: Royal Borough of Kensington & Chelsea

Council tax band: G



The dining room is positioned just off the reception room and has double doors, allowing the space to be closed off while entertaining. A modern fitted kitchen is positioned towards the rear of the ground floor and features granite worktops, Miele appliances, and plenty of storage space. A guest WC completes this floor.

Downstairs, there is an impressive principal bedroom complete with plenty of fitted wardrobes and an en suite shower room, two further double bedrooms and a beautifully appointed family bathroom. From this floor, there is access to two private courtyards.

The property further benefits from access to a large loft space for storage and access to Harrington Gardens (upon application).



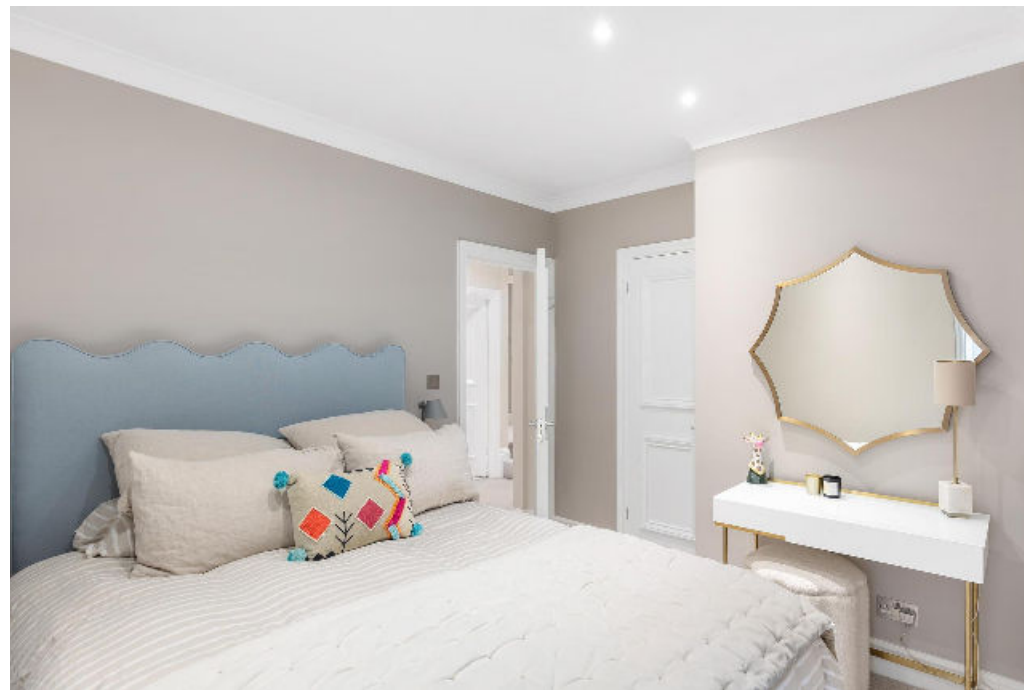
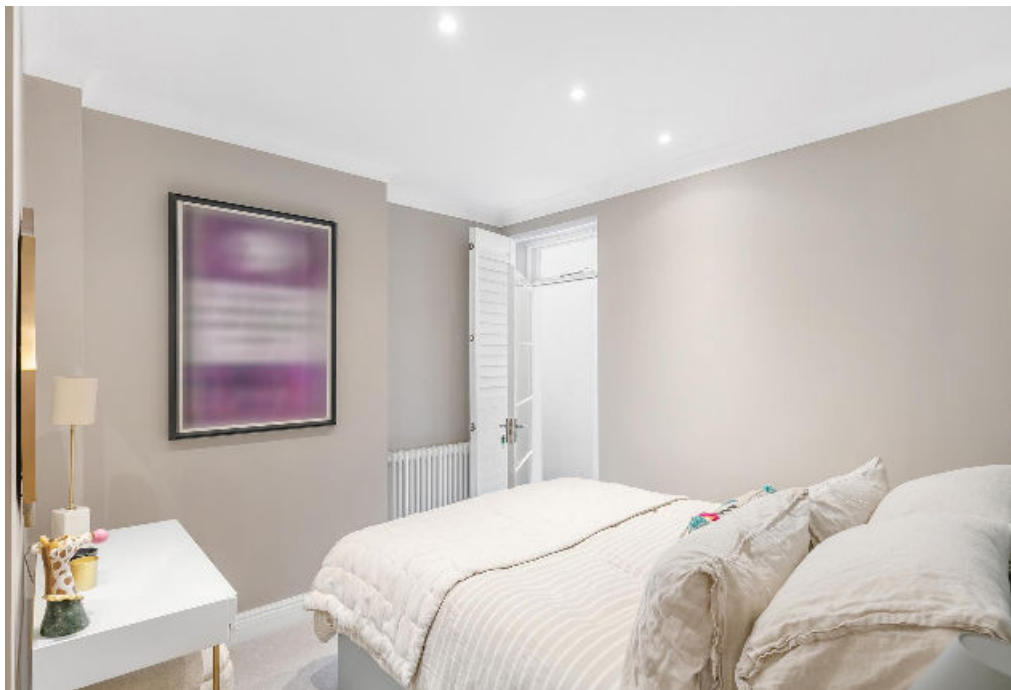
Location

Harrington Gardens enjoys a prime location with easy access to many shops, bars, and restaurants. Situated in close proximity to Gloucester Road underground station, with its convenient connections to the Circle, District, and Piccadilly lines, commuting and exploring the city with ease. The station is approximately 0.2 miles away, providing seamless access to all that London has to offer.

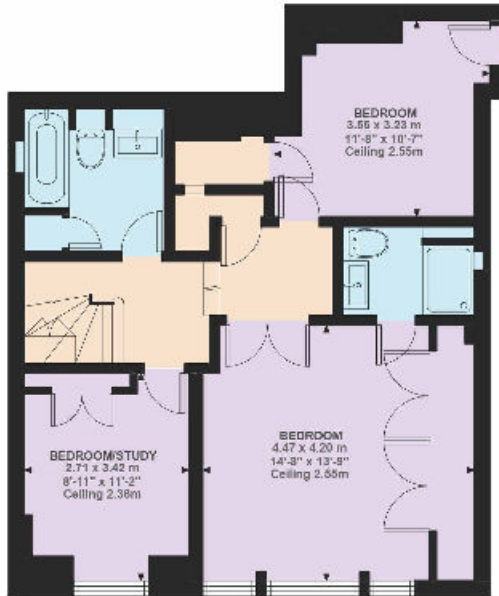




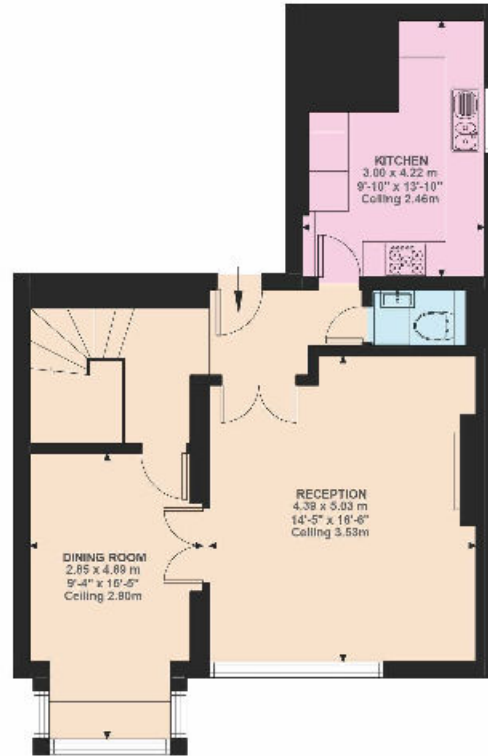
HARRINGTON GARDENS SW3



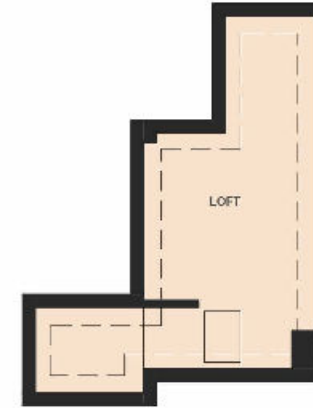
Harrington Gardens, SW7
 Approximate Gross Internal Area
124.79 SQ.M / 1343 SQ.FT
 (EXCLUDING LOFT)
 LOFT 16.45 SQ.M / 177 SQ.FT
INCLUSIVE TOTAL AREA 141.24 SQ.M / 1520 SQ.FT



Lower Ground Floor
670 ft²



Ground Floor
673 ft²



This plan is for guidance only and must not be relied upon as a statement of fact. Attention is drawn to the important notice on the last page of the text of the Particulars.

Knight Frank
 South Kensington
 160 Old Brompton Road
 London SW5 0BA

I would be delighted to tell you more

Jordanna Mancina
 020 3892 3573

[knightfrank.co.uk](https://www.knightfrank.co.uk)

jordanna.mancina@knightfrank.com



Fixtures and fittings: A list of the fitted carpets, curtains, light fittings and other items fixed to the property which are included in the sale (or may be available by separate negotiation) will be provided by the Seller's Solicitors.
 Important Notice: 1. Particulars: These particulars are not an offer or contract, nor part of one. You should not rely on statements by Knight Frank LLP in the particulars or by word of mouth or in writing ("information") as being factually accurate about the property, its condition or its value. Neither Knight Frank LLP nor any joint agent has any authority to make any representations about the property, and accordingly any information given is entirely without responsibility on the part of the agents, seller(s) or lessor(s). 2. Photos, Videos etc: The photographs, property videos and virtual viewings etc. show only certain parts of the property as they appeared at the time they were taken. Areas, measurements and distances given are approximate only. 3. Regulations etc: Any reference to alterations to, or use of, any part of the property does not mean that any necessary planning, building regulations or other consent has been obtained. A buyer or lessee must find out by inspection or in other ways that these matters have been properly dealt with and that all information is correct. 4. VAT: The VAT position relating to the property may change without notice. 5. To find out how we process Personal Data, please refer to our Group Privacy Statement and other notices at <https://www.knightfrank.com/legals/privacy-statement>.
 Particulars dated May 2024. Photographs and videos dated May 2024.
 All information is correct at the time of going to print. Knight Frank is the trading name of Knight Frank LLP. Knight Frank LLP is a limited liability partnership registered in England and Wales with registered number OC305934. Our registered office is at 55 Baker Street, London W1U 8AN. We use the term 'partner' to refer to a member of Knight Frank LLP, or an employee or consultant. A list of members names of Knight Frank LLP may be inspected at our registered office. If you do not want us to contact you further about our services then please contact us by either calling 020 3544 0692, email to marketing.help@knightfrank.com or post to our UK Residential Marketing Manager at our registered office (above) providing your name and address.