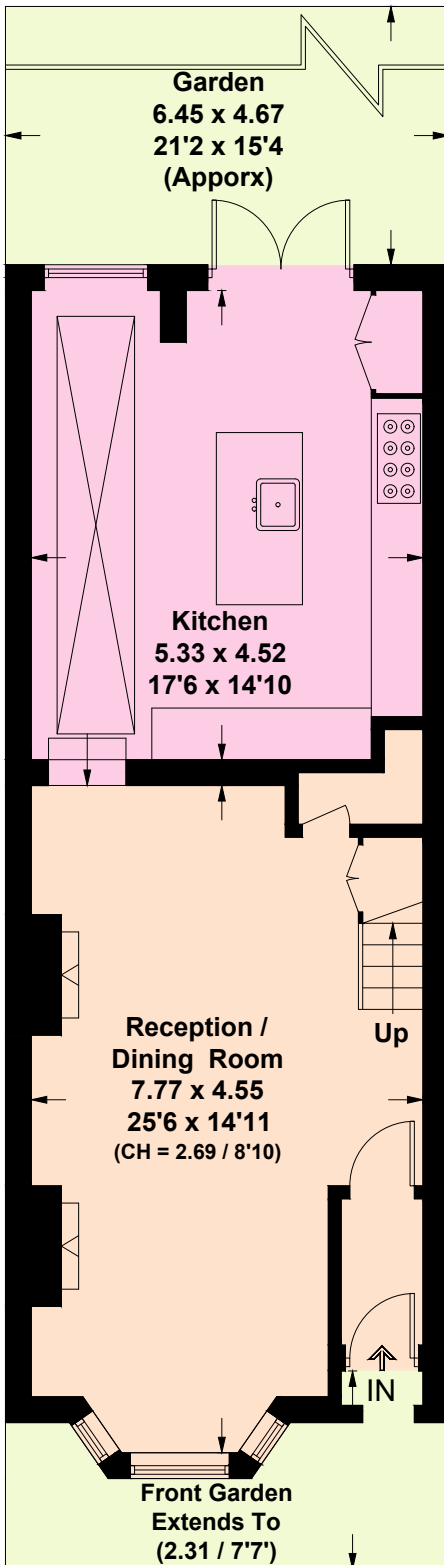
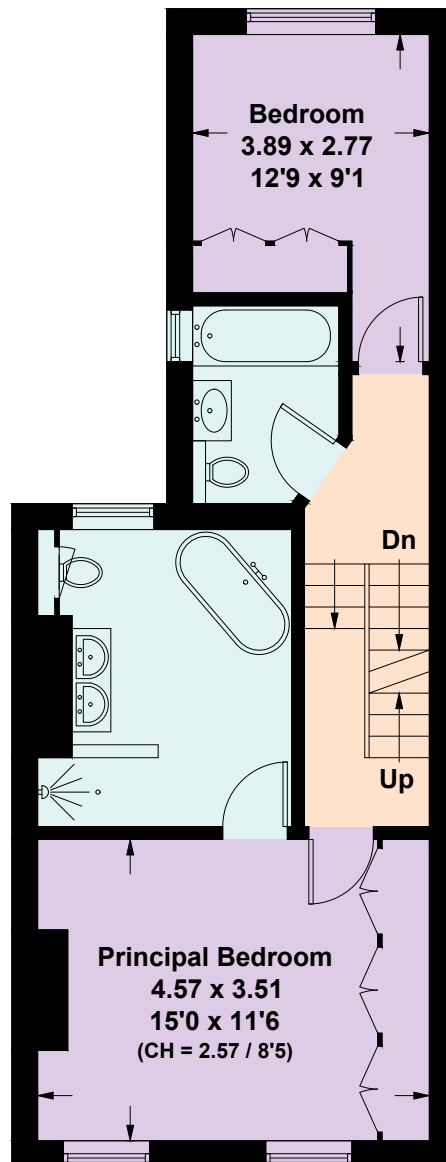


Treadgold Street, W11

Approximate Gross Internal Area = 140.7 sq m / 1514 sq ft
Including Limited Use Area (10.5 sq m / 113 sq ft)

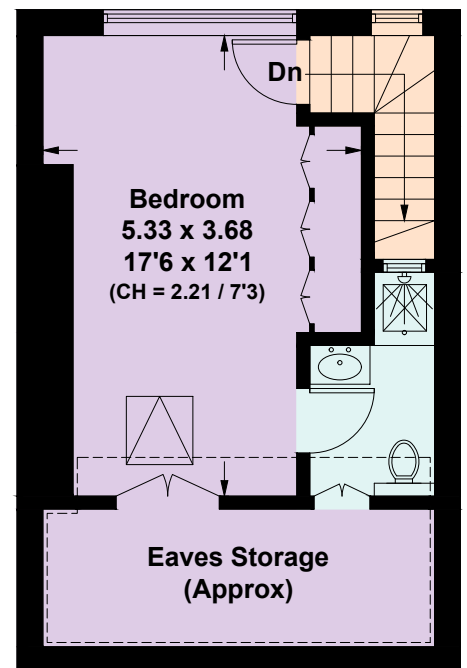


Ground Floor



First Floor

[] = Reduced head height below 1.5m



Second Floor



This plan is for layout guidance only. Not drawn to scale unless stated. Windows and door openings are approximate. Whilst every care is taken in the preparation of this plan, please check all dimensions, shapes and compass bearings before making any decisions reliant upon them. (ID1196573)