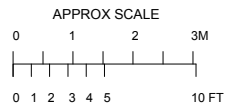


# 3 Chestnut Walk Stratford-upon-Avon

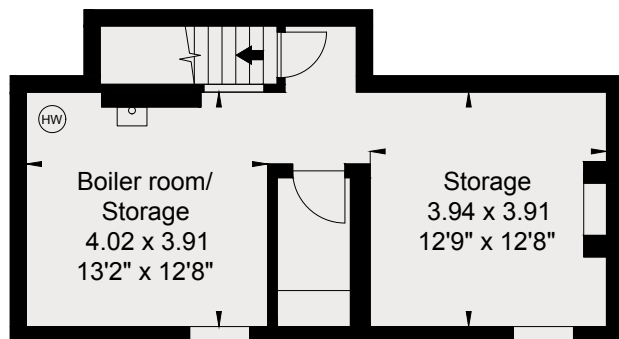


APPROXIMATE GROSS INTERNAL FLOOR AREA:

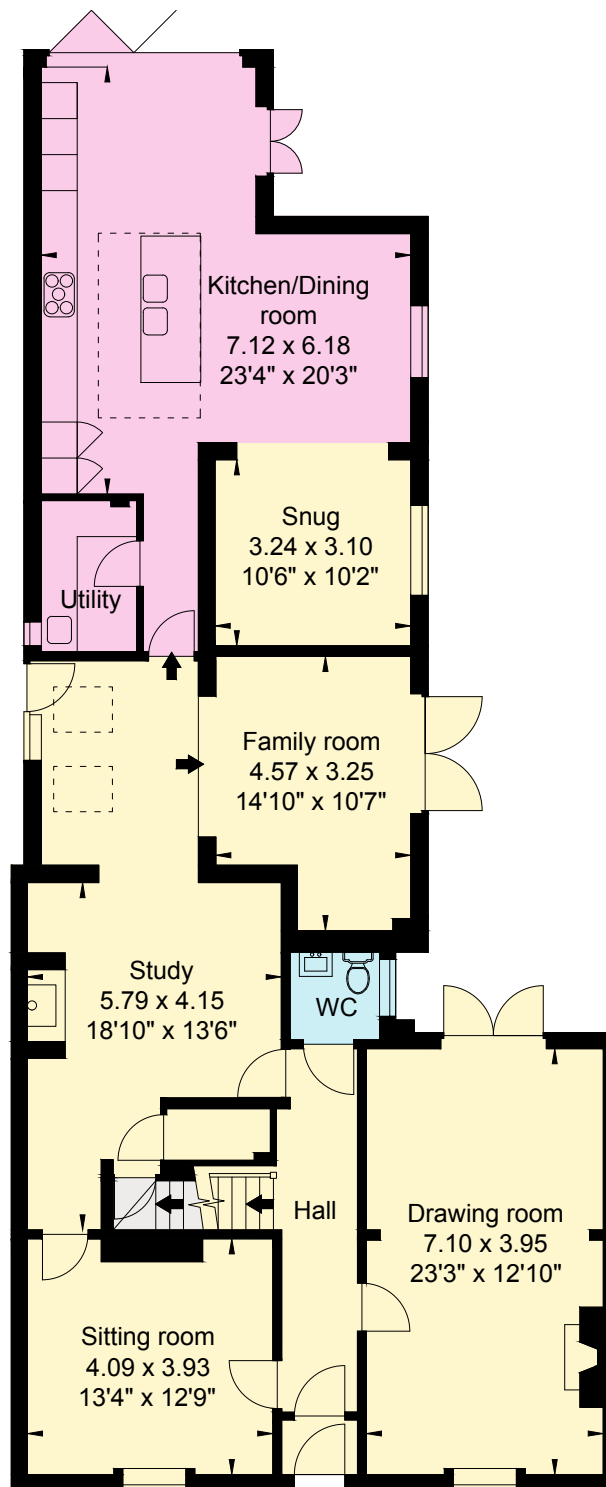
312 sq m (3,360 sq ft)

© Cotswold Plans Ltd ma/16266

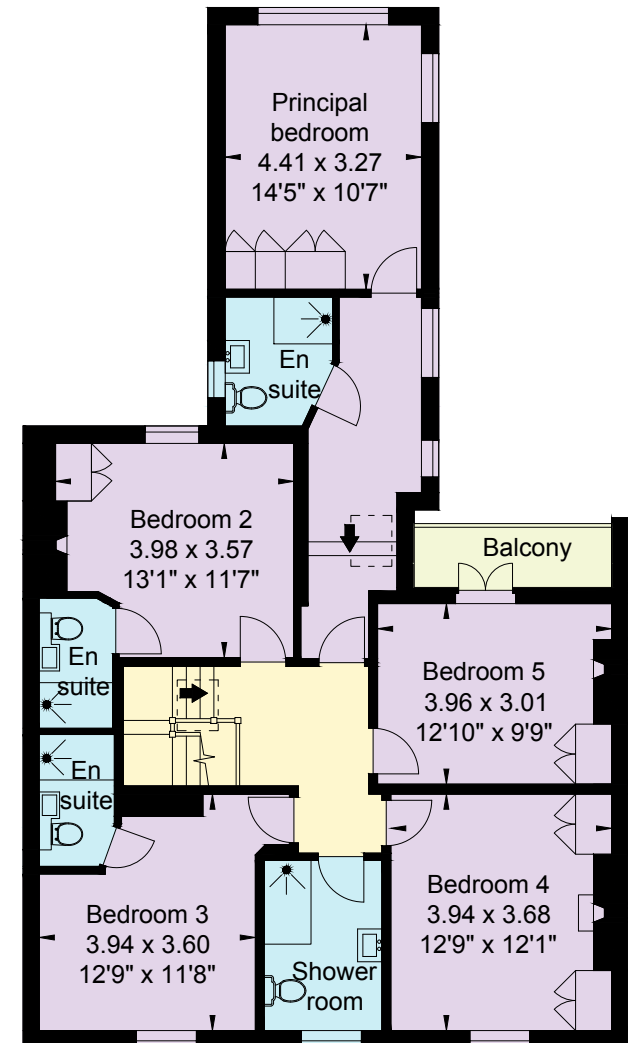
This plan is for guidance only and must not be relied upon as a statement of fact. Attention is drawn to the Important Notice on the last page of text of the Particulars.



Cellar



Ground Floor



First Floor