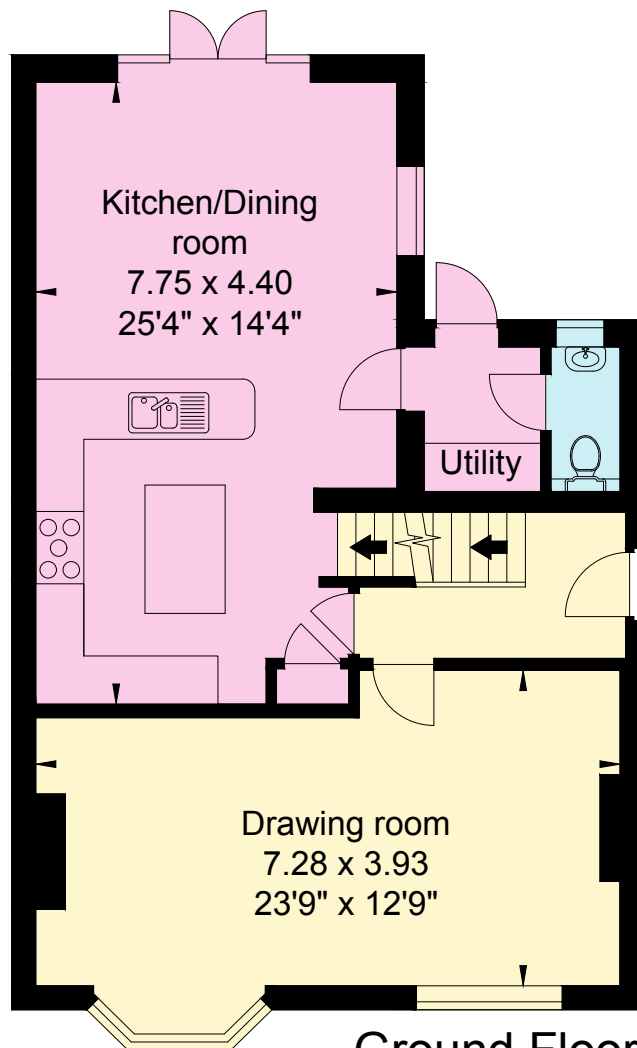
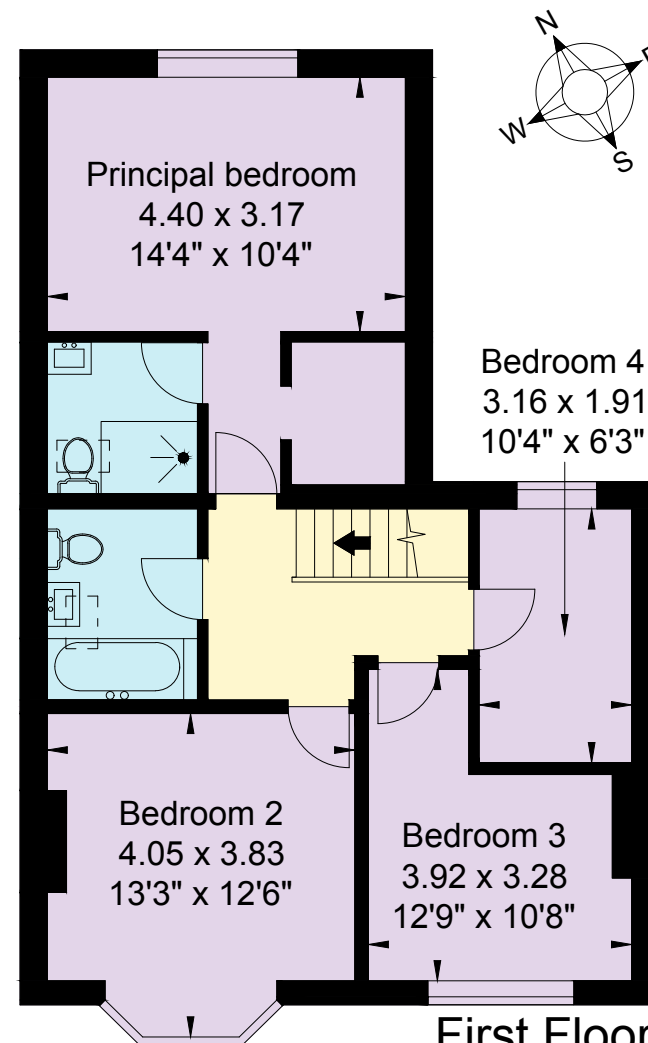


Lower Ground Floor



Ground Floor



First Floor

APPROX SCALE



This plan is for guidance only and must not be relied upon as a statement of fact. Attention is drawn to the Important Notice on the last page of text of the Particulars.

147 Evesham Road  
Stratford upon Avon

APPROXIMATE GROSS INTERNAL FLOOR AREA:  
161 sq m (1,733 sq ft)  
© Cotswold Plans Ltd ma/16358