



FOSSE LODGE, STOW-ON-THE-WOLD



DETACHED COTSWOLD STONE HOME WITH GLORIOUS VIEWS.

Fosse Lodge enjoys one of the most sought-after positions in town, just moments from the amenities of the market square, yet tucked away in a peaceful setting with stunning Cotswold views.



5



4



3

EPC

C

Local Authority: Cotswold District Council

Council Tax band: G

Tenure: Freehold

Services: mains gas, water, drainage and electricity



LOCATION

Stow-on-the-Wold is one of the most sought-after towns in the North Cotswolds. Once a thriving wool town, it now offers an excellent range of shops, pubs and restaurants, all set around its historic market square. The town enjoys superb connectivity, with convenient road and rail links north to Birmingham and south to London. Stow provides a full range of everyday amenities, including a large supermarket, with Daylesford Organic Farm close by and wider facilities available in Cheltenham, Oxford and Banbury.

The area is exceptionally well served for schooling, with options including Stow Primary, Kitebrook, Tudor Hall, Cheltenham College, Cheltenham Ladies' College, The Cotswold School, Chipping Campden School, and leading Oxford schools such as The Dragon, Summerfields and St Edward's.





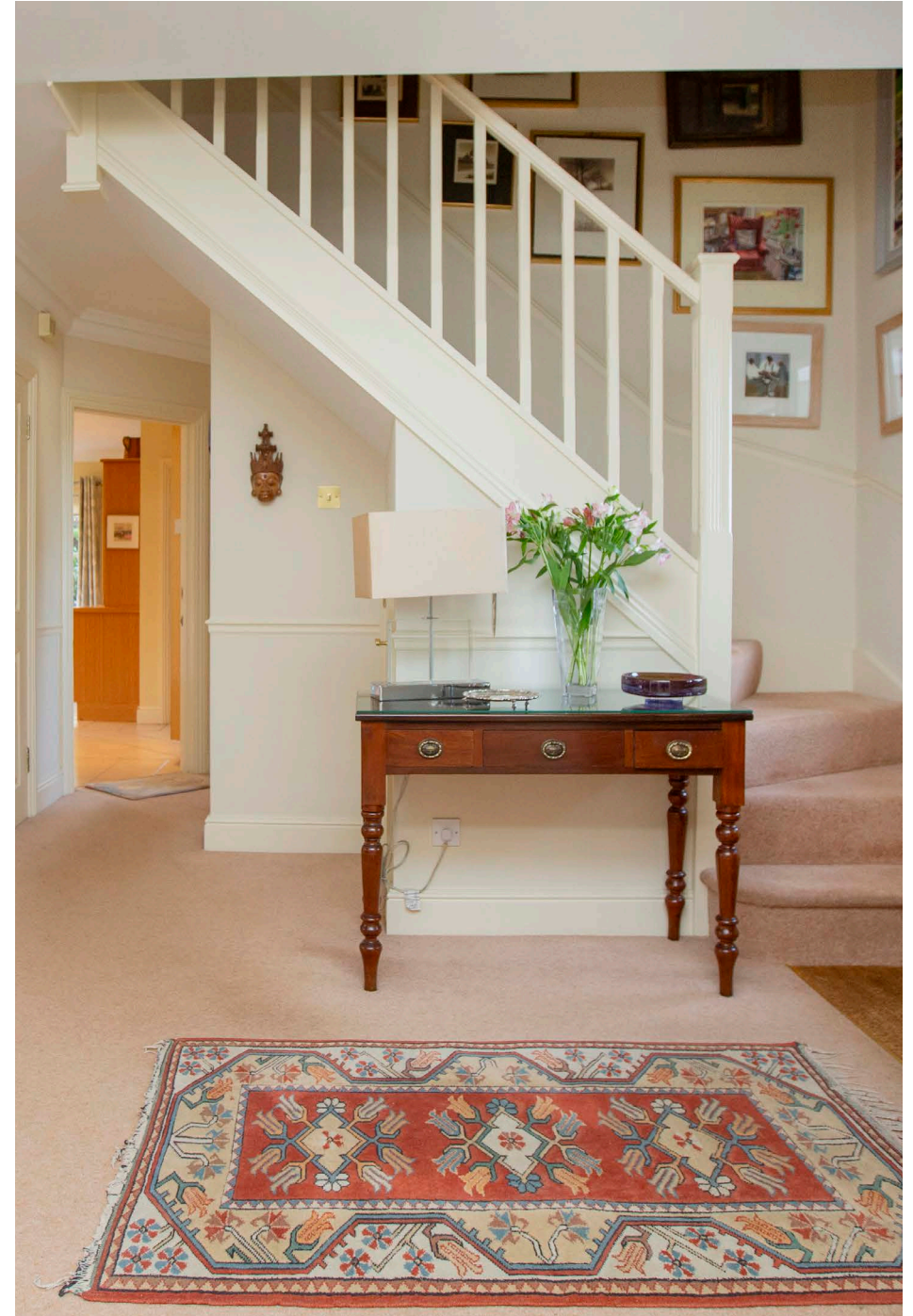
PROPERTY

Fosse Lodge enjoys one of the most sought-after positions in town—just moments from the amenities of the market square, yet tucked away in a peaceful setting with stunning Cotswold views.

The property is approached via a gravelled driveway with ample parking and a generous double garage. Inside, the welcoming entrance hall sets the tone for the spacious accommodation, leading to a triple-aspect drawing room, a dining room, home office, library/garden room, utility room with external access, and a superb open-plan kitchen/breakfast room opening onto the terrace.

Upstairs, the first floor offers equally well-proportioned accommodation with five bedrooms. Two large double bedrooms each benefit from en suite bathrooms, while three additional bedrooms are served by a family bathroom.

Outside, the gardens are beautifully landscaped, with a charming walled rear garden that enjoys sunshine late into the day and a perfect terrace for outdoor dining. A versatile studio with power and heating provides excellent space for hobbies or a dedicated home office.







The North Cotswolds is rich in recreational and cultural opportunities. Cheltenham Racecourse hosts world-class jump racing events, including the prestigious Cheltenham Gold Cup. Golfers can enjoy courses at Burford, Naunton Downs, and Lyneham, while rugby fans will find top-tier matches in Gloucester.

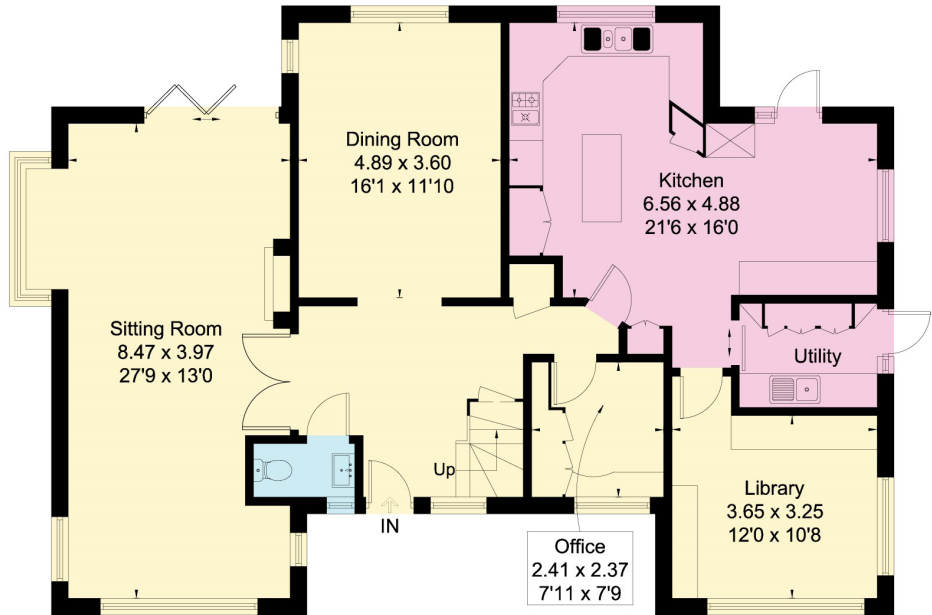
Outdoor enthusiasts will appreciate the wealth of walking, cycling, and riding routes that meander through the area's scenic countryside. The cultural calendar is equally vibrant, with highlights such as the Cheltenham Literature Festival, The Big Festival, Wilderness Festival, and numerous concerts, art exhibitions, and theatre productions throughout the year.

Distances: Moreton-in-Marsh 4 miles and Kingham 5 miles (both with trains to London Paddington from approx. 76 mins), Burford 7 miles, Cheltenham 20 miles, Cirencester 22 miles, Oxford 25 miles. (All distances and times approximate.)

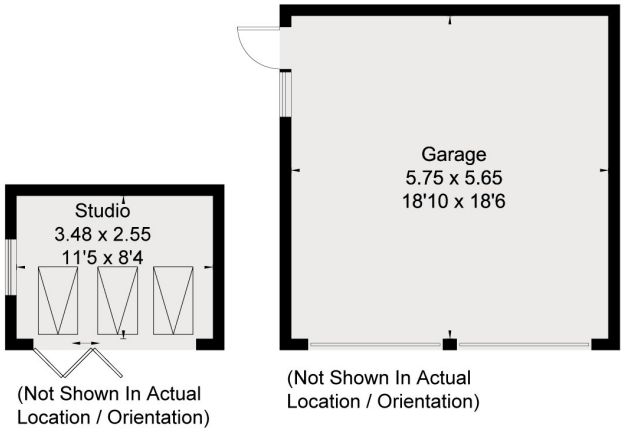




Approximate Floor Area = 226.4 sq m / 2437 sq ft
Outbuildings = 41.4 sq m / 446 sq ft
Total = 267.8 sq m / 2883 sq ft (Including Eaves)



Ground Floor



First Floor

This plan is for layout guidance only. Not drawn to scale unless stated. Windows and door openings are approximate. Whilst every care is taken in the preparation of this plan, please check all dimensions, shapes and compass bearings before making any decisions reliant upon them. (ID767266)



Leigh Glazebrook

Tel: 01451 600610

Email: leigh.glazebrook@knightfrank.com

Knight Frank Stow-on-the-Wold

Brett House, Park Street

Stow-on-the-Wold, GL54 1AG

[knightfrank.co.uk](https://www.knightfrank.co.uk)

Your partners in property

1. Particulars: These particulars are not an offer or contract, nor part of one. You should not rely on statements given by Knight Frank in the particulars, by word of mouth or in writing ("information") as being factually accurate about the property, its condition or its value. Neither Knight Frank nor any joint agent has any authority to make any representations about the property, and accordingly any information given is entirely without responsibility on the part of Knight Frank. 2. Material Information: Please note that the material information is provided to Knight Frank by third parties and is provided here as a guide only. While Knight Frank has taken steps to verify this information, we advise you to confirm the details of any such material information prior to any offer being submitted. If we are informed of changes to this information by the seller or another third party, we will use reasonable endeavours to update this as soon as practical. 3. Photos, Videos etc: The photographs, property videos and virtual viewings etc. show only certain parts of the property as they appeared at the time they were taken. Areas, measurements and distances given are approximate only. 4. Regulations etc: Any reference to alterations to, or use of, any part of the property does not mean that any necessary planning, building regulations or other consent has been obtained. A buyer must find out by inspection or in other ways that these matters have been properly dealt with and that all information is correct. 5. Fixtures and fittings: A list of the fitted carpets, curtains, light fittings and other items fixed to the property which are included in the sale (or may be available by separate negotiation) will be provided by the Seller's Solicitors. 6. VAT: The VAT position relating to the property may change without notice. 7. To find out how we process Personal Data, please refer to our Group Privacy Statement and other notices at <https://www.knightfrank.com/legals/privacy-statement>.

Particulars dated December 2025. Photographs dated December 2025. All information is correct at the time of going to print. Knight Frank is the trading name of Knight Frank LLP. Knight Frank LLP is a limited liability partnership registered in England and Wales with registered number OC305934. Our registered office is at 55 Baker Street, London W1U 8AN. We use the term 'partner' to refer to a member of Knight Frank LLP, or an employee or consultant. A list of members names of Knight Frank LLP may be inspected at our registered office. If you do not want us to contact you further about our services then please contact us by either calling 020 3544 0692, email to marketing.help@knightfrank.com or post to our UK Residential Marketing Manager at our registered office (above) providing your name and address.

