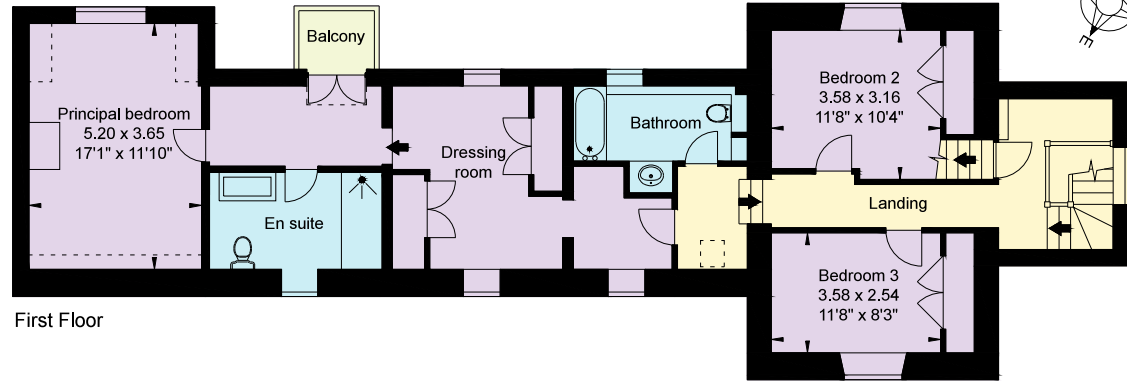
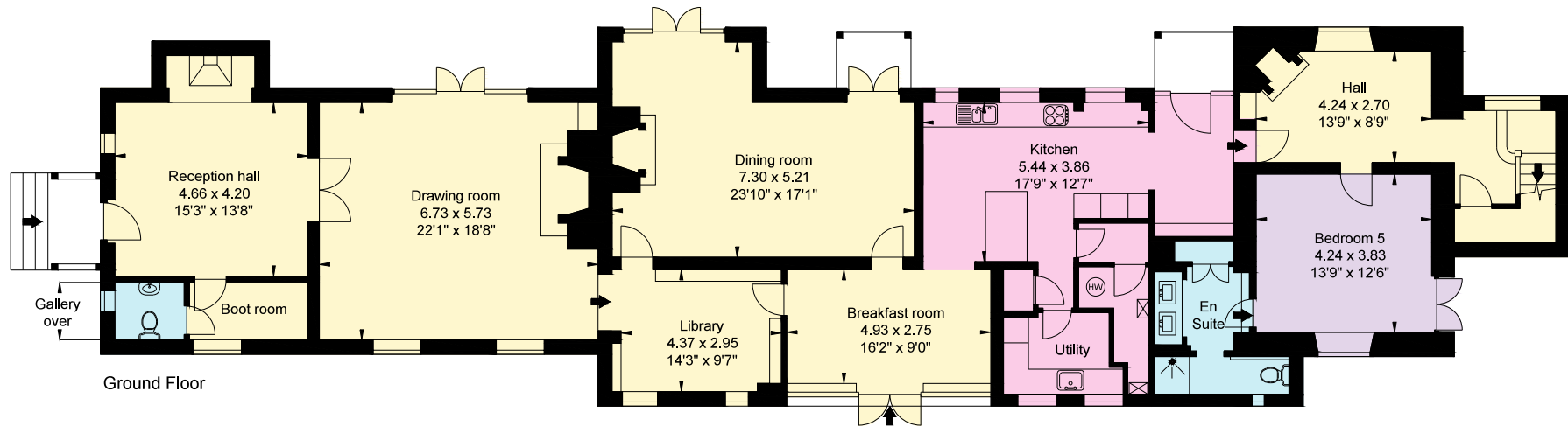
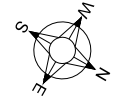


Second Floor

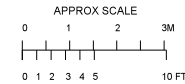
Denotes restricted head height



First Floor



Ground Floor



APPROXIMATE GROSS INTERNAL FLOOR AREA:

House: 340 sq m (3,660 sq ft)

Leisure Complex: 157 sq m (1,690 sq ft)

Garage/Apartment: 100 sq m (1,076 sq ft)

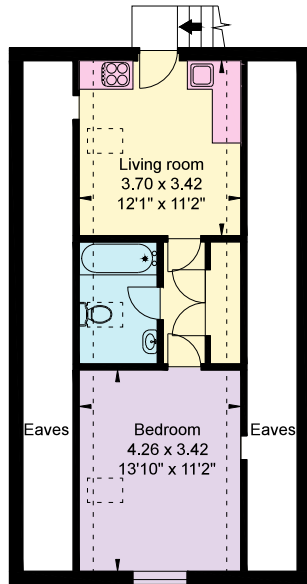
Total: 597 sq m (6,426 sq ft)

© Cotswold Plans Ltd. 01386 430176

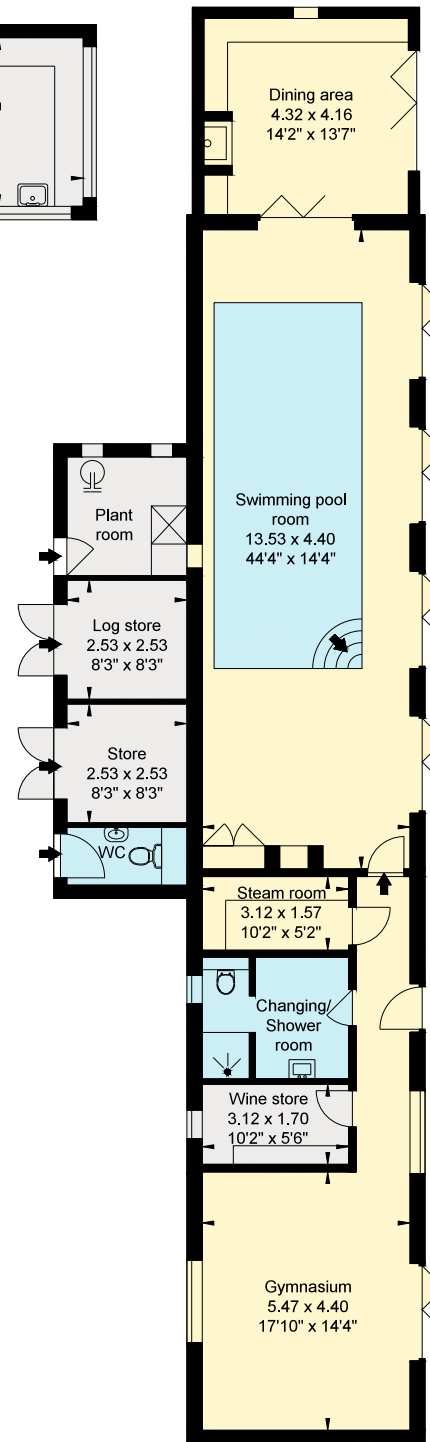
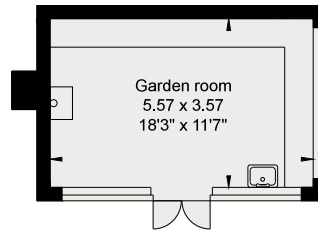
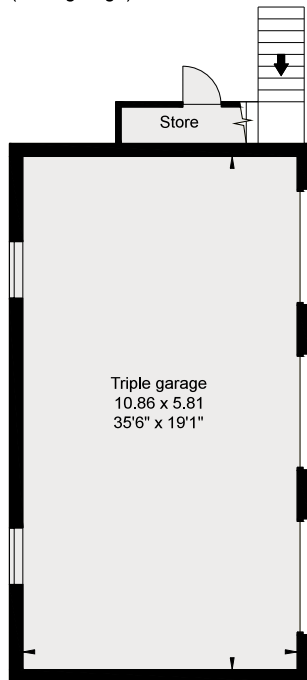
ma/14655

This plan is for guidance only and must not be relied upon as a statement of fact. Attention is drawn to the Important Notice on the last page of text of the Particulars.

## Northwick House Blockley



First Floor  
(Over garage)



Leisure Complex