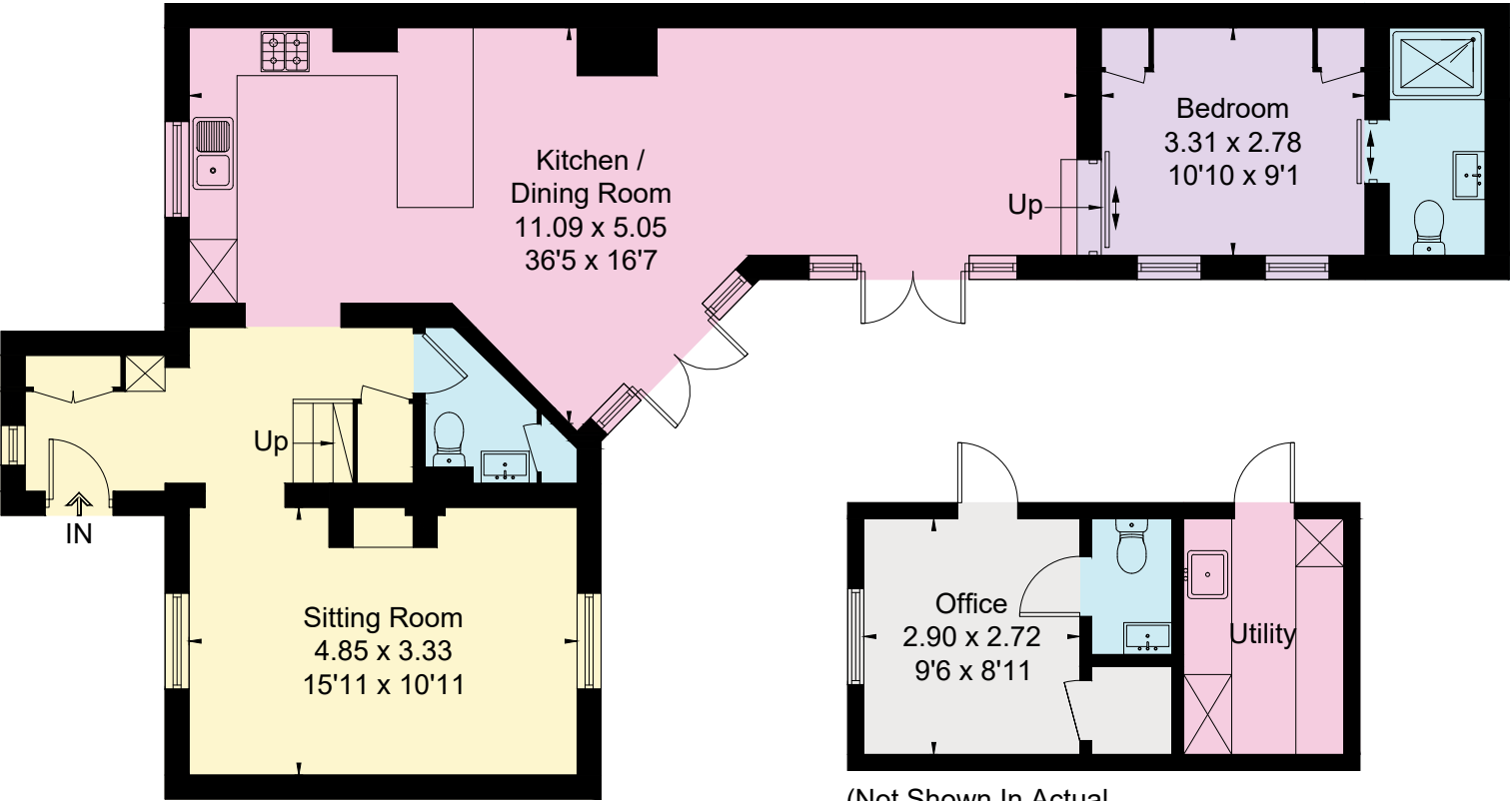
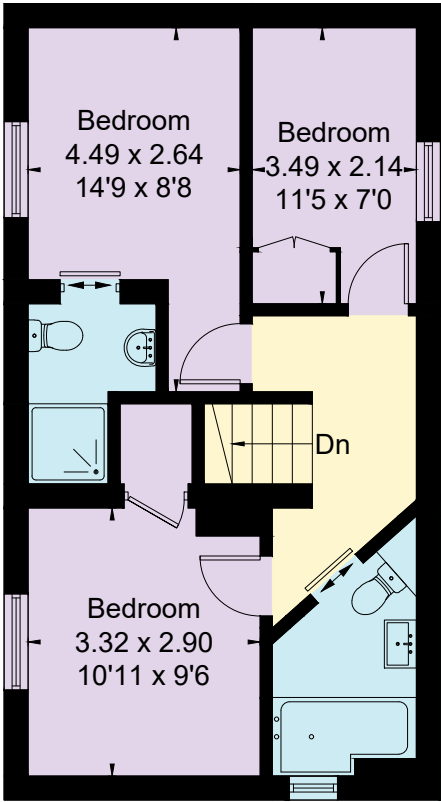


Approximate Floor Area = 129.2 sq m / 1391 sq ft  
Outbuilding = 17.7 sq m / 190 sq ft  
Total = 146.9 sq m / 1581 sq ft



Ground Floor

(Not Shown In Actual  
Location / Orientation)



First Floor



This floor plan has been drawn in accordance with RICS Property Measurement 2nd edition.  
All measurements, including the floor area, are approximate and for illustrative purposes only. @fourwalls-group.com #89627