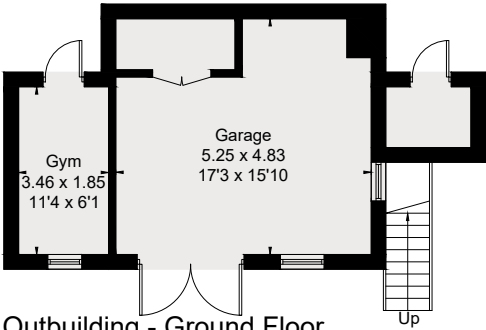
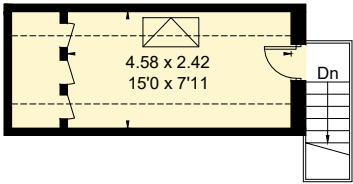


Approximate Floor Area = 236.3 sq m / 2,543 sq ft  
Outbuilding = 48.3 sq m / 520 sq ft  
Total = 284.6 sq m / 3,063 sq ft

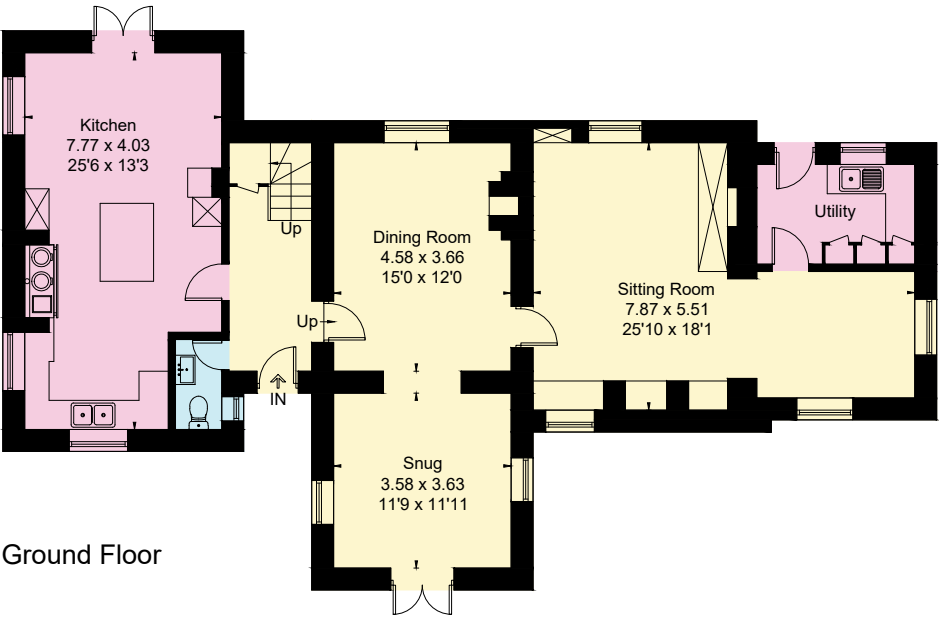


Outbuilding - Ground Floor

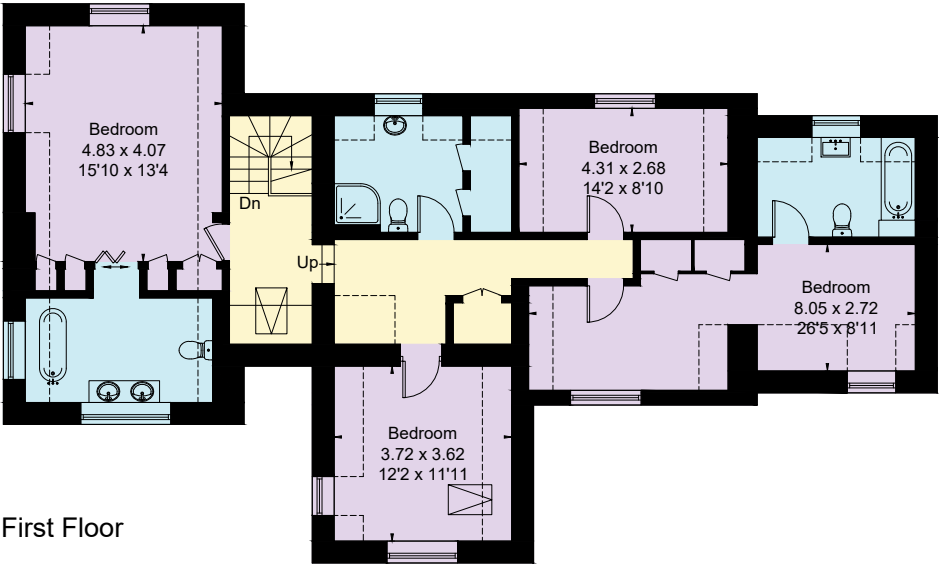
(Not Shown In Actual Location / Orientation)



Outbuilding - First Floor



Ground Floor



First Floor



This floor plan has been drawn in accordance with RICS Property Measurement 2nd edition.  
All measurements, including the floor area, are approximate and for illustrative purposes only. @fourwalls-group.com #87811