



10 Park Drive
Canary Wharf

Elegant architecture
Skygarden
Terraces
Panoramic views

“Canary Wharf’s private Estate is one of the most secure, desired and distinctive neighbourhoods in the world.”

Sir George Iacobescu CBE
Executive Chairman
Canary Wharf Group





Canary Wharf's Private Estate

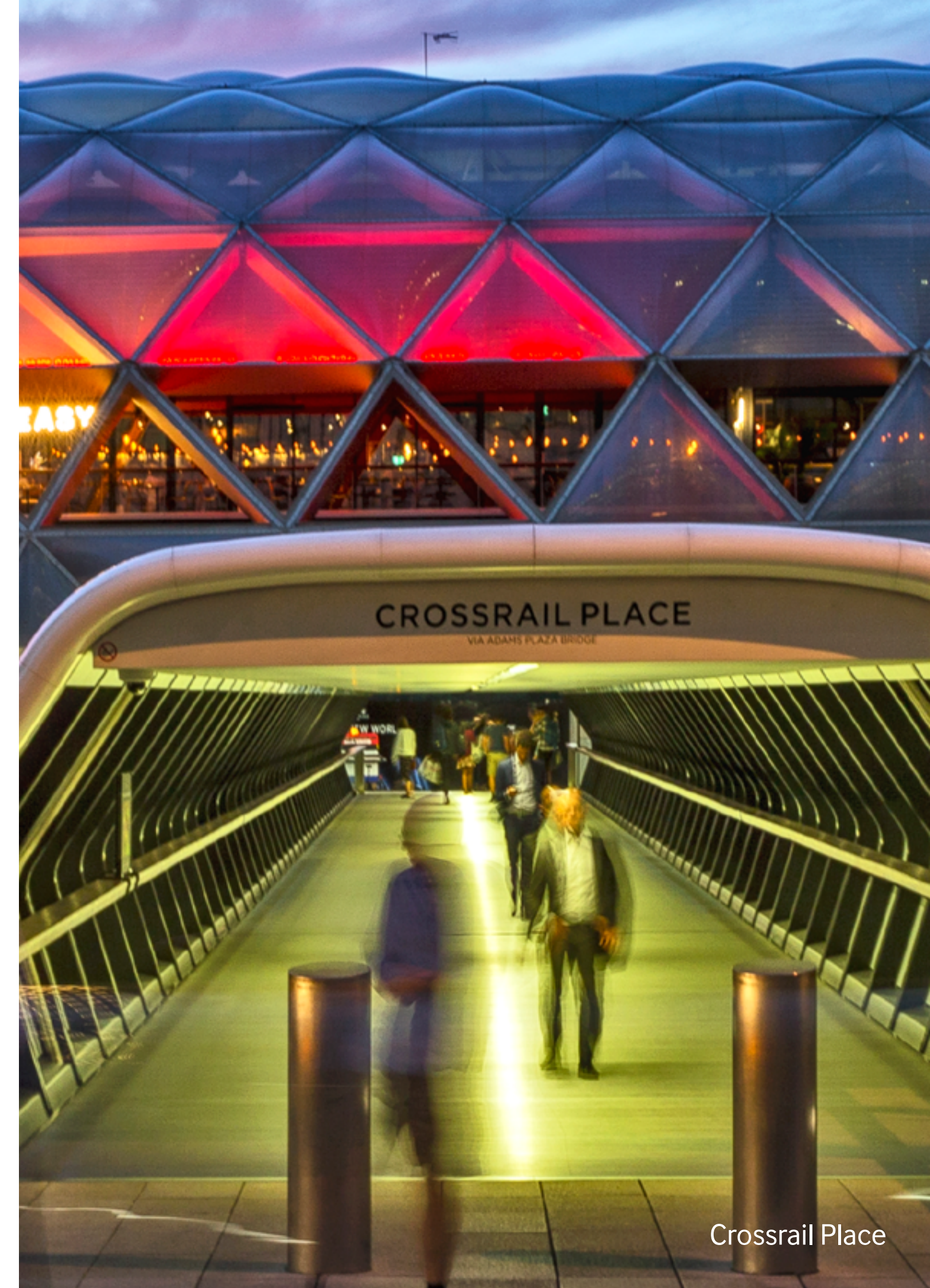
The 128-acre private Estate is one of the world's great city spaces; internationally renowned as one of the capital's most vibrant districts with a unique waterside location, enriched by London's largest collection of outdoor public art and cultural programme.

The Group's careful stewardship over the last 30 years also means it's recognised for being both beautifully maintained and reassuringly safe.





Crossrail Place Roof Garden



Crossrail Place



Crossrail Place



Canary Wharf's
New Neighbourhood
Wood Wharf



Canary Wharf's
New Neighbourhood

Wood Wharf is a place of green spaces and waterside boardwalks. An oasis of calm yet one of the most well-connected districts in Europe. When complete, it will be local neighbourhood with a primary school and doctor's surgery – as well as all the benefits of being part of a private Estate.



Water Street overlooking Water Square

View of Harbour Quay Gardens and South Dock





Canary Wharf's
New Neighbourhood

“When we created the first plans for Canary Wharf, we placed the highest priority on creating beautiful and versatile open spaces that provide a sense of serenity and well-being. At Wood Wharf, we have taken this even further – over a third of the new neighbourhood is to be dedicated to parks, boardwalks and gardens.”

Brian De'ath
Director of Residential Sales
Canary Wharf Group

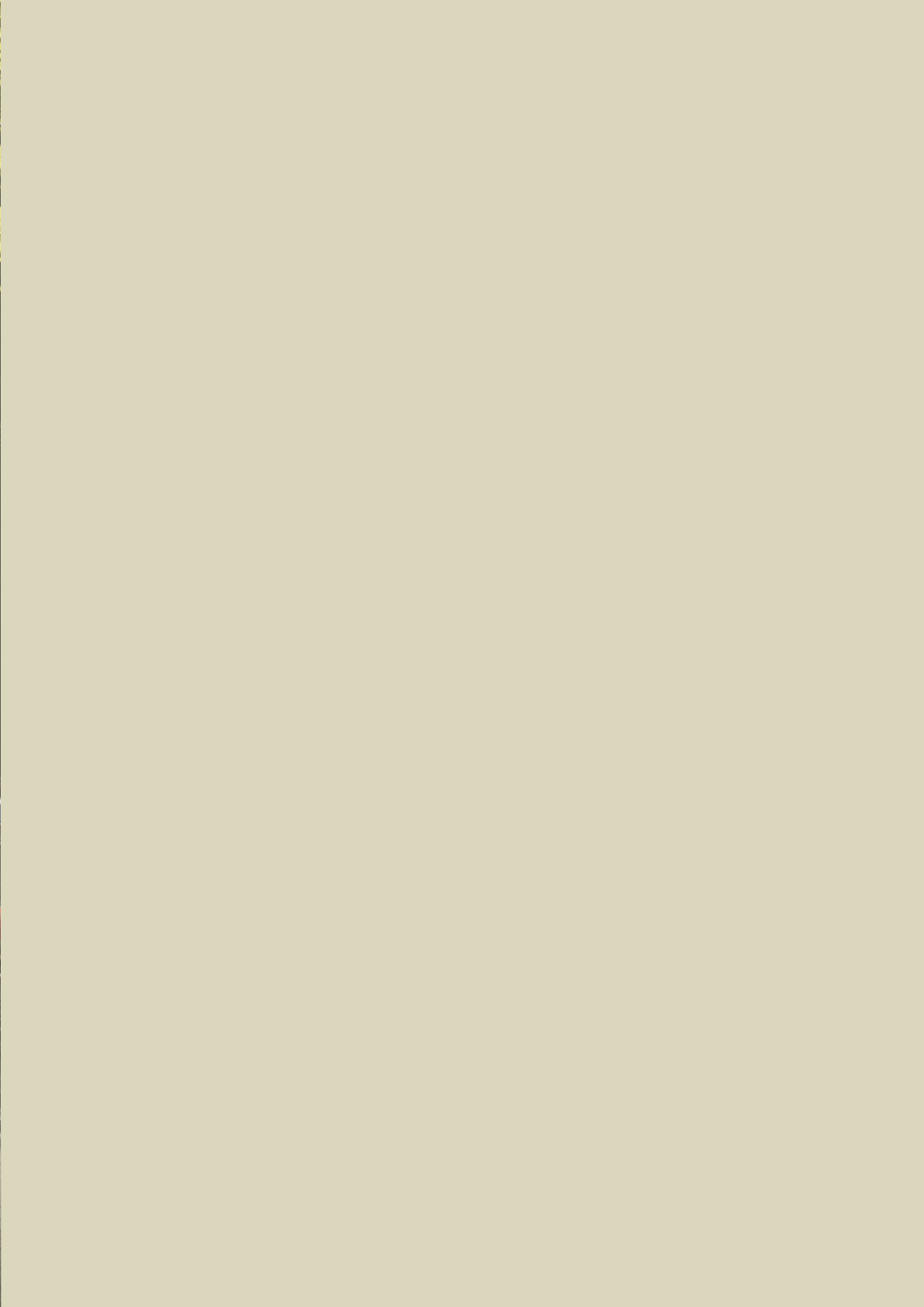


Harbour Quay Boardwalk

Harbour Quay Boardwalk



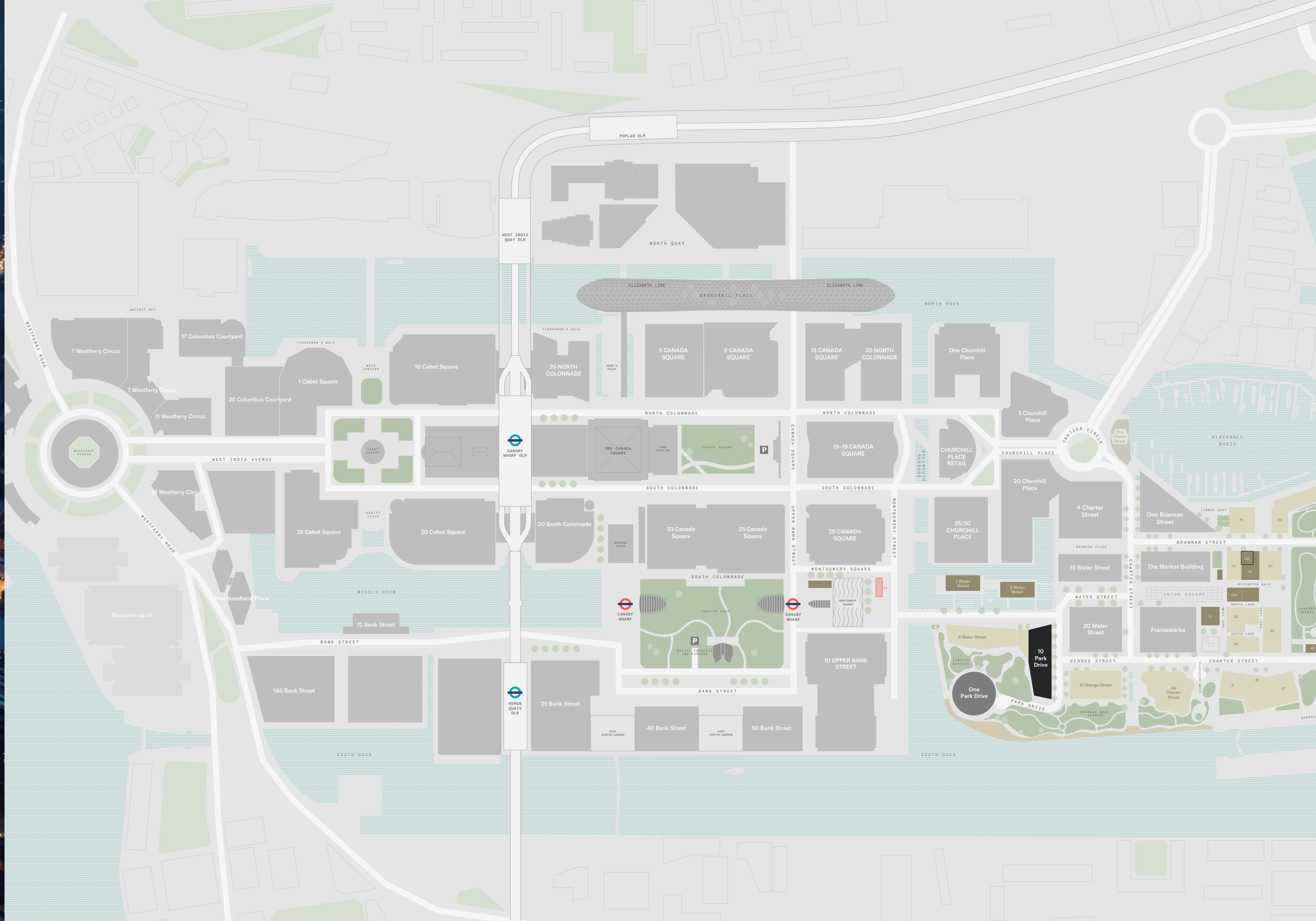
Charter Street



South Dock Gardens



Canary Wharf's 128-acre private Estate





Resident Amenities Third Space

Resident Amenities
Third Space

Residents of 10 Park Drive will benefit from a 40,000 sq. ft. premium health club, featuring industry-leading personal trainers and state-of-the-art facilities, including a private training area, spa, hydrotherapy pool and lounge.



Third Space Reception, Canary Wharf



Third Space Spin Studio, Canary Wharf



Third Space Changing Rooms, Canary Wharf



Third Space Yoga Studio, City

“Residents will be able to experience everything a Third Space club has to offer, as well as a private sanctuary for relaxation.”


Colin Waggett
CEO
Third Space



Third Space Spin Studio, City



Third Space Swimming Pool, Canary Wharf



Architecture
Stanton Williams

2020 Best Apartment Scheme in the UK as voted for by WhatHouse



View from South Dock looking onto One & 10 Park Drive

Elegant architecture
10 Park Drive

Designed by world-renowned architects Stanton Williams, 10 Park Drive, with its elegant simplicity, overlooks the docks on both its south and north elevations, connecting to the water with beautifully landscaped parks and gardens.



10 Park Drive, Entrance



10 Park Drive, Exterior



Entrance Lobby



Residents' Lobby



Residents' Skygarden, 13th floor



Interiors Make Architects



Living area of apartment 2904
Photography taken September 2020



Living and Dining area of apartment 2904
Photography taken September 2020



Kitchen, Dining and Living area of apartment 2906
Photography taken September 2020



“We interpreted the architecture of the building as a solid block, with carved out recesses articulated by fine metal detailing and this is visually echoed throughout the interior.”

Katy Ghahremani
Partner
Make Architects



En-suite shower-room of apartment 2904
Photography taken September 2020



Master bedroom with balcony of apartment 2904
Photography taken September 2020



View from apartment 2904 looking onto One Park Drive and South Dock
Photography taken September 2020



“The combination of a vibrant community, great apartments, wonderful social spaces, gardens and generous views are hard to find anywhere else in London.”

Stephen Andrews
Project Design Executive,
Canary Wharf Group



Balcony of apartment 2902
Photography taken September 2020

View from the bedroom of apartment 2906 looking onto the River Thames and the O2
Photography taken September 2020

The views from 10 Park Drive are spectacular. Overlooking the vibrant world of Canary Wharf, the parks and gardens, and the ever-changing Thames.



View from 10 Park Drive looking onto One Park Drive and South Dock

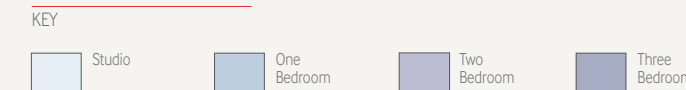
The image shows a dark, textured surface, possibly a metal floor plate, with a vertical seam or joint on the right side. The texture is grainy and uneven, with some darker spots and lighter areas. The word "Floorplates" is written in white, sans-serif font in the center of the image.

Floorplates

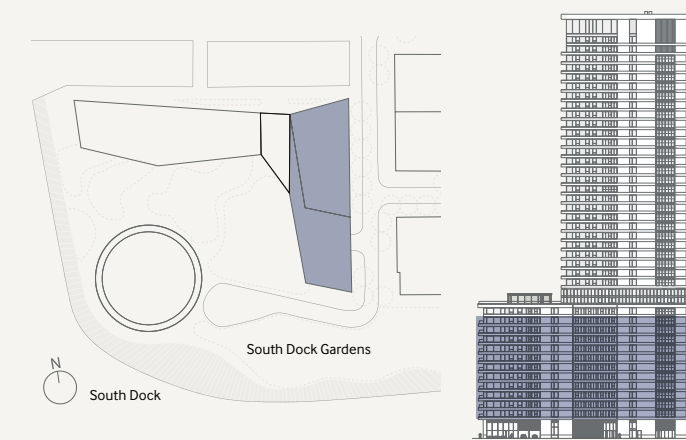
LEVELS 1-11



NOT TO SCALE



SITE PLAN EAST ELEVATION



STUDIO APARTMENTS

Apartment	sq. ft.	sq. m.
Apartment Area	398	37.00
Living/Bedroom	23'11 x 12'0	7.30 x 3.66
Juliette Balcony	-	-

Apartment 1.03-11.03 (exec)	sq. ft.	sq. m.
Apartment Area	672	62.47
Living/Bedroom	29'5 x 18'3	8.97 x 5.56

Apartment 1.04-11.04	sq. ft.	sq. m.
Apartment Area	413	38.37
Living/Bedroom	22'12 x 13'5	7.0 x 4.10
Balcony	56	5.2

Apartment 1.14-11.14	sq. ft.	sq. m.
Apartment Area	445	41.38
Living/Bedroom	27'9 x 13'0	8.46 x 3.97
Juliette Balcony	-	-

ONE BEDROOM APARTMENTS

Apartment 1.01-11.01	sq. ft.	sq. m.
Apartment Area	622	57.75
Living/Kitchen	27'6 x 12'9	8.37 x 3.88
Master Bedroom	19'7 x 9'5	5.96 x 2.87
Juliette Balcony	-	-

Apartment 1.05-11.05	sq. ft.	sq. m.
Apartment Area	653	60.65
Living/Kitchen	28'10 x 13'0	8.79 x 3.97
Master Bedroom	21'6 x 9'2	6.54 x 2.80
Balcony	114	10.6

Apartment 1.06-11.06	sq. ft.	sq. m.
Apartment Area	672	62.45
Living/Kitchen	28'10 x 11'5	8.79 x 3.49
Master Bedroom	21'3 x 9'11	6.47 x 3.02
Balcony	51	4.7

Apartment 1.09-11.09	sq. ft.	sq. m.
Apartment Area	440	40.85
Living/Kitchen	21'6 x 12'2	6.55 x 3.71
Master Bedroom	11'12 x 9'2	3.65 x 2.80
Juliette Balcony	-	-

Apartment 1.13-11.13	sq. ft.	sq. m.
Apartment Area	638	59.25
Living/Kitchen	35'5 x 11'8	10.81 x 3.55
Master Bedroom	11'10 x 9'0	3.61 x 2.75
Balcony	90	8.3

TWO BEDROOM APARTMENTS

Apartment 1.07-11.07	sq. ft.	sq. m.
Apartment Area	901	83.75
Living/Kitchen	26'6 x 15'1	8.07 x 4.60
Master Bedroom	14'9 x 10'3	4.50 x 3.12
Second Bedroom	14'9 x 9'7	4.50 x 2.93
Juliette Balcony	-	-

Apartment 1.08*-11.08	sq. ft.	sq. m.
Apartment Area	871	80.96
Living/Kitchen	24'7 x 14'0	7.50 x 4.27
Master Bedroom	13'8 x 9'2	4.17 x 2.80
Second Bedroom	11'4 x 9'1	3.46 x 2.78
Balcony	116	10.7

Apartment 1.10-11.10	sq. ft.	sq. m.
Apartment Area	1176	109.24
Living/Kitchen	29'10 x 19'11	9.09 x 6.07
Master Bedroom	14'1 x 10'0	4.29 x 3.20
Second Bedroom	13'9 x 9'6	4.19 x 2.90
Balcony	172	16.0

Apartment 1.12-11.12	sq. ft.	sq. m.
Apartment Area	880	81.77
Living/Kitchen	31'0 x 11'0	9.46 x 3.36
Master Bedroom	20'8 x 9'1	6.29 x 2.78
Second Bedroom	14'0 x 8'10	4.28 x 2.70
Balcony	151	14.0

THREE BEDROOM APARTMENTS

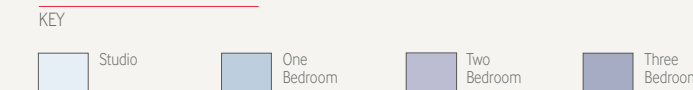
Apartment 1.11-11.11	sq. ft.	sq. m.
Apartment Area	1246	115.78
Living/Kitchen	22'8 x 20'7	6.90 x 6.27
Master Bedroom	19'5 x 9'6	5.92 x 2.90
Second Bedroom	12'1 x 9'11	3.69 x 3.03
Third Bedroom	12'4 x 8'9	3.75 x 2.68
Balconies	226	21.0

Floorplan measurements are approximate. Exact layout sizes may vary in accordance with the contract. Please speak to a Sales Consultant to receive an individual plan of your preferred apartment.

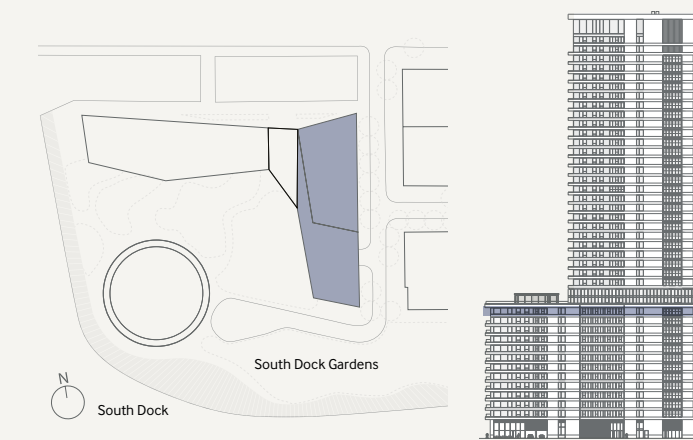
LEVEL 12



NOT TO SCALE



SITE PLAN EAST ELEVATION



STUDIO APARTMENTS

Apartment 12.02	sq. ft.	sq. m.
Apartment Area	398	37.00
Living/Bedroom	23'11 x 12'0	7.30 x 3.66
Juliette Balcony	-	-

Apartment 12.03 (exec)	sq. ft.	sq. m.
Apartment Area	672	62.47
Living/Bedroom	29'5 x 18'3	8.97 x 5.56

Apartment 12.04	sq. ft.	sq. m.
Apartment Area	413	38.37
Living/Bedroom	22'12 x 13'5	7.0 x 4.10
Balcony	56	5.2

Apartment 12.13	sq. ft.	sq. m.
Apartment Area	445	41.38
Living/Bedroom	27'9 x 13'0	8.46 x 3.97
Juliette Balcony	-	-

ONE BEDROOM APARTMENTS

Apartment 12.01	sq. ft.	sq. m.
Apartment Area	622	57.75
Living/Kitchen	27'6 x 12'9	8.37 x 3.88
Master Bedroom	19'7 x 9'5	5.96 x 2.87
Juliette Balcony	-	-

Apartment 12.05	sq. ft.	sq. m.
Apartment Area	653	60.65
Living/Kitchen	28'10 x 13'0	8.79 x 3.97
Master Bedroom	21'6 x 9'2	6.54 x 2.80
Balcony	114	10.6

Apartment 12.06	sq. ft.	sq. m.
Apartment Area	672	62.45
Living/Kitchen	28'10 x 11'5	8.79 x 3.49
Master Bedroom	21'3 x 9'11	6.47 x 3.02
Balcony	51	4.7

Apartment 12.12	sq. ft.	sq. m.
Apartment Area	638	59.25
Living/Kitchen	35'5 x 11'8	10.81 x 3.55
Master Bedroom	11'10 x 9'0	3.61 x 2.75
Balcony	90	8.3

TWO BEDROOM APARTMENTS

Apartment 12.07	sq. ft.	sq. m.
Apartment Area	901	83.75
Living/Kitchen	26'6 x 15'1	8.07 x 4.60
Master Bedroom	14'9 x 10'3	4.50 x 3.12
Second Bedroom	14'9 x 9'7	4.50 x 2.93
Juliette Balcony	-	-

Apartment 12.08	sq. ft.	sq. m.
Apartment Area	871	80.96
Living/Kitchen	24'7 x 14'0	7.50 x 4.27
Master Bedroom	13'8 x 9'2	4.17 x 2.80
Second Bedroom	11'4 x 9'1	3.46 x 2.78
Balcony	116	10.7

Apartment 12.11	sq. ft.	sq. m.
Apartment Area	880	81.77
Living/Kitchen	31'0 x 11'0	9.46 x 3.36
Master Bedroom	20'8 x 9'1	6.29 x 2.78
Second Bedroom	14'0 x 8'10	4.28 x 2.70
Balcony	151	14.0

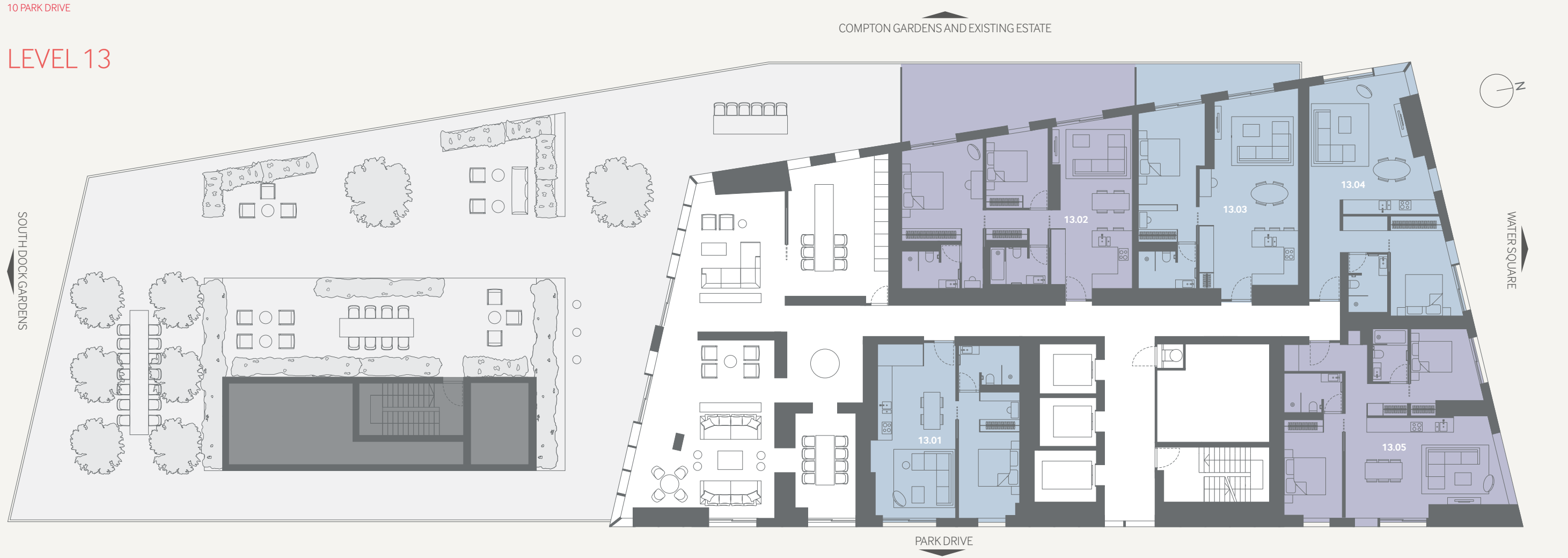
THREE BEDROOM APARTMENTS

Apartment 12.09	sq. ft.	sq. m.
Apartment Area	1442	133.96
Living/Kitchen	29'10 x 19'11	9.09 x 6.07
Master Bedroom	14'1 x 10'0	4.29 x 3.20
Second Bedroom	15'1 x 10'0	4.60 x 3.17
Third Bedroom	11'10 x 9'6	3.65 x 2.9
Juliette Balcony	-	-

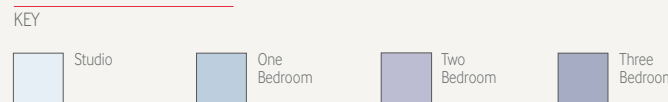
Apartment 12.10	sq. ft.	sq. m.
Apartment Area	1246	115.78
Living/Kitchen	22'8 x 20'7	6.90 x 6.27
Master Bedroom	19'5 x 9'6	5.92 x 2.90
Second Bedroom	12'1 x 9'11	3.69 x 3.03
Third Bedroom	12'4 x 8'9	3.75 x 2.68
Balcony	103	9.6

Floorplan measurements are approximate. Exact layout sizes may vary in accordance with the contract. Please speak to a Sales Consultant to receive an individual plan of your preferred apartment.

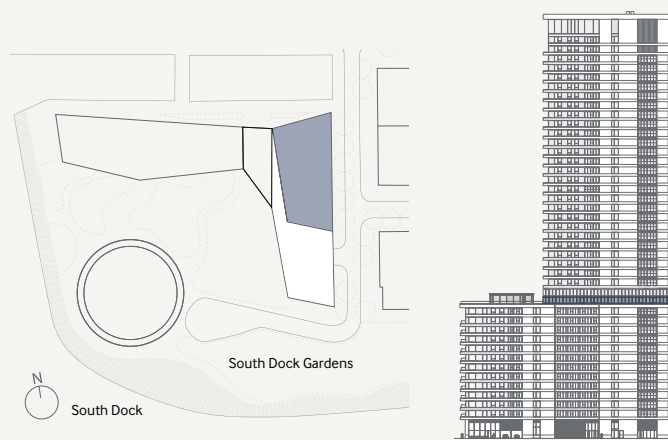
LEVEL 13



NOT TO SCALE



SITE PLAN EAST ELEVATION



ONE BEDROOM APARTMENTS TWO BEDROOM APARTMENTS

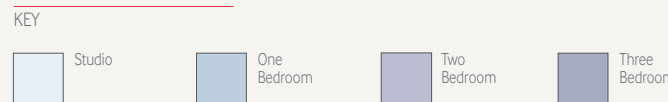
Apartment	sq. ft.	sq. m.	Apartment	sq. ft.	sq. m.
Apartment 13.01	633	58.78	Apartment 13.02	897	83.37
Apartment Area	27'10" x 13'1"	8.49 x 3.99	Living/Kitchen	26'0" x 11'5"	8.20 x 3.48
Living/Kitchen	20'1" x 9'3"	6.11 x 2.83	Master Bedroom	15'11" x 12'11"	4.85 x 3.93
Master Bedroom	12'0" x 9'9"	3.75 x 2.98	Second Bedroom	12'0" x 9'9"	3.75 x 2.98
Second Bedroom	-	-	Terrace	365	33.9
Juliette Balcony	-	-			
			Apartment 13.03	746	69.35
			Apartment Area	31'0" x 15'9"	9.60 x 4.80
			Living/Kitchen	20'0" x 10'7"	6.28 x 3.22
			Master Bedroom	122	11.3
			Terrace	-	-
			Apartment 13.04	724	67.23
			Apartment Area	21'2" x 19'2"	6.46 x 5.85
			Living/Kitchen	14'0" x 10'6"	4.28 x 3.21
			Master Bedroom	-	-
			Juliette Balcony	-	-
			Apartment 13.05	936	86.96
			Apartment Area	25'2" x 16'0"	7.66 x 4.88
			Living/Kitchen	15'8" x 9'2"	4.77 x 2.80
			Master Bedroom	11'3" x 10'0"	3.44 x 3.23
			Second Bedroom	-	-
			Juliette Balcony	-	-

Floorplan measurements are approximate
 Exact layout sizes may vary in accordance with the contract
 Please speak to a Sales Consultant to receive an individual plan of your preferred apartment.

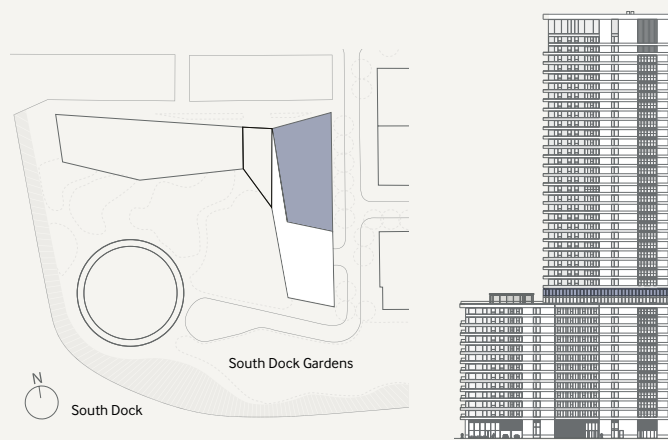
LEVEL 14



NOT TO SCALE



SITE PLAN EAST ELEVATION



STUDIO APARTMENTS ONE BEDROOM APARTMENTS TWO BEDROOM APARTMENTS

Apartment	sq. ft.	sq. m.	Apartment	sq. ft.	sq. m.	Apartment	sq. ft.	sq. m.
Apartment 14.01	502	46.68	Apartment 14.04	568	52.80	Apartment 14.02	1118	103.87
Apartment Area	27'7" x 18'0"	8.40 x 5.49	Living/Kitchen	26'4" x 13'2"	8.02 x 4.01	Living/Kitchen	35'9" x 13'8"	10.98 x 4.16
Living/Bedroom	-	-	Master Bedroom	17'5" x 9'0"	5.31 x 2.75	Master Bedroom	17'1" x 12'0"	5.20 x 3.67
Juliette Balcony	-	-	Juliette Balcony	-	-	Second Bedroom	13'1" x 12'5"	4.00 x 3.79
						Juliette Balcony	-	-
			Apartment 14.05	746	69.35	Apartment 14.03	1159	107.71
			Apartment Area	31'0" x 15'9"	9.60 x 4.80	Apartment Area	24'8" x 22'0"	7.52 x 6.89
			Living/Kitchen	20'0" x 10'7"	6.28 x 3.22	Living/Kitchen	14'6" x 12'0"	4.41 x 3.67
			Master Bedroom	-	-	Master Bedroom	11'8" x 9'1"	3.55 x 2.76
			Juliette Balcony	-	-	Second Bedroom	-	-
						Juliette Balcony	-	-
			Apartment 14.06	724	67.23	Apartment 14.07	936	86.96
			Apartment Area	21'2" x 19'2"	6.46 x 5.85	Apartment Area	25'2" x 16'0"	7.66 x 4.88
			Living/Kitchen	14'0" x 10'6"	4.28 x 3.21	Living/Kitchen	15'8" x 9'2"	4.77 x 2.80
			Master Bedroom	-	-	Master Bedroom	11'3" x 10'0"	3.44 x 3.23
			Juliette Balcony	-	-	Second Bedroom	-	-
						Juliette Balcony	-	-

Floorplan measurements are approximate
 Exact layout sizes may vary in accordance with the contract
 Please speak to a Sales Consultant to receive an individual plan of your preferred apartment.

LEVELS 15–27

STUDIO APARTMENTS

Apartment 15.01–27.01	sq. ft.	sq. m.
Apartment Area	499	46.40
Living/Bedroom	277 x 180	8.40 x 5.49
Juliette Balcony	–	–

ONE BEDROOM APARTMENTS

Apartment 15.04–27.04	sq. ft.	sq. m.
Apartment Area	461	42.82
Living/Kitchen	222 x 120	6.76 x 3.90
Master Bedroom	120 x 92	3.87 x 2.80
Balcony	108	10.0

Apartment 15.05–27.05	sq. ft.	sq. m.
Apartment Area	636	59.09
Living/Kitchen	2510 x 144	7.87 x 4.37
Master Bedroom	1612 x 93	5.17 x 2.82
Balconies	117	10.9

Apartment 15.06–27.06	sq. ft.	sq. m.
Apartment Area	656	60.93
Living/Kitchen	178 x 164	5.39 x 4.97
Master Bedroom	158 x 109	4.77 x 3.27
Balcony	75	6.9

TWO BEDROOM APARTMENTS

Apartment 15.02–27.02	sq. ft.	sq. m.
Apartment Area	960	89.22
Living/Kitchen	2910 x 138	9.10 x 4.16
Master Bedroom	141 x 95	4.29 x 2.88
Second Bedroom	133 x 126	4.03 x 3.80
Balcony	147	13.6

Apartment 15.03–27.03	sq. ft.	sq. m.
Apartment Area	922	85.68
Living/Kitchen	230 x 186	7.04 x 5.65
Master Bedroom	123 x 99	3.74 x 2.97
Second Bedroom	99 x 92	2.97 x 2.80
Balcony	178	16.6

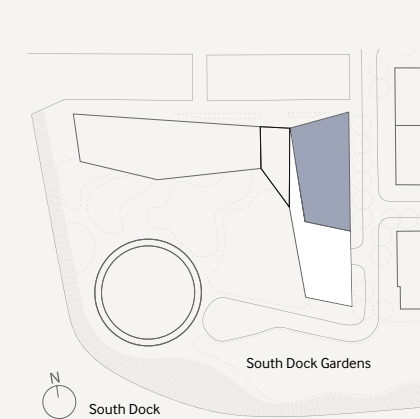
Apartment 15.07–27.07	sq. ft.	sq. m.
Apartment Area	899	83.56
Living/Kitchen	252 x 160	7.66 x 4.88
Master Bedroom	158 x 92	4.77 x 2.80
Second Bedroom	113 x 100	3.44 x 3.23
Balcony	116	10.7

*Juliette Balcony

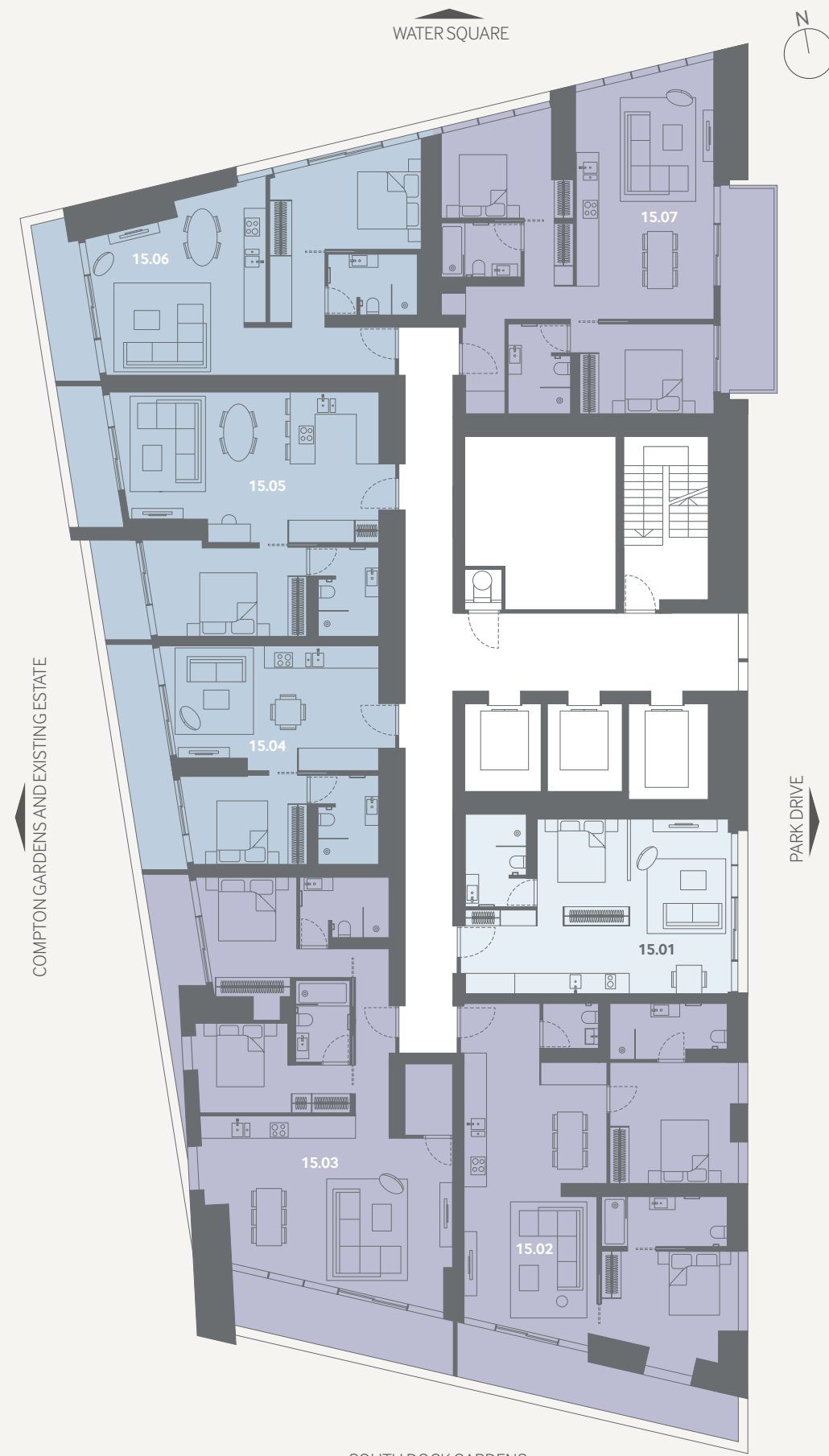
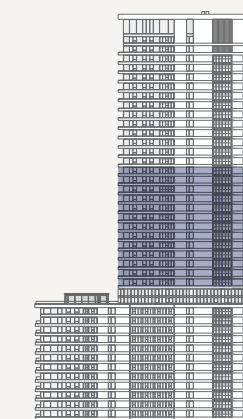
KEY

Studio	One Bedroom	Two Bedroom	Three Bedroom
--------	-------------	-------------	---------------

SITE PLAN



EAST ELEVATION



NOT TO SCALE

Floorplan measurements are approximate
Exact layout sizes may vary in accordance with the contract
Please speak to a Sales Consultant to receive an individual plan of your preferred apartment.

LEVELS 28–39

STUDIO APARTMENTS

Apartment 28.01–39.01	sq. ft.	sq. m.
Apartment Area	499	46.40
Living/Bedroom	277 x 180	8.40 x 5.49
Juliette Balcony	–	–

ONE BEDROOM APARTMENTS

Apartment 28.05–39.05	sq. ft.	sq. m.
Apartment Area	656	60.93
Living/Kitchen	178 x 164	5.39 x 4.97
Master Bedroom	158 x 109	4.77 x 3.27
Balcony	75	6.9

TWO BEDROOM APARTMENTS

Apartment 28.02–39.02	sq. ft.	sq. m.
Apartment Area	960	89.22
Living/Kitchen	2910 x 138	9.10 x 4.16
Master Bedroom	141 x 95	4.29 x 2.88
Second Bedroom	133 x 126	4.03 x 3.80
Balcony	147	13.6

Apartment 28.03–39.03	sq. ft.	sq. m.
Apartment Area	922	85.68
Living/Kitchen	230 x 186	7.04 x 5.65
Master Bedroom	123 x 99	3.74 x 2.97
Second Bedroom	99 x 92	2.97 x 2.80
Balcony	178	16.6

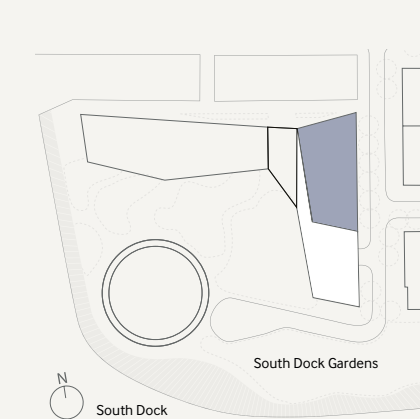
Apartment 28.04–39.04	sq. ft.	sq. m.
Apartment Area	1114	103.49
Living/Kitchen	243 x 225	7.40 x 6.83
Master Bedroom	195 x 131	5.91 x 3.99
Second Bedroom	135 x 104	4.10 x 3.15
Balconies	226	21.0

Apartment 28.06–39.06	sq. ft.	sq. m.
Apartment Area	899	83.56
Living/Kitchen	252 x 160	7.66 x 4.88
Master Bedroom	158 x 92	4.77 x 2.80
Second Bedroom	113 x 100	3.44 x 3.23
Balcony	116	10.7

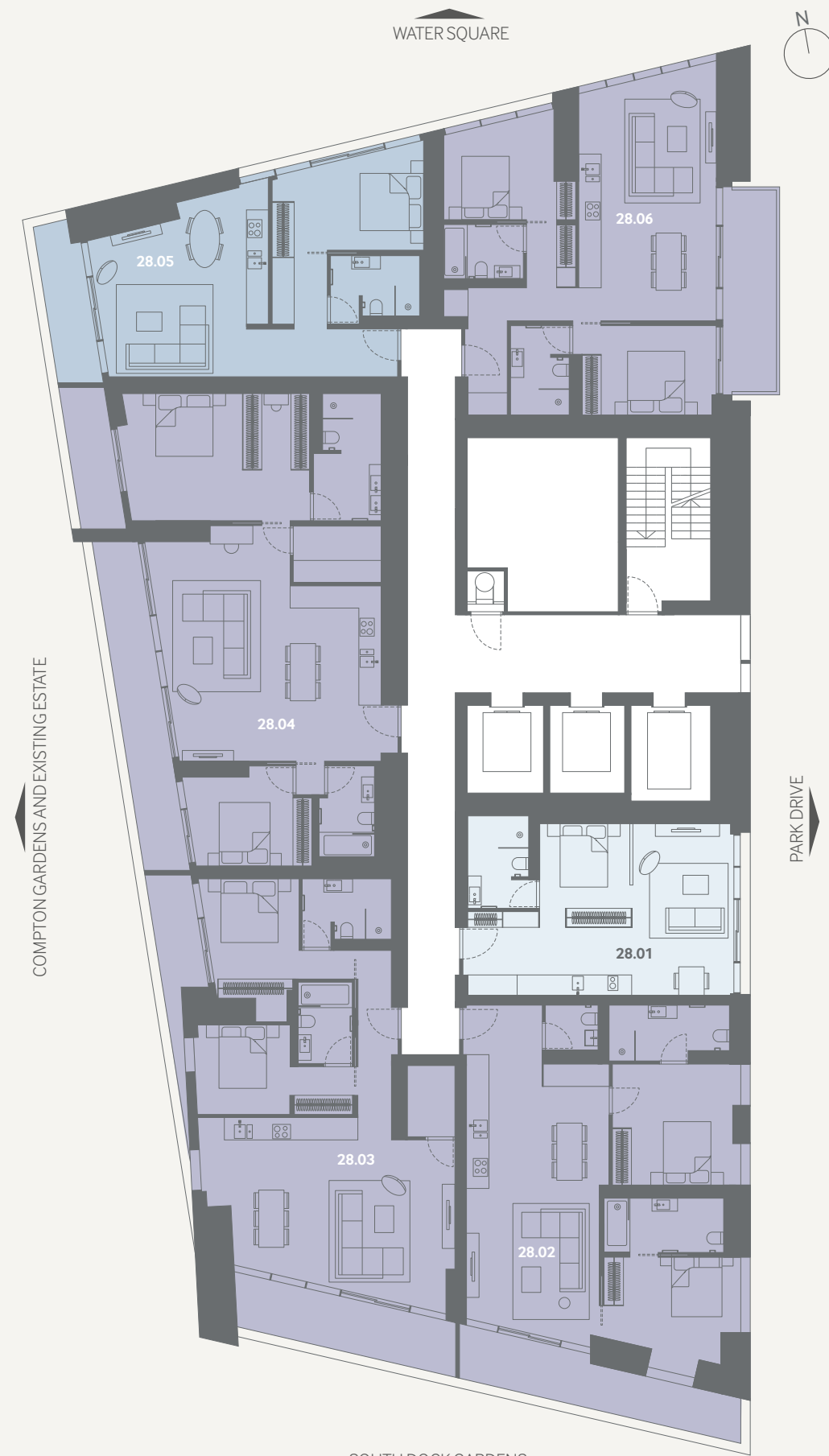
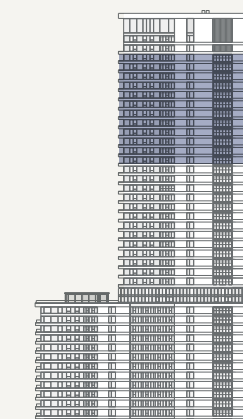
KEY

Studio	One Bedroom	Two Bedroom	Three Bedroom
--------	-------------	-------------	---------------

SITE PLAN



EAST ELEVATION



NOT TO SCALE

Floorplan measurements are approximate
Exact layout sizes may vary in accordance with the contract
Please speak to a Sales Consultant to receive an individual plan of your preferred apartment.



“As we embark on this next evolution, we still hold true to our original vision: to create vibrant, diverse and thriving communities, and to create lasting landmarks that express the values upon which our business is built: vision, inspiration, quality and resilience.”

Sir George Iacobescu CBE
Executive Chairman
Canary Wharf Group

Copyright © 2020 Canary Wharf Group plc. All rights reserved. No part of this publication may be reproduced, distributed, or transmitted in any form or by any means, including photocopying, recording, or other electronic or mechanical methods, without the prior written permission of the Canary Wharf Group plc.
MISREPRESENTATION ACT 1967 & WARNING TO POTENTIAL HOME BUYERS

Ten Park Drive Limited its subsidiaries and agents give notice that; i) these particulars are a general outline only, for the guidance of prospective purchasers, and do not constitute the whole or any part of an offer or contract; ii) the accuracy of any description, dimensions, references to condition, necessary permissions for use and occupation and other details contained herein are not to be considered material information and are not guaranteed and are not to be relied upon as statements of fact or representations for the purposes of purchasing a home and purchasers must satisfy themselves as to their accuracy having sought professional advice. iii) no liability is accepted in negligence or otherwise, for any loss arising from the use of these particulars; and iv) references to any plant, machinery equipment, services, fixtures or fittings at the property shall not constitute a representation (unless otherwise stated) as to its state or condition or that it is capable of fulfilling its intended function. Prospective purchasers should satisfy themselves as to the fitness of such items for their requirements. Fixtures and fittings may be replaced with items of a comparable quality without revision to these particulars. v) Pictorial images, drawings, computer generated images and accompanying captions are indicative and for illustrative purposes only and are not intended to constitute material information for the purposes of purchasing a home. vi) no employee of Ten Park Drive Limited or any of its associated companies or partnerships (and their Joint Agents where applicable) has any authority to make or give any representation or warranty or enter into any contract whatever in relation to the property and cannot be materially relied upon as such; December 2020. Subject to Contract.

View photography as of September 2020.

* Maps are for illustrative purposes only and not to scale.

Map represents existing and future developments.

Future developments are subject to planning approval.

Naming within Wood Wharf is subject to approval.