



# LANDMARK PINNACLE

LONDON E14





# WESTERN EUROPE'S TALLEST RESIDENTIAL ADDRESS

Soaring 239 metres\* into the sky above Europe's most dynamic business district, the Landmark Pinnacle designed by internationally renowned architects Squire and Partners, is a place to live like no other. Enjoying uninterrupted views to the east and west across London, and featuring three entire levels dedicated to a unique array of lifestyle facilities that complement perfectly appointed contemporary residences. This is London living at the very highest level.

LANDMARK PINNACLE

VIEW LOOKING WEST FROM THE 75TH FLOOR

\*AOD (ABOVE ORDNANCE DATUM)



# EUROPE'S HIGHEST PRIVATE CLUB AND TERRACE

LANDMARK PINNACLE

The breathtaking Club Terrace on level 75 is the largest private amenity space ever created at such an elevation in London. Never has there been a more extraordinary place from which to welcome the arrival of a new day, or relax over cocktails with friends, whilst enjoying one of the world's finest views.



# WELCOME TO LONDON'S MOST ELEVATED LIVING EXPERIENCE



The unique living experience at the Landmark Pinnacle starts the moment you arrive at a dramatic double-height entrance, embraced by the three buildings that form the Landmark enclave. Adjacent to the contemporary sweep of Pinnacle Park, with its crisp angles and verdant planting.



# UNIQUE ON EVERY LEVEL

LEVEL  
75



The Club Terrace, the highest private amenity space ever created in London.

LEVEL  
56



Gym and fitness suite, sumptuous Club Lounge and private bars and dining rooms.

LEVEL  
27



Private elevated park and garden.

LEVEL  
01



State-of-the-art cinema.



COMPUTER GENERATED IMAGES ARE INDICATIVE ONLY AND SUBJECT TO CHANGE.



ENJOY PRIVATE PREMIERES

LEVEL  
01

LANDMARK PINNACLE

8 — 9

Featuring state-of-the-art technology, the Private Cinema is the perfect place to enjoy everything from the latest blockbusters to major sporting events.

COMPUTER GENERATED IMAGE IS INDICATIVE ONLY AND SUBJECT TO CHANGE.



# TAKE A STROLL IN THE SKY

LANDMARK PINNACLE

The private park and garden occupying this entire level are like nothing London has ever seen before. Featuring paths that wind their way through a curated collection of hundreds of trees and plants, against a backdrop of spectacular city views. The perfect spaces in which to take a sunrise stroll, or to relax and enjoy the changing colours of sunset.

COMPUTER GENERATED IMAGE IS INDICATIVE ONLY AND SUBJECT TO CHANGE.

LEVEL  
27



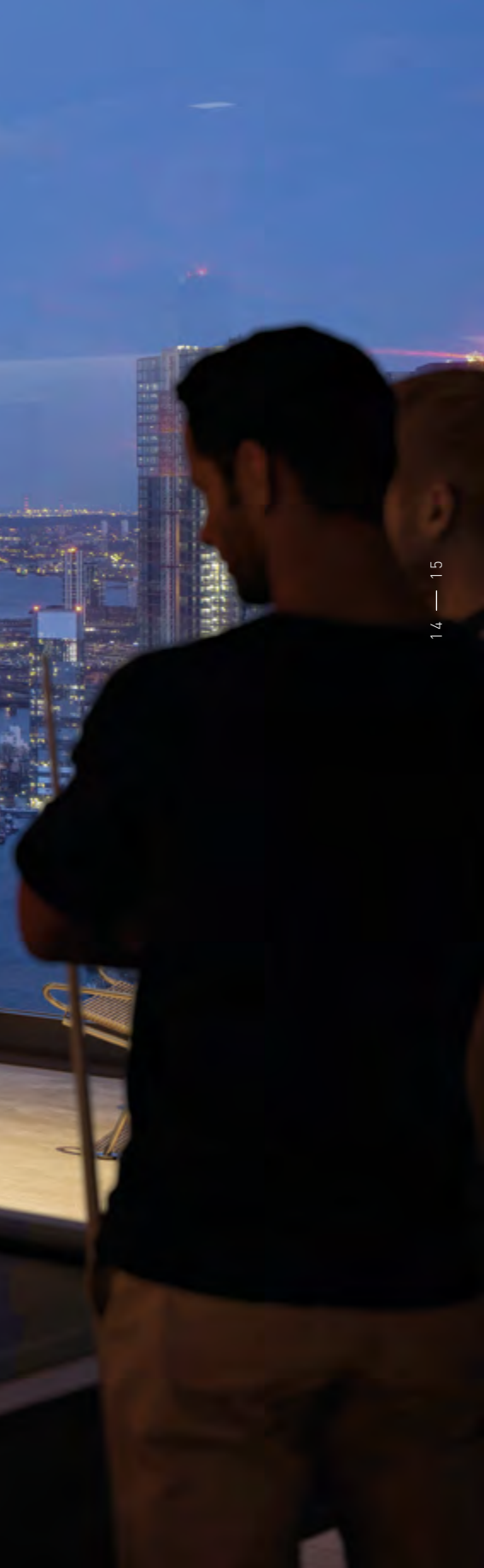


LEVEL  
27



FRAME THE PERFECT VIEW

LEVEL  
56



With an extraordinary view east over the shimmering skyline of Canary Wharf, the Club Lounge is a sumptuous and spectacular space in which to relax. Perfect for quiet contemplation over a morning coffee to evening drinks and a game of pool.

COMPUTER GENERATED IMAGE IS INDICATIVE ONLY AND SUBJECT TO CHANGE.

LANDMARK PINNACLE

14 — 15



LEVEL  
56

LANDMARK PINNACLE

16 — 17



# BROADEN YOUR CULINARY HORIZONS

No other Private Dining Room in London affords such a remarkable vista to accompany the finest cuisine. With its adjacent bar and seating for 12 guests, this must be London's ultimate dinner invitation.

LANDMARK PINNACLE

LEVEL  
56

COMPUTER GENERATED IMAGE IS INDICATIVE ONLY AND SUBJECT TO CHANGE.



RAISE YOUR PULSE

LEVEL  
56

LANDMARK PINNACLE

The state-of-the-art gym spans the entire west facing elevation of Level 56. Featuring floor to ceiling windows, never before has a cardio workout been accompanied by such a remarkable view of the capital.

COMPUTER GENERATED IMAGE IS INDICATIVE ONLY AND SUBJECT TO CHANGE.



ENJOY LONDON LIVING  
AT THE HIGHEST LEVEL

LEVEL  
75

LANDMARK PINNACLE

22 — 23

COMPUTER GENERATED IMAGE IS INDICATIVE ONLY AND SUBJECT TO CHANGE.



SEE FOREVER

LANDMARK  
PINNACLE  
LONDON E14

LANDMARK PINNACLE

24 — 25

With a vast sweeping bend of the River Thames to the west and the expansive waters of South Dock to the east, regardless of how London's skyline changes in the future, the Landmark Pinnacle will continue to enjoy one of the most spectacular, uninterrupted views that the city has ever seen.

COMPUTER GENERATED IMAGE IS INDICATIVE ONLY AND SUBJECT TO CHANGE.



# WELCOME TO A DIFFERENT WORLD

LANDMARK PINNACLE

The spacious double-height lobby lounge is the gateway to a lifestyle like no other. A perfect prelude to the unique suite of facilities and elegant residences that lie above it and home to a 24-hour concierge service.

COMPUTER GENERATED IMAGE IS INDICATIVE ONLY AND SUBJECT TO CHANGE.









KITCHEN | LEVELS 11-55

COMPUTER GENERATED IMAGE IS INDICATIVE ONLY AND SUBJECT TO CHANGE.





SUITE DINING AREA | LEVELS 11-55  
COMPUTER GENERATED IMAGE IS INDICATIVE ONLY AND SUBJECT TO CHANGE.



BEDROOM | LEVELS 11-55

COMPUTER GENERATED IMAGE IS INDICATIVE ONLY AND SUBJECT TO CHANGE.





LANDMARK PINNACLE

34 — 35

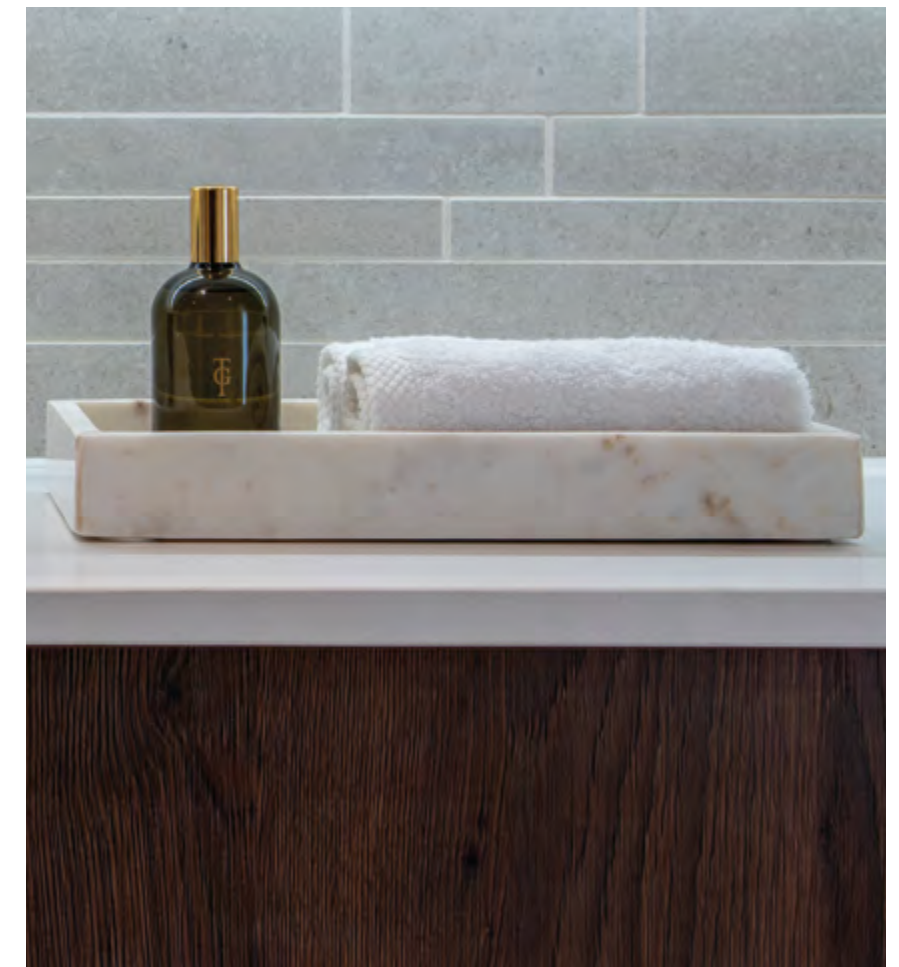
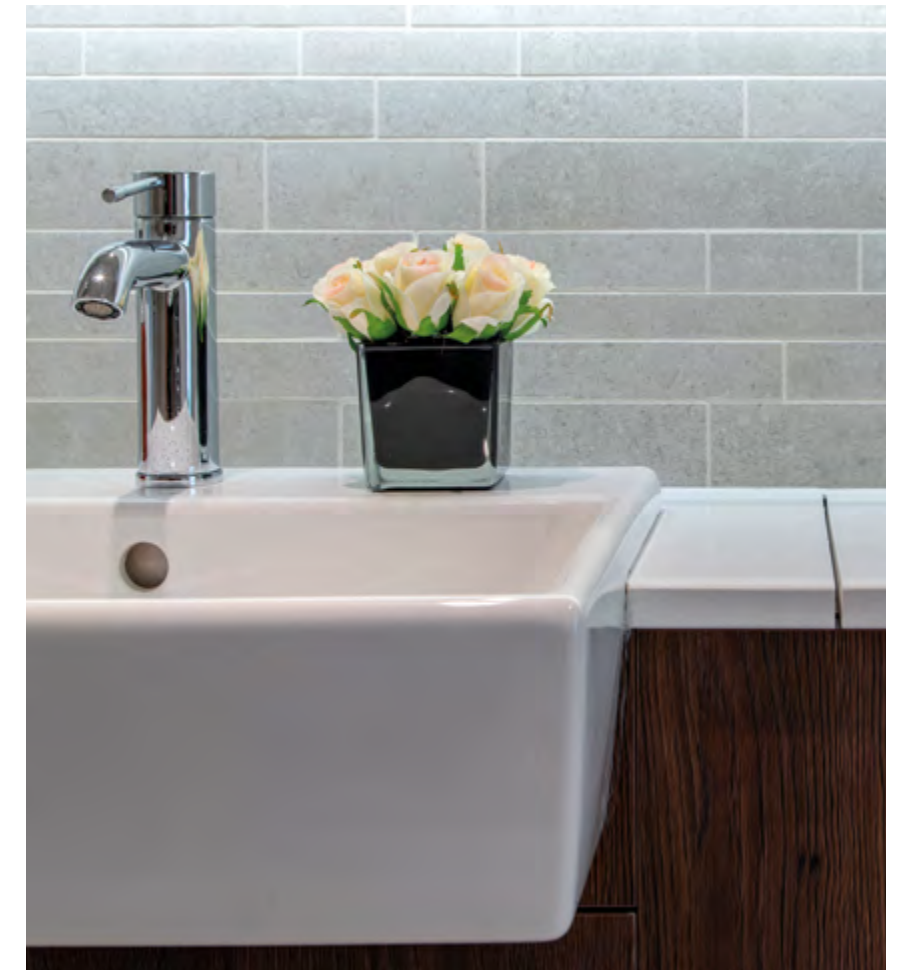
SUITE BEDROOM | LEVELS 11-55

COMPUTER GENERATED IMAGE IS INDICATIVE ONLY AND SUBJECT TO CHANGE.





BATHROOM | LEVELS 11-55  
SHOW APARTMENT PHOTOGRAPHY IS INDICATIVE ONLY.





LANDMARK  
PINNACLE  
LONDON E14



LANDMARK PINNACLE

38 — 39





LANDMARK PINNACLE

41

PINNACLE RESIDENCES  
LIVING AREA | LEVELS 57-73

COMPUTER GENERATED IMAGE IS INDICATIVE ONLY AND SUBJECT TO CHANGE.





PINNACLE RESIDENCES  
KITCHEN LIVING AREA | LEVELS 57-73

COMPUTER GENERATED IMAGE IS INDICATIVE ONLY AND SUBJECT TO CHANGE.





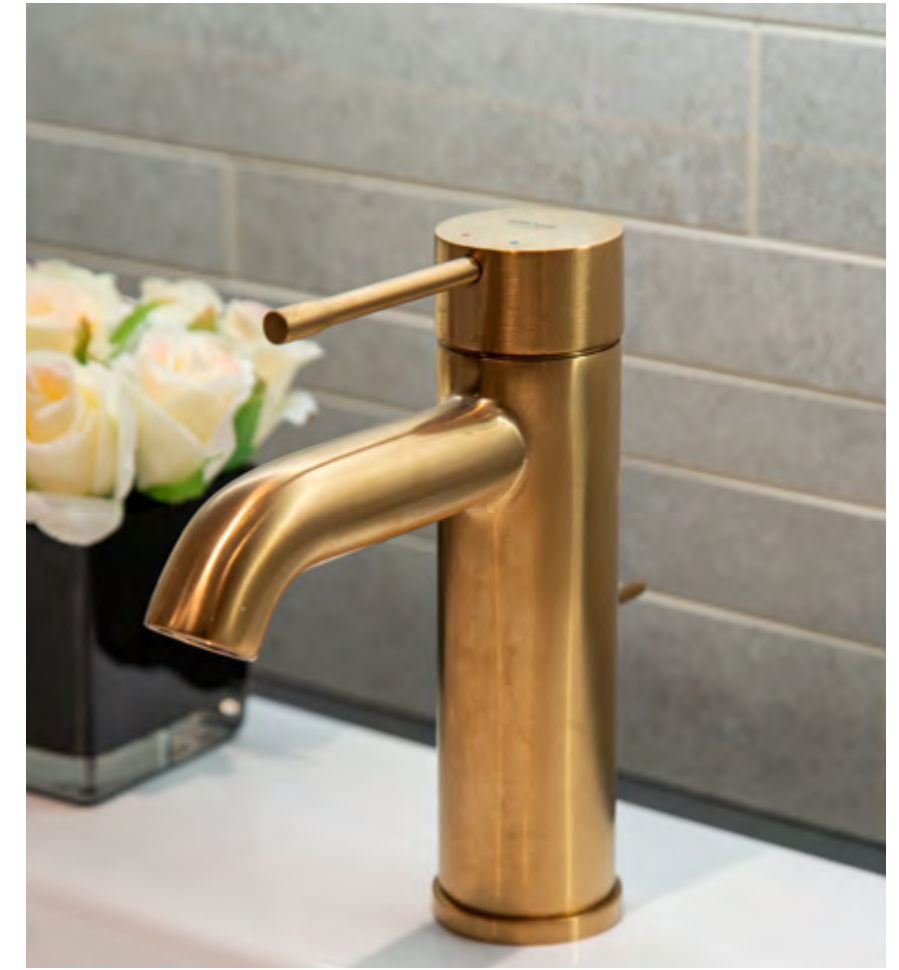
PINNACLE RESIDENCES  
BEDROOM | LEVELS 57-73

COMPUTER GENERATED IMAGE IS INDICATIVE ONLY AND SUBJECT TO CHANGE.





PINNACLE RESIDENCES  
BATHROOM | LEVELS 57-73  
SHOW APARTMENT PHOTOGRAPHY IS INDICATIVE ONLY.







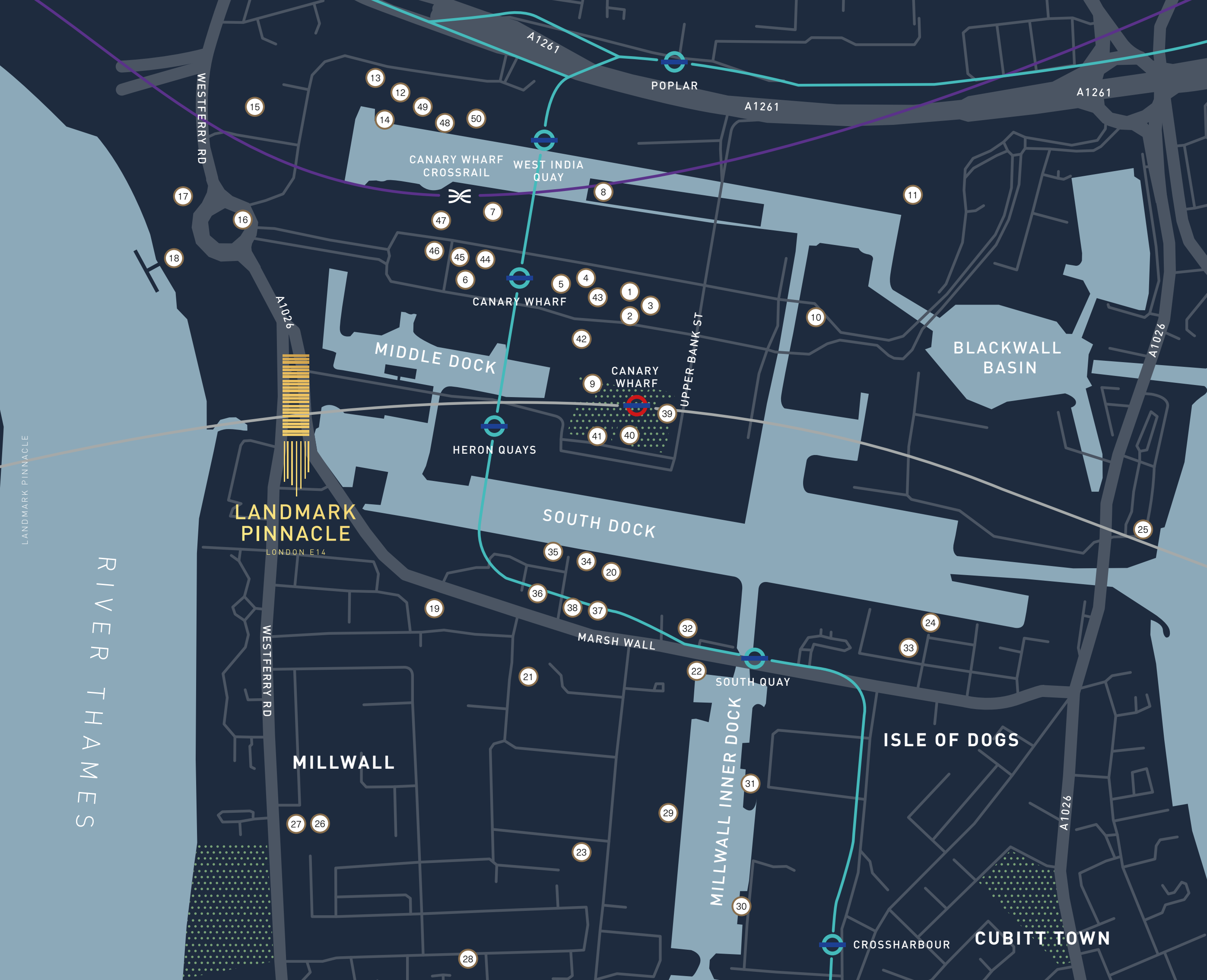
LANDMARK PINNACLE

67 — 87

PINNACLE RESIDENCES  
WINTER GARDEN | LEVELS 57-73

COMPUTER GENERATED IMAGE IS INDICATIVE ONLY AND SUBJECT TO CHANGE.





- 1 ROKA
- 2 THE IVY
- 3 GOLDSMITHS
- 4 TIFFANY & CO.
- 5 PAUL SMITH
- 6 BOISDALE
- 7 IBERICA
- 8 BIG EASY
- 9 NOTES COFFEE ROASTERS
- 10 ROCKET
- 11 BILLINGSGATE MARKET
- 12 RUM & SUGAR
- 13 MUSEUM OF LONDON DOCKLANDS
- 14 ST PETER'S BARGE
- 15 REEBOK CROSSFIT THAMES
- 16 LUMINIS BEAUTY SPA
- 17 CAFE BRERA
- 18 28 WEST BAR
- 19 BOKAN 38 BAR & 39 ROOFTOP
- 20 GOODMAN
- 21 BUBBLEKICKZ BUBBLE FOOTBALL
- 22 CAPEESH SKY BAR
- 23 TIAN TIAN ORIENTAL SUPERMARKET
- 24 BELLA COSA
- 25 THE GUN, DOCKLANDS
- 26 CHINATOWN
- 27 THE TOOKE ARMS
- 28 TILLER LEISURE CENTRE
- 29 SMOKE LAB
- 30 LOTUS CHINESE RESTAURANT
- 31 BUBBLE TEA
- 32 TESCO EXPRESS
- 33 YUHOKI JAPANESE RESTAURANT
- 34 HAZEV
- 35 LEBANESE STREET FOOD
- 36 BENGAL QUAY RESTAURANT
- 37 TWORUBA BAR CANARY WHARF
- 38 CINNAMON RESTAURANT
- 39 THE ATHENIAN
- 40 CAFE BRERA
- 41 LE PAIN QUOTIDIEN
- 42 CARLUCCIO'S
- 43 GRANDSTAND BAR
- 44 ZARA
- 45 MASSIMO DUTTI
- 46 IBERICA LA TERRAZA
- 47 THE PAGINATION
- 48 MOUSE TAIL COFFEE STORIES
- 49 PIZZA PILGRIMS
- 50 BURGER & LOBSTER

LANDMARK PINNACLE

RIVER THAMES

LANDMARK PINNACLE  
LONDON E14

MAP IS INDICATIVE ONLY AND NOT TO SCALE.





Canary Wharf boasts five shopping malls providing 120 shops ranging from small boutiques and designer labels to established English luxury brands.

## MORE IN STORE

LIFESTYLE IMAGERY IS INDICATIVE ONLY.

Premium lifestyle stores include Aspinall of London and Carat jewellery. There are quintessential menswear names such as Hackett, Dunhill and Church's, and brands such as Kiehl's and Blink Brow Bar who have chosen Canary Wharf as the location for their first standalone UK stores. You can also find opportunities in Canary Wharf's malls to keep fit, buy original British art or restock your fridge at the country's largest Waitrose supermarket.



# SOCIAL SURROUNDINGS



Canary Wharf is alive with opportunities to enjoy a social life as varied and exciting as London has ever had to offer. Watch the latest blockbusters with friends in the sumptuous surroundings of a boutique cinema. Sip sunset cocktails prepared by some of the capital's finest mixologists. Meet up for an early morning espresso or a late Sunday brunch, at one of a myriad choice of coffee bars and eateries. The possibilities are almost endless, and for those living at the Landmark Pinnacle this whole lifestyle will literally be on the doorstep.

LIFESTYLE IMAGERY IS INDICATIVE ONLY.





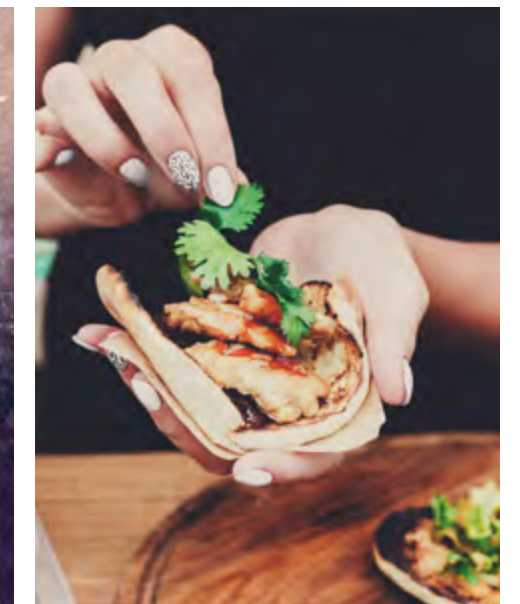
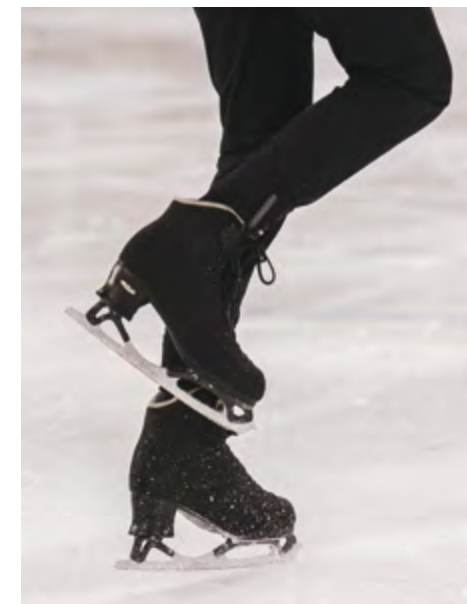
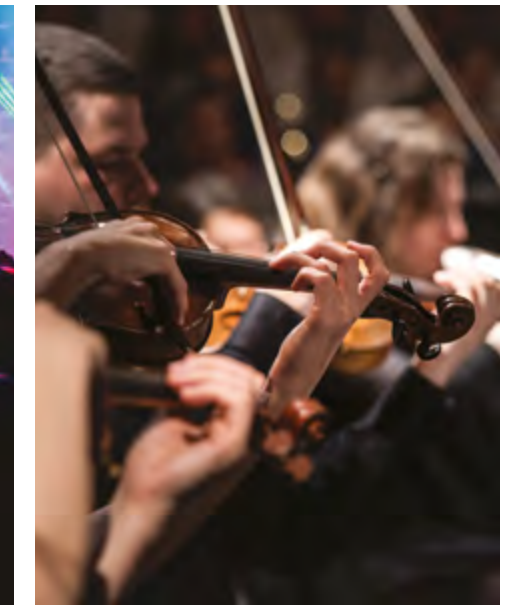


CANDIDARTY PIVNACHE

## A FULL DIARY

This is a place alive with inspiration for those who enjoy being inspired.

Canary Wharf is alive with events and exhibitions all year round. Outdoor music performances fill the summer air and the glow of a thousand lights marks the annual winter illuminations. There are outdoor art exhibitions, fascinating classes to attend at 'The Learning Lab', endless delicacies to try at the weekly Wood Wharf 'Street Bites' market, and the annual spectacle of one of the world's most famous marathons, wending its way through the heart of the neighbourhood. This is a place alive with inspiration for those who enjoy being inspired.



LIFESTYLE IMAGERY IS INDICATIVE ONLY.

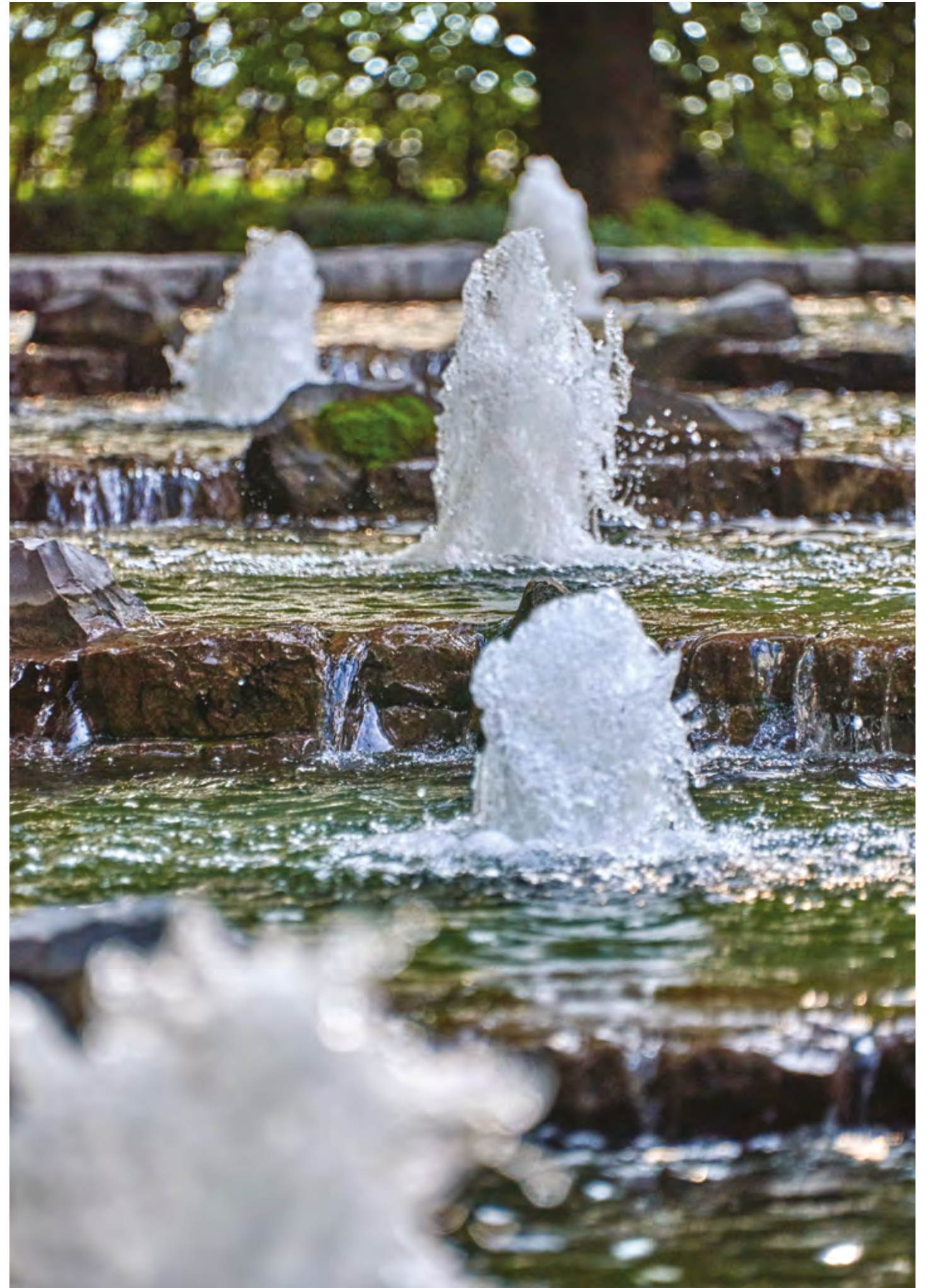




## THE SPACE TO ENJOY LIFE

The surrounding area is home to a vast choice of open spaces, from sweeping riverside walks to verdant parks and gardens. With many of these playing host to events and activities, from weekly farmers' markets to outdoor summer concerts. For those seeking an active life, the 568 acre Queen Elizabeth Olympic Park is just 10 minutes away, and features an unrivalled array of world-class sporting facilities.

LIFESTYLE IMAGERY IS INDICATIVE ONLY.





J.P.Morgan

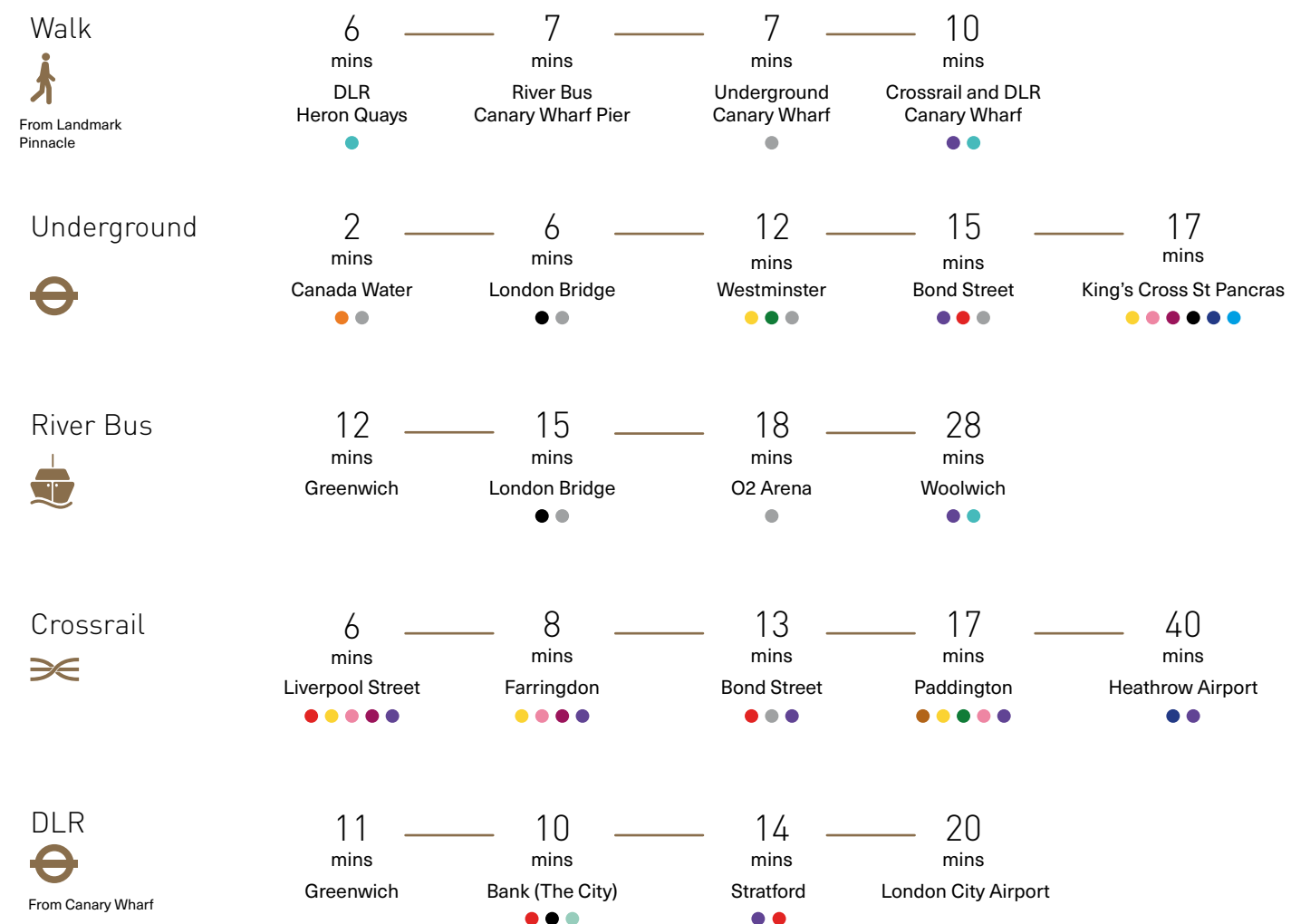
LANDMARK PINNACLE



Key to lines

- Bakerloo
- Central
- Circle
- District
- Hammersmith & City
- Jubilee
- Metropolitan
- Northern
- Piccadilly
- Victoria
- Waterloo & City
- DLR
- London Overground
- Elizabeth/Crossrail

## ALL THE RIGHT CONNECTIONS



ALL TRAVEL TIMES ARE APPROXIMATE AND TAKEN FROM TFL.GOV.UK, THAMESCLIPPERS.COM, CROSSRAIL.CO.UK/ROUTE AND GOOGLE.CO.UK/MAPS. LIFESTYLE PHOTOGRAPHY IS INDICATIVE ONLY. CROSSRAIL PROPOSED OPENING 2022.





STRATFORD

STRATFORD

VICTORIA PARK

QUEEN ELIZABETH OLYMPIC PARK

MILE END PARK

HACKNEY

FARRINGDON

KING'S CROSS  
ST PANCRAS

TOTTENHAM COURT ROAD

LIVERPOOL STREET

WHITECHAPEL

CITY OF LONDON

ALDGATE

LANDMARK PINNACLE

POPLAR

LONDON CITY AIRPORT

WATERLOO

LONDON BRIDGE

WESTMINSTER

ELEPHANT AND CASTLE

CANARY WHARF

ISLE OF DOGS

BERMONDSEY

SOUTHWARK PARK

MUDCHUTE PARK AND FARM

RIVER THAMES

BURGESS PARK

GREENWICH PARK

NEW CROSS

BLACKHEATH



# WELL EDUCATED

LANDMARK PINNACLE



London is one of the world's greatest centres of education, and more than twenty of its finest universities and colleges are located within 45 minutes of the Landmark Pinnacle. Including Imperial College, the London School of Economics and the new UCL campus at Stratford. Leading their fields in a vast array of subjects, from science and technology to drama to dance.

#### TRAVEL TIMES BY TUBE

University of Westminster	25 mins
King's College London	26 mins
London School of Economics	28 mins
University College London	29 mins
Imperial College London	33 mins
Central Saint Martins	34 mins

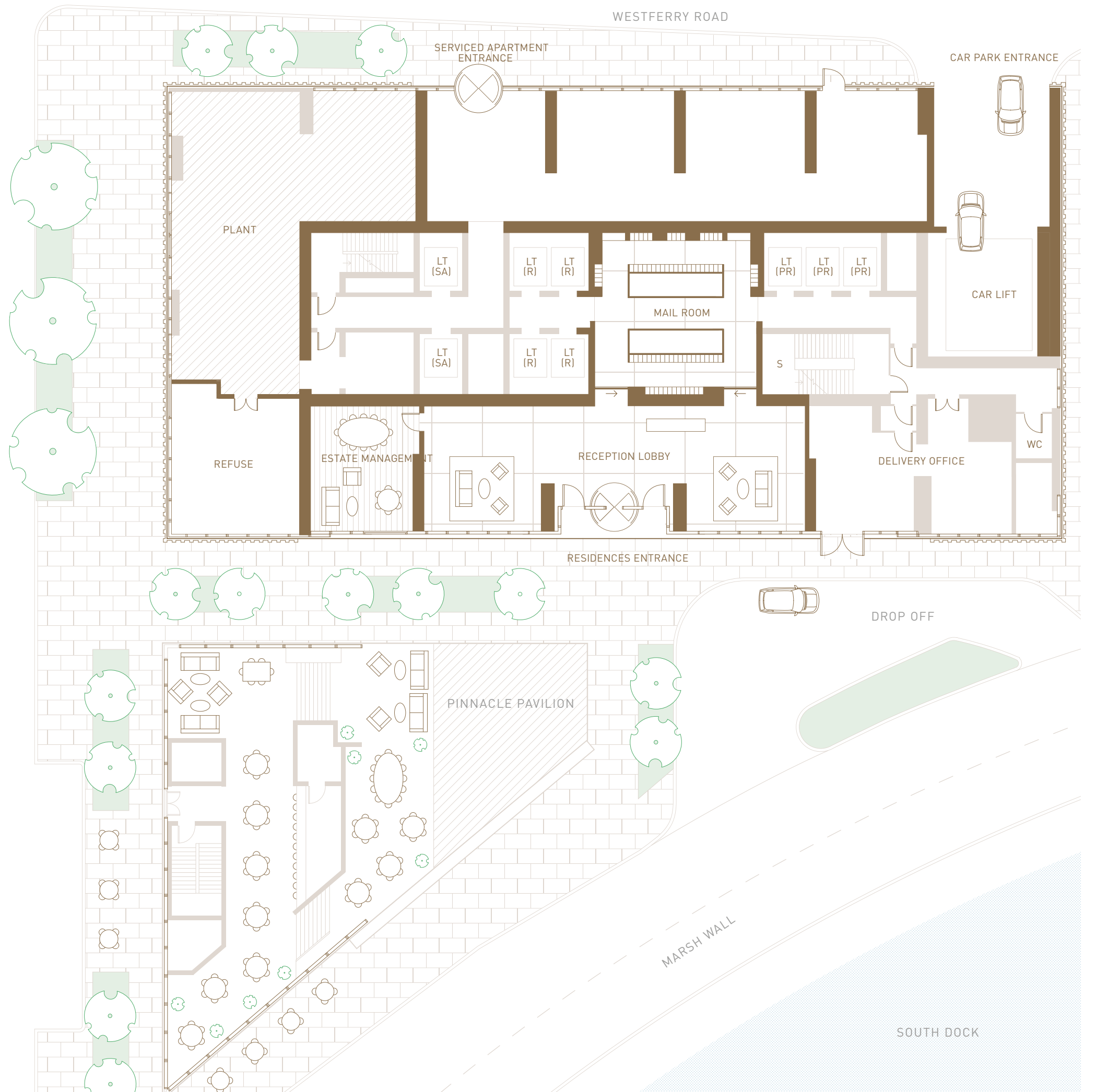
TRAVEL TIMES START FROM CANARY WHARF STATION AND ARE TAKEN FROM [GOOGLE.CO.UK/MAPS](https://www.google.co.uk/maps)



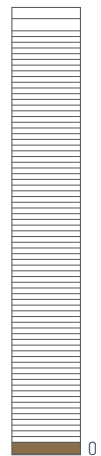
LIFESTYLE IMAGERY IS INDICATIVE ONLY.



# GROUND LEVEL AMENITIES



LANDMARK PINNACLE



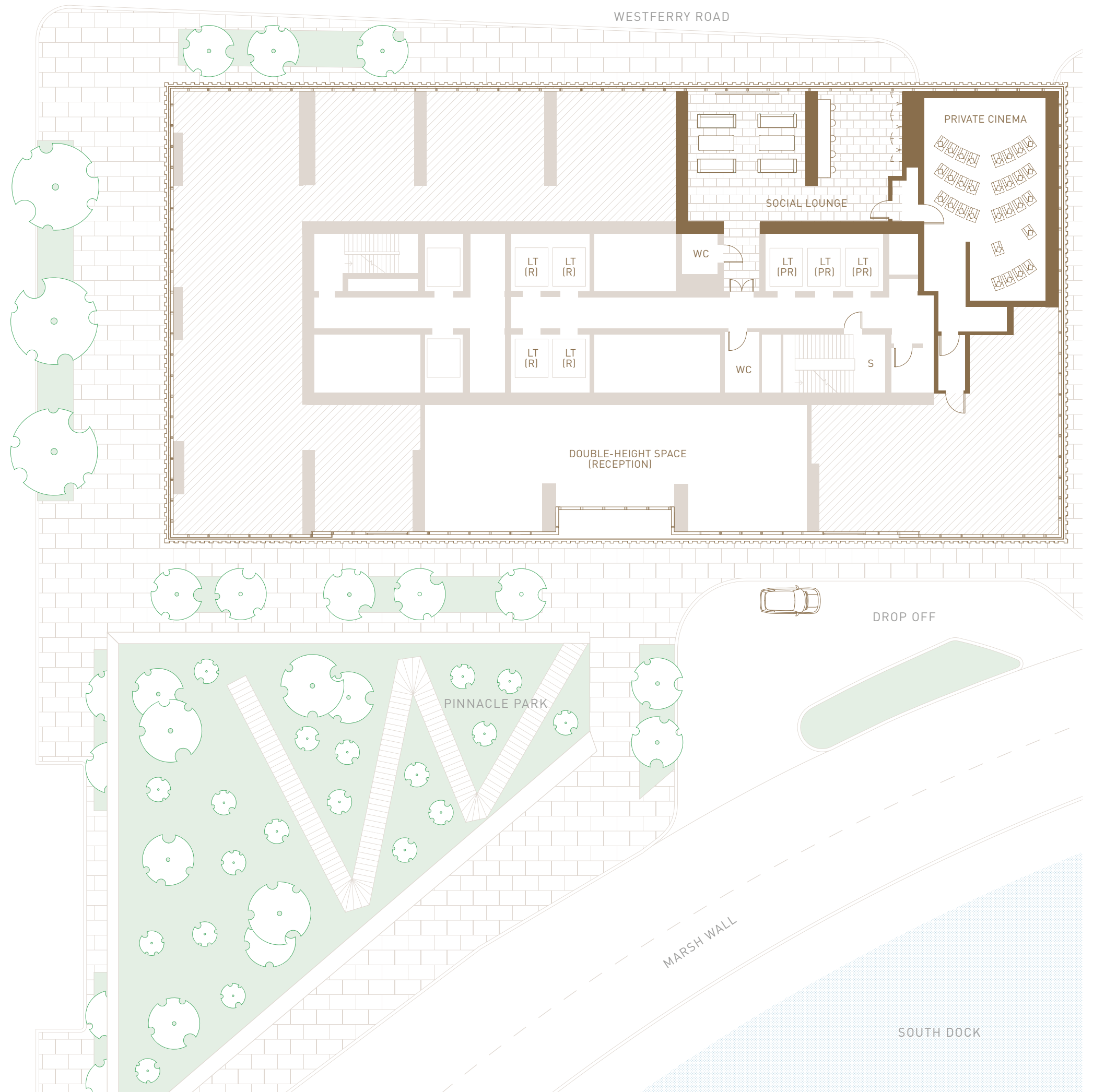
RECEPTION LOBBY

- LT(PR) LIFT (PINNACLE RESIDENCES)
- LT(R) LIFT (RESIDENCES)
- LT(SA) LIFT (SERVICED APARTMENTS)
- S STAIRS

FLOOR DESIGNS AND LAYOUTS ARE INDICATIVE ONLY AND MAY CHANGE. THE SPECIFICATION OF THE AREAS IS THE ANTICIPATED SPECIFICATION AS AT THE DATE THIS BROCHURE WAS PREPARED, BUT MAY BE SUBJECT TO CHANGE IN ACCORDANCE WITH PERMITTED VARIANCES UNDER THE APARTMENT SALES CONTRACTS. ALL SALES REMAIN SUBJECT TO CONTRACT. ALL INFORMATION REGARDING PROSPECTIVE AMENITY PROVISIONS REPRESENTS CURRENT INTENTION ONLY AND THE FINAL PROVISION OF AMENITY MAY CHANGE IN ACCORDANCE WITH PERMITTED VARIANCES UNDER THE APARTMENT SALES CONTRACTS. PLEASE CONSULT YOUR SALES CONTRACT FOR INFORMATION. COMPUTER GENERATED IMAGE IS INDICATIVE ONLY



# LEVEL 1 AMENITIES



LANDMARK PINNACLE



PRIVATE CINEMA

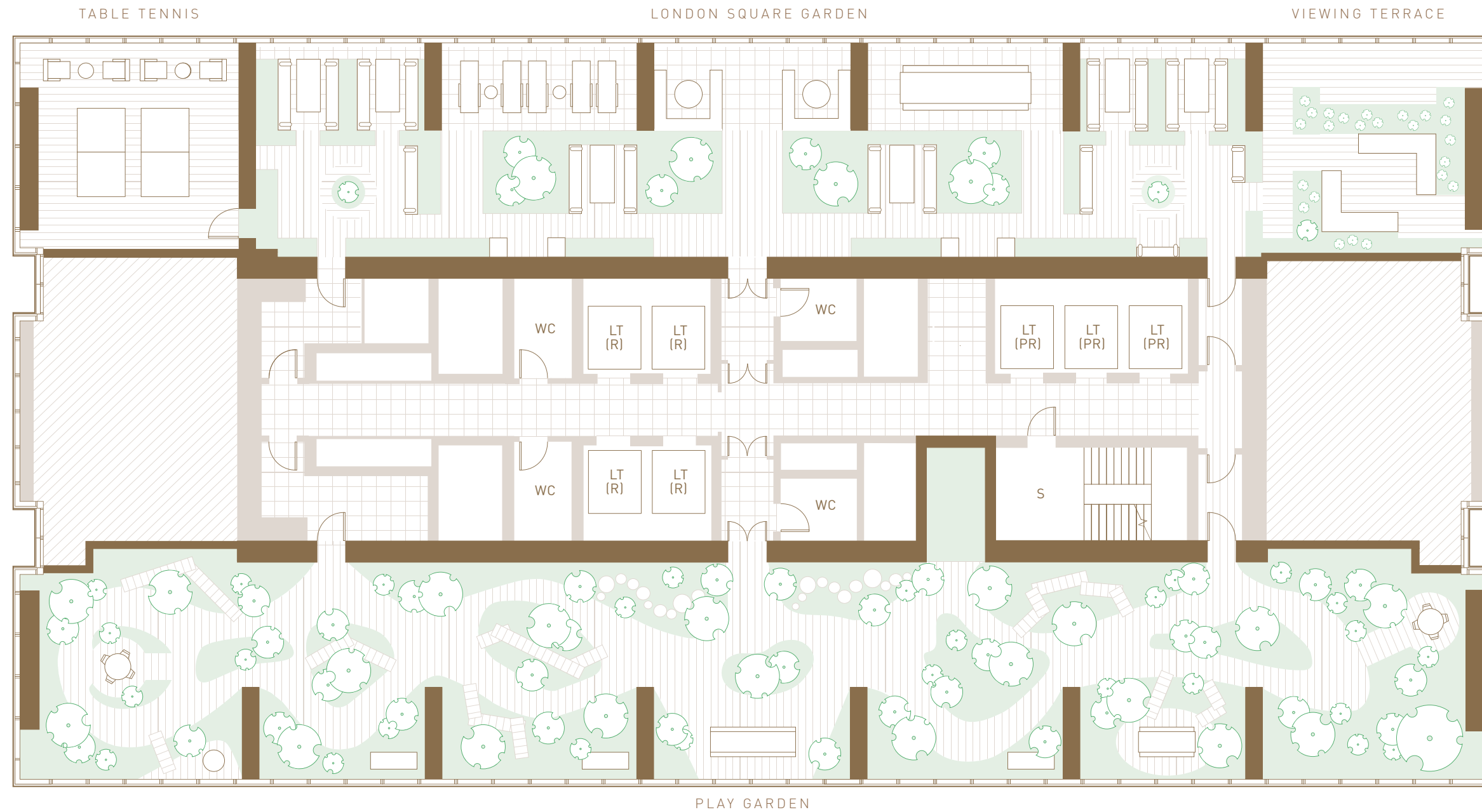
- LT(PR) LIFT (PINNACLE RESIDENCES)
- LT(R) LIFT (RESIDENCES)
- LT(SA) LIFT (SERVICED APARTMENTS)
- S STAIRS
- WC TOILET

FLOOR DESIGNS AND LAYOUTS ARE INDICATIVE ONLY AND MAY CHANGE. THE SPECIFICATION OF THE AREAS IS THE ANTICIPATED SPECIFICATION AS AT THE DATE THIS BROCHURE WAS PREPARED, BUT MAY BE SUBJECT TO CHANGE IN ACCORDANCE WITH PERMITTED VARIANCES UNDER THE APARTMENT SALES CONTRACTS. ALL SALES REMAIN SUBJECT TO CONTRACT. ALL INFORMATION REGARDING PROSPECTIVE AMENITY PROVISIONS REPRESENTS CURRENT INTENTION ONLY AND THE FINAL PROVISION OF AMENITY MAY CHANGE IN ACCORDANCE WITH PERMITTED VARIANCES UNDER THE APARTMENT SALES CONTRACTS. PLEASE CONSULT YOUR SALES CONTRACT FOR INFORMATION. COMPUTER GENERATED IMAGE IS INDICATIVE ONLY



# LEVEL 27 AMENITIES

PANORAMA WEST: CITY OF LONDON / RIVER THAMES



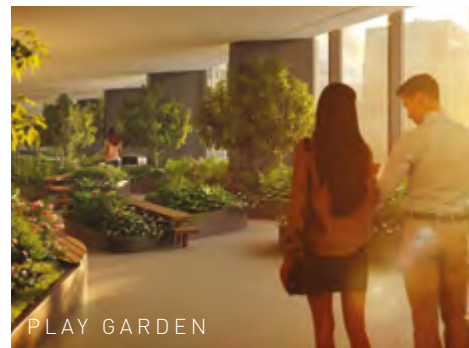
PANORAMA EAST: CANARY WHARF / SOUTH DOCK

LANDMARK PINNACLE

70 — 71



LONDON SQUARE GARDEN



PLAY GARDEN



27

- LT(PR) LIFT (PINNACLE RESIDENCES)
- LT(R) LIFT (RESIDENCES)
- LT(SA) LIFT (SERVICED APARTMENTS)
- S STAIRS
- WC TOILET

FLOOR DESIGNS AND LAYOUTS ARE INDICATIVE ONLY AND MAY CHANGE. THE SPECIFICATION OF THE AREAS IS THE ANTICIPATED SPECIFICATION AS AT THE DATE THIS BROCHURE WAS PREPARED, BUT MAY BE SUBJECT TO CHANGE IN ACCORDANCE WITH PERMITTED VARIANCES UNDER THE APARTMENT SALES CONTRACTS. ALL SALES REMAIN SUBJECT TO CONTRACT. ALL INFORMATION REGARDING PROSPECTIVE AMENITY PROVISIONS REPRESENTS CURRENT INTENTION ONLY AND THE FINAL PROVISION OF AMENITY MAY CHANGE IN ACCORDANCE WITH PERMITTED VARIANCES UNDER THE APARTMENT SALES CONTRACTS. PLEASE CONSULT YOUR SALES CONTRACT FOR INFORMATION. COMPUTER GENERATED IMAGES ARE INDICATIVE ONLY.



# LEVEL 56 AMENITIES

PANORAMA WEST: CITY OF LONDON / RIVER THAMES



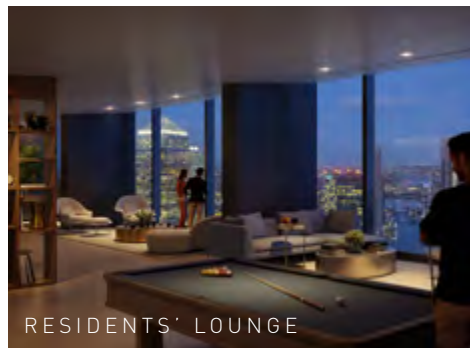
PANORAMA EAST: CANARY WHARF / SOUTH DOCK

LANDMARK PINNACLE

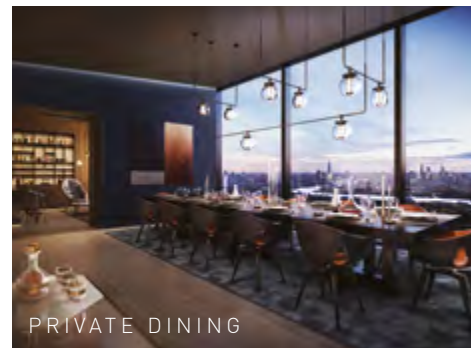
72 — 73



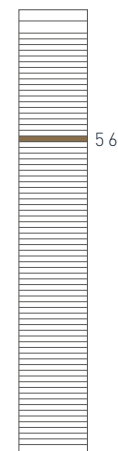
RESIDENTS' GYM



RESIDENTS' LOUNGE



PRIVATE DINING



56

- LT(PR) LIFT (PINNACLE RESIDENCES)
- LT(R) LIFT (RESIDENCES)
- LT(SA) LIFT (SERVICED APARTMENTS)
- S STAIRS
- WC TOILET

FLOOR DESIGNS AND LAYOUTS ARE INDICATIVE ONLY AND MAY CHANGE. THE SPECIFICATION OF THE AREAS IS THE ANTICIPATED SPECIFICATION AS AT THE DATE THIS BROCHURE WAS PREPARED, BUT MAY BE SUBJECT TO CHANGE IN ACCORDANCE WITH PERMITTED VARIANCES UNDER THE APARTMENT SALES CONTRACTS. ALL SALES REMAIN SUBJECT TO CONTRACT. ALL INFORMATION REGARDING PROSPECTIVE AMENITY PROVISIONS REPRESENTS CURRENT INTENTION ONLY AND THE FINAL PROVISION OF AMENITY MAY CHANGE IN ACCORDANCE WITH PERMITTED VARIANCES UNDER THE APARTMENT SALES CONTRACTS. PLEASE CONSULT YOUR SALES CONTRACT FOR INFORMATION. COMPUTER GENERATED IMAGES ARE INDICATIVE ONLY.

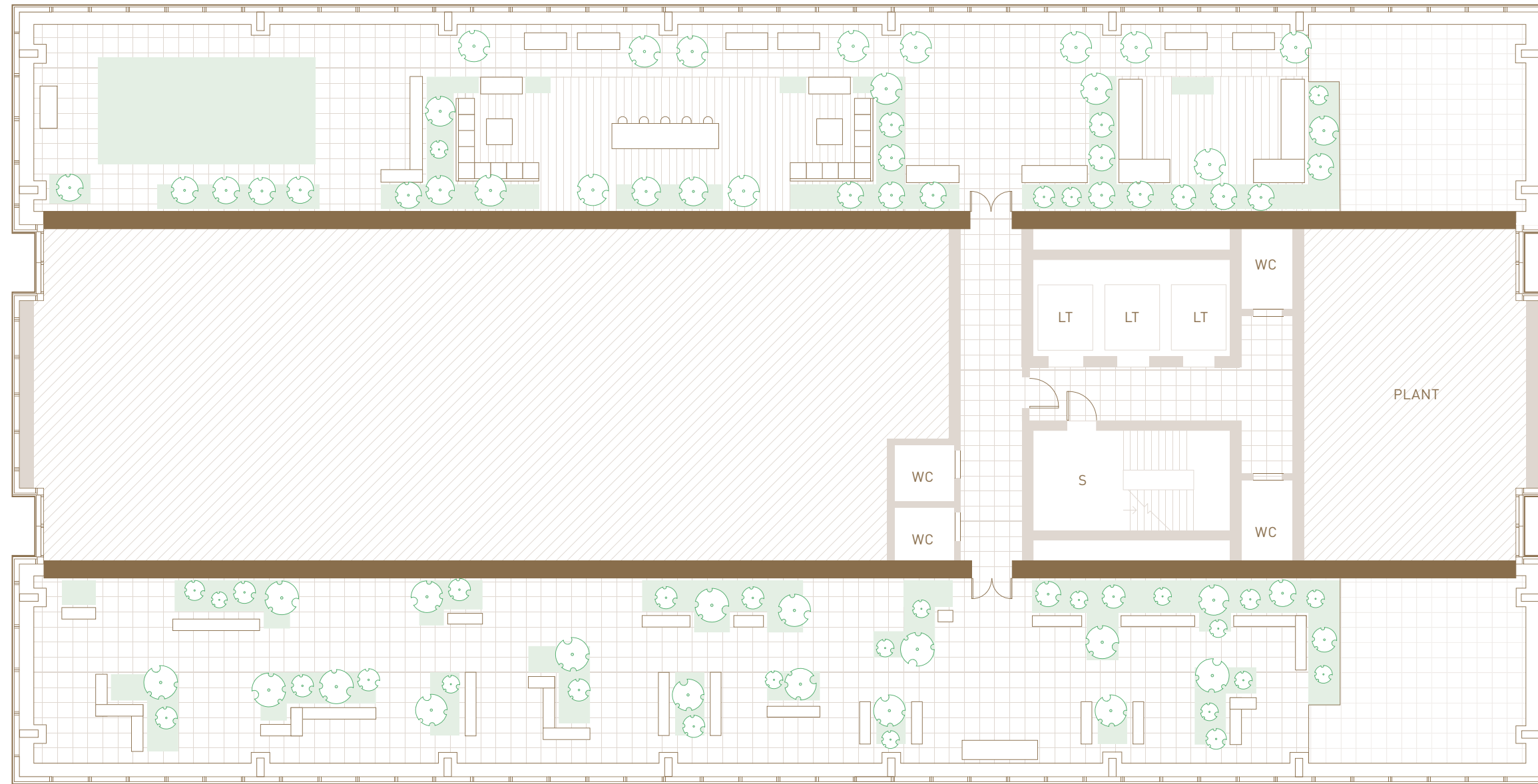


# LEVEL 75 AMENITIES

PANORAMA WEST: CITY OF LONDON / RIVER THAMES



WEST (ROOF) TERRACE

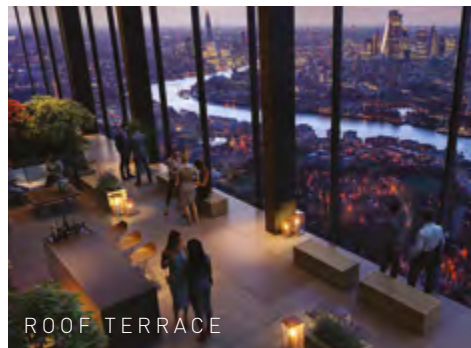


EAST (ROOF) TERRACE

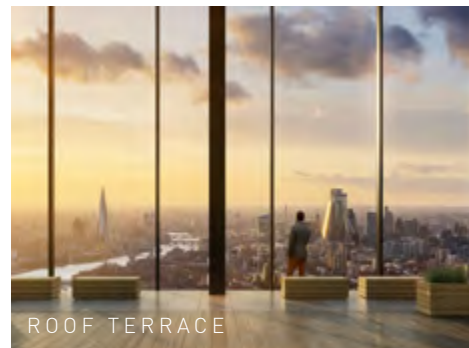
PANORAMA EAST: CANARY WHARF / SOUTH DOCK

LANDMARK PINNACLE

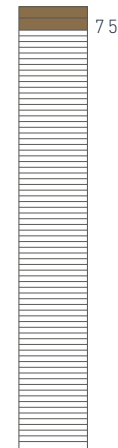
74 — 75



ROOF TERRACE



ROOF TERRACE



- LT LIFT
- S STAIRS
- WC TOILET
- WF WATER FEATURE

FLOOR DESIGNS AND LAYOUTS ARE INDICATIVE ONLY AND MAY CHANGE. THE SPECIFICATION OF THE AREAS IS THE ANTICIPATED SPECIFICATION AS AT THE DATE THIS BROCHURE WAS PREPARED, BUT MAY BE SUBJECT TO CHANGE IN ACCORDANCE WITH PERMITTED VARIANCES UNDER THE APARTMENT SALES CONTRACTS. ALL SALES REMAIN SUBJECT TO CONTRACT. ALL INFORMATION REGARDING PROSPECTIVE AMENITY PROVISIONS REPRESENTS CURRENT INTENTION ONLY AND THE FINAL PROVISION OF AMENITY MAY CHANGE IN ACCORDANCE WITH PERMITTED VARIANCES UNDER THE APARTMENT SALES CONTRACTS. PLEASE CONSULT YOUR SALES CONTRACT FOR INFORMATION. COMPUTER GENERATED IMAGES ARE INDICATIVE ONLY.



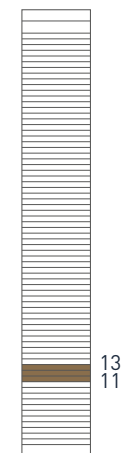
# RESIDENCES LEVELS 11-13

PANORAMA WEST: CITY OF LONDON / RIVER THAMES



PANORAMA EAST: CANARY WHARF / SOUTH DOCK

SUITE	ONE BEDROOM		TWO BEDROOM
TYPE A	TYPE B	TYPE C	TYPE B
Living Area 5.4 x 7.3m	Living Area 3.7 x 5.6m	Living Area 3.5 x 7.2m	Living Area 7.0 x 4.8m
Total Area 39.8 sq m/428 sq ft	Bedroom 2.9 x 3.6m	Bedroom 2.9 x 3.6m	Bedroom 1 3.8 x 3.7m
	Internal Area 48.3 sq m/520 sq ft	Internal Area 49.3 sq m/531 sq ft	Bedroom 2 3.9 x 3.5m
	Winter Garden 10.0 sq m/108 sq ft	Winter Garden 4.0 sq m/43 sq ft	Total Area 79.9 sq m/860 sq ft
	Total Area 58.3 sq m/628 sq ft	Total Area 53.3 sq m/574 sq ft	



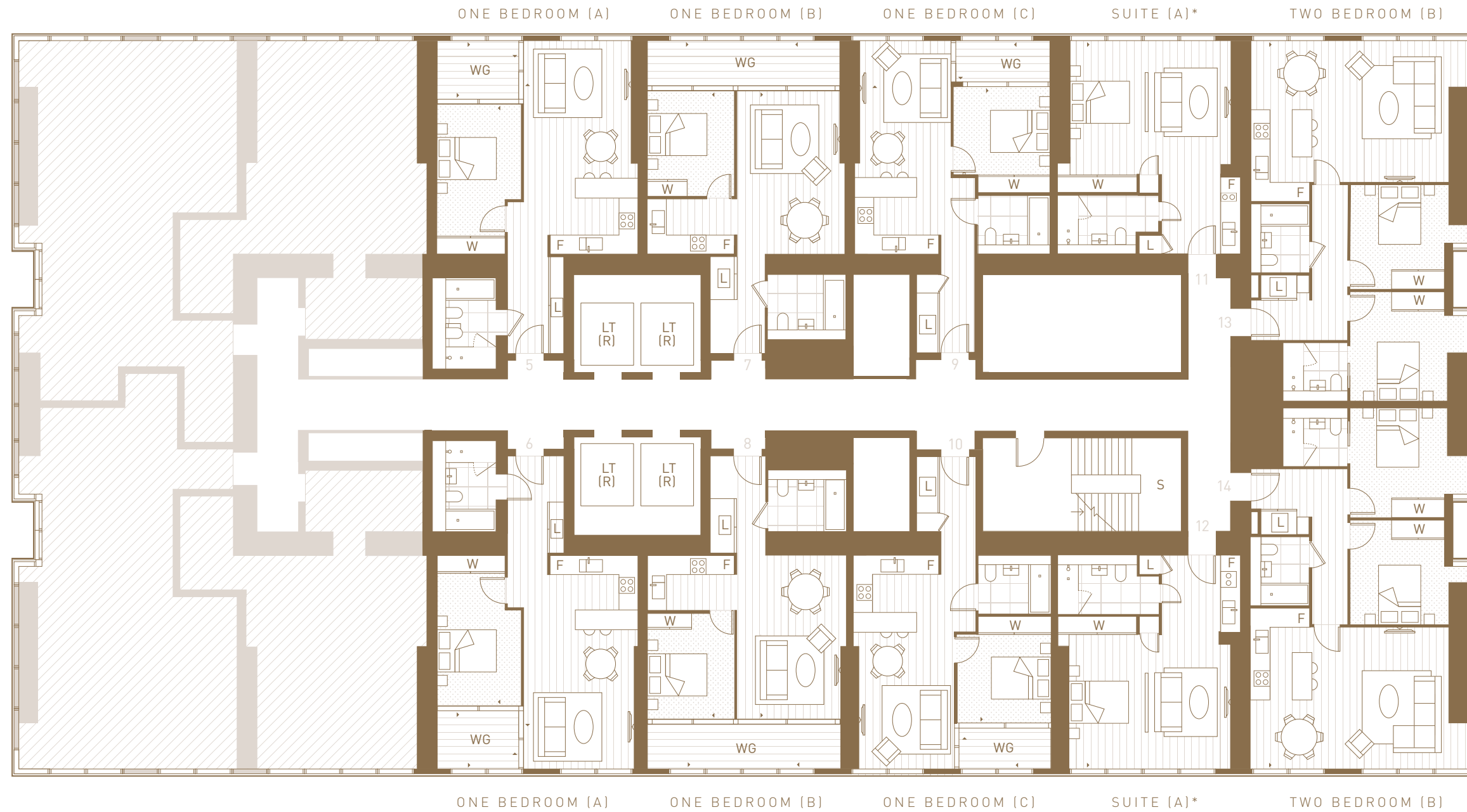
- F FRIDGE
- L LAUNDRY
- LT(PR) LIFT (PINNACLE RESIDENCES)
- S STAIRS
- W WARDROBE
- WG WINTER GARDEN

FLOOR DESIGNS AND LAYOUTS ARE INDICATIVE ONLY AND MAY CHANGE. TOTAL AREA SHOWS AVERAGE FOR THE TYPE. THE SPECIFICATION OF THE AREAS IS THE ANTICIPATED SPECIFICATION AS AT THE DATE THIS BROCHURE WAS PREPARED, BUT MAY BE SUBJECT TO CHANGE IN ACCORDANCE WITH PERMITTED VARIANCES UNDER THE APARTMENT SALES CONTRACTS. ALL SALES REMAIN SUBJECT TO CONTRACT. ALL INFORMATION REGARDING PROSPECTIVE AMENITY PROVISIONS REPRESENTS CURRENT INTENTION ONLY AND THE FINAL PROVISION OF AMENITY MAY CHANGE IN ACCORDANCE WITH PERMITTED VARIANCES UNDER THE APARTMENT SALES CONTRACTS. PLEASE CONSULT YOUR SALES CONTRACT FOR INFORMATION.



# RESIDENCES LEVELS 14-26

PANORAMA WEST: CITY OF LONDON / RIVER THAMES



PANORAMA EAST: CANARY WHARF / SOUTH DOCK

## SUITE

### TYPE A

Living Area  
5.4 x 7.3m

Total Area  
39.6 sq m/426 sq ft

\*TYPE C  
Type C will replace certain  
Type A Suites on floors  
18-26. Please check with  
your Sales Consultant.

## ONE BEDROOM

### TYPE A

Living Area  
3.9 x 7.3m

Bedroom  
2.9 x 5.2m

Internal Area  
54.4 sq m/586 sq ft

Winter Garden  
5.0 sq m/54 sq ft

Total Area  
59.4 sq m/640 sq ft

### TYPE B

Living Area  
3.5 x 5.6m

Bedroom  
2.9 x 3.6m

Internal Area  
48.3 sq m/520 sq ft

Winter Garden  
10.0 sq m/108 sq ft

Total Area  
58.3 sq m/628 sq ft

### TYPE C

Living Area  
3.5 x 7.3m

Bedroom  
2.9 x 3.6m

Internal Area  
49.2 sq m/530 sq ft

Winter Garden  
4.6 sq m/50 sq ft

Total Area  
53.8 sq m/580 sq ft

## TWO BEDROOM

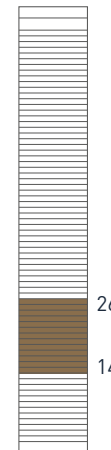
### TYPE B

Living Area  
7.0 x 4.8m

Bedroom 1  
3.8 x 3.7m

Bedroom 2  
3.9 x 3.5m

Total Area  
79.9 sq m/860 sq ft



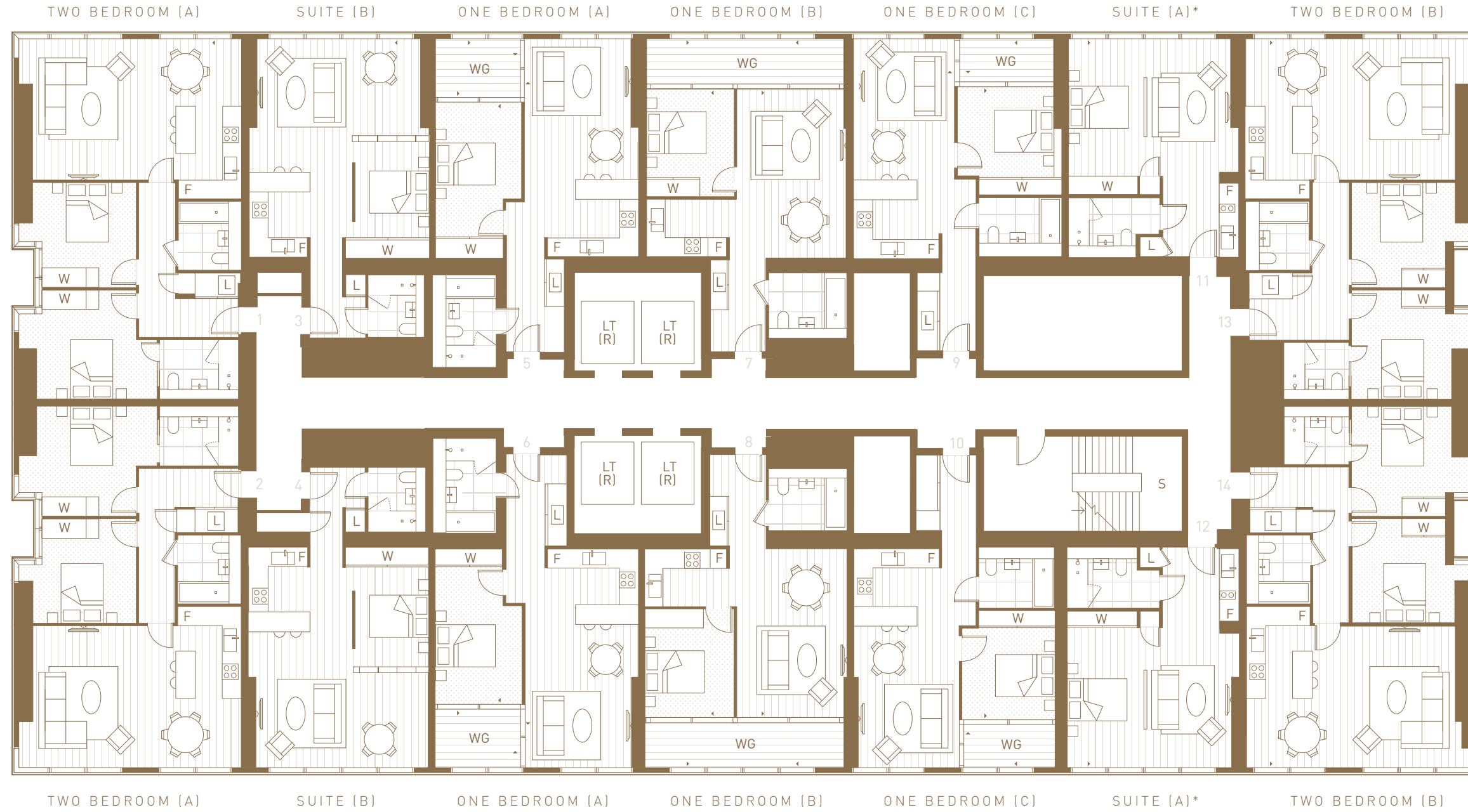
- F FRIDGE
- L LAUNDRY
- LT(PR) LIFT (PINNACLE RESIDENCES)
- S STAIRS
- W WARDROBE
- WG WINTER GARDEN

FLOOR DESIGNS AND LAYOUTS ARE INDICATIVE ONLY AND MAY CHANGE. TOTAL AREA SHOWS AVERAGE FOR THE TYPE. THE SPECIFICATION OF THE AREAS IS THE ANTICIPATED SPECIFICATION AS AT THE DATE THIS BROCHURE WAS PREPARED, BUT MAY BE SUBJECT TO CHANGE IN ACCORDANCE WITH PERMITTED VARIANCES UNDER THE APARTMENT SALES CONTRACTS. ALL SALES REMAIN SUBJECT TO CONTRACT. ALL INFORMATION REGARDING PROSPECTIVE AMENITY PROVISIONS REPRESENTS CURRENT INTENTION ONLY AND THE FINAL PROVISION OF AMENITY MAY CHANGE IN ACCORDANCE WITH PERMITTED VARIANCES UNDER THE APARTMENT SALES CONTRACTS. PLEASE CONSULT YOUR SALES CONTRACT FOR INFORMATION.



# RESIDENCES LEVELS 28-55

PANORAMA WEST: CITY OF LONDON / RIVER THAMES



PANORAMA EAST: CANARY WHARF / SOUTH DOCK

LANDMARK PINNACLE

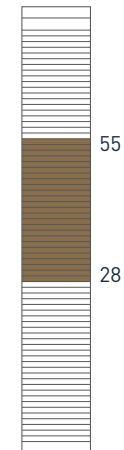
80 — 81

SUITE	
TYPE A	TYPE B
Living Area 5.8 x 7.4m	Living Area 6.1 x 7.4m
Total Area 40.7 sq m/438 sq ft	Total Area 51.5 sq m/555 sq ft

\*TYPE C  
Type C will replace certain Type A Suites on floors 28-49. Please check with your Sales Consultant.

ONE BEDROOM		
TYPE A	TYPE B	TYPE C
Living Area 3.9 x 7.4m	Living Area 3.7 x 5.7m	Living Area 4.1 x 7.4m
Bedroom 2.9 x 5.3m	Bedroom 3.0 x 3.7m	Bedroom 3.1 x 3.6m
Internal Area 55.7 sq m/600 sq ft	Internal Area 49.9 sq m/537 sq ft	Internal Area 50.2 sq m/540 sq ft
Winter Garden 5.0 sq m/54 sq ft	Winter Garden 10.0 sq m/108 sq ft	Winter Garden 5.0 sq m/54 sq ft
Total Area 60.7 sq m/654 sq ft	Total Area 59.9 sq m/645 sq ft	Total Area 55.2 sq m/594 sq ft

TWO BEDROOM	
TYPE A	TYPE B
Living Area 7.0 x 4.8m	Living Area 7.0 x 4.8m
Bedroom 1 4.0 x 3.7m	Bedroom 1 3.8 x 3.7m
Bedroom 2 3.8 x 3.5m	Bedroom 2 3.9 x 3.5m
Internal Area 84.1 sq m/905 sq ft	Internal Area 81.9 sq m/881 sq ft



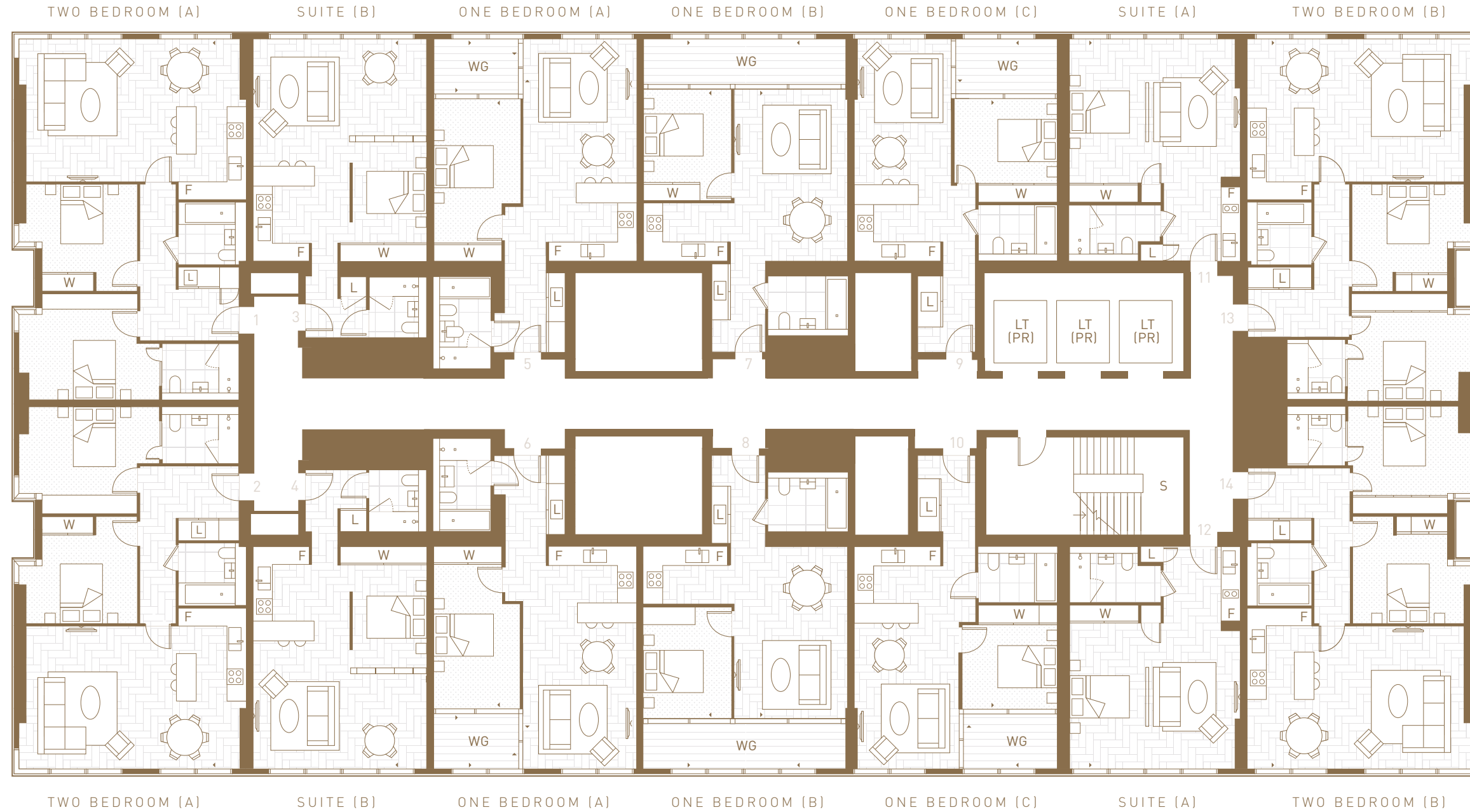
- F FRIDGE
- L LAUNDRY
- LT(PR) LIFT (PINNACLE RESIDENCES)
- S STAIRS
- W WARDROBE
- WG WINTER GARDEN

FLOOR DESIGNS AND LAYOUTS ARE INDICATIVE ONLY AND MAY CHANGE. TOTAL AREA SHOWS AVERAGE FOR THE TYPE. THE SPECIFICATION OF THE AREAS IS THE ANTICIPATED SPECIFICATION AS AT THE DATE THIS BROCHURE WAS PREPARED, BUT MAY BE SUBJECT TO CHANGE IN ACCORDANCE WITH PERMITTED VARIANCES UNDER THE APARTMENT SALES CONTRACTS. ALL SALES REMAIN SUBJECT TO CONTRACT. ALL INFORMATION REGARDING PROSPECTIVE AMENITY PROVISIONS REPRESENTS CURRENT INTENTION ONLY AND THE FINAL PROVISION OF AMENITY MAY CHANGE IN ACCORDANCE WITH PERMITTED VARIANCES UNDER THE APARTMENT SALES CONTRACTS. PLEASE CONSULT YOUR SALES CONTRACT FOR INFORMATION.



# PINNACLE RESIDENCES LEVELS 57-58

PANORAMA WEST: CITY OF LONDON / RIVER THAMES



PANORAMA EAST: CANARY WHARF / SOUTH DOCK

LANDMARK PINNACLE

82 — 83

## SUITE

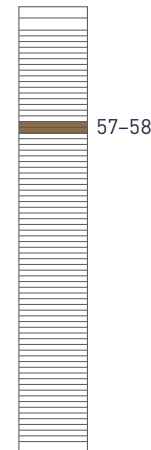
TYPE A	TYPE B
<b>Living Area</b> 5.8 x 7.6m	<b>Living Area</b> 5.8 x 7.6m
<b>Total Area</b> 41.6 sq m/448 sq ft	<b>Total Area</b> 51.0 sq m/549 sq ft

## ONE BEDROOM

TYPE A	TYPE B	TYPE C
<b>Living Area</b> 3.9 x 7.6m	<b>Living Area</b> 3.6 x 5.8m	<b>Living Area</b> 3.7 x 7.6m
<b>Bedroom</b> 2.9 x 5.5m	<b>Bedroom</b> 3.0 x 3.8m	<b>Bedroom</b> 3.2 x 3.6m
<b>Internal Area</b> 57.6 sq m/620 sq ft	<b>Internal Area</b> 50.6 sq m/545 sq ft	<b>Internal Area</b> 51.5 sq m/550 sq ft
<b>Winter Garden</b> 5.0 sq m/54 sq ft	<b>Winter Garden</b> 10.0 sq m/108 sq ft	<b>Winter Garden</b> 5.0 sq m/54 sq ft
<b>Total Area</b> 62.6 sq m/674 sq ft	<b>Total Area</b> 60.1 sq m/647 sq ft	<b>Total Area</b> 56.5 sq m/604 sq ft

## TWO BEDROOM

TYPE A	TYPE B
<b>Living Area</b> 7.3 x 4.8m	<b>Living Area</b> 7.0 x 4.8m
<b>Bedroom 1</b> 4.6 x 3.7m	<b>Bedroom 1</b> 3.9 x 3.7m
<b>Bedroom 2</b> 3.9 x 3.5m	<b>Bedroom 2</b> 3.9 x 3.5m
<b>Total Area</b> 86.3 sq m/930 sq ft	<b>Total Area</b> 82.7 sq m/890 sq ft



57-58

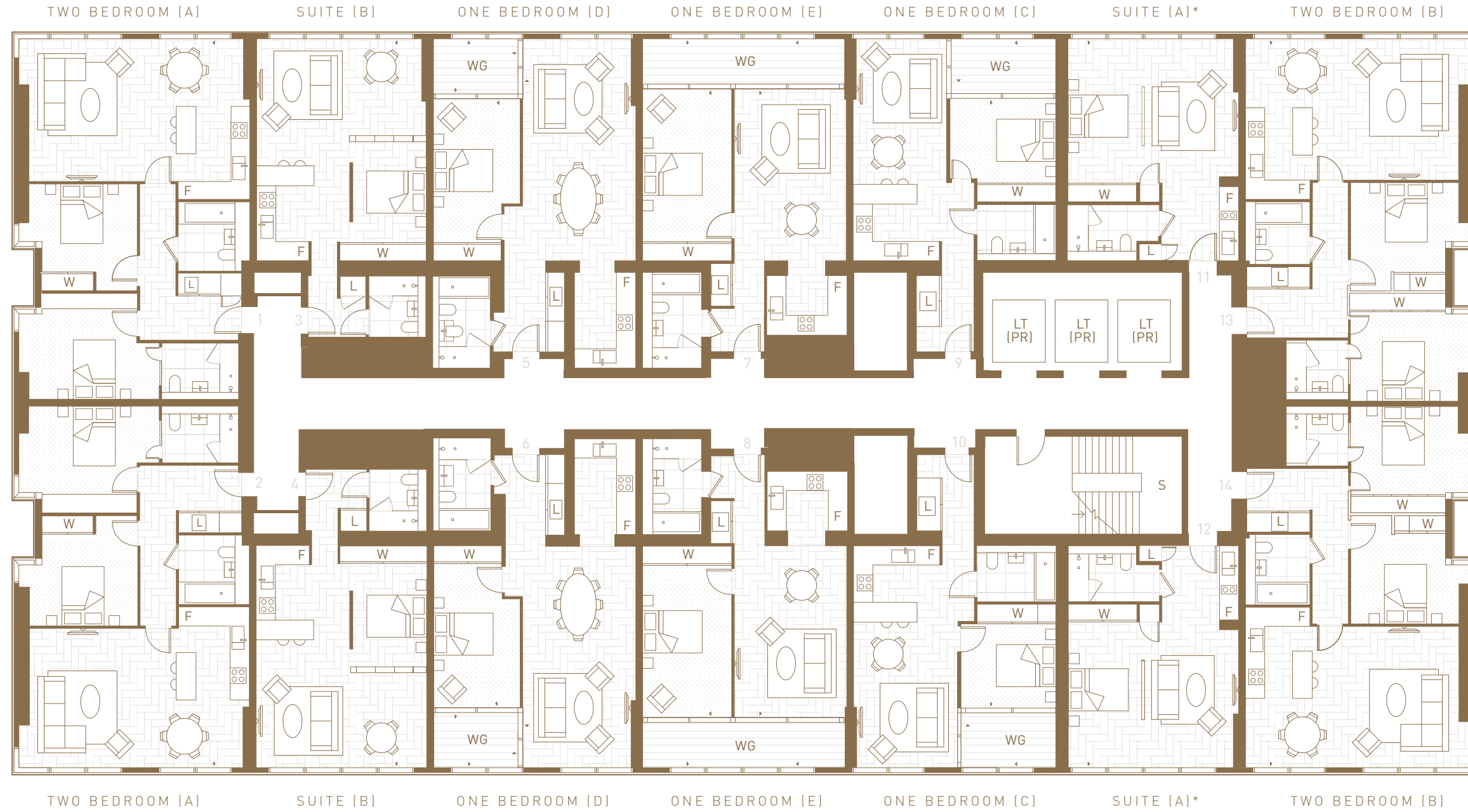
- F FRIDGE
- L LAUNDRY
- LT(PR) LIFT (PINNACLE RESIDENCES)
- S STAIRS
- W WARDROBE
- WG WINTER GARDEN

FLOOR DESIGNS AND LAYOUTS ARE INDICATIVE ONLY AND MAY CHANGE. TOTAL AREA SHOWS AVERAGE FOR THE TYPE. THE SPECIFICATION OF THE AREAS IS THE ANTICIPATED SPECIFICATION AS AT THE DATE THIS BROCHURE WAS PREPARED, BUT MAY BE SUBJECT TO CHANGE IN ACCORDANCE WITH PERMITTED VARIANCES UNDER THE APARTMENT SALES CONTRACTS. ALL SALES REMAIN SUBJECT TO CONTRACT. ALL INFORMATION REGARDING PROSPECTIVE AMENITY PROVISIONS REPRESENTS CURRENT INTENTION ONLY AND THE FINAL PROVISION OF AMENITY MAY CHANGE IN ACCORDANCE WITH PERMITTED VARIANCES UNDER THE APARTMENT SALES CONTRACTS. PLEASE CONSULT YOUR SALES CONTRACT FOR INFORMATION.



# PINNACLE RESIDENCES LEVELS 59-64

PANORAMA WEST: CITY OF LONDON / RIVER THAMES



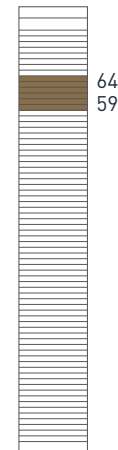
PANORAMA EAST: CANARY WHARF / SOUTH DOCK

LANDMARK PINNACLE

84 — 85

SUITE		ONE BEDROOM			TWO BEDROOM	
TYPE A	TYPE B	TYPE C	TYPE D	TYPE E	TYPE A	TYPE B
<b>Living Area</b> 5.8 x 7.6m	<b>Living Area</b> 5.8 x 7.6m	<b>Living Area</b> 3.7 x 7.6m	<b>Living Area</b> 3.9 x 7.6m	<b>Living Area</b> 3.8 x 5.8m	<b>Living Area</b> 7.3 x 4.8m	<b>Living Area</b> 7.0 x 4.8m
<b>Total Area</b> 41.6 sq m/448 sq ft	<b>Total Area</b> 51.0 sq m/549 sq ft	<b>Bedroom</b> 3.2 x 3.6m	<b>Bedroom</b> 2.9 x 5.5m	<b>Bedroom</b> 2.9 x 5.8m	<b>Bedroom 1</b> 4.6 x 3.7m	<b>Bedroom 1</b> 3.9 x 3.7m
		<b>Internal Area</b> 52.0 sq m/560 sq ft	<b>Internal Area</b> 63.6 sq m/685 sq ft	<b>Internal Area</b> 57.0 sq m/614 sq ft	<b>Bedroom 2</b> 3.9 x 3.5m	<b>Bedroom 2</b> 3.9 x 3.5m
		<b>Winter Garden</b> 5.0 sq m/54 sq ft	<b>Winter Garden</b> 5.1 sq m/55 sq ft	<b>Winter Garden</b> 11.0 sq m/118 sq ft	<b>Total Area</b> 86.4 sq m/930 sq ft	<b>Total Area</b> 82.7 sq m/890 sq ft
		<b>Total Area</b> 57.0 sq m/614 sq ft	<b>Total Area</b> 68.7 sq m/740 sq ft	<b>Total Area</b> 68.0 sq m/732 sq ft		

\*TYPE C  
Type C will replace certain  
Type A Suites on floors  
61-64. Please check with  
your Sales Consultant.



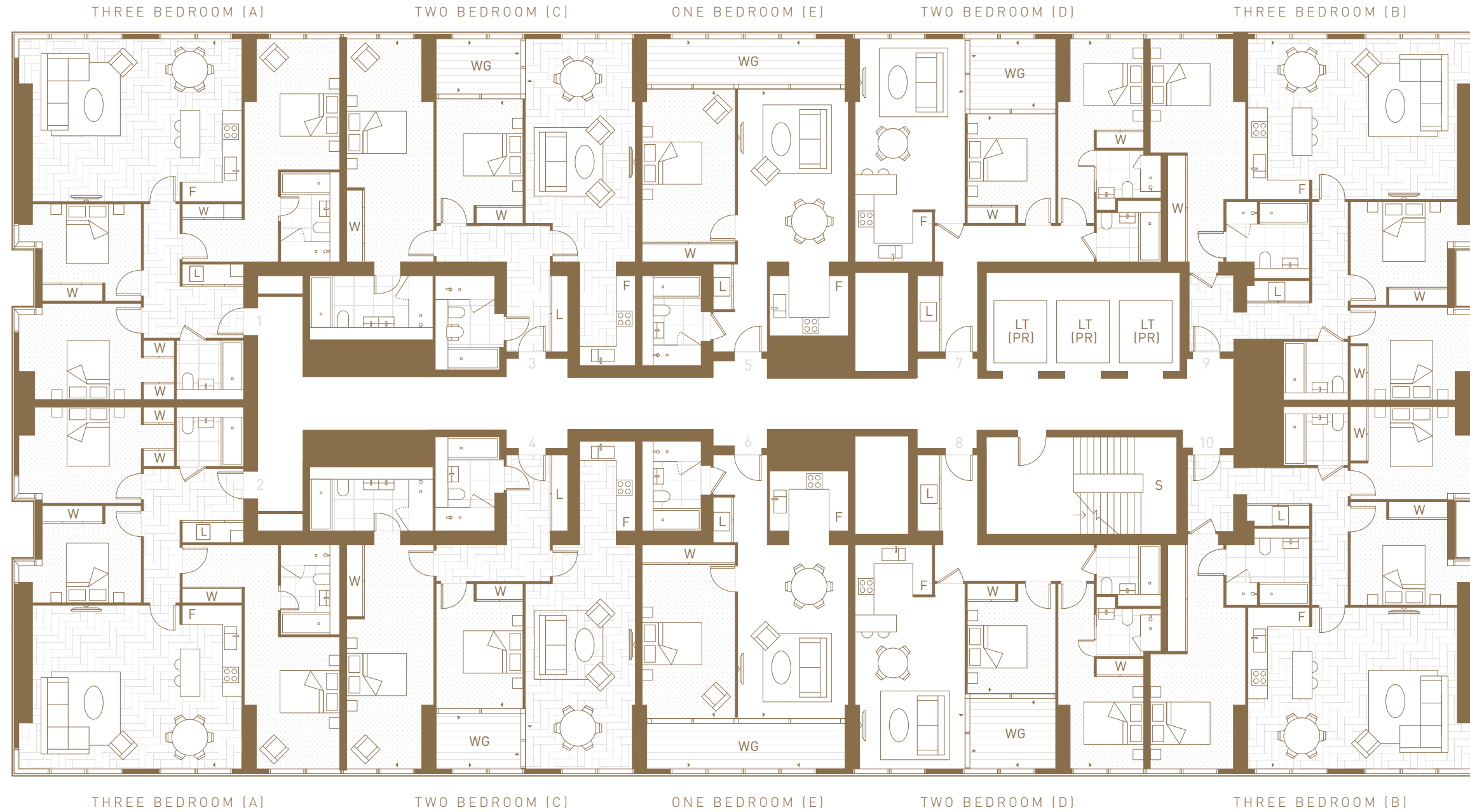
- F FRIDGE
- L LAUNDRY
- LT(PR) LIFT (PINNACLE RESIDENCES)
- S STAIRS
- W WARDROBE
- WG WINTER GARDEN

FLOOR DESIGNS AND LAYOUTS ARE INDICATIVE ONLY AND MAY CHANGE. TOTAL AREA SHOWS AVERAGE FOR THE TYPE. THE SPECIFICATION OF THE AREAS IS THE ANTICIPATED SPECIFICATION AS AT THE DATE THIS BROCHURE WAS PREPARED, BUT MAY BE SUBJECT TO CHANGE IN ACCORDANCE WITH PERMITTED VARIANCES UNDER THE APARTMENT SALES CONTRACTS. ALL SALES REMAIN SUBJECT TO CONTRACT. ALL INFORMATION REGARDING PROSPECTIVE AMENITY PROVISIONS REPRESENTS CURRENT INTENTION ONLY AND THE FINAL PROVISION OF AMENITY MAY CHANGE IN ACCORDANCE WITH PERMITTED VARIANCES UNDER THE APARTMENT SALES CONTRACTS. PLEASE CONSULT YOUR SALES CONTRACT FOR INFORMATION.



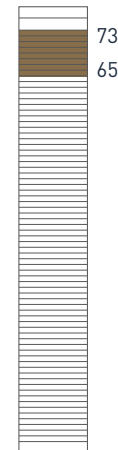
# PINNACLE RESIDENCES LEVELS 65-73

PANORAMA WEST: CITY OF LONDON / RIVER THAMES



PANORAMA EAST: CANARY WHARF / SOUTH DOCK

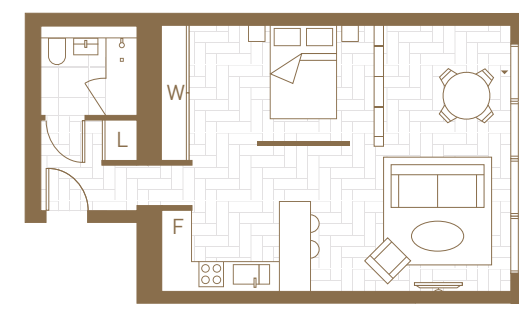
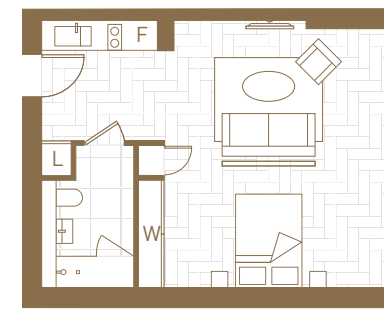
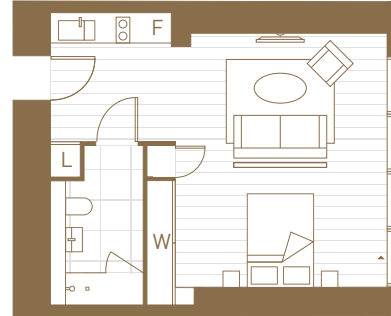
ONE BEDROOM	TWO BEDROOM		THREE BEDROOM	
TYPE E	TYPE C	TYPE D	TYPE A	TYPE B
<b>Living Area</b> 7.3 x 5.8m	<b>Living Area</b> 3.7 x 7.6m	<b>Living Area</b> 3.7 x 7.6m	<b>Living Area</b> 7.0 x 5.5m	<b>Living Area</b> 7.0 x 5.5m
<b>Bedroom</b> 3.1 x 5.8m	<b>Bedroom 1</b> 2.9 x 7.6m	<b>Bedroom 1</b> 2.9 x 6.3m	<b>Bedroom 1</b> 3.2 x 4.5m	<b>Bedroom 1</b> 3.2 x 7.9m
<b>Internal Area</b> 57.0 sq m/614 sq ft	<b>Bedroom 2</b> 2.9 x 3.7m	<b>Bedroom 2</b> 3.0 x 3.7m	<b>Bedroom 2</b> 4.0 x 3.2m	<b>Bedroom 2</b> 4.0 x 3.1m
<b>Winter Garden</b> 9.7 sq m/105 sq ft	<b>Internal Area</b> 92.9 sq m/1000 sq ft	<b>Total Area</b> 79.0 sq m/850 sq ft	<b>Bedroom 3</b> 4.0 x 3.2m	<b>Bedroom 3</b> 4.0 x 3.5 m
<b>Total Area</b> 66.7 sq m/719 sq ft	<b>Winter Garden</b> 7.0 sq m/75 sq ft		<b>Total Area</b> 108.8 sq m/1171 sq ft	<b>Total Area</b> 108.8 sq m/1171 sq ft
	<b>Total Area</b> 99.9 sq m/1075 sq ft			



- F FRIDGE
- L LAUNDRY
- LT (PR) LIFT (PINNACLE RESIDENCES)
- S STAIRS
- W WARDROBE
- WG WINTER GARDEN

FLOOR DESIGNS AND LAYOUTS ARE INDICATIVE ONLY AND MAY CHANGE. TOTAL AREA SHOWS AVERAGE FOR THE TYPE. THE SPECIFICATION OF THE AREAS IS THE ANTICIPATED SPECIFICATION AS AT THE DATE THIS BROCHURE WAS PREPARED, BUT MAY BE SUBJECT TO CHANGE IN ACCORDANCE WITH PERMITTED VARIANCES UNDER THE APARTMENT SALES CONTRACTS. ALL SALES REMAIN SUBJECT TO CONTRACT. ALL INFORMATION REGARDING PROSPECTIVE AMENITY PROVISIONS REPRESENTS CURRENT INTENTION ONLY AND THE FINAL PROVISION OF AMENITY MAY CHANGE IN ACCORDANCE WITH PERMITTED VARIANCES UNDER THE APARTMENT SALES CONTRACTS. PLEASE CONSULT YOUR SALES CONTRACT FOR INFORMATION.





## RESIDENCES, TYPE A

LEVELS 11-55

Units: 65

West: 33

East: 32

Total Area: 39.8 - 41.3 sq m / 429 - 445 sq ft



## RESIDENCES, TYPE B

LEVELS 28-55

Units: 56

West: 28

East: 28

Total Area: 50.1 - 53.5 sq m / 549 - 576 sq-ft



## PINNACLE RESIDENCES, TYPE A

LEVELS 57-64

Units: 12

West: 6

East: 6

Total Area: 41.8 - 42.4 sq m / 451 - 456 sq ft



## PINNACLE RESIDENCES, TYPE B

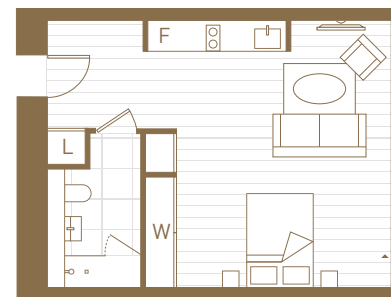
LEVELS 57-64

Units: 16

West: 8

East: 8

Total Area: 50.9 - 51.9 sq m / 548 - 559 sq ft



## RESIDENCES, TYPE C\*

LEVELS 18-49

Units: 23

West: 11

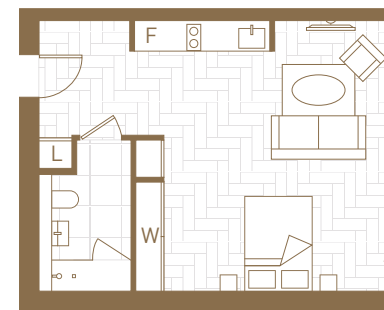
East: 12

Total Area: 39.0 - 41.1 sq m / 420 - 443 sq ft



### \*TYPE C

Type C will replace certain Type A Suites on floors. Please check with the Sales Consultant.



## PINNACLE RESIDENCES, TYPE C\*

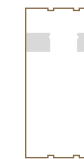
LEVELS 61-64

Units: 4

West: 2

East: 2

Total Area: 41.0 - 41.4 sq m / 442 - 446 sq ft



### \*TYPE C

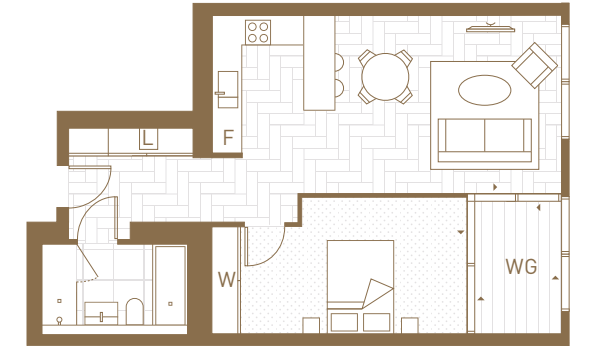
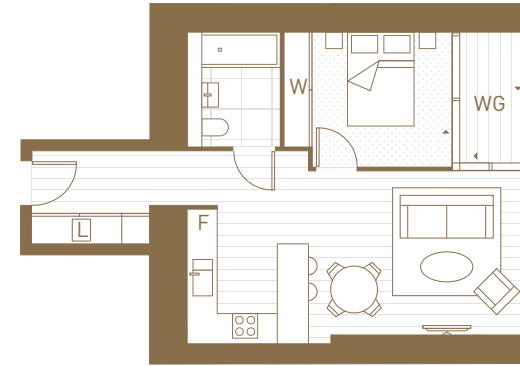
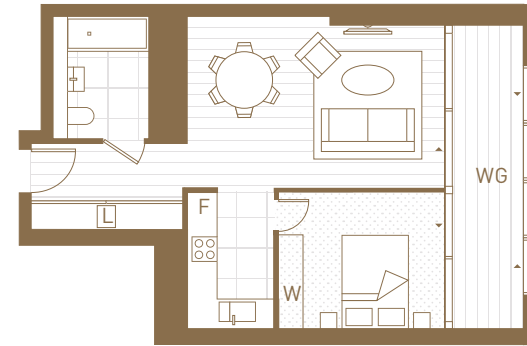
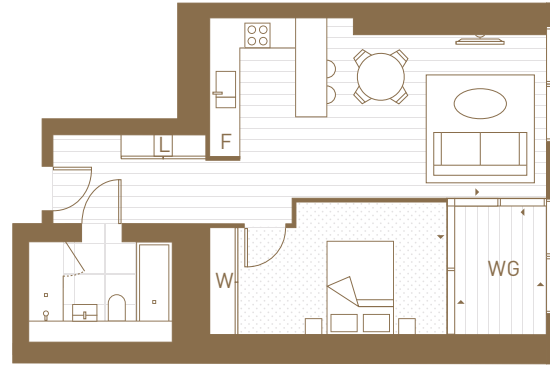
Type C will replace certain Type A Suites on floors. Please check with the Sales Consultant.

F FRIDGE      W WARDROBE  
L LAUNDRY      WG WINTER GARDEN

FLOOR DESIGNS AND LAYOUTS ARE INDICATIVE ONLY AND MAY CHANGE. THE SPECIFICATION OF THE AREAS IS THE ANTICIPATED SPECIFICATION AS AT THE DATE THIS BROCHURE WAS PREPARED, BUT MAY BE SUBJECT TO CHANGE IN ACCORDANCE WITH PERMITTED VARIANCES UNDER THE APARTMENT SALES CONTRACTS. ALL SALES REMAIN SUBJECT TO CONTRACT. ALL INFORMATION REGARDING PROSPECTIVE AMENITY PROVISIONS REPRESENTS CURRENT INTENTION ONLY AND THE FINAL PROVISION OF AMENITY MAY CHANGE IN ACCORDANCE WITH PERMITTED VARIANCES UNDER THE APARTMENT SALES CONTRACTS. PLEASE CONSULT YOUR SALES CONTRACT FOR INFORMATION.



# ONE BEDROOMS



## RESIDENCES, TYPE A

LEVELS 14-55

Units: 82

West: 41

East: 41

Total Area: 59.2 - 61.9 sq m / 638 - 667 sq ft



## RESIDENCES, TYPE B

LEVELS 11-55

Units: 88

West: 44

East: 44

Total Area: 57.5 - 59.4 sq m / 619 - 640 sq ft



## RESIDENCES, TYPE C

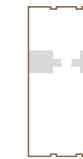
LEVELS 11-55

Units: 88

West: 44

East: 44

Total Area: 52.8 - 55.5 sq m / 569 - 598 sq ft



## PINNACLE RESIDENCES, TYPE A

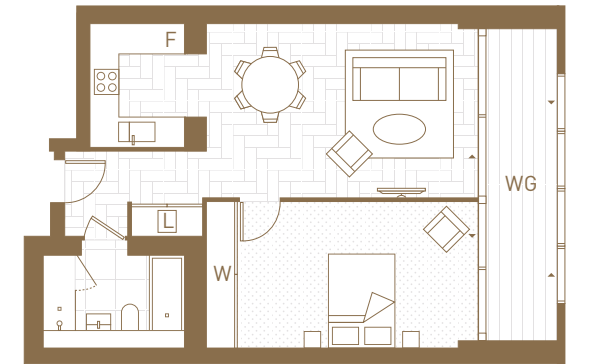
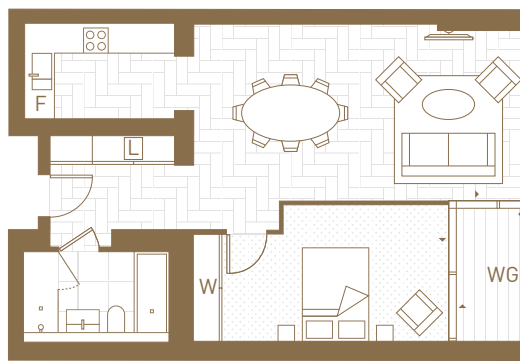
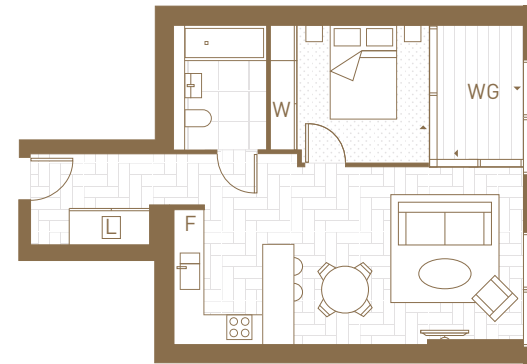
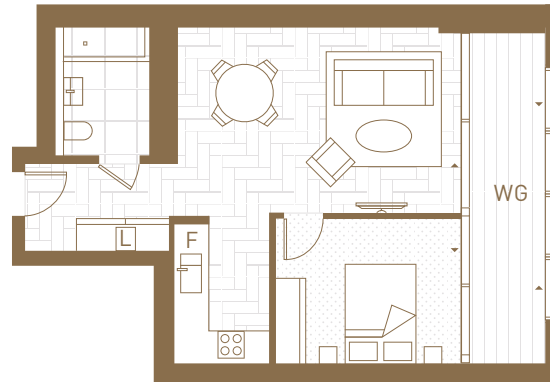
LEVELS 57-58

Units: 4

West: 2

East: 2

Total Area: 62.4 - 62.9 sq m / 672 - 678 sq ft



## PINNACLE RESIDENCES, TYPE B

LEVELS 57-58

Units: 4

West: 2

East: 2

Total Area: 60.1 sq m / 647 sq ft



## PINNACLE RESIDENCES, TYPE C

LEVELS 57-58

Units: 16

West: 8

East: 8

Total Area: 55.5 - 56.8 sq m / 598 - 612 sq ft



## PINNACLE RESIDENCES, TYPE D

LEVELS 59-64

Units: 12

West: 6

East: 6

Total Area: 68.4 - 69.3 sq m / 737 - 746 sq ft



## PINNACLE RESIDENCES, TYPE E

LEVELS 59-73

Units: 30

West: 15

East: 15

Total Area: 64.0 - 66.7 sq m / 689 - 718 sq ft

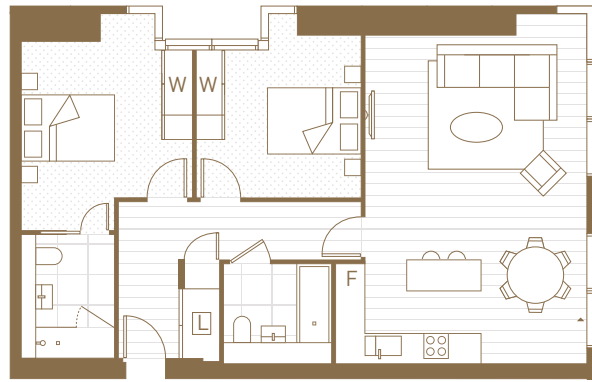


F FRIDGE      W WARDROBE  
L LAUNDRY    WG WINTER GARDEN

FLOOR DESIGNS AND LAYOUTS ARE INDICATIVE ONLY AND MAY CHANGE. THE SPECIFICATION OF THE AREAS IS THE ANTICIPATED SPECIFICATION AS AT THE DATE THIS BROCHURE WAS PREPARED, BUT MAY BE SUBJECT TO CHANGE IN ACCORDANCE WITH PERMITTED VARIANCES UNDER THE APARTMENT SALES CONTRACTS. ALL SALES REMAIN SUBJECT TO CONTRACT. ALL INFORMATION REGARDING PROSPECTIVE AMENITY PROVISIONS REPRESENTS CURRENT INTENTION ONLY AND THE FINAL PROVISION OF AMENITY MAY CHANGE IN ACCORDANCE WITH PERMITTED VARIANCES UNDER THE APARTMENT SALES CONTRACTS. PLEASE CONSULT YOUR SALES CONTRACT FOR INFORMATION.



# TWO BEDROOMS



## RESIDENCES, TYPE A

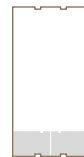
LEVELS 28-55

Units: 56

West: 28

East: 28

Total Area: 83.4 - 84.6 sq m / 898 - 911 sq ft



## RESIDENCES, TYPE B

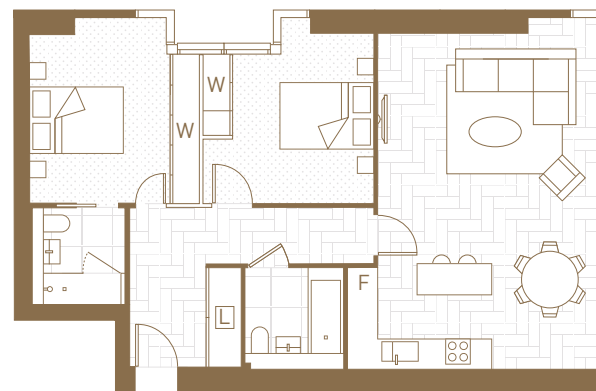
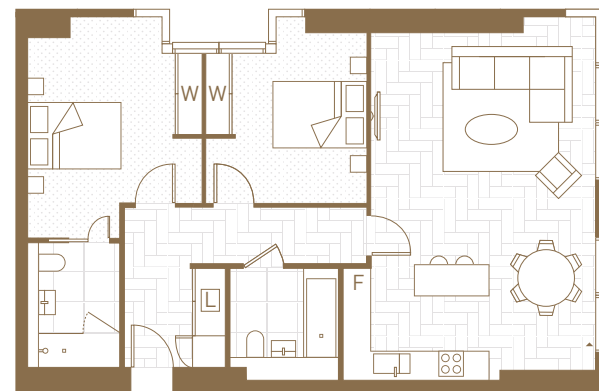
LEVELS 11-55

Units: 88

West: 44

East: 44

Total Area: 79.3 - 82.3 sq m / 854 - 886 sq ft



## PINNACLE RESIDENCES, TYPE A

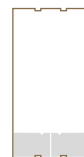
LEVELS 57-64

Units: 16

West: 8

East: 8

Total Area: 86.1 - 86.6 sq m / 927 - 933 sq ft



## PINNACLE RESIDENCES, TYPE B

LEVELS 57-64

Units: 16

West: 8

East: 8

Total Area: 82.6 - 82.9 sq m / 890 - 893 sq ft



## PINNACLE RESIDENCES, TYPE C

LEVELS 65-73

Units: 18

West: 9

East: 9

Total Area: 99.2 - 101.8 sq m / 1068 - 1096 sq ft



## PINNACLE RESIDENCES, TYPE D

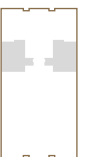
LEVELS 65-73

Units: 18

West: 9

East: 9

Total Area: 78.8 - 79.5 sq m / 849 - 856 sq ft

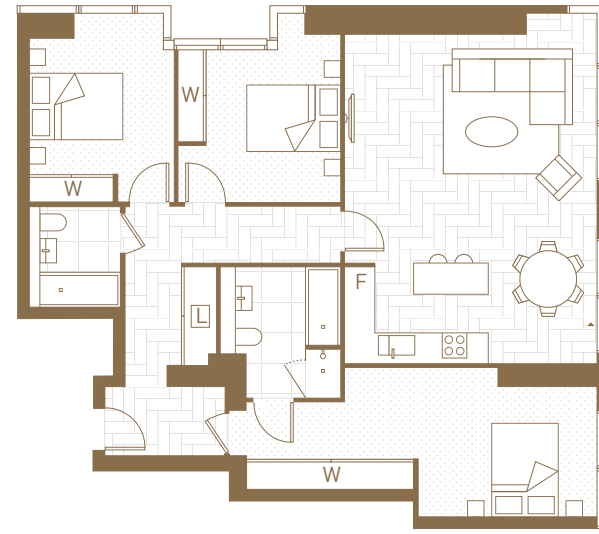
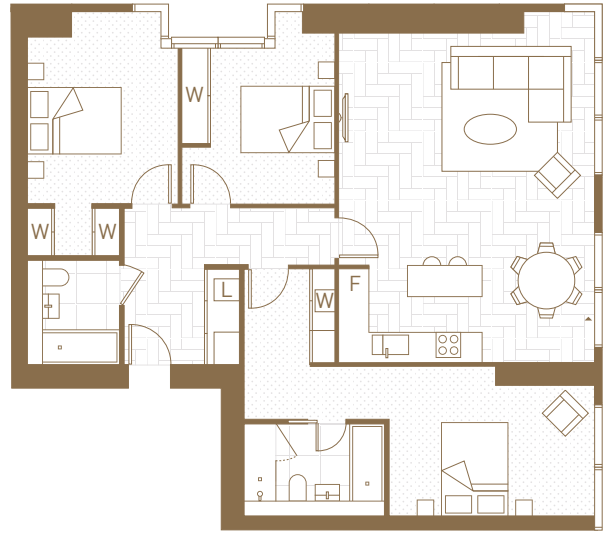


F FRIDGE      W WARDROBE  
L LAUNDRY      WG WINTER GARDEN

FLOOR DESIGNS AND LAYOUTS ARE INDICATIVE ONLY AND MAY CHANGE. THE SPECIFICATION OF THE AREAS IS THE ANTICIPATED SPECIFICATION AS AT THE DATE THIS BROCHURE WAS PREPARED, BUT MAY BE SUBJECT TO CHANGE IN ACCORDANCE WITH PERMITTED VARIANCES UNDER THE APARTMENT SALES CONTRACTS. ALL SALES REMAIN SUBJECT TO CONTRACT. ALL INFORMATION REGARDING PROSPECTIVE AMENITY PROVISIONS REPRESENTS CURRENT INTENTION ONLY AND THE FINAL PROVISION OF AMENITY MAY CHANGE IN ACCORDANCE WITH PERMITTED VARIANCES UNDER THE APARTMENT SALES CONTRACTS. PLEASE CONSULT YOUR SALES CONTRACT FOR INFORMATION.



# THREE BEDROOMS



## PINNACLE RESIDENCES, TYPE A

LEVELS 65-73

Units: 18

West: 9

East: 9

Total Area: 108.0 - 108.2 sq m / 1163 - 1165 sq ft



## PINNACLE RESIDENCES, TYPE B

LEVELS 65-73

Units: 18

West: 9

East: 9

Total Area: 108.6 - 108.9 sq m / 1169 - 1173 sq ft



F FRIDGE      W WARDROBE  
L LAUNDRY      WG WINTER GARDEN

FLOOR DESIGNS AND LAYOUTS ARE INDICATIVE ONLY AND MAY CHANGE. THE SPECIFICATION OF THE AREAS IS THE ANTICIPATED SPECIFICATION AS AT THE DATE THIS BROCHURE WAS PREPARED, BUT MAY BE SUBJECT TO CHANGE IN ACCORDANCE WITH PERMITTED VARIANCES UNDER THE APARTMENT SALES CONTRACTS. ALL SALES REMAIN SUBJECT TO CONTRACT. ALL INFORMATION REGARDING PROSPECTIVE AMENITY PROVISIONS REPRESENTS CURRENT INTENTION ONLY AND THE FINAL PROVISION OF AMENITY MAY CHANGE IN ACCORDANCE WITH PERMITTED VARIANCES UNDER THE APARTMENT SALES CONTRACTS. PLEASE CONSULT YOUR SALES CONTRACT FOR INFORMATION.



COMPUTER GENERATED IMAGE IS INDICATIVE ONLY.



# SPECIFICATION

## INTERIOR FINISHES

- Engineered timber floor finish to living, dining, kitchen, hallways and reception rooms
- Front entrance doors with veneered finish and matching hardwood frame
- White satin finish internal doors
- Skirting and architraves in white satin finish
- Smooth-painted ceilings
- Winter garden with full-height glazed door (where winter garden applicable)
- Brushed-chrome ironmongery  
Antique Brass Ironmongery - Prestige
- Carpets to bedrooms
- Wardrobes to master and bedroom 2 with timber veneer doors and frames. Wardrobe lengths range between 1.2 to 1.8 linear metres
- Engineered-timber herringbone flooring to living, dining, kitchen, hallways and reception rooms\*

## KITCHEN

- Custom-designed fully integrated open-plan kitchen in white matt lacquered finish
- Reconstituted stone worktops and splashbacks
- Single bowl under-mounted stainless steel sink and single-lever mixer tap
- Siemens multi-function combination oven and microwave
- Siemens induction hob with extractor fan above hob
- Siemens integrated fridge freezer to studios, 1-, 2- and 3-bed apartments
- Siemens integrated dishwasher
- Brass tapware to kitchens\*
- Custom-designed fully integrated kitchen in veneered finish\*

## UTILITY CUPBOARD

- Cooling and heating interface units
- Mechanical ventilation heat recovery (MVHR) unit
- Siemens washing machine/dryer
- Consumer unit storage

## BATHROOMS/SHOWER ROOMS

- Wall-mounted shower with additional wall-mounted hand-held shower in all showers and baths
- Glass shower enclosure/screen
- Bespoke vanity unit with reconstituted stone countertop
- Mirrored toiletries cabinet with integral lighting
- Wall-mounted WC with concealed cistern, soft-close seat and dual push-button flush
- White steel-enamel bath
- Featured heated chrome towel bars/rail  
Brushed Cool Sunrise - Prestige
- Porcelain tiled floors and walls
- Veneer bath panel to baths
- Feature stone wall to bath/shower rooms\*
- Brass style tapware to bathrooms\*

## HEATING AND COOLING

- The building is served by the wider development's district heating and chilled water network, providing metered supplies for heating, hot water and cooling to all apartments
- Comfort cooling provided by fancoil units to all reception rooms and bedrooms
- Under-floor heating in bathrooms/shower rooms

## LIGHTING AND ELECTRICAL FITTINGS

- Low-voltage LED luminaires throughout
- Electronic dimmer control to living room and master bedroom
- Integrated under-unit lighting to underside of high level kitchen units
- Brushed stainless steel light switches or similar throughout  
Antique Brass light switches/sockets - Prestige
- Brushed stainless steel sockets at worktop height in the kitchen  
Antique Brass light switches/sockets - Prestige
- White plastic socket outlets to all other locations
- Shaver socket to bathrooms/shower rooms

## TELECOMMUNICATIONS

- Pre-wired for internet, telephone and multi-media distribution
- Satellite, terrestrial TV

## SECURITY AND PEACE OF MIND

- 24-hour on-site security team
- Site-wide CCTV surveillance to public areas and building entrances
- Video-entry phone system to all apartments
- Mains powered and smoke heat detectors and sprinkler fire protection system
- Premier Guarantee 10-year warranty from date of legal completion

## COMMUNAL AREAS

- Interior-designed entrance lobbies and corridors
- Noble Beige flooring to main reception area
- Carpeting to all corridors
- Landscaped external areas

## PARKING

- Electronic entry system to underground car park
- Car-parking spaces (subject to availability)
- Electric-car charging points
- Secure bicycle storage

## AMENITIES

- Children's Play Garden
- London Square Garden
- Private Dining and Meeting Rooms
- Residents' Lounge and Library
- Residents' Gym and Studio
- Private Cinema
- Media Room
- Games Room
- Roof Terraces
- Golf Simulator
- Secure Underground Parking
- 24-hour Concierge
- Pinnacle Park
- Pinnacle Pavilion (Retail)

\*Pinnacle Residences only



## KITCHEN

COMPUTER GENERATED IMAGE IS INDICATIVE ONLY. YOUR ATTENTION IS DRAWN TO THE FACT THAT IT MAY NOT BE POSSIBLE TO PROVIDE THE BRANDED PRODUCTS AS REFERRED TO IN THE SPECIFICATION. IN SUCH CASES, A SIMILAR ALTERNATIVE WILL BE PROVIDED. CHALEGROVE RESERVES THE RIGHT TO MAKE THESE CHANGES AS REQUIRED.



## CHALEGROVE PROPERTIES

For over 30 years, Chalegrove Properties Limited (CPL) have delivered some of the UK's most admired and commercially successful, high-end residential projects.

Their position as one of London's leading developers is a result of the strategic, long-term approach they have adopted since their incorporation in 1989. To date, CPL have successfully delivered 1,348 homes around the Canary Wharf area through schemes such as Canary Central, Landmark East and Landmark West. Currently under development are a further 1,157 homes. On completion of Landmark Pinnacle and Island Point, CPL will have delivered an impressive 2,500 homes in the Canary Wharf area alone. CPL have also delivered many luxury residential developments throughout London – including neighbourhoods such as St. John's Wood, Victoria, West Hampstead and Vauxhall – as well as other notable schemes in the UK, such as Oxford University's award-winning Said Business School. This proven track-record has given them a deep and wide-ranging knowledge of the market, encompassing land

acquisition, planning, design and construction, sales and marketing, to final completion. Nowhere is this more apparent than in the award-winning Landmark family of buildings, to which Landmark Pinnacle will be the last and most celebrated addition. To realise this vision of a new, completely integrated, fully serviced, high-quality residential neighbourhood, CPL have sought out and established long-standing relationships with world-leading architects, designers, constructors, sales agents and marketing agencies. This dedicated, hand-picked team – which includes the world renowned architects, Squire and Partners, as well as internationally recognised design practices WSP and Hoare Lea – has been able to ensure that every aspect of the project delivers on this initial vision. The result is a home that will set a new standard for urban living in the city and, in addition, will stand as a London landmark far into the future.





VIEW LOOKING EAST FROM THE 75TH FLOOR



LANDMARK PINNACLE

100 — 101



VIEW LOOKING WEST FROM THE 75TH FLOOR



LANDMARK PINNACLE





## CONTACT

**Marketing Suite** +44 (0)20 3905 6826  
 40 Landmark Square sales@landmarkpinnacle.com  
 London E14 9AB landmarkpinnacle.com



This brochure and the information contained in it does not form part of any contract, and while reasonable effort has been made to ensure accuracy, this cannot be guaranteed and no representation or warranty is made in that regard. Please note that these details are intended to give general indication and should be used as a guide only. Computer Generated Images and photographs, including photographs of views, are for indicative purposes only. Fixtures and furnishings, including furniture, wall panelling and wall dressings, shown in Computer Generated Images and photographs are not standard nor included in sales. Apartment designs and layouts are indicative only and may change. Areas defined as Amenity Areas (AA) are subject to planning otherwise they will revert to Winter Gardens (WG). The specification of the apartments is the anticipated specification as at the date this brochure was prepared, but may be subject to change in accordance with permitted variances under the apartment sale contracts. Computer Generated Images and photos are indicative only. All sales remain subject to contract. Please consult your sales contract for information. The property areas are calculated and presented in accordance with the RICS Code of Measuring Practice, 6th edition recommendation. These areas are indicative only of typical floor plans. Property areas of individual apartments/floors may change subject to structural column locations. Maps for illustration purposes only, not to scale. Disclaimer: Please be aware that these details are intended to give a general indication of properties available and should be used as a guide only. The company reserves the right to alter these details at any time. The contents herein shall not form any part of any contract or be a representation including such contract. These properties are offered subject to availability. Applicants are advised to contact the sales office or the appointed agents to ascertain the availability of any particular type of property so as to avoid a fruitless journey. The property areas are provided as gross internal areas under the RICS measuring practice 4th edition recommendation. Computer generated images are indicative only. Maps are for illustration purposes only and not to scale. Travel times taken from Google.co.uk/maps, tfl.gov.uk and nationalrail.co.uk. Prices and details correct at time of going to press. Planning application number is PA/12/03248 consented on the 10.10.2013 by Tower Hamlets Council. Through the purchase of a property at Landmark Pinnacle, the buyer is acquiring an apartment with a 999 year leasehold. Like any investment, purchasing uncompleted properties situated outside Hong Kong is complicated and contains risk. You should review all relevant information and documents carefully before making a purchase decision. If in doubt, please seek independent professional advice before making a purchase decision. The non-licensed agents engage in estate agency work exclusively in relation to properties outside Hong Kong and are not licensed to deal with any property situated in Hong Kong.





CHALEGROVE PROPERTIES LIMITED