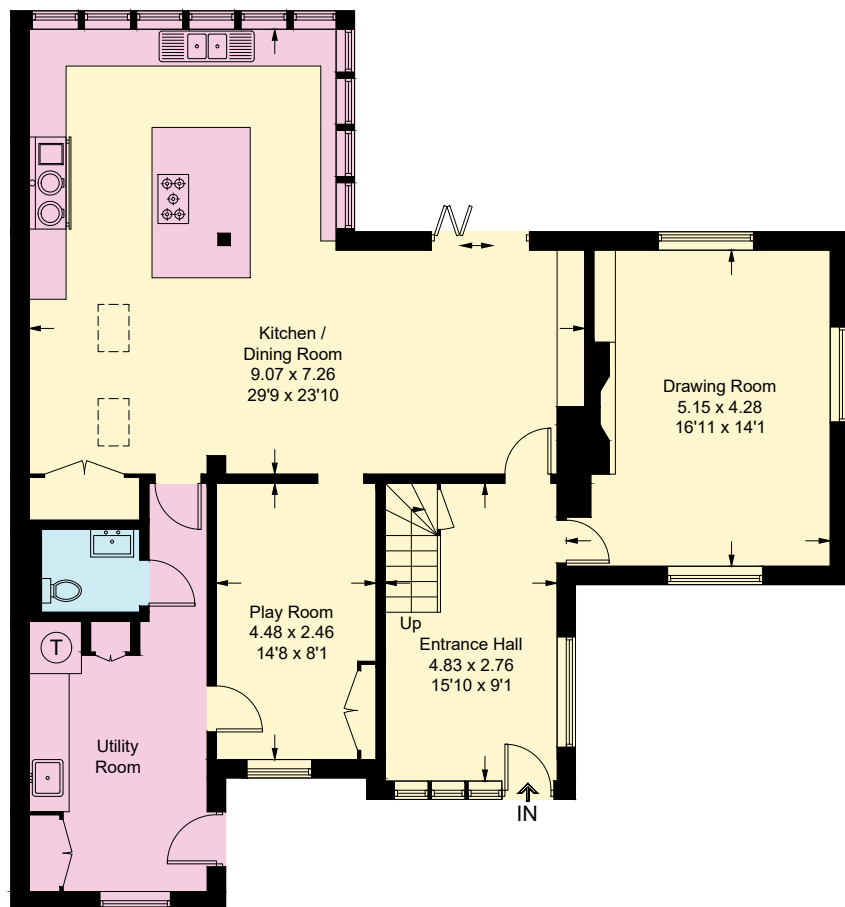


Driftwood, Rye Road, Sandhurst, Cranbrook, Kent, TN18 5JL

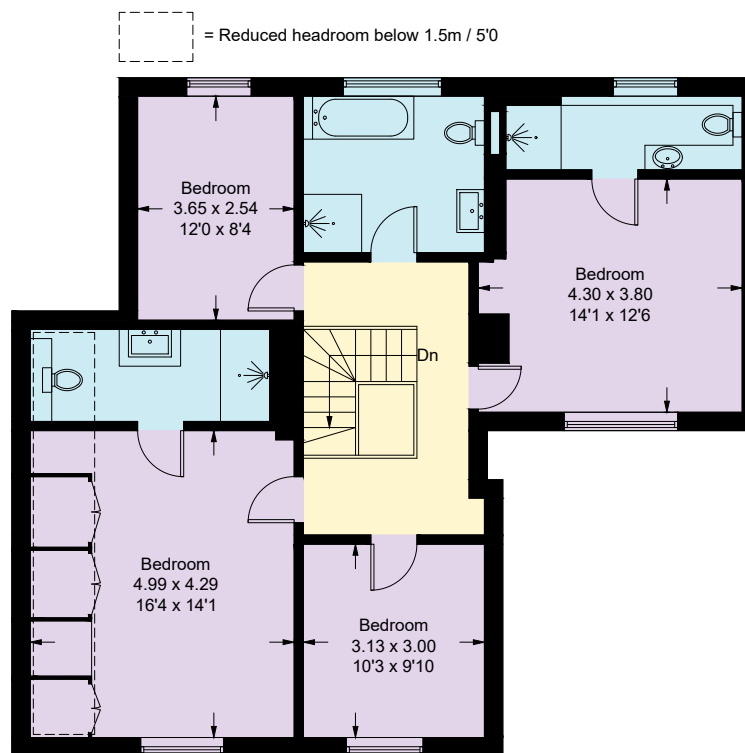
Approximate Gross Internal Area = 191.4 sq m / 2060.2 sq ft

Outbuilding = 28.8 sq m / 310 sq ft

Total = 220.2 sq m / 2370.2 sq ft



Ground Floor



First Floor

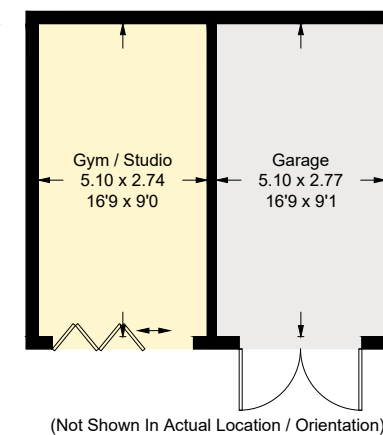


Illustration for identification purposes only, measurements are approximate,
not to scale. Fourlabs.co © (ID1195960)