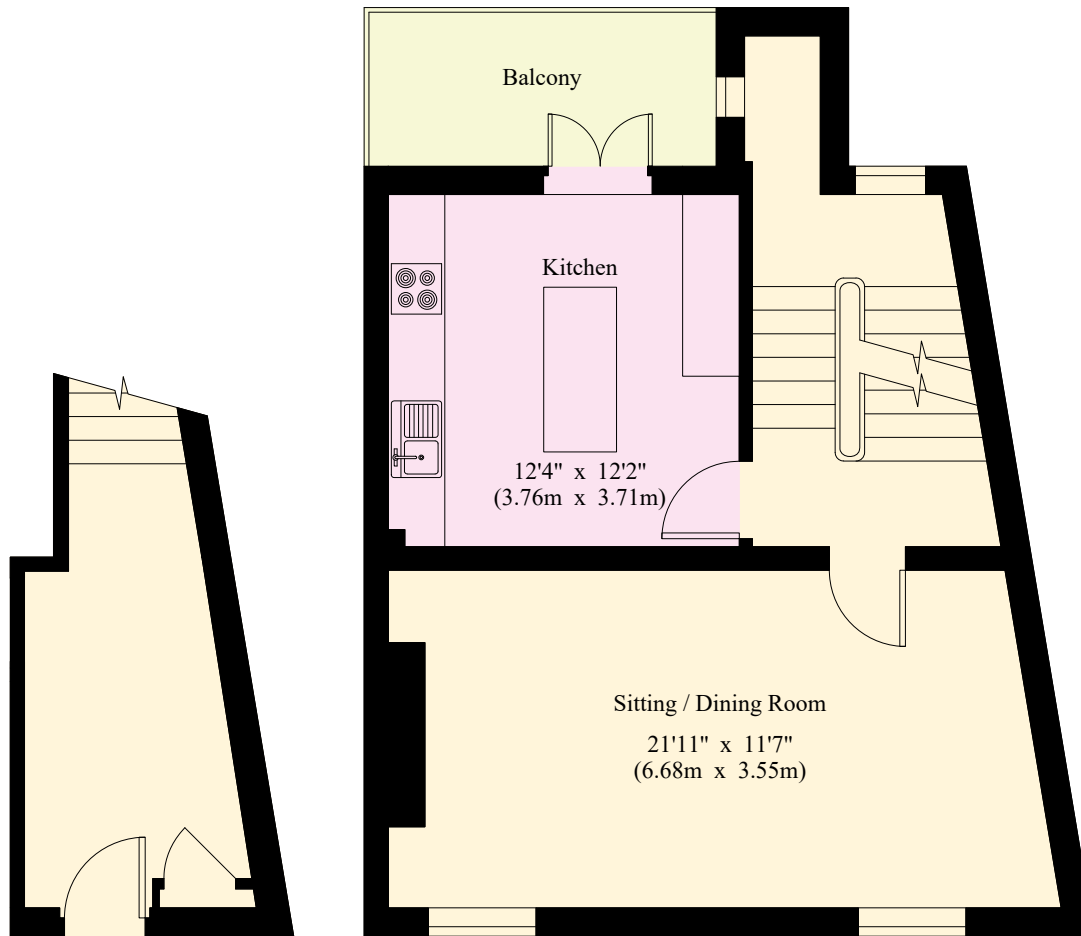


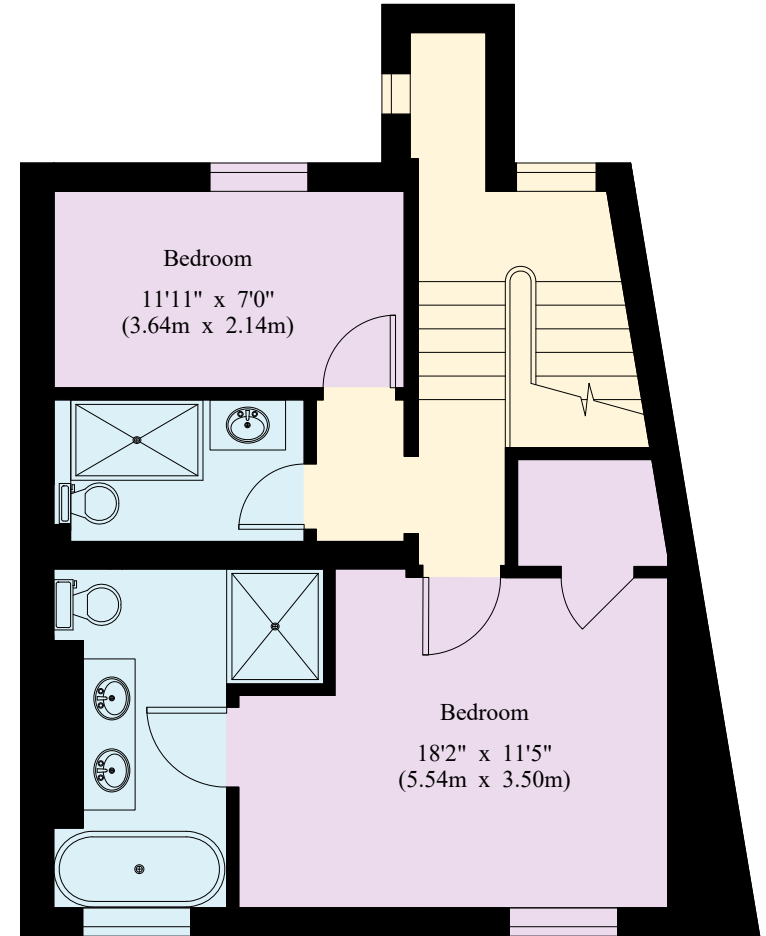
# 6b Nevill Terrace

Gross Internal Area : 109.7 sq.m (1,180 sq.ft.)

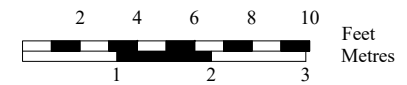


Ground Floor

First Floor



Second Floor



© 06/10/21 Trueplan (UK) Ltd. 01892 614 881

This plan is for guidance only and must not be relied upon as a statement of fact. Attention is drawn to the Important Notice on the last page of the text of the Particulars.