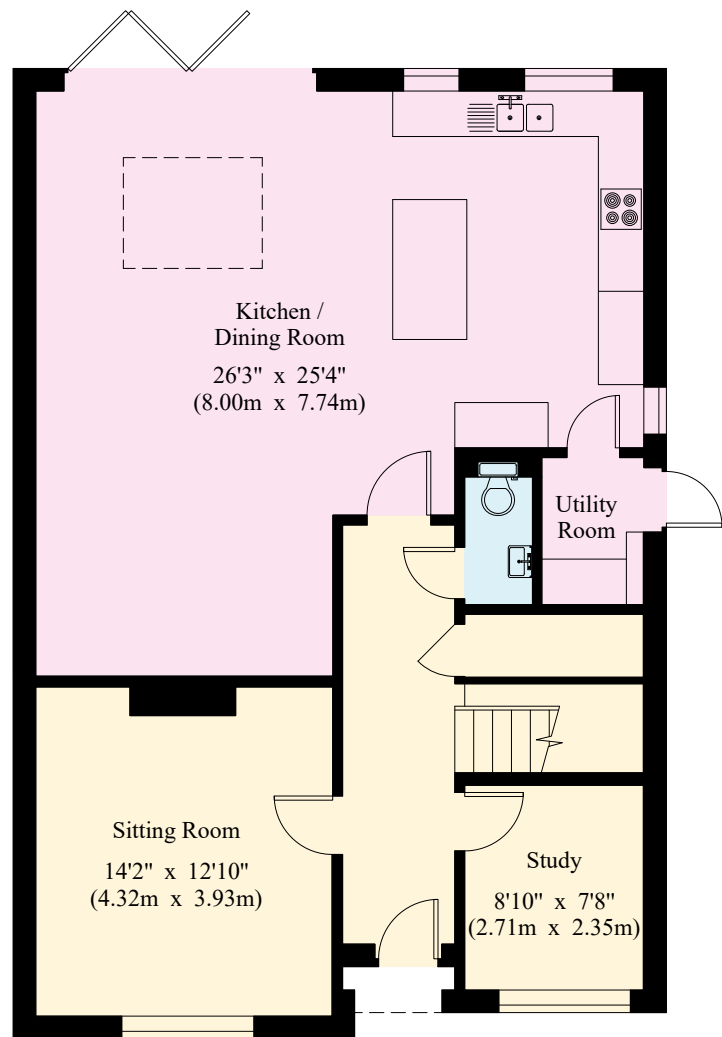
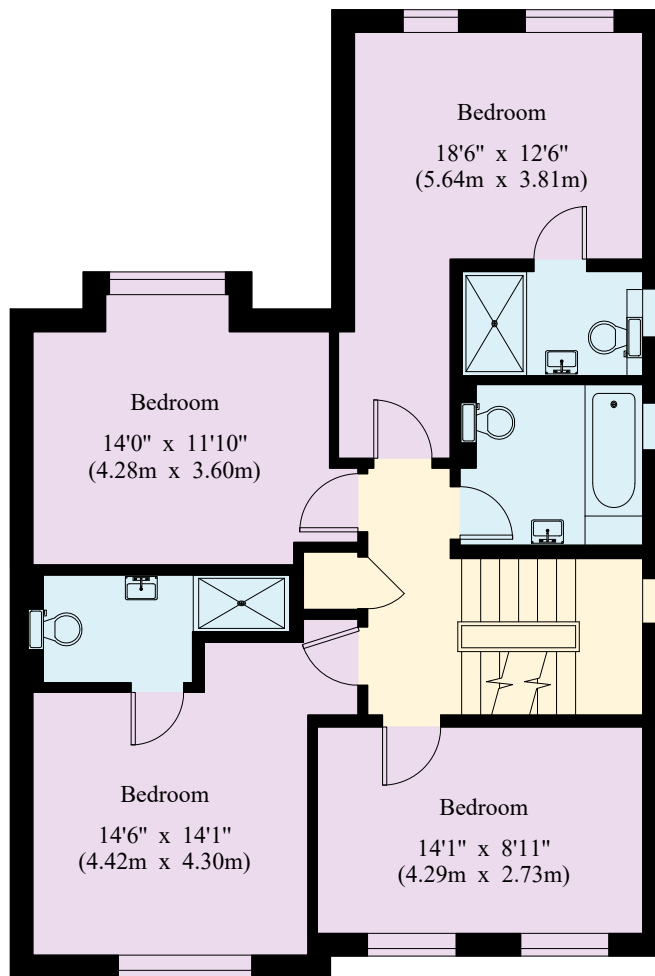


11 Yew Tree Road

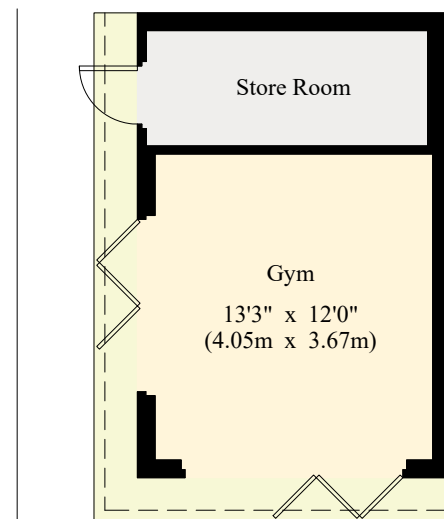
House - Gross Internal Area : 212.0 sq.m (2281 sq.ft.)
Gym / Store - Gross Internal Area : 21.6 sq.m (232 sq.ft.)



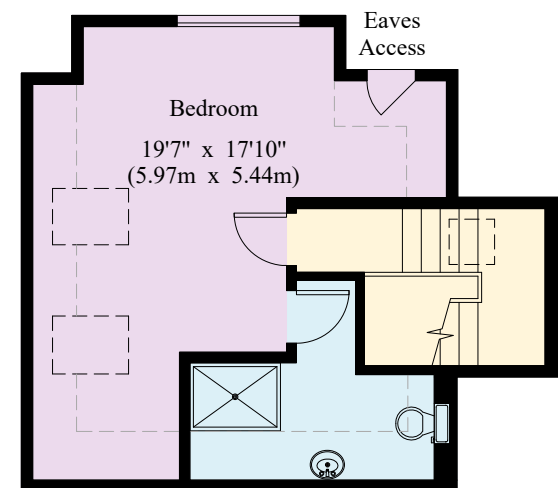
Ground Floor



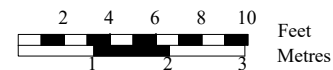
First Floor



----- Restricted Height



Second Floor



© 14/05/25 Trueplan (UK) Ltd. 01892 614 881

This plan is for guidance only and must not be relied upon as a statement of fact. Attention is drawn to the Important Notice on the last page of the text of the Particulars.