

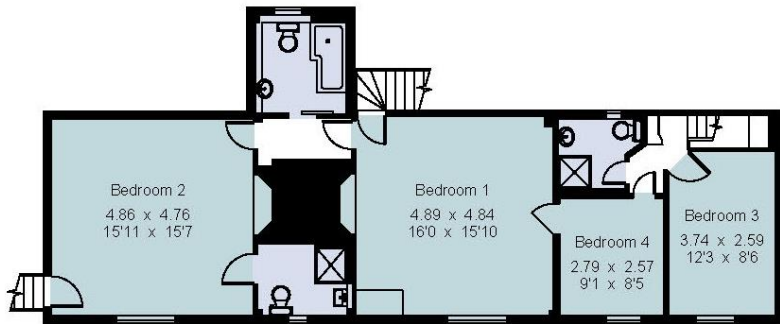
# Ranters Hall, Goudhurst

**Gross internal area (approx)** 221.7 sq m/ 2386 sq ft

**Annexe** 106.6 sq m/ 1147 sq ft

**Garage** 111.2 sq m/ 1196 sq ft

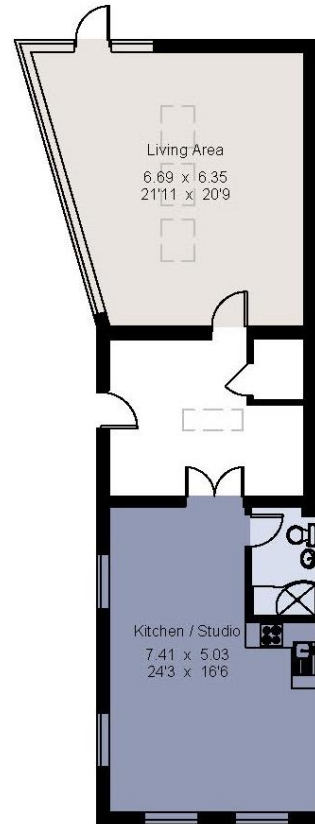
**Total** 439.5 sq m/ 4729 sq ft



First floor



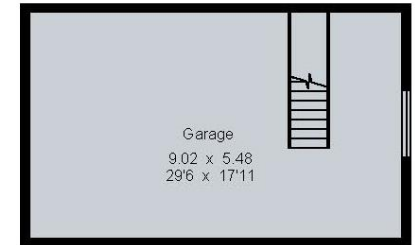
Ground floor



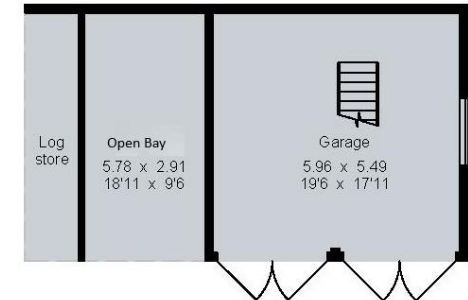
Annexe



(Not Shown In Actual Location / Orientation)



First floor



Ground floor

For identification only - Not to scale  
© Trueplan (UK) Limited